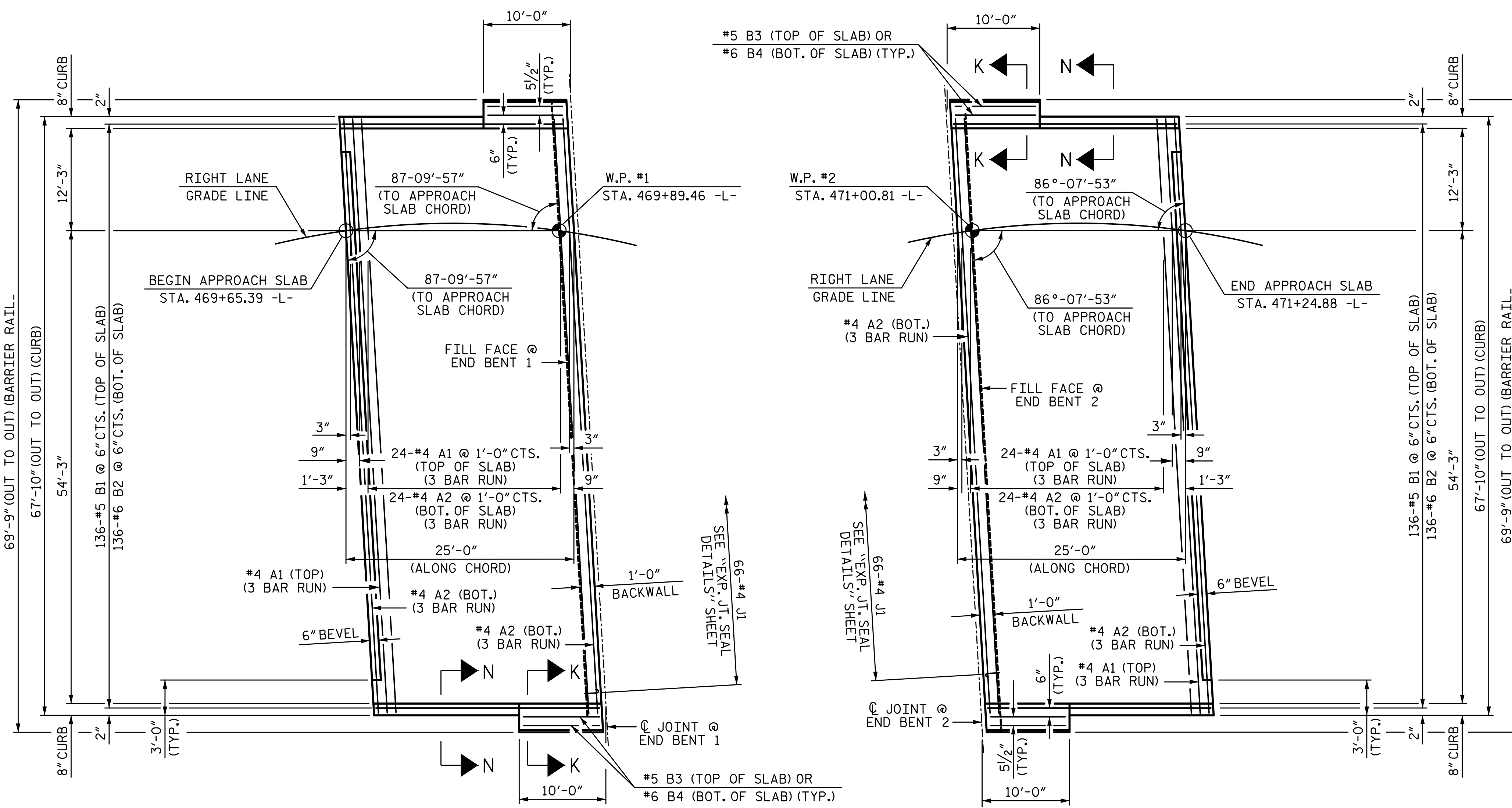


12/21/2017 4:10:36 PM G:\Projects\2016\U-2525C (Greensboro Eastern Loop)\Structures\Site 8\Drawings\Final\Right Lane\U2525C_SMU_AS_Site 6_RT.dgn



NOTES:

FOR BRIDGE APPROACH FILL INCLUDING GEOTEXTILE, MSE WALL REINFORCEMENT AND BACKFILL MATERIAL SEE ROADWAY PLANS.

GEOTEXTILE SHALL BE TYPE 1 IN ACCORDANCE WITH THE STANDARD SPECIFICATIONS SECTION 1056.

BACKFILL MATERIAL SHALL BE THE SAME MATERIAL USED IN THE MSE REINFORCED ZONE.

APPROACH SLAB SHALL NOT BE CONSTRUCTED PRIOR TO COMPLETION OF THE BRIDGE DECK.

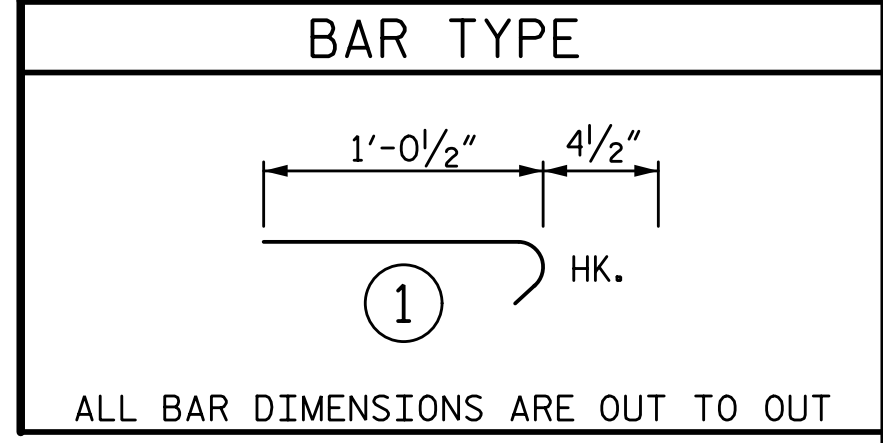
FOR EXPANSION JOINT SEALS, SEE SPECIAL PROVISIONS.

OUTSIDE EDGE OF APPROACH SLABS ARE TO BE CONSTRUCTED PARALLEL TO THE APPROACH SLAB CHORDS.

BAR SIZE	EPOXY COATED	UNCOATED
#4	2'-0"	1'-9"
#5	2'-6"	2'-2"
#6	3'-10"	2'-7"

APPROACH SLAB AT EB #1					
BAR NO.	SIZE	TYPE	LENGTH	WEIGHT	
*A1	75	#4	STR 24'-6"	1227	
A2	78	#4	STR 24'-4"	1268	
*B1	136	#5	STR 23'-10"	3381	
B2	136	#6	STR 24'-7"	5022	
*B3	4	#5	STR 9'-7"	40	
B4	4	#6	STR 9'-7"	58	
*J1	66	#4	1	1'-5"	62
REINFORCING STEEL			6348 LB		
EPOXY COATED REINFORCING STEEL			4710 LB		
CLASS AA CONCRETE			74.5 CY		

APPROACH SLAB AT EB #2					
BAR NO.	SIZE	TYPE	LENGTH	WEIGHT	
*A1	75	#4	STR 24'-6"	1227	
A2	78	#4	STR 24'-4"	1268	
*B1	136	#5	STR 23'-10"	3381	
B2	136	#6	STR 24'-7"	5022	
*B3	4	#5	STR 9'-7"	40	
B4	4	#6	STR 9'-7"	58	
*J1	66	#4	1	1'-5"	62
REINFORCING STEEL			6348 LB		
EPOXY COATED REINFORCING STEEL			4710 LB		
CLASS AA CONCRETE			74.5 CY		



ALL BAR DIMENSIONS ARE OUT TO OUT

* INDICATES EPOXY COATED REINFORCING STEEL.

QUANTITIES FOR BARRIER RAIL ARE NOT INCLUDED, SEE SHEET 2 OF 2.

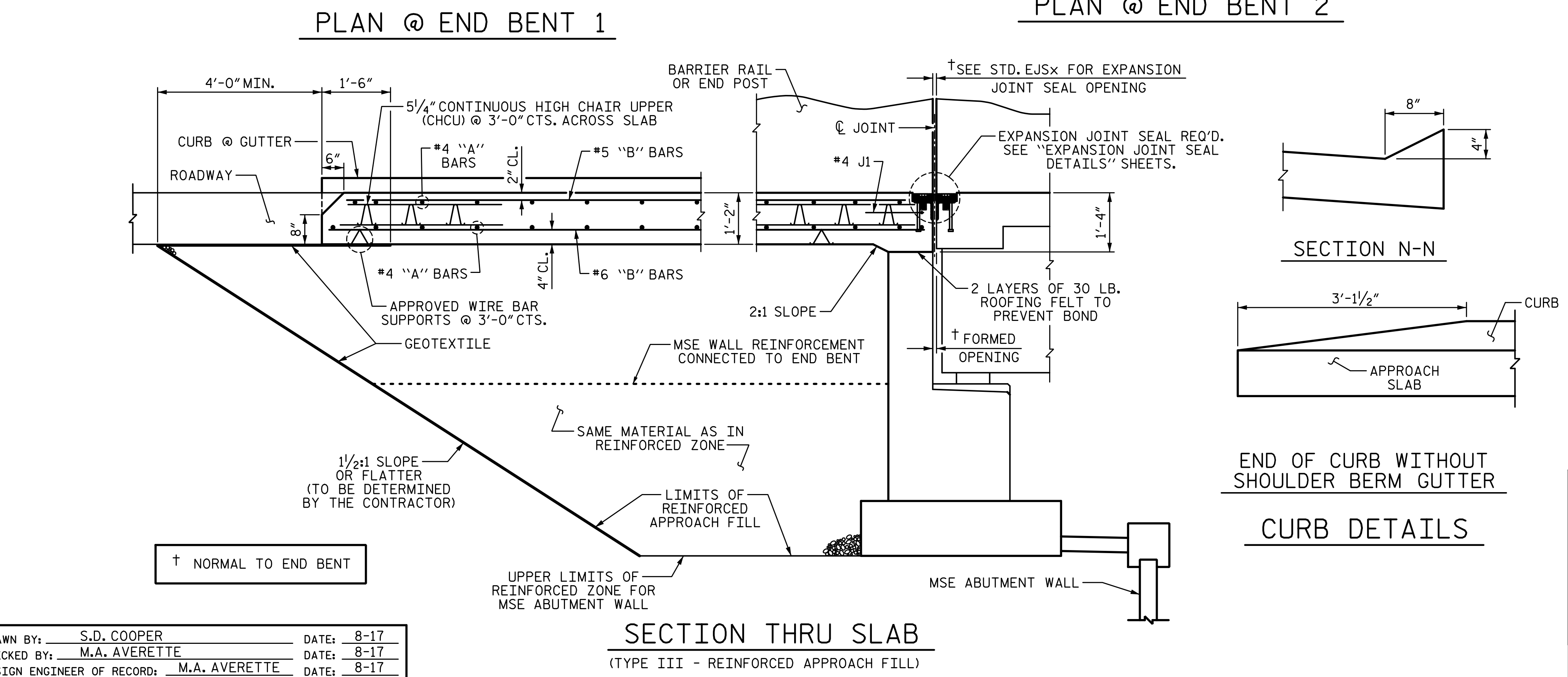
THE QUANTITY OF #4 J1 BARS ON THE BILL OF MATERIAL IS BASED ON 1'-0" CENTERS. J1 BARS SHALL BE PLACED AT EACH VERTICAL STUD ANCHOR BOLT. IN THE EVENT THAT THE NUMBER OF VERTICAL STUD ANCHORS EXCEEDS THE NUMBER OF J1 BARS SPECIFIED, ADDITIONAL J1 BARS WILL NOT BE REQUIRED.

PROJECT NO. U-2525C

GUILFORD COUNTY

STATION: 470+43.12 -L-

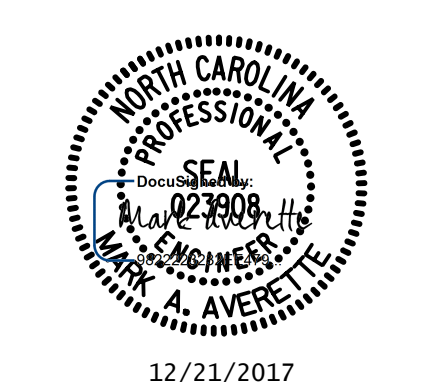
SHEET 1 OF 2



PLANS PREPARED BY:

SEA & A
IMPSON ENGINEERS & ASSOCIATES

5640 Dillard Drive
Suite 200
Cary, NC 27518
(919) 852-0468
(919) 852-0538 (Fax)
www.slmpsonengr.com
LICENSURE NO. C-2521



STATE OF NORTH CAROLINA DEPARTMENT OF TRANSPORTATION RALEIGH					
BRIDGE APPROACH SLAB					
RIGHT LANE					
REVISIONS					
NO.	BY:	DATE:	NO.	BY:	DATE:
1			3		
2			4		

SHEET NO. S9-31

TOTAL SHEETS 32

DRAWN BY: S.D. COOPER DATE: 8-17

CHECKED BY: M.A. AVERETTE DATE: 8-17

DESIGN ENGINEER OF RECORD: M.A. AVERETTE DATE: 8-17

DOCUMENT NOT CONSIDERED FINAL
UNLESS ALL SIGNATURES COMPLETED