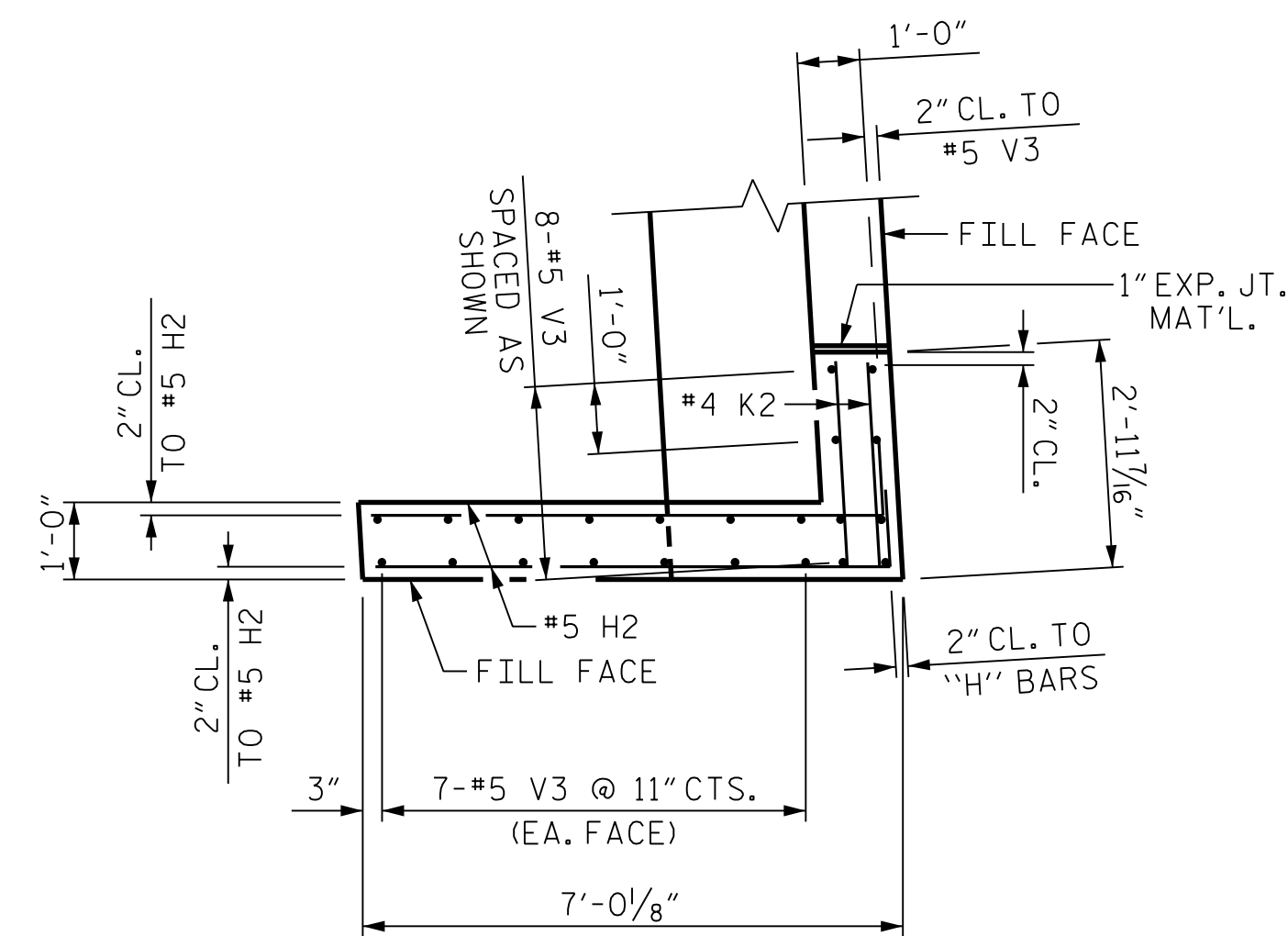
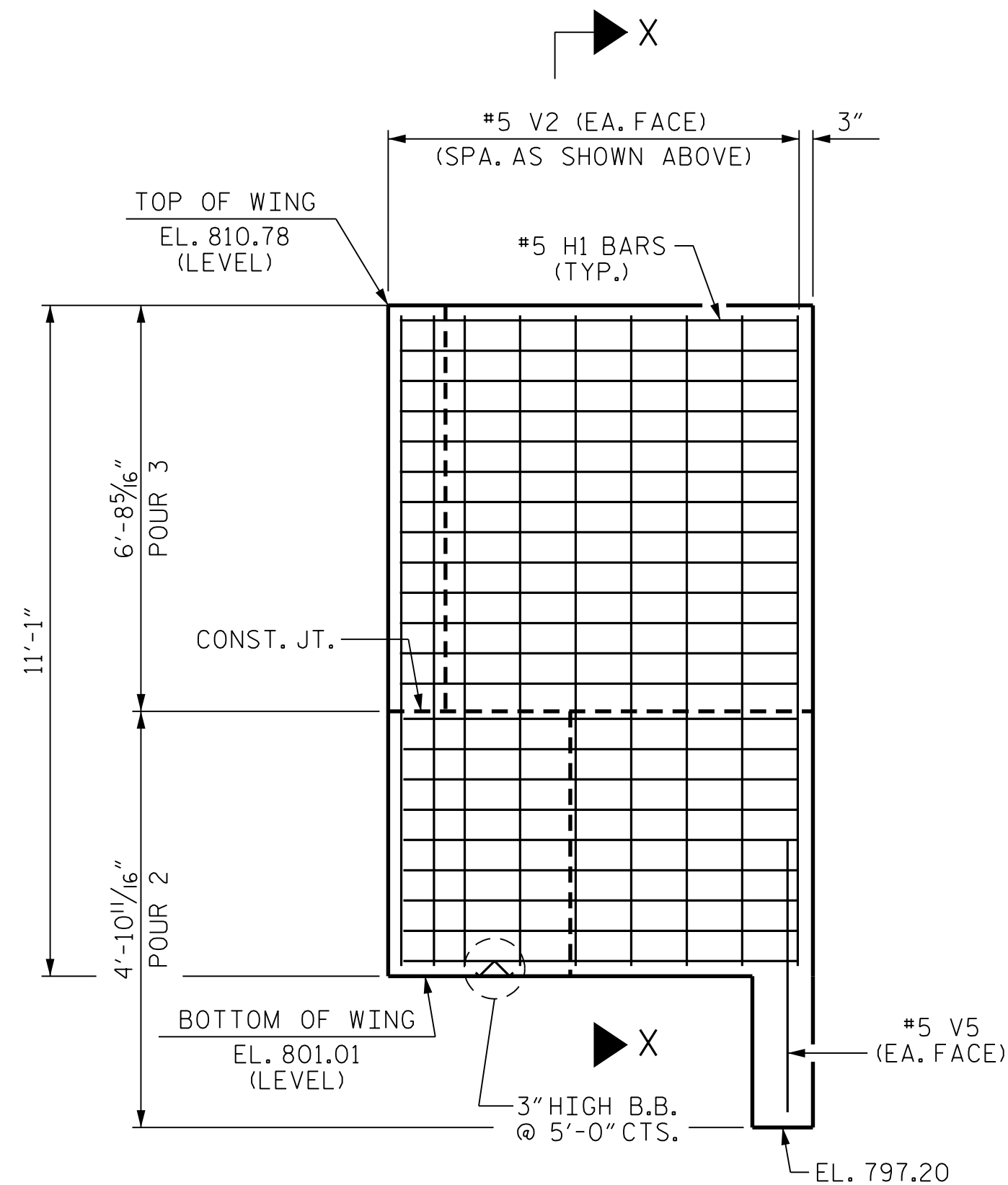


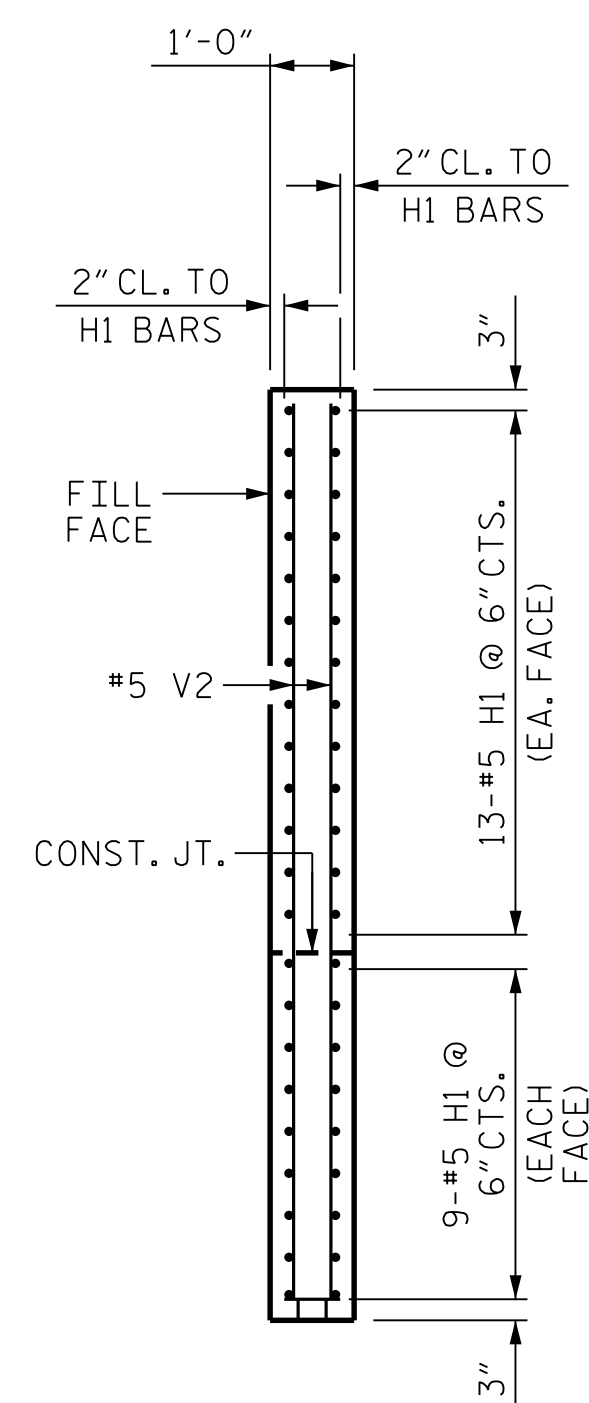
**PLAN OF WING (W1)**  
(FOOTING NOT SHOWN FOR CLARITY)



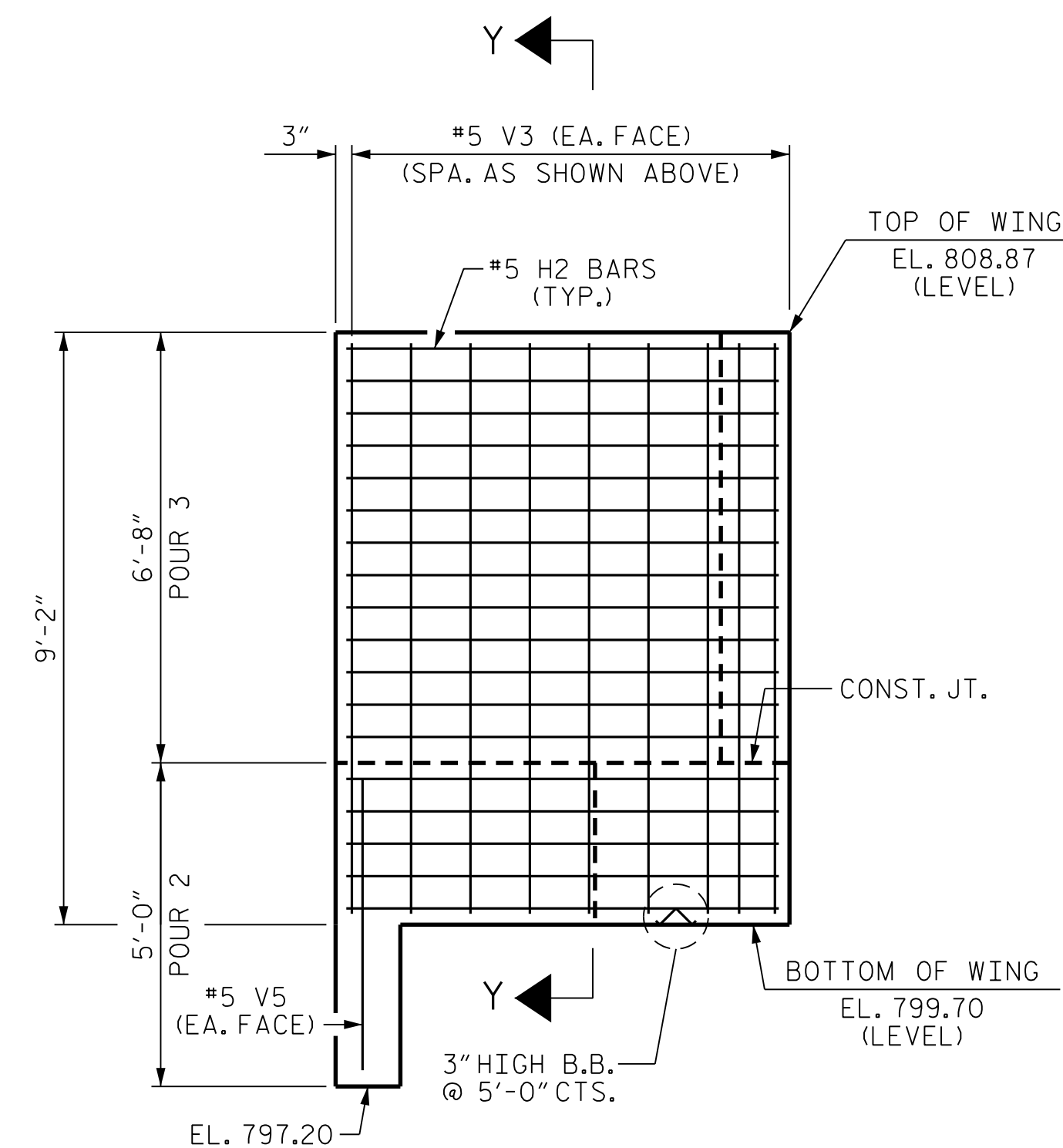
**PLAN OF WING (W2)**  
(FOOTING NOT SHOWN FOR CLARITY)



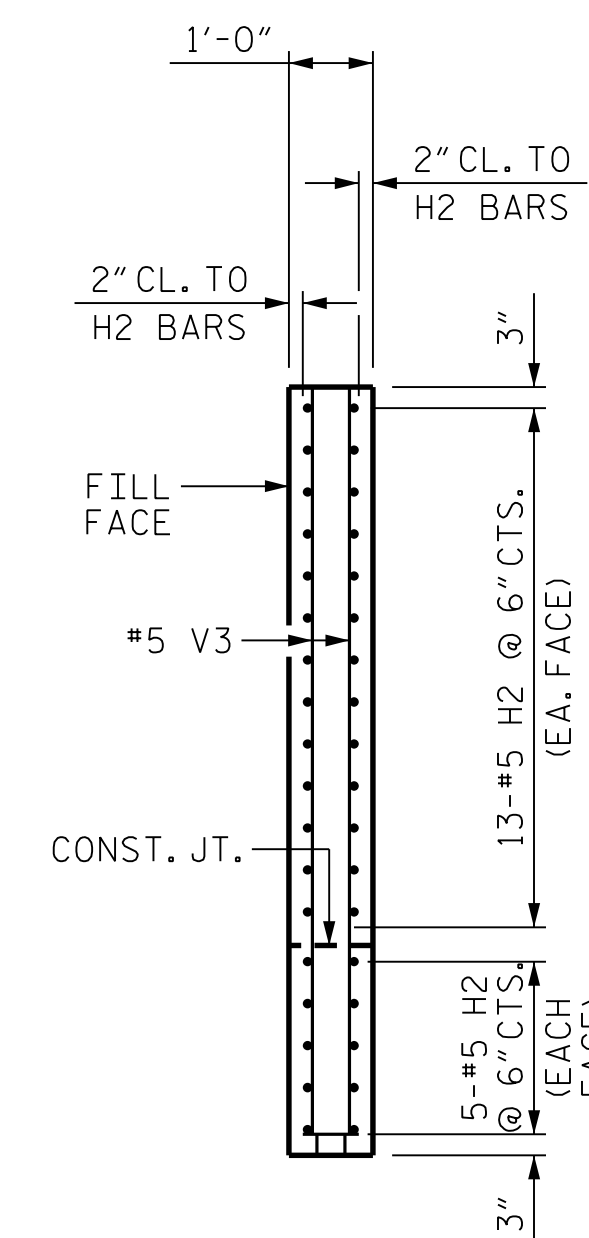
**ELEVATION OF WING (W1)**  
(FOOTING NOT SHOWN FOR CLARITY)



**SECTION X-X**



**ELEVATION OF WING (W2)**  
(FOOTING NOT SHOWN FOR CLARITY)



**SECTION Y-Y**

PROJECT NO. U-2525C  
GUILFORD COUNTY  
 STATION: 470+43.12 -L-

SHEET 2 OF 4

STATE OF NORTH CAROLINA  
 DEPARTMENT OF TRANSPORTATION  
 RALEIGH  
 SUBSTRUCTURE

END BENT 2

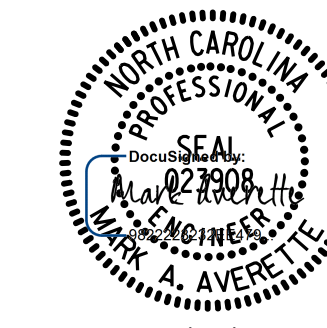
RIGHT LANE

REVISIONS

NO.	BY:	DATE:	NO.	BY:	DATE:	SHEET NO.
1			3			S9-28
2			4			TOTAL SHEETS 32

PLANS PREPARED BY:

**SIMPSON ENGINEERS ASSOCIATES**  
**S&EA**  
 5640 Dillard Drive  
 Suite 200  
 Cary, NC 27518  
 (919) 852-0468  
 (919) 852-0538 (Fax)  
 www.simpsonengr.com  
 LICENSURE NO. C-2521



**DOCUMENT NOT CONSIDERED FINAL  
 UNLESS ALL SIGNATURES COMPLETED**

\$DATE\$ \$TIME\$ \$FILE\$

DRAWN BY: R. SEALEY DATE: 8-17  
 CHECKED BY: M.A. AVERETTE DATE: 8-17  
 DESIGN ENGINEER OF RECORD: M.A. AVERETTE DATE: 8-17