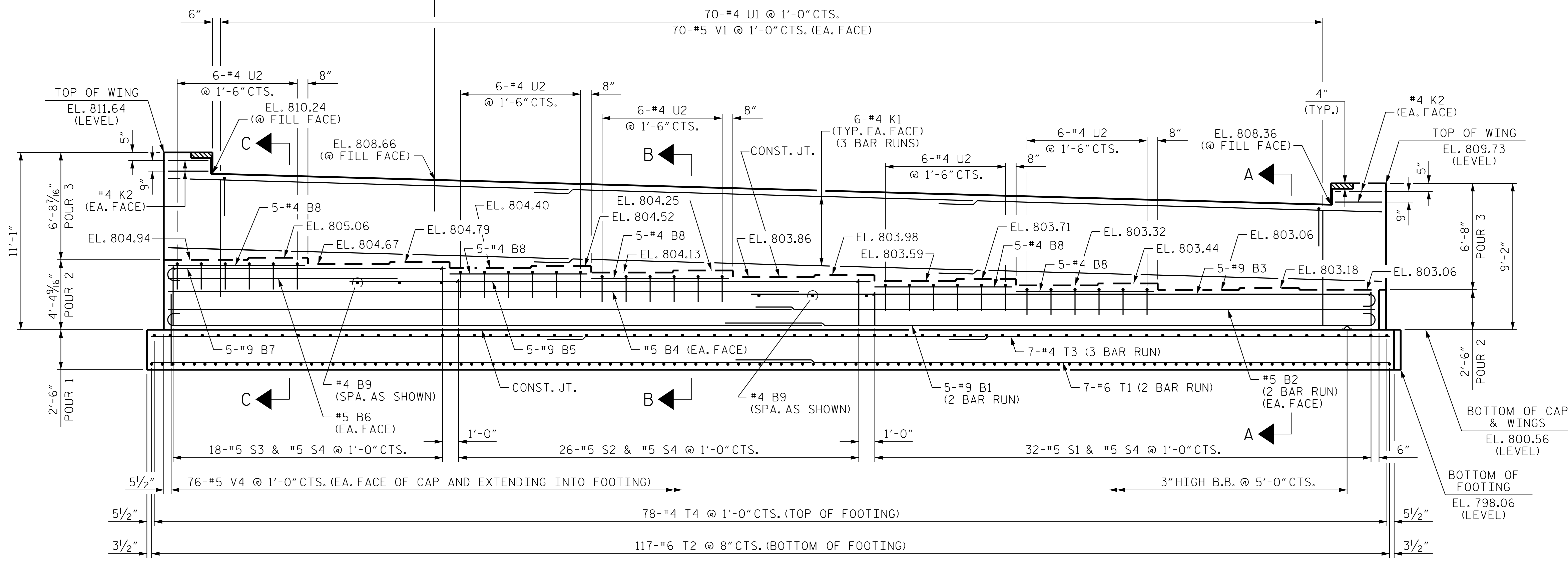


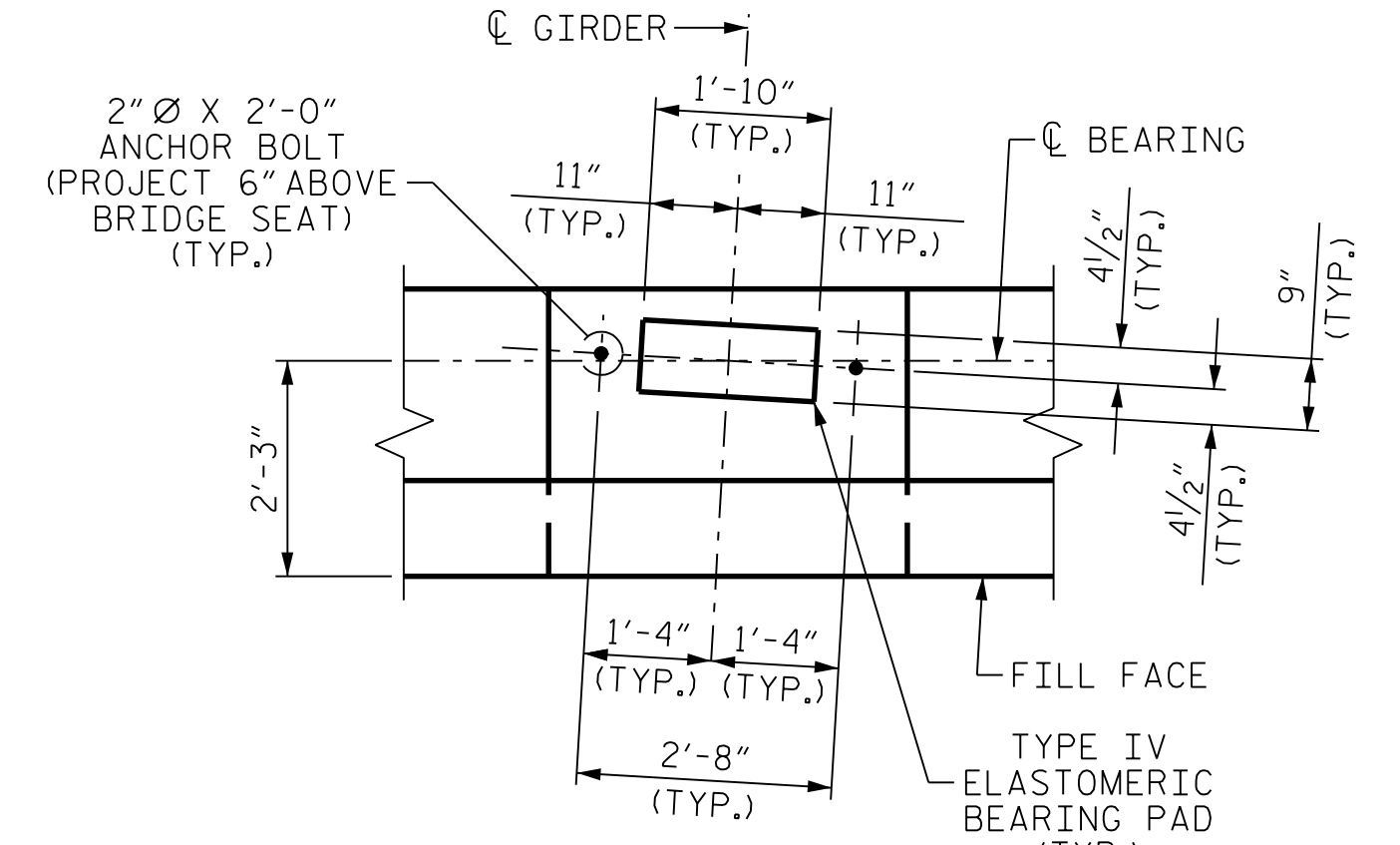
PLAN



ELEVATION

NOTES:

- FOR SECTIONS A-A, B-B, & C-C SEE SHEET 3 OF 4.
- 1/2" EXPANSION JOINT MATERIAL IS TO BE PLACED BETWEEN WINGWALLS AND MSE WALLS.
- THE TOP SURFACE AREAS OF THE END BENT CAP SHALL BE CURED IN ACCORDANCE WITH THE STANDARD SPECIFICATIONS EXCEPT THE MEMBRANE CURING COMPOUND METHOD SHALL NOT BE USED.
- THE TOP SURFACE OF THE CAP EXCEPT THE BRIDGE SEAT BUILDUPS SHALL BE SLOPED TRANSVERSELY FROM THE FILL FACE TO THE BACK FACE AT THE RATE OF 2%.
- STIRRUPS IN CAP MAY BE SHIFTED AS NECESSARY TO CLEAR ANCHOR BOLTS.
- BACKWALL SHALL BE PLACED BEFORE APPLYING THE EPOXY PROTECTIVE COATING.
- THE MSE WALL IS NOT SHOWN, FOR MSE WALL AND MSE REINFORCING STRAPS, SEE MSE WALL PLANS AND SPECIAL PROVISIONS.
- THE CONCRETE IN THE SHADED AREA OF THE WING SHALL BE POURED AFTER THE BARRIER RAILS ARE CAST IF SLIP FORMING IS USED.



DETAIL "A"
(TYP. EA. GIRDER)

SPLICE CHART	
#9 B1	SPLICE LENGTH = 6'-3"
#5 B2	SPLICE LENGTH = 3'-0"
#5 B4	SPLICE LENGTH = 3'-0"
#5 B6	SPLICE LENGTH = 3'-0"
#4 K1	SPLICE LENGTH = 2'-5"
#6 T1	SPLICE LENGTH = 3'-10"
#4 T3	SPLICE LENGTH = 2'-5"

PROJECT NO. U-2525C
GUILFORD COUNTY
 STATION: 470+43.12 -L-

SHEET 1 OF 4

STATE OF NORTH CAROLINA
 DEPARTMENT OF TRANSPORTATION
 RALEIGH
 SUBSTRUCTURE
 END BENT 1
 RIGHT LANE

PLANS PREPARED BY:
SIMPSON ENGINEERS & ASSOCIATES
 5640 Dillard Drive
 Suite 200
 Cary, NC 27518
 (919) 852-0468
 (919) 852-0538 (Fax)
 www.simpsonengr.com
 LICENSURE NO. C-2521



REVISIONS						SHEET NO. S9-23
NO.	BY:	DATE:	NO.	BY:	DATE:	
1			3			TOTAL SHEETS 32
2			4			

**DOCUMENT NOT CONSIDERED FINAL
 UNLESS ALL SIGNATURES COMPLETED**

DRAWN BY: R. SEALEY DATE: 8-17
 CHECKED BY: M.A. AVERETTE DATE: 8-17
 DESIGN ENGINEER OF RECORD: M.A. AVERETTE DATE: 8-17

\$DATE\$ \$TIME\$ \$FILE\$