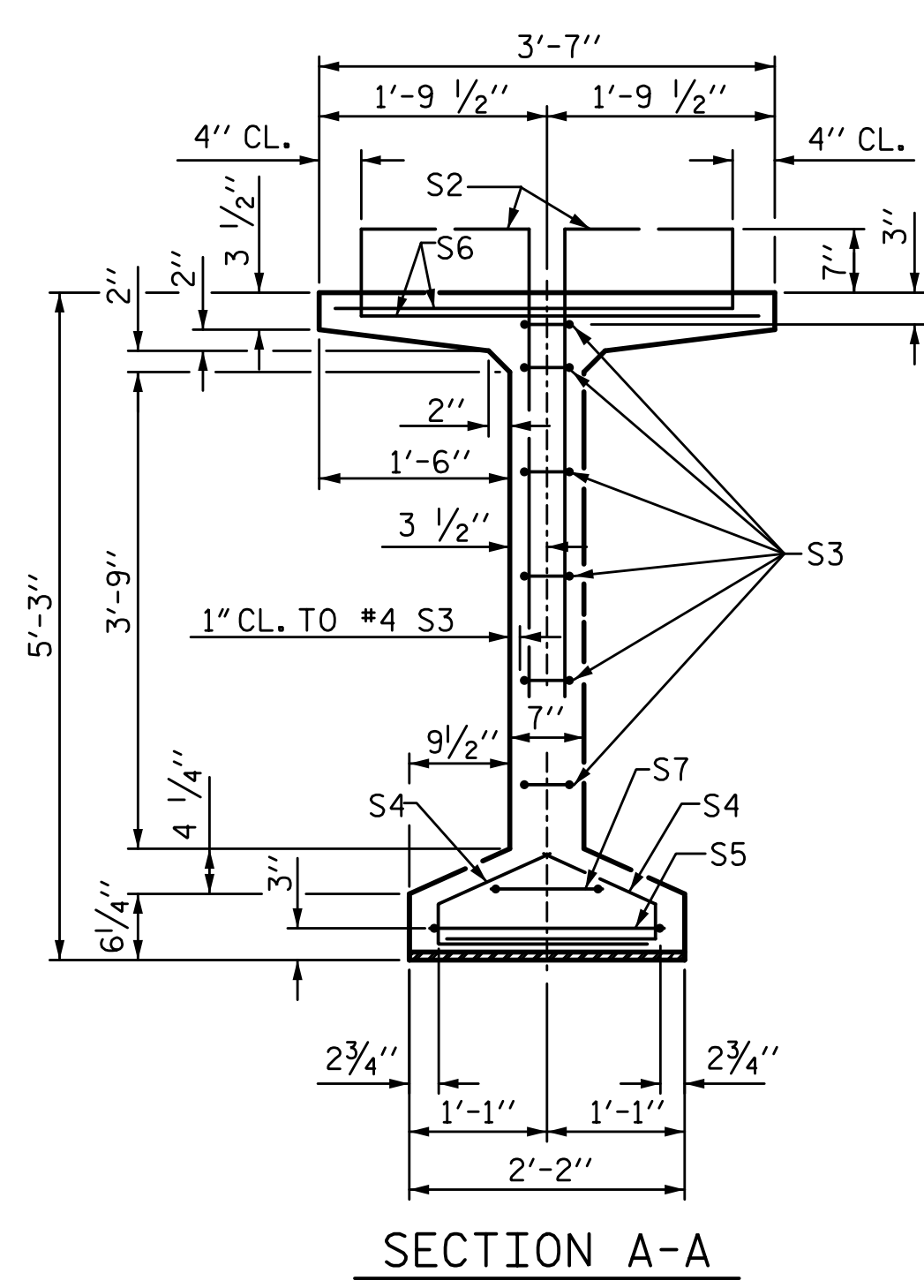
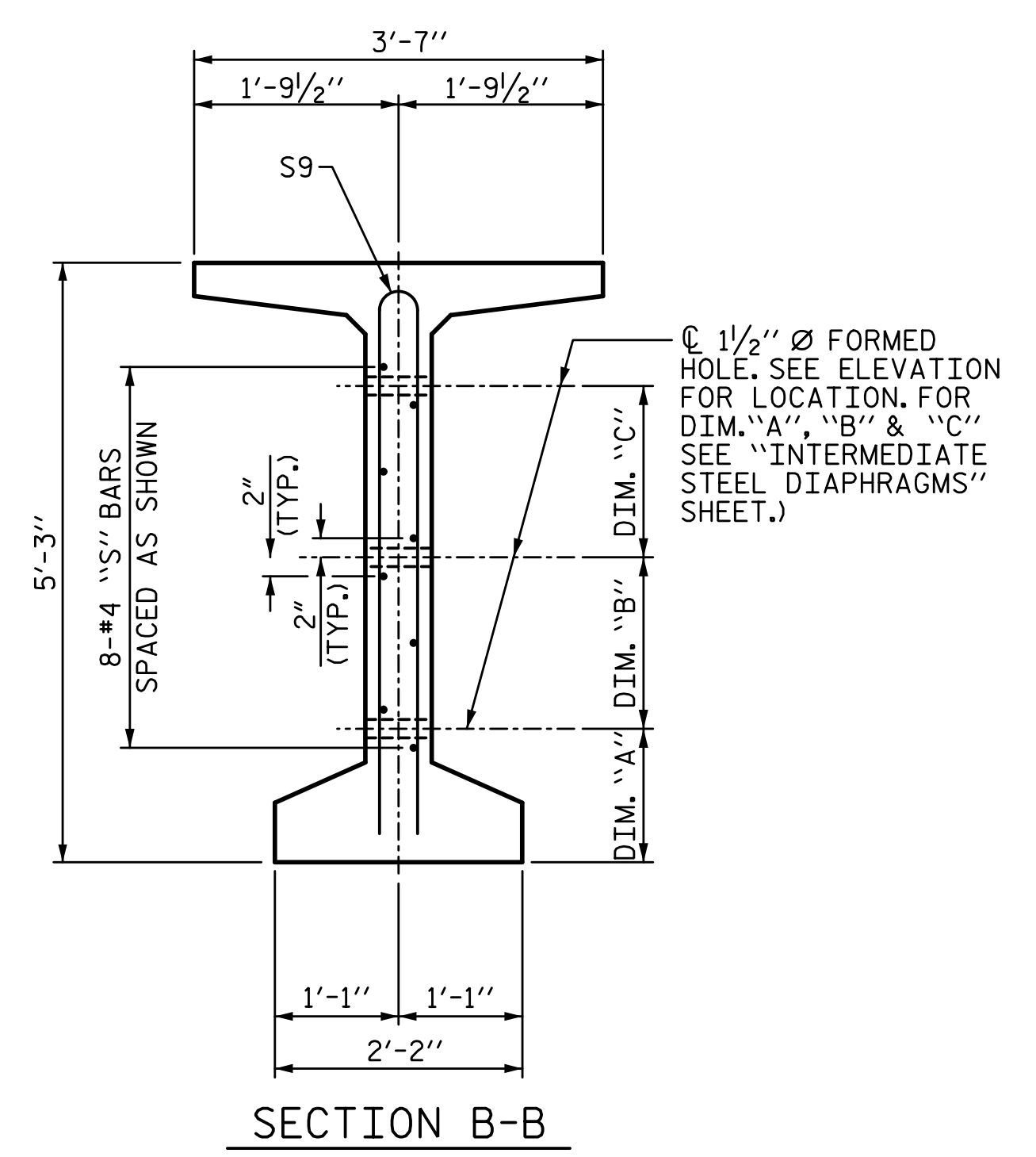


12/21/2017 4:10:35 PM G:\Projects\2016\U-2525C (Greensboro Eastern Loop)\Drawings\Final\Right Lane\U2525C_SMU_PCC_Site 6_RT.dgn



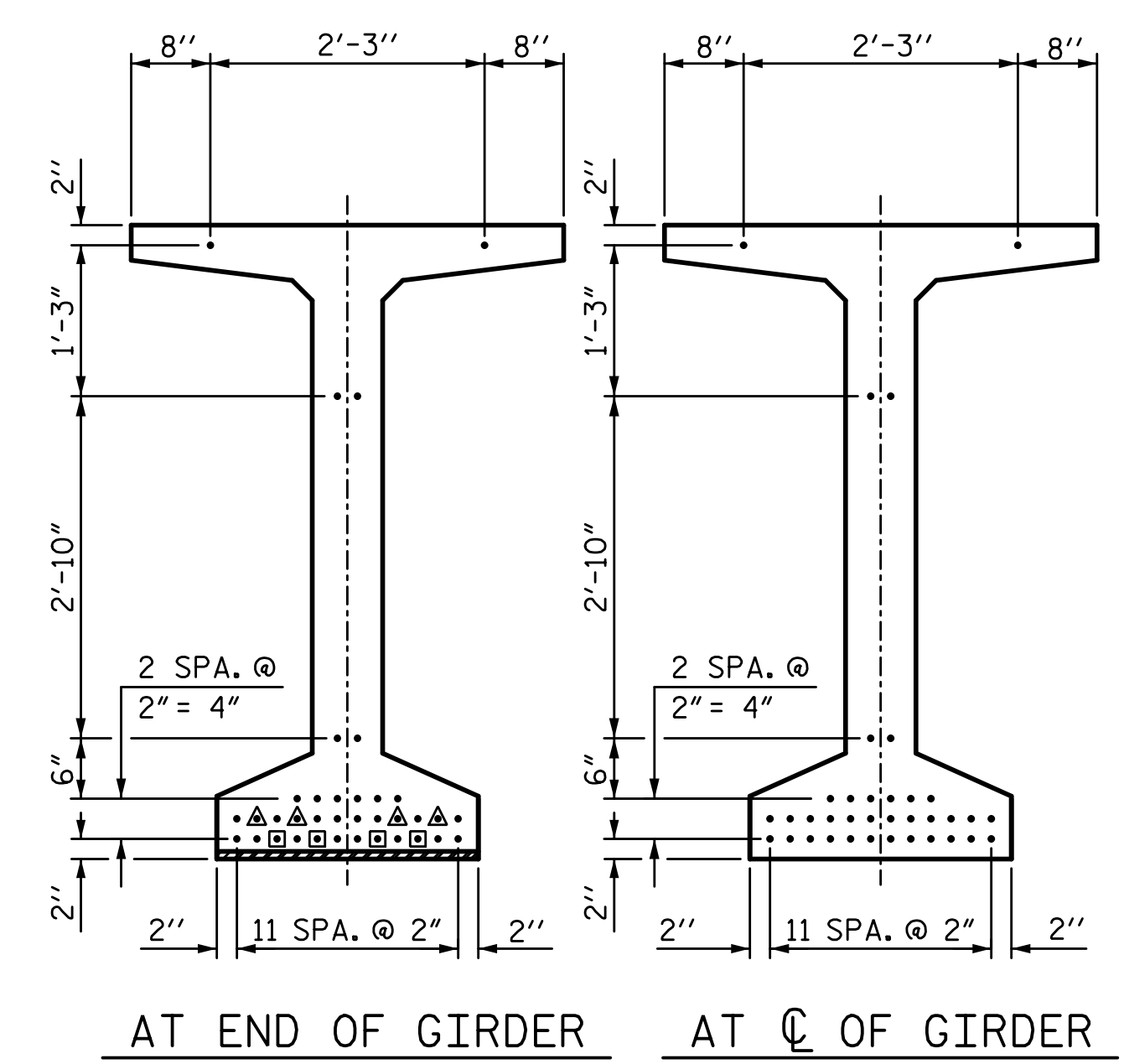
SECTION A-A



SECTION B-B
(S1, S6 AND S8 BARS NOT SHOWN)

DEBONDING LEGEND

- FULLY DEBONDED STRAND
- ▲ STRAND DEBONDED FOR 10'-0" FROM END OF GIRDER
- STRAND DEBONDED FOR 20'-0" FROM END OF GIRDER

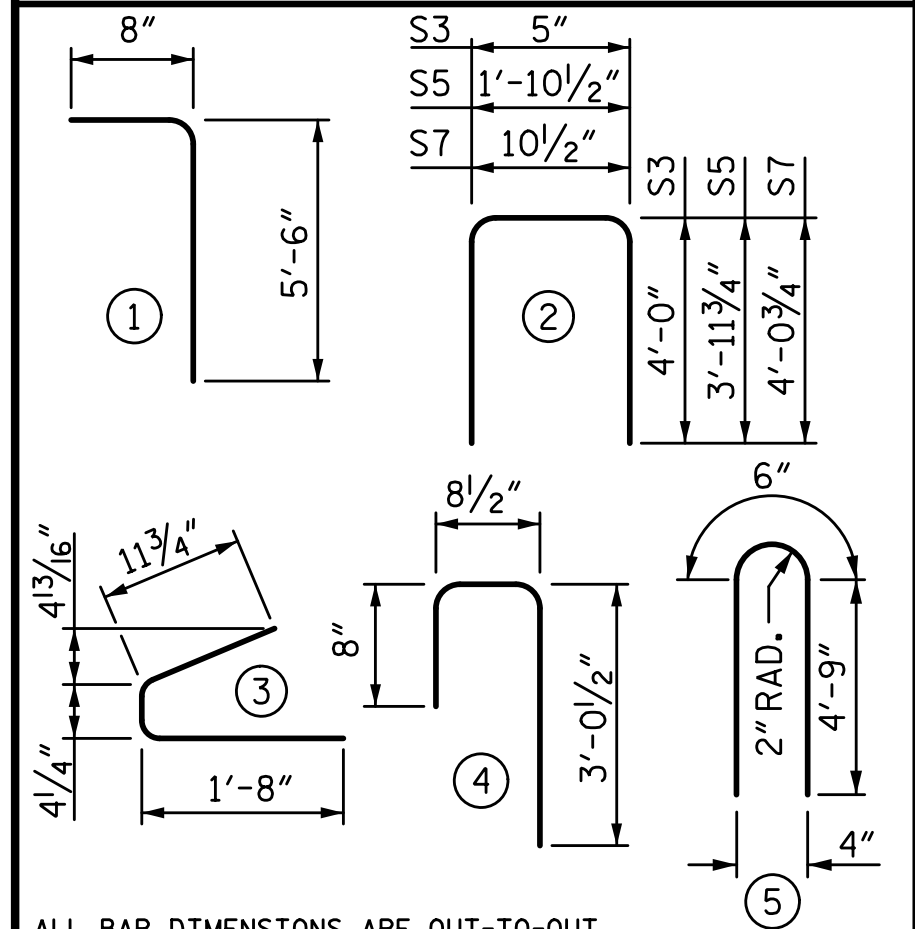


0.6" Ø LOW RELAXATION STRAND LAYOUT

0.6" Ø L. R. GRADE 270 STRANDS		
AREA (SQUARE INCHES)	ULTIMATE STRENGTH (LBS. PER STRAND)	APPLIED PRESTRESS (LBS. PER STRAND)
0.217	58,600	43,950

REINFORCING STEEL FOR ONE GDR					
BAR NO.	NO.	SIZE	TYPE	LENGTH	WEIGHT
S1	198	#4	1	6'-2"	816
S2	36	#5	1	6'-2"	232
S3	12	#4	2	8'-5"	67
S4	76	#4	3	3'-0"	152
S5	2	#5	2	9'-10"	21
S6	234	#5	4	4'-5"	1078
S7	2	#5	2	9'-0"	19
S8	12	#5	STR	3'-3"	41
S9	8	#5	5	10'-0"	83
S10	16	#4	STR	8'-0"	86

BAR TYPES



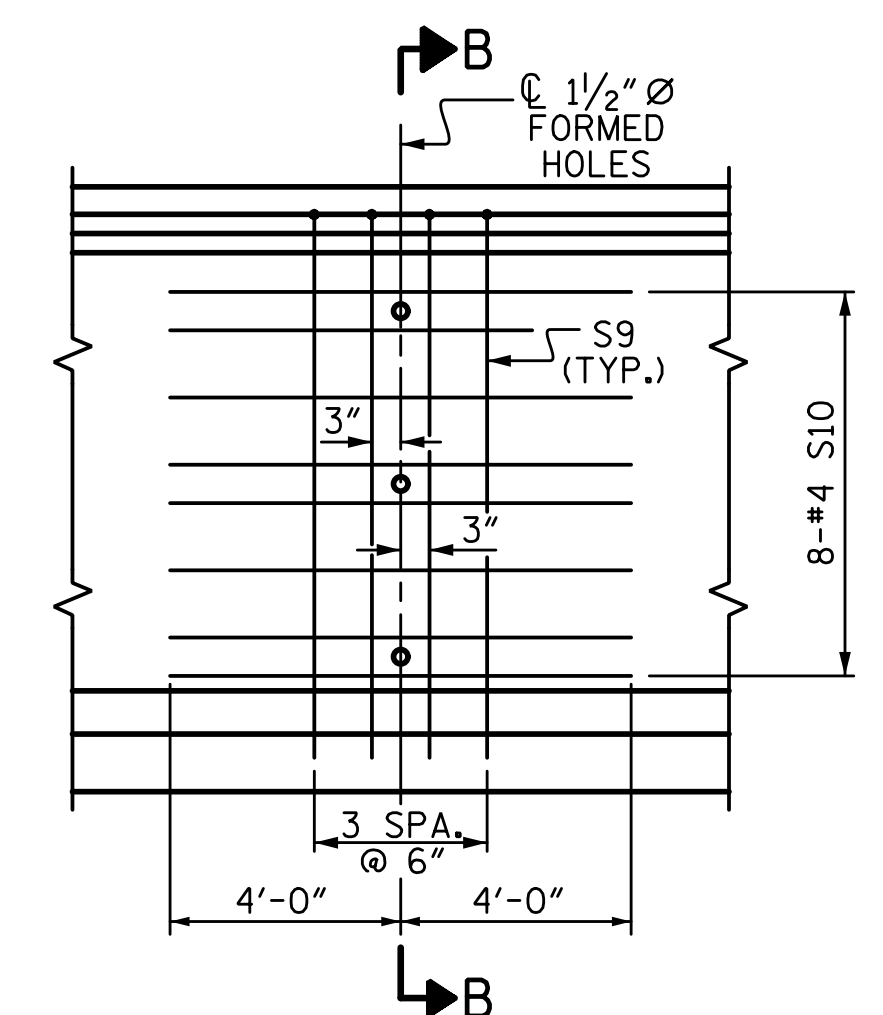
ALL BAR DIMENSIONS ARE OUT-TO-OUT

QUANTITIES FOR ONE GIRDER

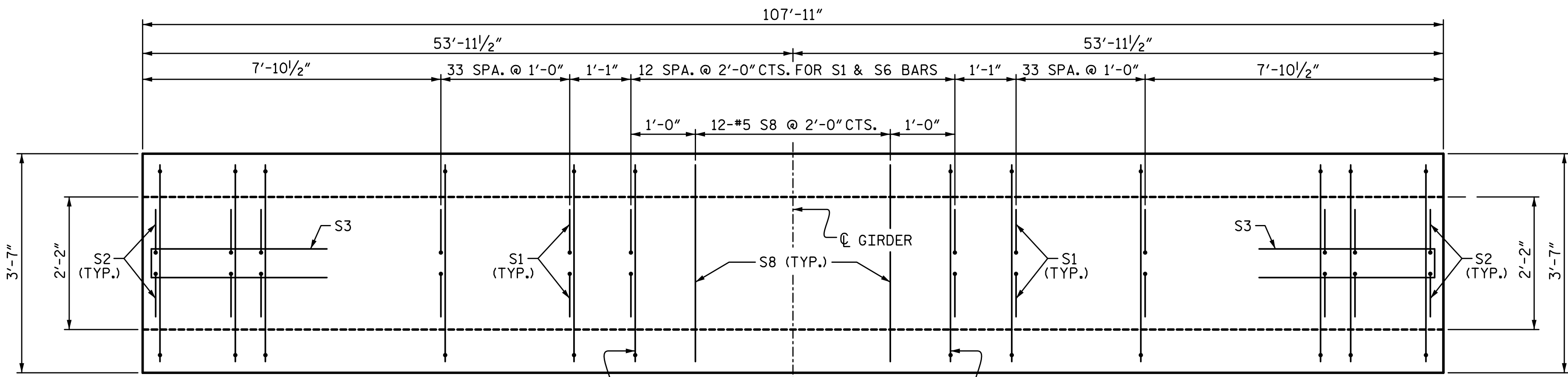
REINFORCING STEEL	8,000 PSI CONCRETE		0.6" Ø L.R. STRANDS
	LB.	C.Y.	
	2595 LB	21.4	36

GIRDERS REQUIRED

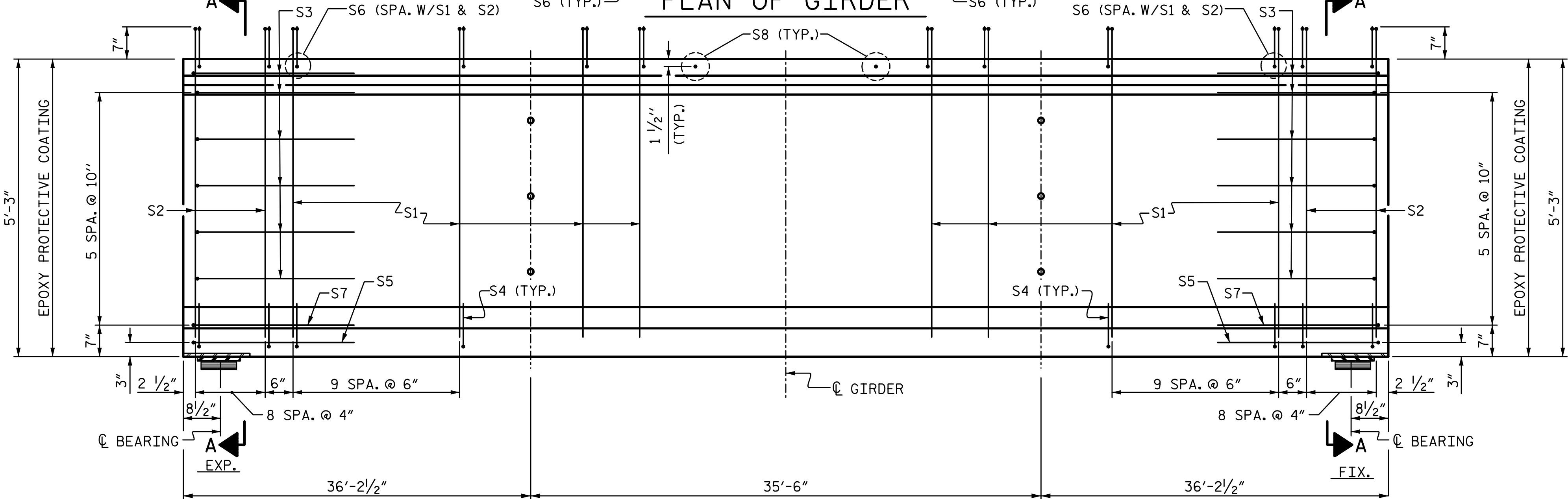
NUMBER	LENGTH	TOTAL LENGTH
8	107'-11"	863'-4"



PARTIAL ELEVATION
SHOWING INTERMEDIATE STEEL DIAPHRAGM REINFORCING STEEL FOR ALL GIRDERS



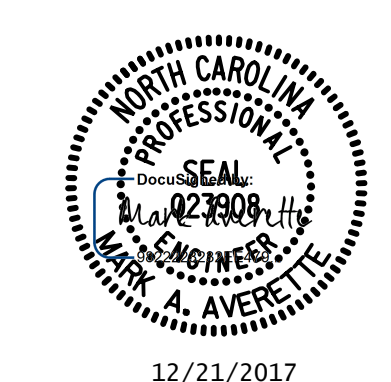
PLAN OF GIRDER



ELEVATION OF GIRDER

DRAWN BY: S.D. COOPER DATE: 8-17
 CHECKED BY: M.A. AVERETTE DATE: 8-17
 DESIGN ENGINEER OF RECORD: M.A. AVERETTE DATE: 8-17

PLANS PREPARED BY:
SIMPSON ENGINEERS & ASSOCIATES
 5640 Dillard Drive
 Suite 200
 Cary, NC 27518
 (919) 852-0468
 (919) 852-0538 (Fax)
 www.simpsonengr.com
 LICENSURE NO. C-2521



PROJECT NO. U-2525C
GUILFORD COUNTY
 STATION: 470+43.12 -L-

SHEET 1 OF 2

STATE OF NORTH CAROLINA
 DEPARTMENT OF TRANSPORTATION
 RALEIGH
 SUPERSTRUCTURE
 63" PRESTRESSED
 CONCRETE MODIFIED
 BULB TEE
 RIGHT LANE

REVISIONS				SHEET NO. S9-12
NO.	BY:	DATE:	NO.	
1			3	TOTAL SHEETS 32
2			4	

DOCUMENT NOT CONSIDERED FINAL
 UNLESS ALL SIGNATURES COMPLETED