

TOP "A" BAR LAYOUT

(*5 "A" BARS ARE TO BE PLACED PERPENDICULAR TO THE CHORD AND SPACED ALONG THE CHORD)

PROJECT NO. U-2525C
GUILFORD COUNTY
 STATION: 470+43.12 -L-

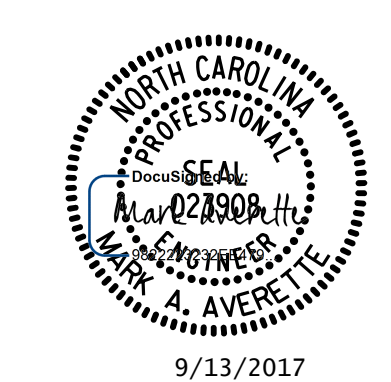
SHEET 1 OF 2

STATE OF NORTH CAROLINA
 DEPARTMENT OF TRANSPORTATION
 RALEIGH
 SUPERSTRUCTURE

"A" BAR LAYOUT

RIGHT LANE

PLANS PREPARED BY:
SE & A
 SIMPSON ENGINEERS ASSOCIATES
 5640 Dillard Drive
 Suite 200
 Cary, NC 27518
 (919) 852-0468
 (919) 852-0538 (Fax)
 www.simpsonenr.com
 LICENSURE NO. C-2521



REVISIONS						SHEET NO.
NO.	BY:	DATE:	NO.	BY:	DATE:	S9-9
1			3			TOTAL SHEETS
2			4			32

DRAWN BY: S.D. COOPER DATE: 8-17
 CHECKED BY: M.A. AVERETTE DATE: 8-17
 DESIGN ENGINEER OF RECORD: M.A. AVERETTE DATE: 8-17

**DOCUMENT NOT CONSIDERED FINAL
 UNLESS ALL SIGNATURES COMPLETED**

\$DATE\$ \$TIME\$ \$FILE\$