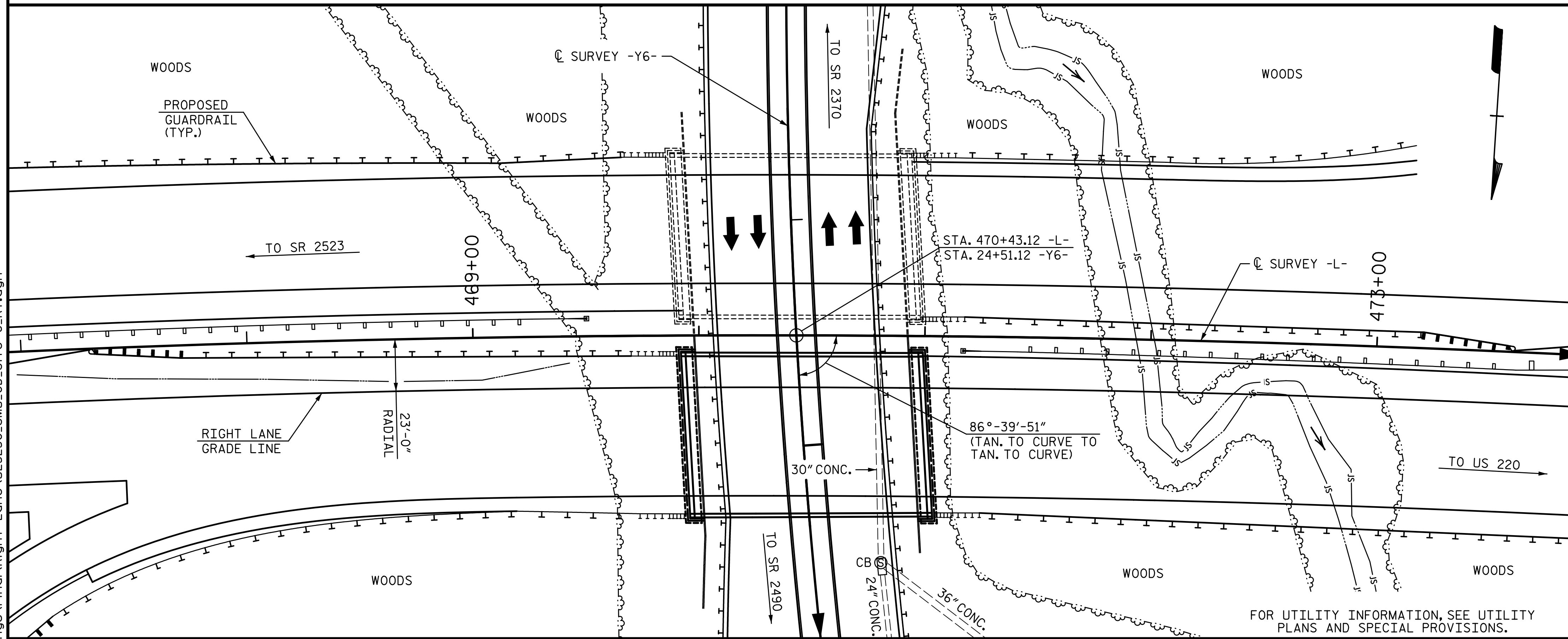


BM #9 R/R SPIKE IN 20" POPLAR, STA. 431+66.12 -L-, 221.02' RT, EL. 816.23



LOCATION SKETCH

GENERAL NOTES:

- ASSUMED LIVE LOAD = HL-93 OR ALTERNATE LOADING.
- THIS BRIDGE HAS BEEN DESIGNED IN ACCORDANCE WITH THE AASHTO LRFD BRIDGE DESIGN SPECIFICATIONS.
- THIS BRIDGE IS LOCATED IN SEISMIC ZONE 1.
- FOUNDATION TYPE WILL BE END BENTS ON SPREAD FOOTINGS.
- OUTSIDE EDGES OF BRIDGE DECK ARE TO BE CONSTRUCTED PARALLEL TO CHORD.
- FOR OTHER DESIGN DATA AND GENERAL NOTES, SEE "STANDARD NOTES" SHEET.
- REMOVABLE FORMS MAY BE USED IN LIEU OF METAL STAY-IN-PLACE FORMS IN ACCORDANCE WITH ARTICLE 420-3 OF THE STANDARD SPECIFICATIONS.
- FOR SUBMITTAL OF WORKING DRAWINGS, SEE SPECIAL PROVISIONS.
- FOR FALSEWORK AND FORMWORK, SEE SPECIAL PROVISIONS.
- FOR CRANE SAFETY, SEE SPECIAL PROVISIONS.
- FOR GROUT FOR STRUCTURES, SEE SPECIAL PROVISIONS.
- FOR EROSION CONTROL MEASURES, SEE EROSION CONTROL PLANS.
- NEEDLE BEAMS WILL NOT BE ALLOWED UNLESS OTHERWISE CALLED FOR ON THE PLANS OR APPROVED BY THE ENGINEER.
- THE CLASS AA CONCRETE IN THE BRIDGE DECK SHALL CONTAIN FLY ASHE OR GROUND GRANULATED BLAST FURNACE SLAG AT THE SUBSTITUTION RATE SPECIFIED IN ARTICLE 1024-1 AND IN ACCORDANCE WITH ARTICLES 1024-5 AND 1024-6 OF THE STANDARD SPECIFICATIONS. NO PAYMENT WILL BE MADE FOR THIS SUBSTITUTION AS IT IS CONSIDERED INCIDENTAL TO THE COST OF THE REINFORCED CONCRETE DECK SLAB.
- PRESTRESSED CONCRETE DECK PANELS MAY BE USED IN LIEU OF METAL STAY-IN-PLACE FORMS IN ACCORDANCE WITH ARTICLE 420-3 OF THE STANDARD SPECIFICATIONS.
- FOR MSE WALL DETAILS AND PAY ITEMS, SEE MSE WALL PLAN SHEETS.
- FOR MAINTENANCE AND PROTECTION OF TRAFFIC BENEATH PROPOSED STRUCTURE, SEE SPECIAL PROVISIONS.

THE ELEVATION AND CLEARANCE SHOWN ON THE PLANS AT THE POINT OF MINIMUM VERTICAL CLEARANCE ARE FROM THE BEST INFORMATION AVAILABLE. PRIOR TO BEGINNING BRIDGE CONSTRUCTION, VERIFY THE ELEVATION ON THE EXISTING PAVEMENT AND CHECK THE CLEARANCE. REPORT ANY VARIATIONS TO THE ENGINEER. ANY PLAN REVISIONS NECESSARY TO ACHIEVE THE REQUIRED MINIMUM VERTICAL CLEARANCE WILL BE PROVIDED BY THE DEPARTMENT.

TOTAL BILL OF MATERIAL

	REINFORCED CONCRETE DECK SLAB	GROOVING BRIDGE FLOORS	CLASS A CONCRETE (BRIDGE)	BRIDGE APPROACH SLABS	REINFORCING STEEL (BRIDGE)	MODIFIED 63" PRESTRESSED CONC GIRDERS	CONCRETE BARRIER RAIL	4" SLOPE PROTECTION	ELASTOMERIC BEARING	EXPANSION JOINT SEALS
	SF	SF	CY	LS	LB	NO.	LF	SY	LS	LS
SUPERSTRUCTURE	7,595	9,870				8	863.33	257.9		
END BENT 1			100.2		11,062			6		
END BENT 2			100.2		11,060			6		
TOTAL	7,595	9,870	200.4	LS	22,122	8	863.33	12	LS	LS

PROJECT NO. U-2525C

GUILFORD COUNTY

STATION: 470+43.12 -L-
24+51.12 -Y6-

SHEET 4 OF 5

STATE OF NORTH CAROLINA
DEPARTMENT OF TRANSPORTATION
RALEIGH

GENERAL DRAWING
FOR BRIDGE ON I-85 BYPASS
OVER NORTH ELM STREET
BETWEEN SR 2523 AND US 220

RIGHT LANE

REVISIONS

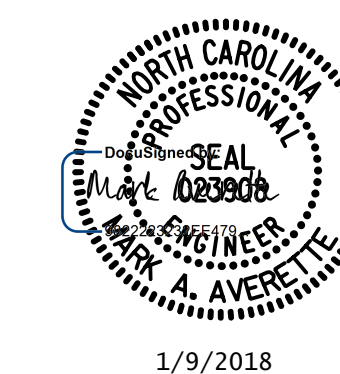
NO.	BY:	DATE:	NO.	BY:	DATE:	SHEET NO.
1			3			S9-4
2			4			TOTAL SHEETS 32

PLANS PREPARED BY:

SE & A ENGINEERS & ARCHITECTS ASSOCIATES

5640 Dillard Drive
Suite 200
Cary, NC 27518
(919) 852-0468
(919) 852-0538 (Fax)
www.simpsonengr.com

LICENSURE NO. C-2521



1/9/2018

**DOCUMENT NOT CONSIDERED FINAL
UNLESS ALL SIGNATURES COMPLETED**

DRAWN BY: R. SEALEY DATE: 8-17
CHECKED BY: M.A. AVERETTE DATE: 8-17
DESIGN ENGINEER OF RECORD: M.A. AVERETTE DATE: 8-17

1/9/2018 2:50:13 PM G:\Projects\2016\U-2525C (Greensboro Eastern Loop)\Structures\Site\Drawings\Final\Right Lane\U2525C_SMU_CD_Site 6_RT.dgn