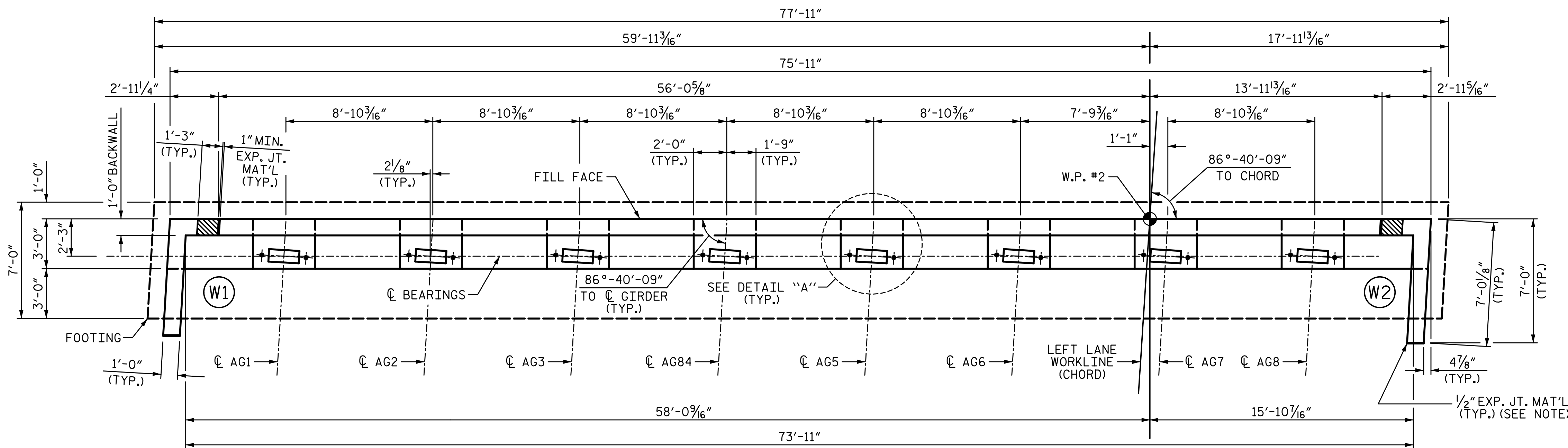


9/13/2017 1:16:38 PM G:\Projects\2016\U-2525C (Greensboro Eastern Loop)\Drawings\Final\Left Lane\U2525C_SMU_EB2_Site 8_L.T.dgn



NOTES:

FOR SECTIONS A-A, B-B, & C-C SEE SHEET 3 OF 4.

1/2" EXPANSION JOINT MATERIAL IS TO BE PLACED BETWEEN WINGWALLS AND MSE WALLS.

THE TOP SURFACE AREAS OF THE END BENT CAP SHALL BE CURED IN ACCORDANCE WITH THE STANDARD SPECIFICATIONS EXCEPT THE MEMBRANE CURING COMPOUND METHOD SHALL NOT BE USED.

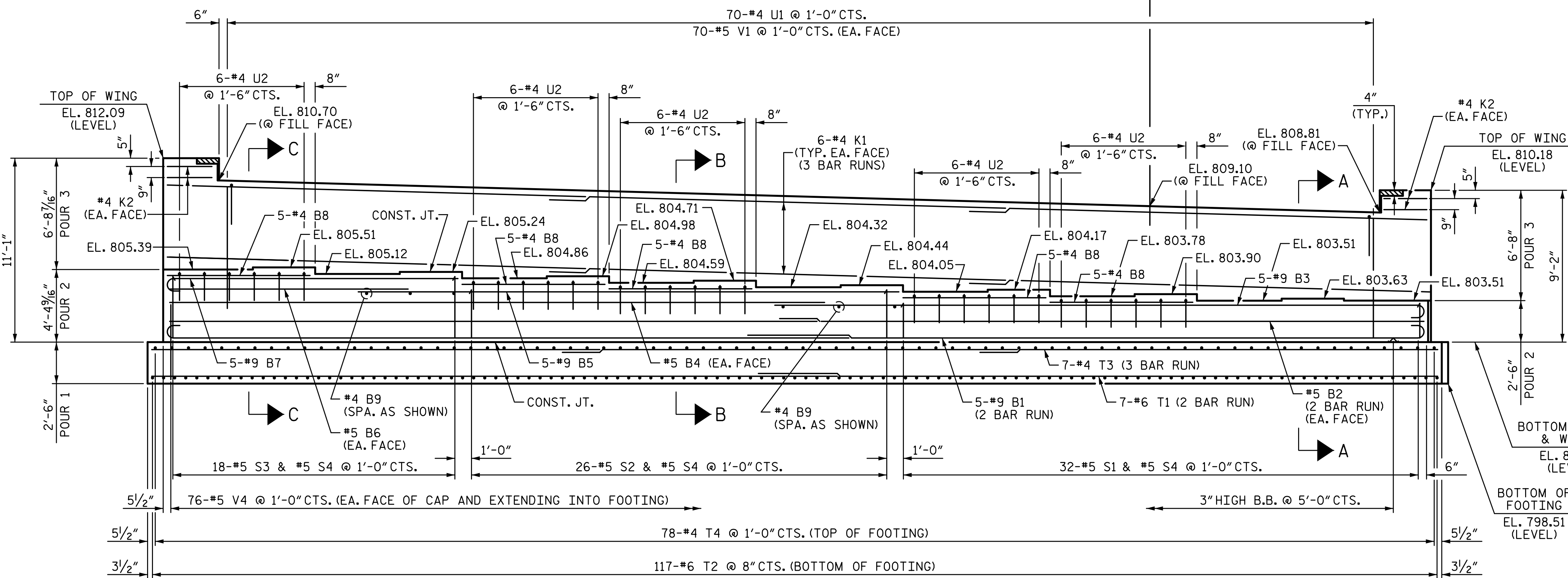
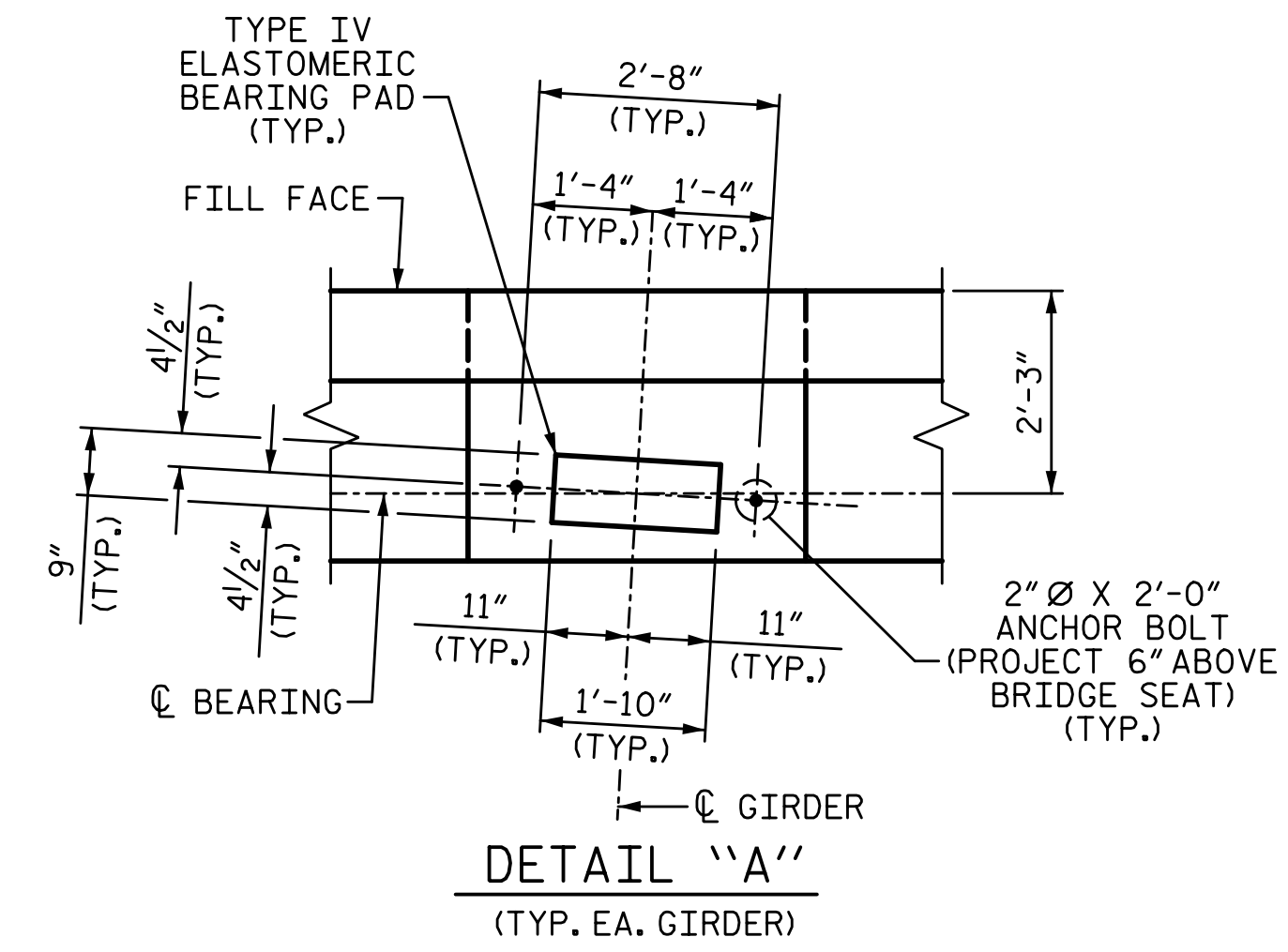
THE TOP SURFACE OF THE CAP EXCEPT THE BRIDGE SEAT BUILDUPS SHALL BE SLOPED TRANSVERSELY FROM THE FILL FACE TO THE BACK FACE AT THE RATE OF 2%.

STIRRUPS IN CAP MAY BE SHIFTED AS NECESSARY TO CLEAR ANCHOR BOLTS.

BACKWALL SHALL BE PLACED BEFORE APPLYING THE EPOXY PROTECTIVE COATING.

THE MSE WALL IS NOT SHOWN, FOR MSE WALL AND MSE REINFORCING STRAPS, SEE MSE WALL PLANS AND SPECIAL PROVISIONS.

THE CONCRETE IN THE SHADED AREA OF THE WING SHALL BE POURED AFTER THE BARRIER RAILS ARE CAST IF SLIP FORMING IS USED.



SPLICE CHART	
#9 B1 SPLICE LENGTH =	6'-3"
#5 B2 SPLICE LENGTH =	3'-0"
#5 B4 SPLICE LENGTH =	3'-0"
#5 B6 SPLICE LENGTH =	3'-0"
#4 K1 SPLICE LENGTH =	2'-5"
#6 T1 SPLICE LENGTH =	3'-10"
#4 T3 SPLICE LENGTH =	2'-5"

PROJECT NO. U-2525C
GUILFORD COUNTY
 STATION: 470+43.12 -L-
 SHEET 1 OF 4

STATE OF NORTH CAROLINA DEPARTMENT OF TRANSPORTATION RALEIGH SUBSTRUCTURE					
END BENT 2					
LEFT LANE					
REVISIONS					
NO.	BY:	DATE:	NO.	BY:	DATE:
1			3		
2			4		
					SHEET NO. S8-27
					TOTAL SHEETS 32

PLANS PREPARED BY:
SEALEY & ASSOCIATES
 IMPSON ENGINEERS ASSOCIATES
 5640 Dillard Drive
 Suite 200
 Cary, NC 27518
 (919) 852-0468
 (919) 852-0598 (Fax)
 www.simpsonengr.com
 LICENSURE NO. C-2521



DRAWN BY: R. SEALEY DATE: 8-17
 CHECKED BY: M.A. AVERETTE DATE: 8-17
 DESIGN ENGINEER OF RECORD: M.A. AVERETTE DATE: 8-17

**DOCUMENT NOT CONSIDERED FINAL
 UNLESS ALL SIGNATURES COMPLETED**