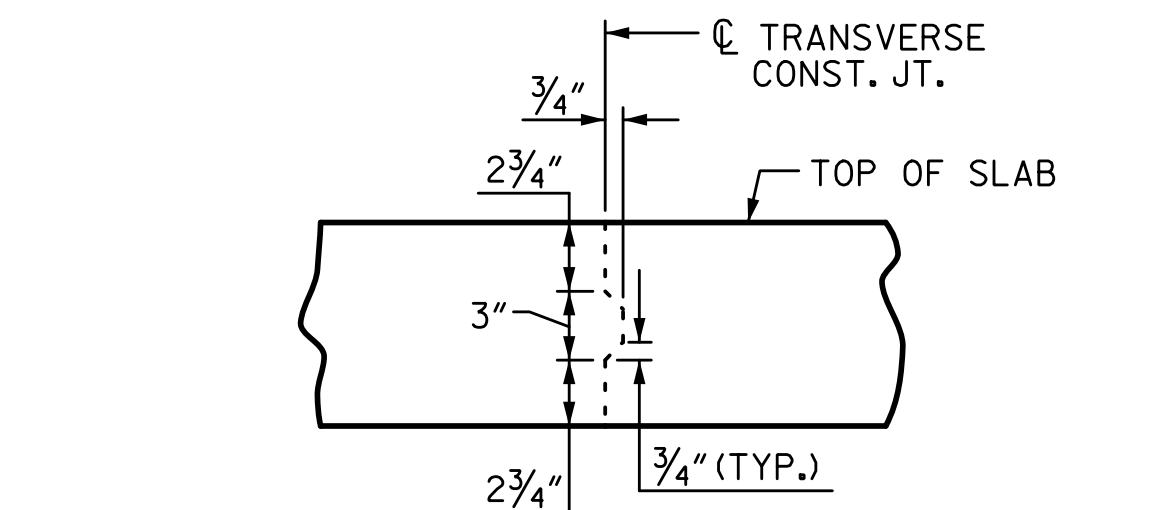


9/13/2017 1:16:36 PM G:\Projects\2016\U-2525C (Greensboro Eastern Loop)\Structures\Site 8\Drawings\Final\Lane\U2525C_SMU_BM_Site 8.L.T.dgn

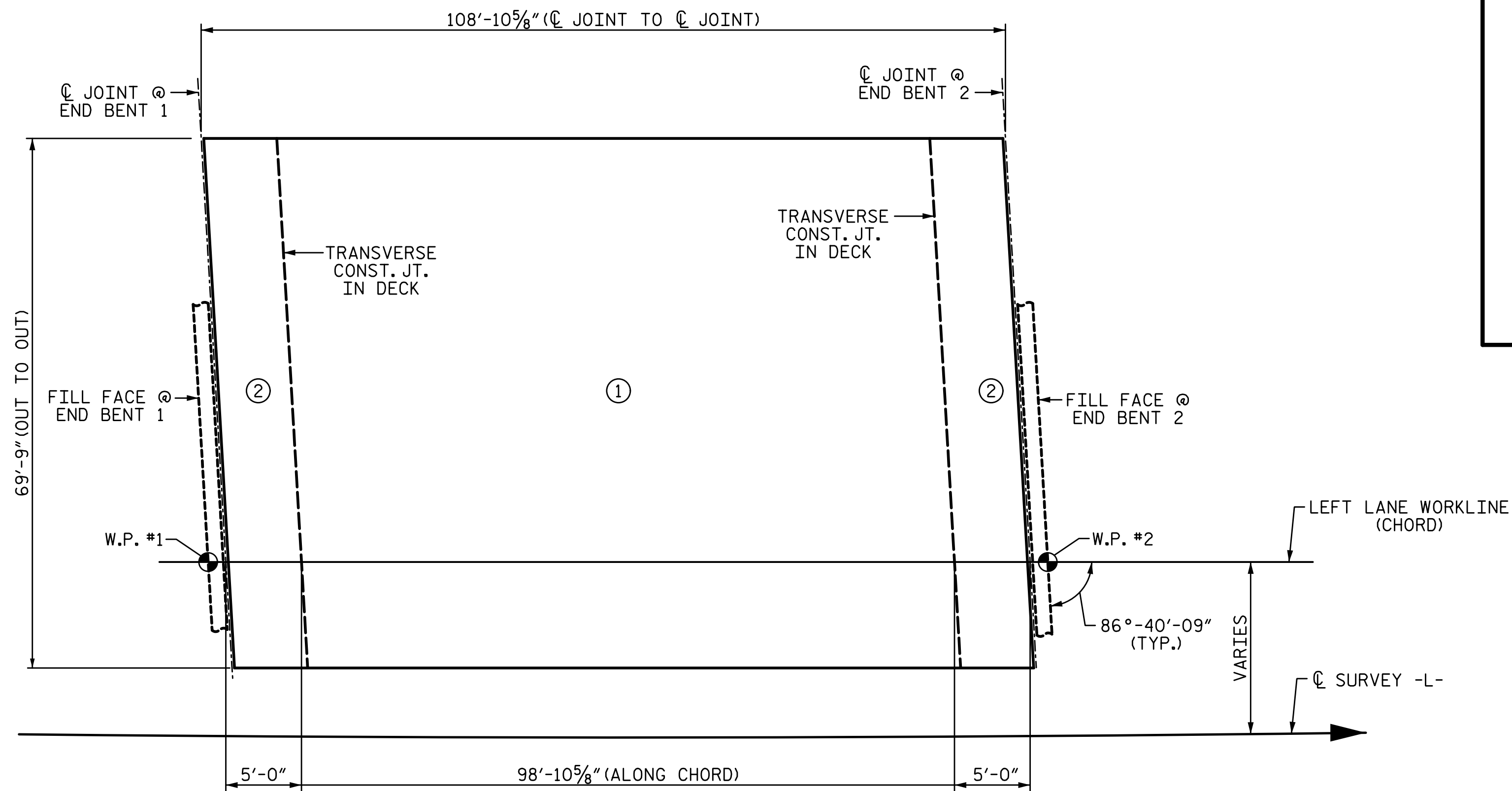
SUPERSTRUCTURE REINFORCING STEEL LENGTHS ARE BASED ON THE FOLLOWING MINIMUM SPLICE LENGTHS					
BAR SIZE	SUPERSTRUCTURE EXCEPT APPROACH SLABS, PARAPET, AND BARRIER RAIL		APPROACH SLABS		PARAPET AND BARRIER RAIL
	EPOXY COATED	UNCOATED	EPOXY COATED	UNCOATED	
#4	2'-0"	1'-9"	2'-0"	1'-9"	2'-9"
#5	2'-6"	2'-2"	2'-6"	2'-2"	3'-5"
#6	3'-0"	2'-7"	3'-10"	2'-7"	4'-4"
#7	5'-3"	3'-6"			
#8	6'-10"	4'-7"			

GROOVING BRIDGE FLOORS		
APPROACH SLABS	3,027	SF
BRIDGE DECK	6,843	SF
TOTAL	9,870	SF



TRANSVERSE CONSTRUCTION JOINT DETAIL

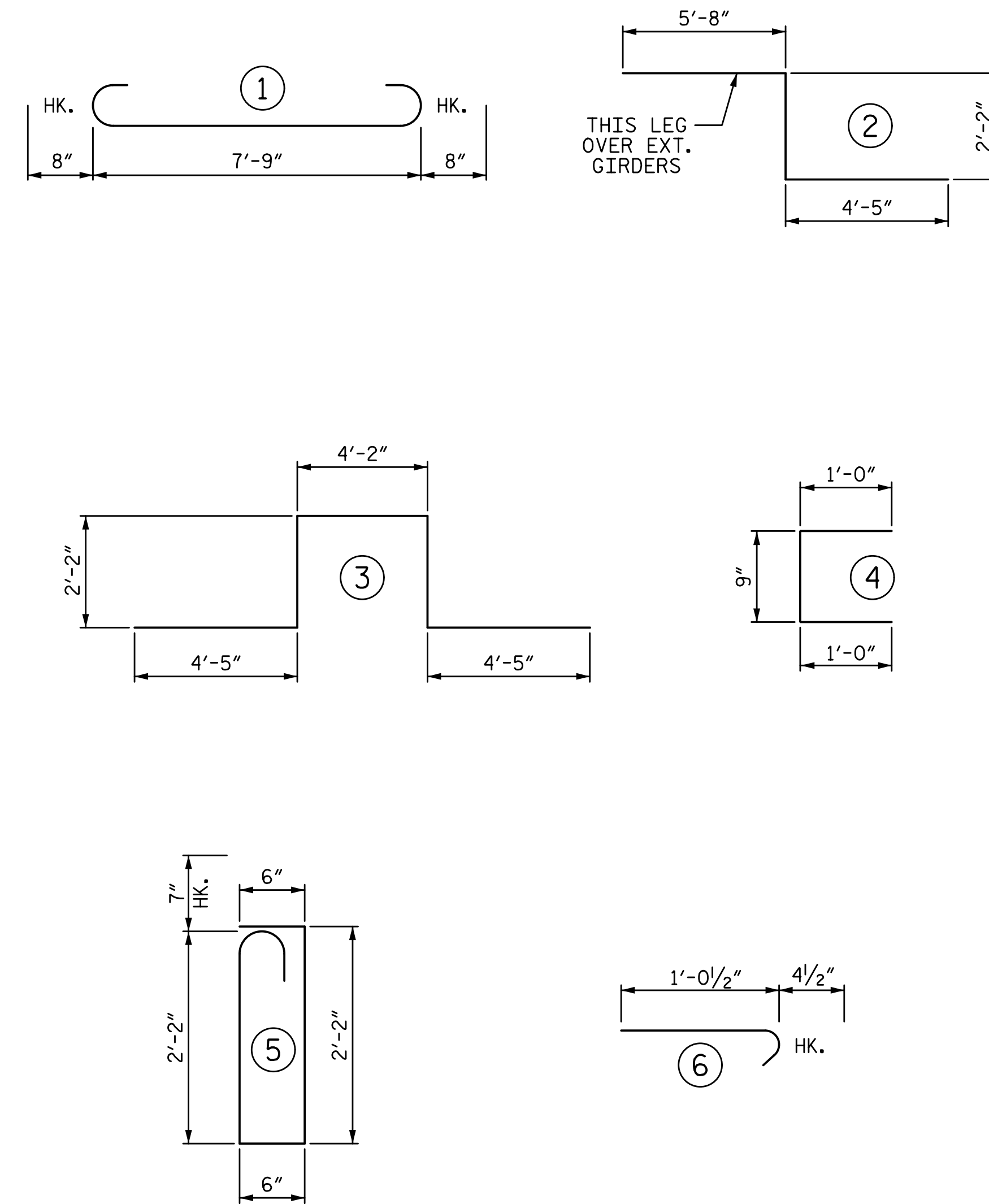
NOTE: REINFORCING STEEL IN SLAB NOT SHOWN. LONGITUDINAL REINFORCING STEEL SHALL BE CONTINUOUS THRU JOINT.



LAYOUT FOR COMPUTING REINFORCED CONCRETE DECK SLAB AREA & POUR SEQUENCE
(SF = 7,595)

DRAWN BY: S.D. COOPER DATE: 8-17
 CHECKED BY: M.A. AVERETTE DATE: 8-17
 DESIGN ENGINEER OF RECORD: M.A. AVERETTE DATE: 8-17

BAR TYPES



ALL BAR DIMENSIONS ARE OUT TO OUT

BILL OF MATERIAL

BAR	NO.	SIZE	TYPE	LENGTH	WEIGHT
* A1	342	#5	STR	36'-0"	12841
A2	169	#5	STR	49'-1"	8652
A3	172	#5	STR	22'-7"	4051
* A101	2	#5	STR	5'-1"	11
* A102	2	#5	STR	15'-10"	33
* A103	2	#5	STR	26'-7"	55
* A104	2	#5	STR	25'-4"	53
* A105	2	#5	STR	14'-7"	30
* A106	2	#5	STR	3'-10"	8
A201	1	#5	STR	6'-2"	6
A202	1	#5	STR	16'-11"	18
A203	1	#5	STR	27'-8"	29
A204	1	#5	STR	38'-5"	40
A205	1	#5	STR	48'-0"	50
A206	1	#5	STR	37'-4"	39
A207	1	#5	STR	26'-7"	28
A208	1	#5	STR	15'-10"	17
A209	1	#5	STR	5'-1"	5
A301	1	#5	STR	5'-1"	5
A302	1	#5	STR	15'-10"	17
A303	1	#5	STR	11'-11"	12
* B1	188	#4	STR	28'-8"	3600
B2	110	#5	STR	55'-4"	6348
* G1	4	#5	STR	36'-0"	150
* J1	132	#4	6	1'-5"	125
* K1	28	#6	STR	4'-10"	203
K2	28	#6	1	9'-1"	382
* K3	8	#8	2	12'-3"	262
* K4	24	#8	3	17'-4"	1111
* S1	84	#4	4	2'-9"	154
* S2	84	#5	5	5'-11"	518

REINFORCING STEEL 19699 LB

EPOXY COATED REINFORCING STEEL 19154 LB

CLASS AA CONCRETE
 POUR 1 227.5 CY
 POUR 2 28.6 CY
 TOTAL 256.1 CY

* INDICATES EPOXY COATED REINFORCING STEEL

QUANTITIES FOR BARRIER RAIL ARE NOT INCLUDED, SEE "CONCRETE BARRIER RAIL" SHEETS.

PROJECT NO. U-2525C
GUILFORD COUNTY
 STATION: 470+43.12 -L-

PLANS PREPARED BY:
SIMPSON ENGINEERS & ASSOCIATES
 5640 Dillard Drive
 Suite 200
 Cary, NC 27518
 (919) 852-0468
 (919) 852-0598 (Fax)
 www.simpsonengr.com
 LICENSURE NO. C-2521



9/13/2017

STATE OF NORTH CAROLINA
 DEPARTMENT OF TRANSPORTATION
 RALEIGH
 SUPERSTRUCTURE

BILL OF MATERIAL

LEFT LANE

REVISIONS

NO.	BY:	DATE:	NO.	BY:	DATE:	SHEET NO.
1			3			S8-22
2			4			TOTAL SHEETS 32

DOCUMENT NOT CONSIDERED FINAL UNLESS ALL SIGNATURES COMPLETED