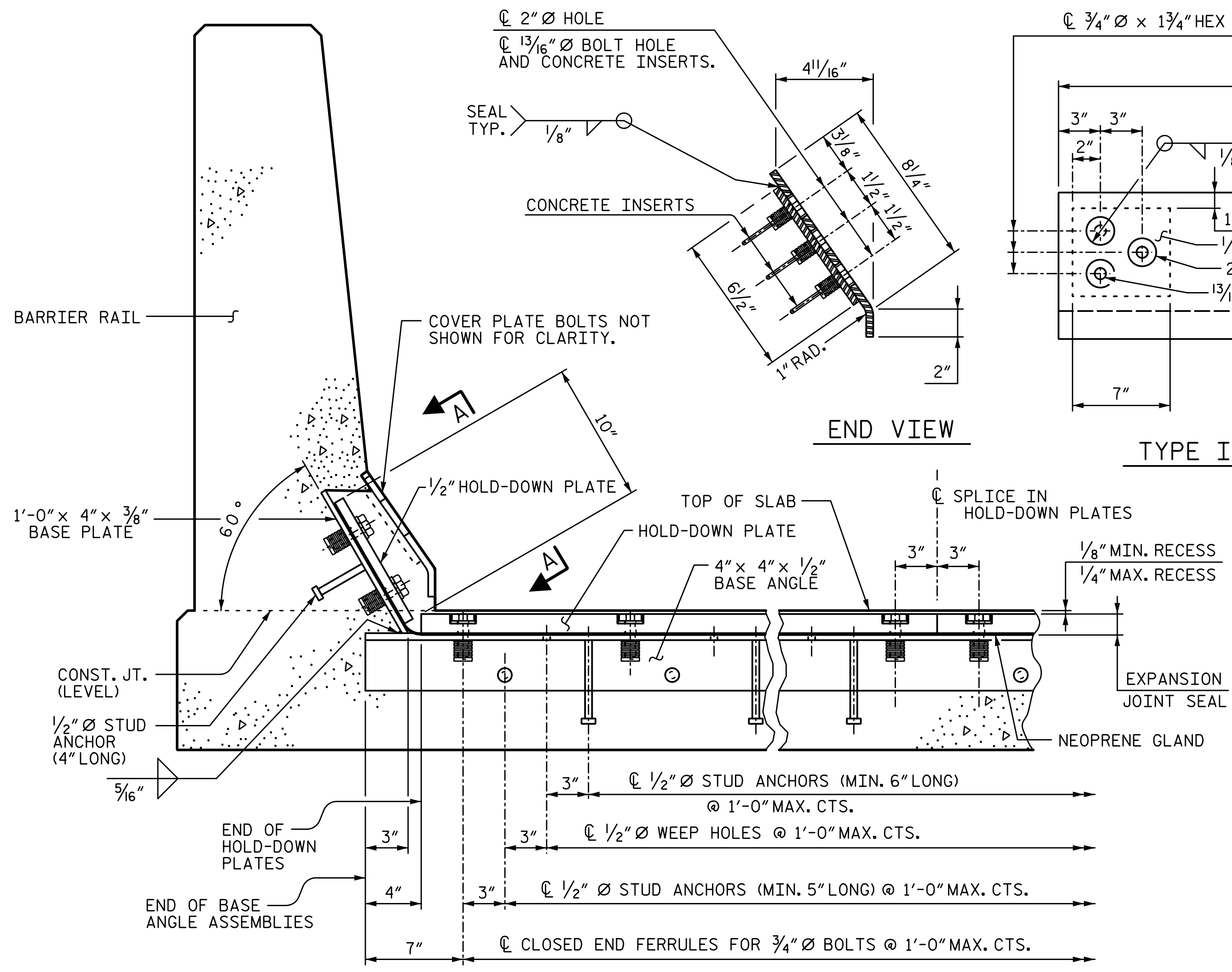
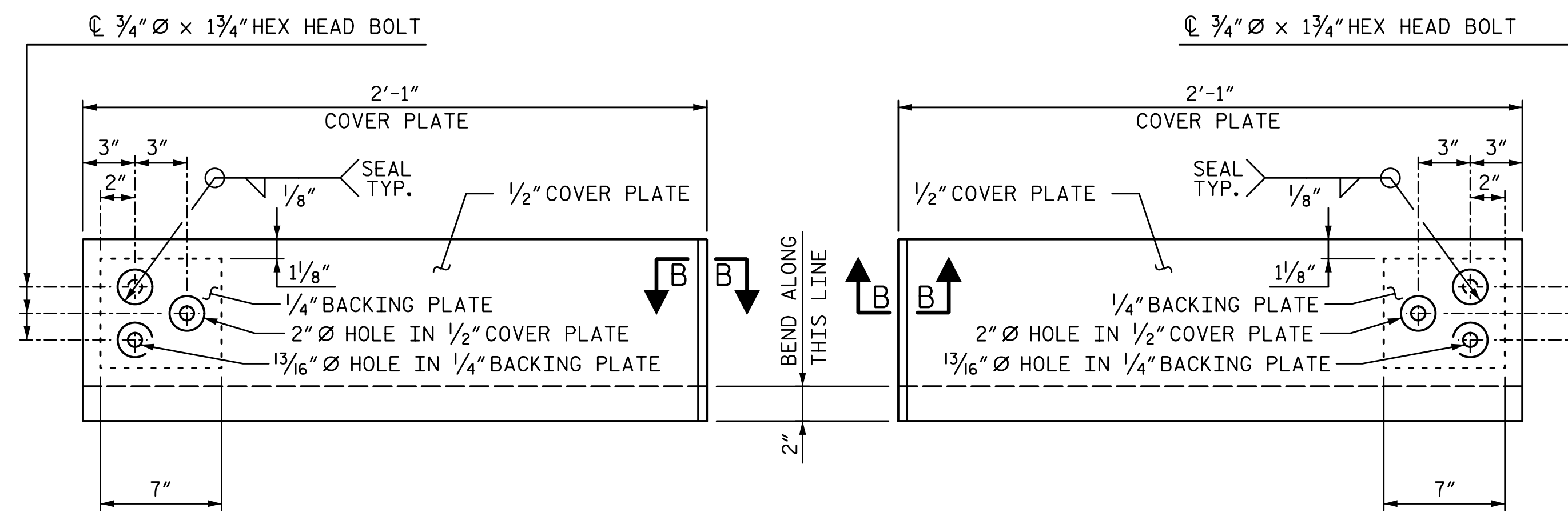


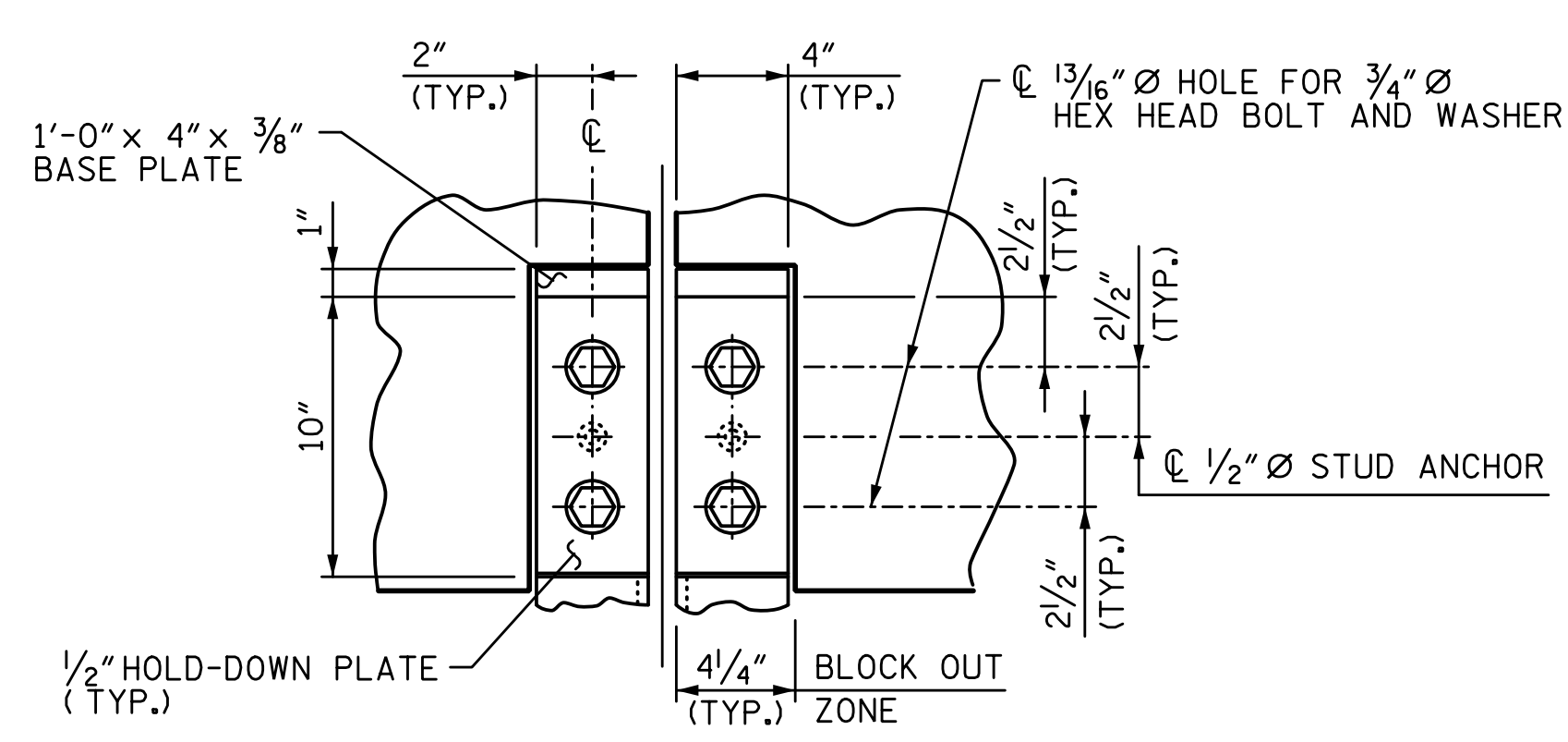
9/13/2017 1:16:35 PM G:\Projects\2016\U-2525C (Greensboro Eastern Loop)\Structures\Site & Drawings\Final\Left Lane\U2525C_SMU_US_Site 8.LT.dgn



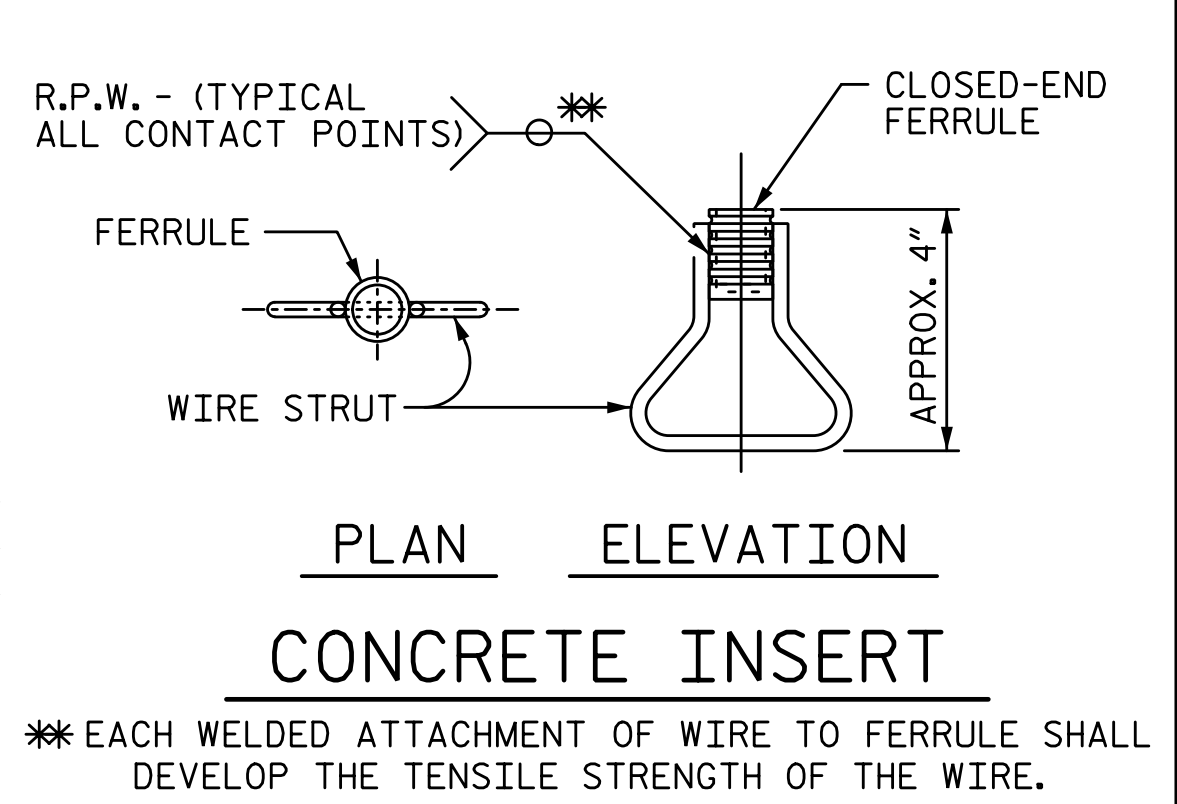
SECTION THRU RAIL NORMAL TO JOINT



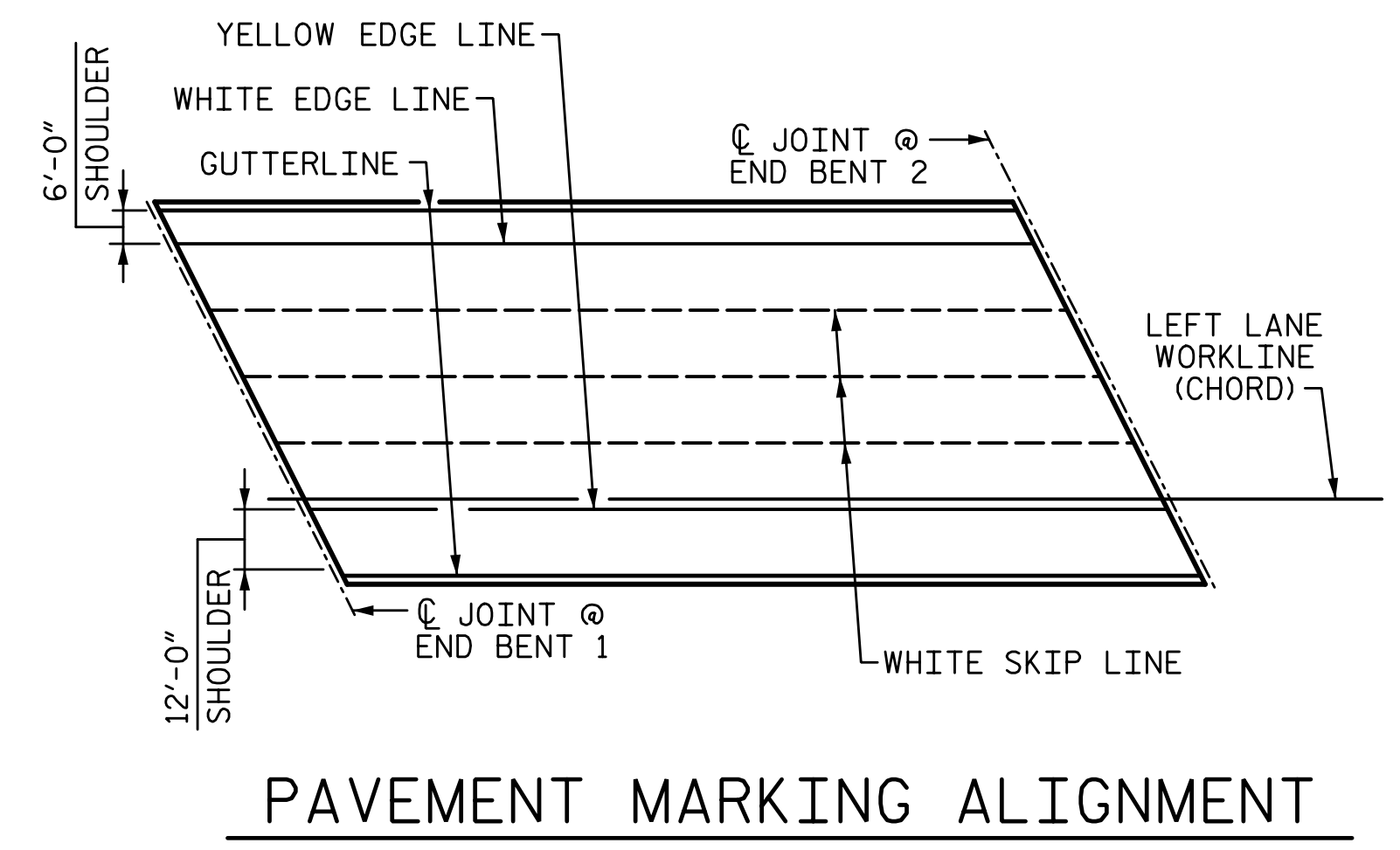
COVER PLATE DETAILS



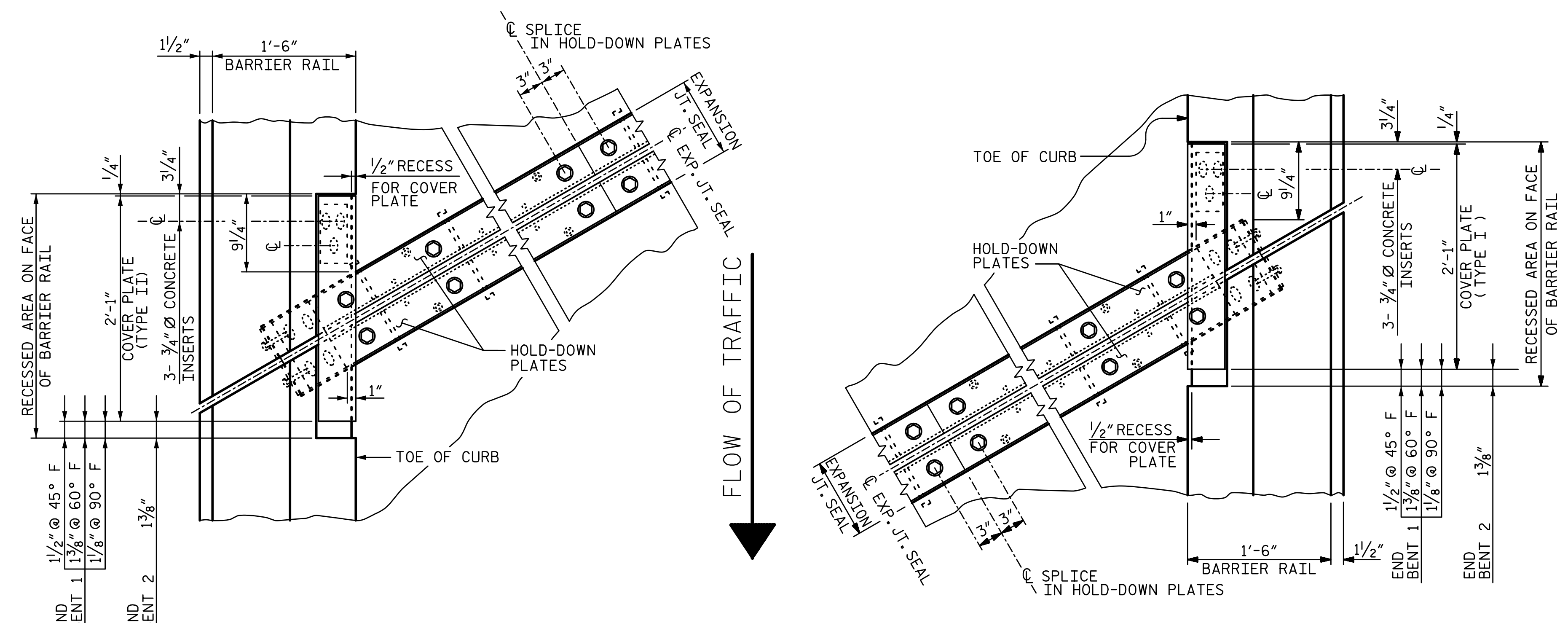
SECTION A-A



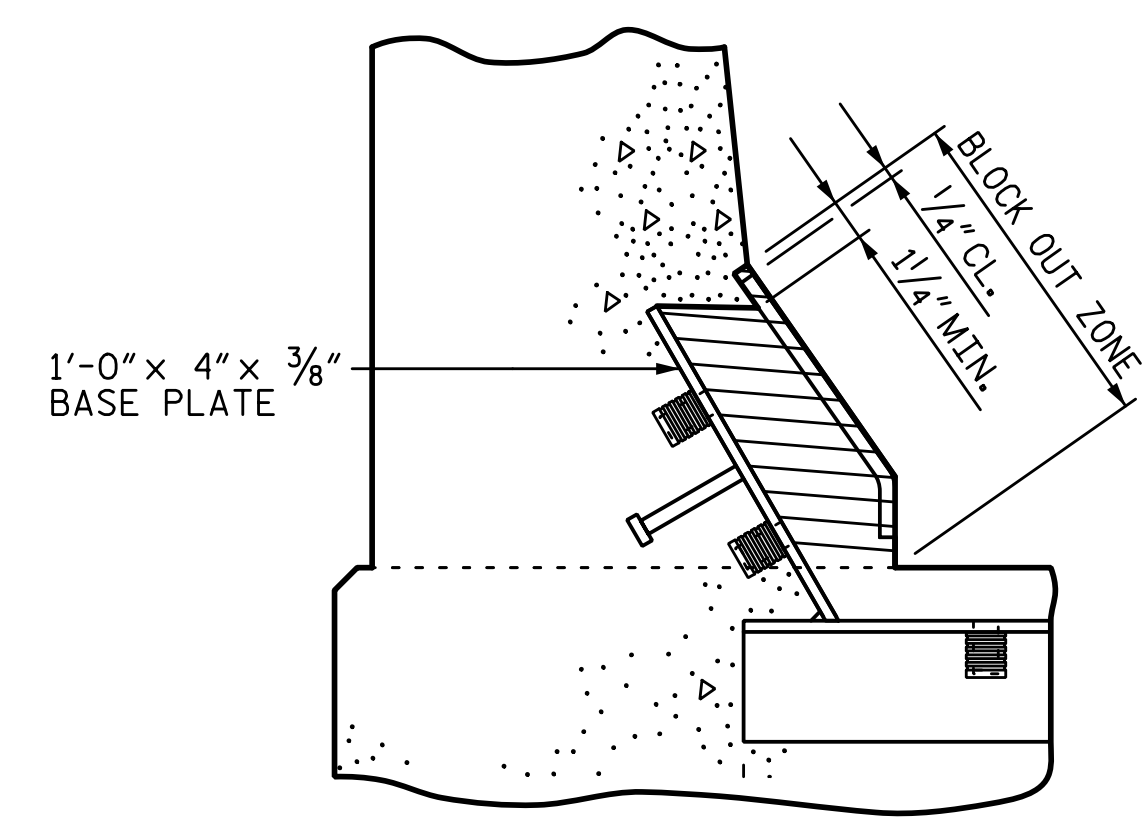
CONCRETE INSERT



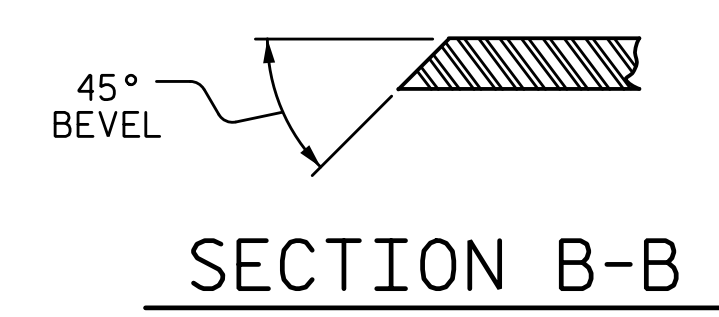
PAVEMENT MARKING ALIGNMENT



PLAN OF EXPANSION JOINT SEAL



BLOCK OUT DETAIL



SECTION B-B

PROJECT NO. U-2525C
GUILFORD COUNTY
 STATION: 470+43.12 -L-
 SHEET 2 OF 2

DRAWN BY: S.D. COOPER DATE: 8-17
 CHECKED BY: M.A. AVERETTE DATE: 8-17
 DESIGN ENGINEER OF RECORD: M.A. AVERETTE DATE: 8-17

PLANS PREPARED BY:
SIMPSON
 ENGINEERS
 & ASSOCIATES
 5640 Dillard Drive
 Suite 200
 Cary, NC 27518
 (919) 852-0468
 (919) 852-0538 (Fax)
 www.simpsonengr.com
 LICENSURE NO. C-2521



STATE OF NORTH CAROLINA
 DEPARTMENT OF TRANSPORTATION
 RALEIGH
 SUPERSTRUCTURE
EXPANSION JOINT SEAL DETAILS
 LEFT LANE

REVISIONS						SHEET NO.
NO.	BY:	DATE:	NO.	BY:	DATE:	S8-21
1			3			TOTAL SHEETS
2			4			32

DOCUMENT NOT CONSIDERED FINAL
 UNLESS ALL SIGNATURES COMPLETED