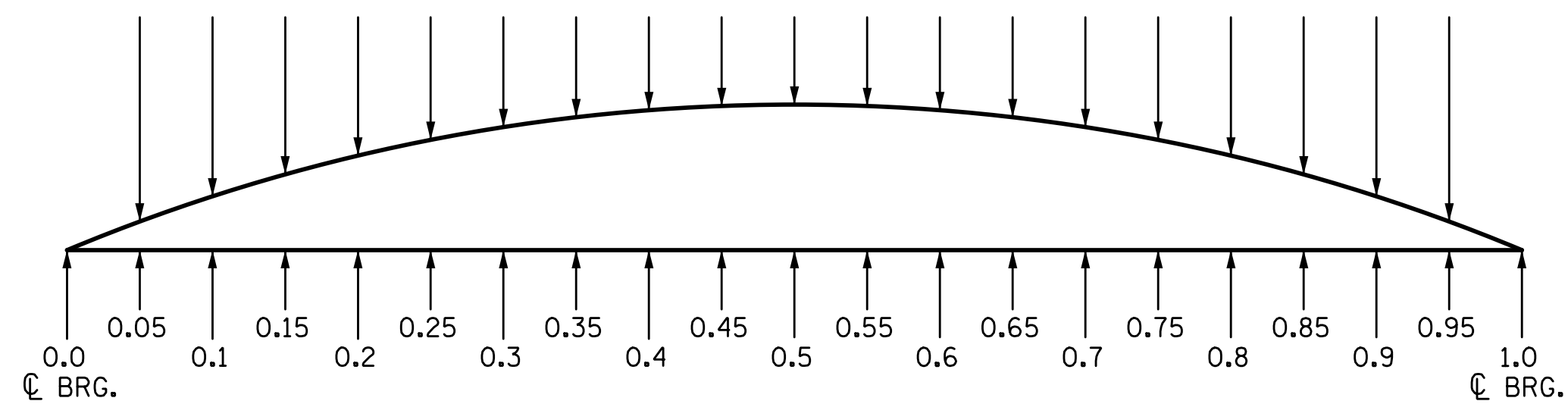


9/13/2017 1:16:33 PM G:\Projects\2016\U-2525C (Greensboro Eastern Loop)\Structures\Site 8\Drawings\Final\Left Lane\U2525C_SMU_DL_Site 8.LT.dgn

DEAD LOAD DEFLECTION AND CAMBER TABLE FOR GIRDERS - SPAN "A"

GIRDER		TWENTIETH POINTS																				
		0	0.05	0.1	0.15	0.2	0.25	0.3	0.35	0.4	0.45	0.5	0.55	0.6	0.65	0.7	0.75	0.8	0.85	0.9	0.95	1.0
AG1-AG8	CAMBER (GIRDER ALONE IN PLACE) ↑	0.000	0.040	0.080	0.117	0.151	0.181	0.206	0.227	0.241	0.251	0.254	0.251	0.241	0.227	0.206	0.181	0.151	0.117	0.080	0.040	0.000
	DEFLECTION DUE TO SUPERIMPOSED D.L. * ↓	0.000	0.022	0.047	0.070	0.092	0.111	0.127	0.140	0.150	0.155	0.157	0.155	0.150	0.140	0.127	0.111	0.092	0.070	0.047	0.022	0.000
	FINAL CAMBER ↑	0	3/16"	3/8"	9/16"	1 1/16"	1 3/16"	1 5/16"	1 1/16"	1 1/8"	1 1/8"	1 3/16"	1 1/8"	1 1/8"	1 1/16"	1 5/16"	1 3/16"	1 1/16"	9/16"	3/8"	3/16"	0



SCHEMATIC CAMBER ORDINATES @ GIRDER TWENTIETH POINTS

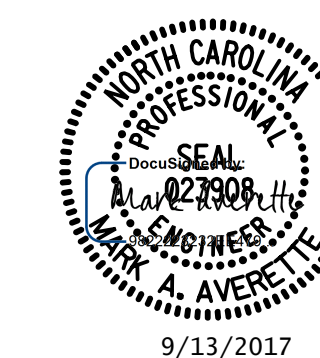
DEFLECTIONS ARE IN FEET (DECIMAL FORM) AT TWENTIETH POINTS BETWEEN BEARINGS, FINAL CAMBER VALUES ARE IN INCHES (FRACTIONAL FORM).

* INCLUDES FUTURE WEARING SURFACE IN SUPERIMPOSED DEAD LOAD

PROJECT NO. U-2525C
GUILFORD COUNTY
 STATION: 470+43.12 -L-

DRAWN BY: S.D. COOPER DATE: 8-17
 CHECKED BY: M.A. AVERETTE DATE: 8-17
 DESIGN ENGINEER OF RECORD: M.A. AVERETTE DATE: 8-17

PLANS PREPARED BY:
SIMPSON ENGINEERS & ASSOCIATES
 5640 Dillard Drive
 Suite 200
 Cary, NC 27518
 (919) 852-0468
 (919) 852-0598 (Fax)
 www.simpsonengr.com
 LICENSURE NO. C-2521



STATE OF NORTH CAROLINA
 DEPARTMENT OF TRANSPORTATION
 RALEIGH
 SUPERSTRUCTURE
**DEAD LOAD DEFLECTION
 AND GIRDER CAMBER**
 LEFT LANE

REVISIONS				SHEET NO.	
NO.	BY:	DATE:	NO.	BY:	DATE:
1			3		
2			4		
					S8-16
					TOTAL SHEETS 32

**DOCUMENT NOT CONSIDERED FINAL
 UNLESS ALL SIGNATURES COMPLETED**