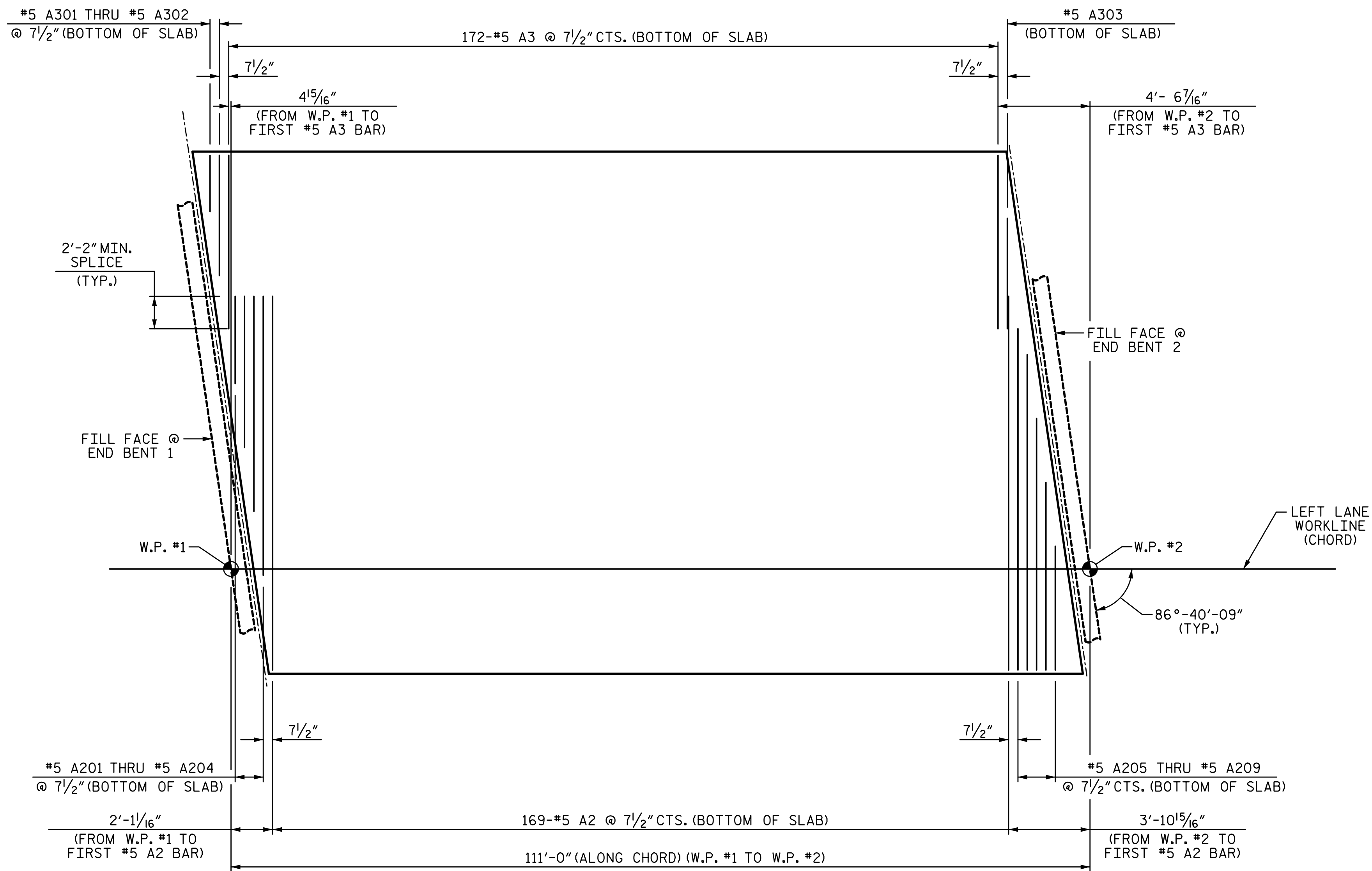


9/13/2017 1:16:30 PM G:\Projects\2016\U-2525C (Greensboro Eastern Loop)\Structures\Site 8\Drawings\Final\Left Lane\U2525C\_SMU\_Ps\_Site 8\_L1.dgn



### BOTTOM "A" BAR LAYOUT

(\*5 "A" BARS ARE TO BE PLACED PERPENDICULAR TO THE CHORD AND SPACED ALONG THE CHORD)

PROJECT NO. U-2525C  
GUILFORD COUNTY  
 STATION: 470+43.12 -L-

SHEET 2 OF 2

STATE OF NORTH CAROLINA  
 DEPARTMENT OF TRANSPORTATION  
 RALEIGH  
 SUPERSTRUCTURE

"A" BAR LAYOUT

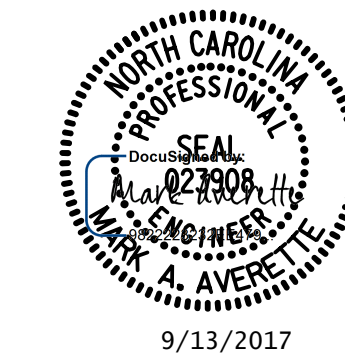
LEFT LANE

REVISIONS

NO.	BY:	DATE:	NO.	BY:	DATE:	SHEET NO.
1			3			S8-10
2			4			TOTAL SHEETS 32

PLANS PREPARED BY:

**SE & A**  
 SIMPSON ENGINEERS ASSOCIATES  
 5640 Dillard Drive  
 Suite 200  
 Cary, NC 27518  
 (919) 852-0468  
 (919) 852-0598 (Fax)  
 www.simpsonengr.com  
 LICENSURE NO. C-2521



9/13/2017

**DOCUMENT NOT CONSIDERED FINAL  
 UNLESS ALL SIGNATURES COMPLETED**

DRAWN BY: S.D. COOPER DATE: 8-17  
 CHECKED BY: M.A. AVERETTE DATE: 8-17  
 DESIGN ENGINEER OF RECORD: M.A. AVERETTE DATE: 8-17