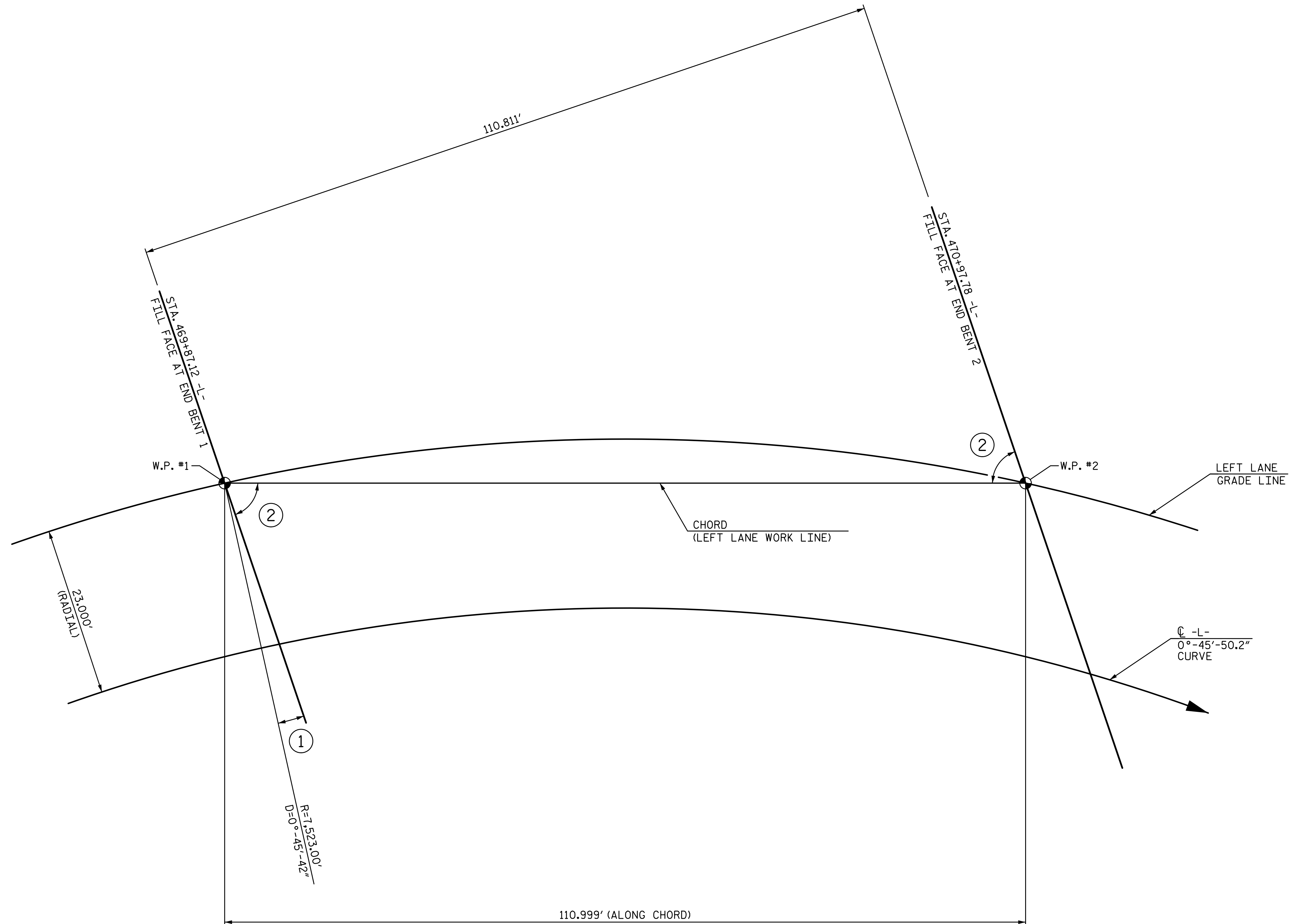


9/13/2017 1:16:28 PM G:\Projects\2016\U-2525C (Greensboro Eastern Loop)\Structures\Site 8\Drawings\Final\Left Lane\U2525C\_SMU\_GD\_Site 8.LT.dgn



**CHORD LAYOUT**

**ANGLES**

- ① 2°-54'-29"
- ② 86°-40'-09"

PROJECT NO. U-2525C  
GUILFORD COUNTY  
 STATION: 470+43.12 -L-  
24+51.12 -Y6-  
 SHEET 3 OF 5

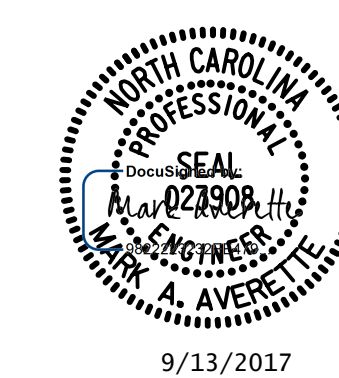
STATE OF NORTH CAROLINA  
 DEPARTMENT OF TRANSPORTATION  
 RALEIGH

**GENERAL DRAWING**  
 FOR BRIDGE ON I-85 BYPASS  
 OVER NORTH ELM STREET  
 BETWEEN SR 2523 AND US 220

LEFT LANE

| REVISIONS |     |       |     | SHEET NO. |              |
|-----------|-----|-------|-----|-----------|--------------|
| NO.       | BY: | DATE: | NO. | BY:       | DATE:        |
| 1         |     |       | 3   |           |              |
| 2         |     |       | 4   |           |              |
|           |     |       |     |           | TOTAL SHEETS |
|           |     |       |     |           | 32           |

PLANS PREPARED BY:  
**SE & A**  
 SIMPSON ENGINEERS & ASSOCIATES  
 5640 Dillard Drive  
 Suite 200  
 Cary, NC 27518  
 (919) 852-0468  
 (919) 852-0598 (Fax)  
 www.simpsonengr.com  
 LICENSURE NO. C-2521



**DOCUMENT NOT CONSIDERED FINAL  
 UNLESS ALL SIGNATURES COMPLETED**

|   |                   |
|---|-------------------|
| DRAWN BY: <u>R. SEALEY</u>                      | DATE: <u>8-17</u> |
| CHECKED BY: <u>M.A. AVERETTE</u>                | DATE: <u>8-17</u> |
| DESIGN ENGINEER OF RECORD: <u>M.A. AVERETTE</u> | DATE: <u>8-17</u> |