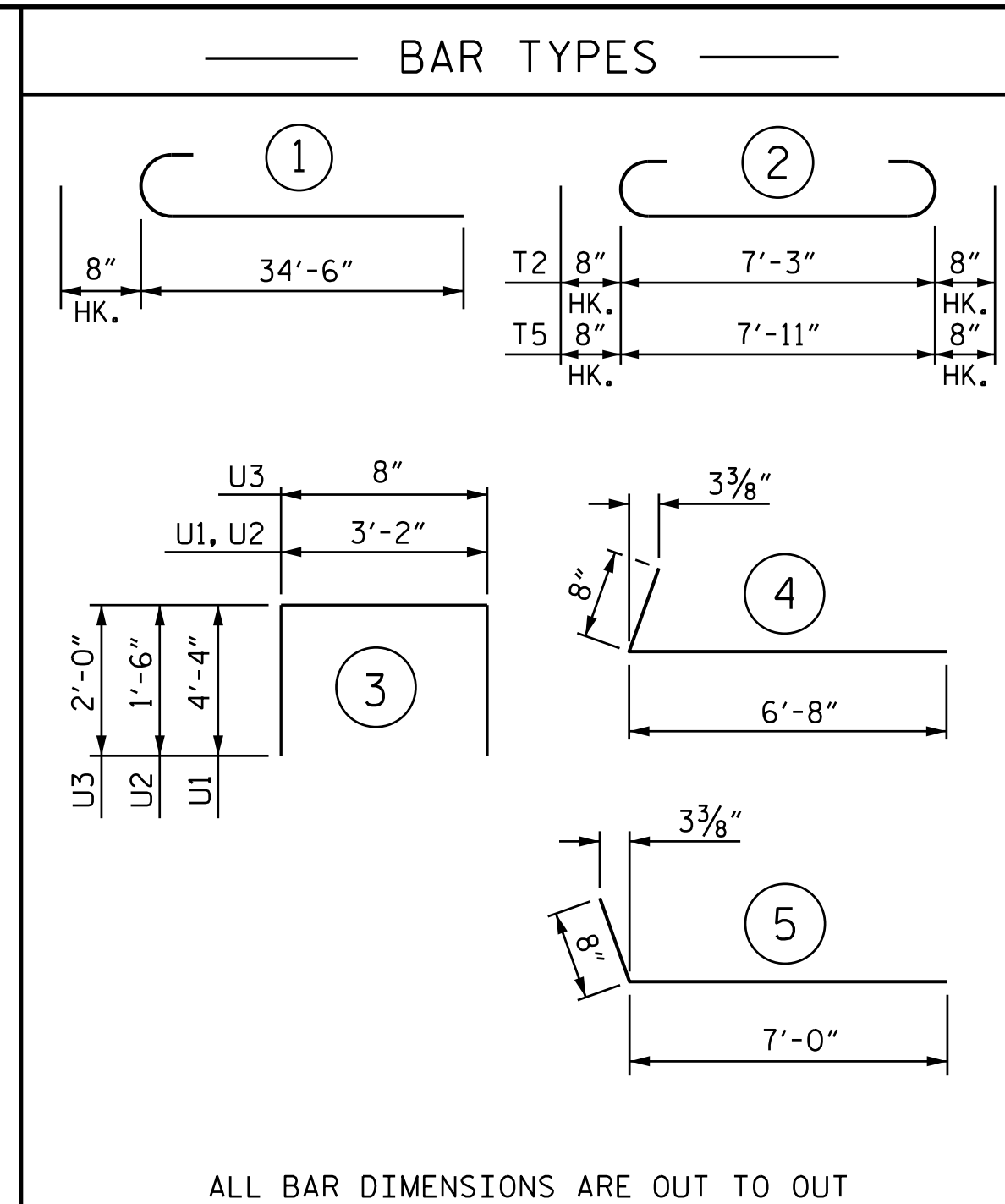


PLAN OF FOOTING



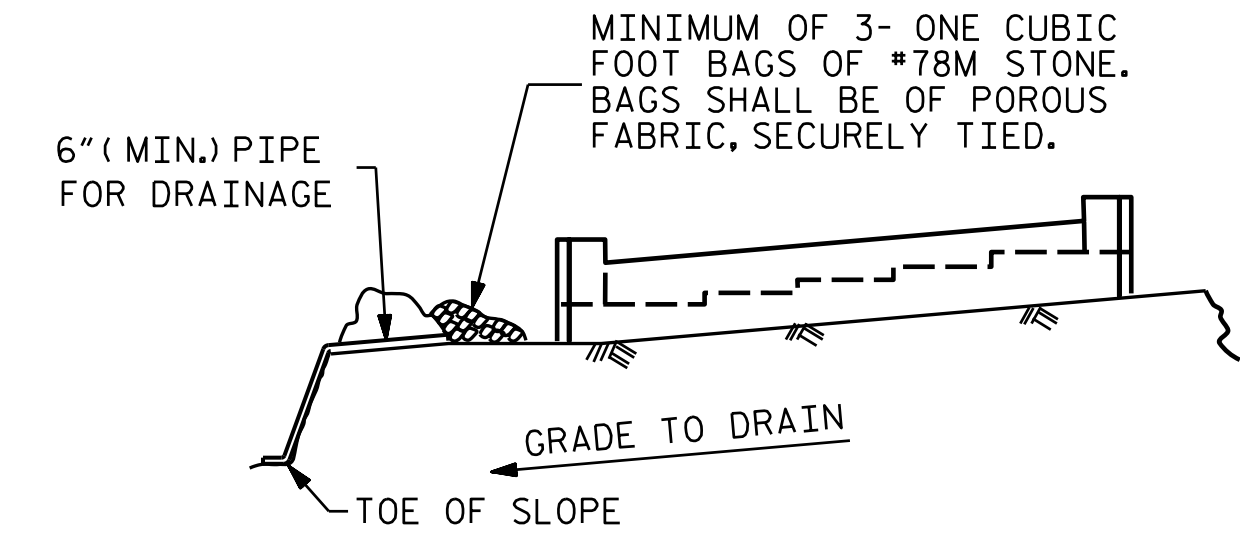
ALL BAR DIMENSIONS ARE OUT TO OUT

BILL OF MATERIAL

END BENT 2					
BAR	NO.	SIZE	TYPE	LENGTH	WEIGHT
B1	8	#9	STR	35'-10"	975
B2	18	#4	STR	22'-7"	272
B3	4	#4	STR	20'-5"	55
B4	4	#4	STR	3'-1"	8
H1	22	#4	5	7'-8"	113
H2	24	#4	4	7'-4"	118
K1	30	#4	STR	22'-7"	453
K2	8	#4	STR	3'-5"	18
T1	16	#6	1	35'-2"	845
T2	69	#6	2	8'-7"	890
T3	16	#5	STR	34'-7"	577
T4	69	#5	STR	7'-3"	522
T5	2	#6	2	9'-3"	28
T6	2	#5	STR	7'-11"	17
U1	61	#5	3	11'-10"	753
U2	17	#4	3	6'-2"	70
U3	55	#4	3	4'-8"	171
V1	110	#5	STR	6'-6"	746
V2	20	#4	STR	8'-5"	112
V3	2	#4	STR	10'-5"	14
V4	20	#4	STR	8'-10"	118
V5	2	#4	STR	10'-10"	14

REINFORCING STEEL = 6,889 LBS

CLASS A CONCRETE:	
POUR #1: FOOTING	43.1 CY
POUR #2: CAP & BOTTOM OF WINGS	23.1 CY
POUR #3: BACKWALL & TOP OF WINGS	13.8 CY
CLASS A CONCRETE TOTAL:	80.0 CY

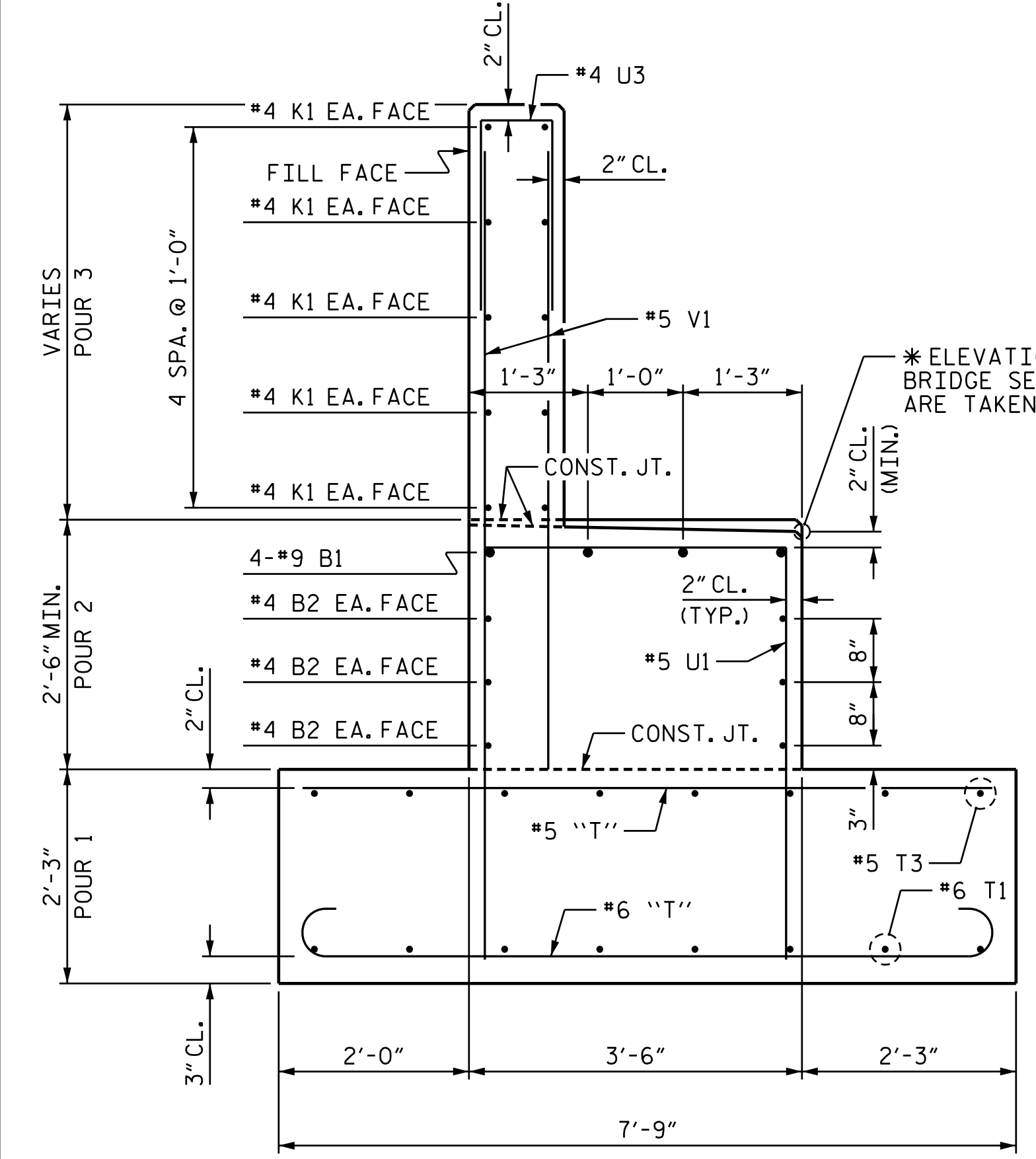


BAGGED STONE AND PIPE SHALL BE PLACED IMMEDIATELY AFTER COMPLETION OF END BENT EXCAVATION. PIPE MAY BE EITHER CONCRETE, CORRUGATED STEEL, CORRUGATED ALUMINUM ALLOY, OR CORRUGATED PLASTIC. PERFORATED PIPE WILL NOT BE ALLOWED.

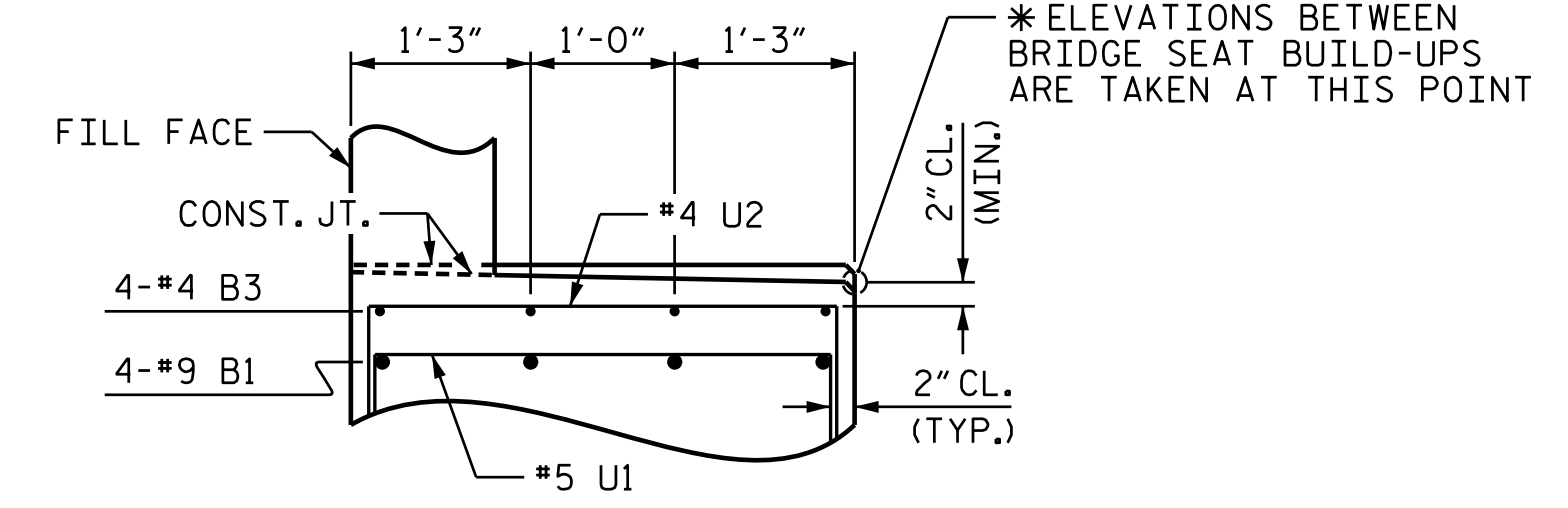
BAGGED STONE SHALL REMAIN IN PLACE UNTIL THE ENGINEER DIRECTS THAT IT BE REMOVED. THE CONTRACTOR SHALL REMOVE AND DISPOSE OF SILT ACCUMULATIONS AT BAGGED STONE WHEN SO DIRECTED BY THE ENGINEER. BAGS SHALL BE REMOVED AND REPLACED WHENEVER THE ENGINEER DETERMINES THAT THEY HAVE DETERIORATED AND LOST THEIR EFFECTIVENESS.

NO SEPARATE PAYMENT WILL BE MADE FOR THIS WORK AND THE ENTIRE COST OF THIS WORK SHALL BE INCLUDED IN THE UNIT CONTRACT PRICE BID FOR THE SEVERAL PAY ITEMS.

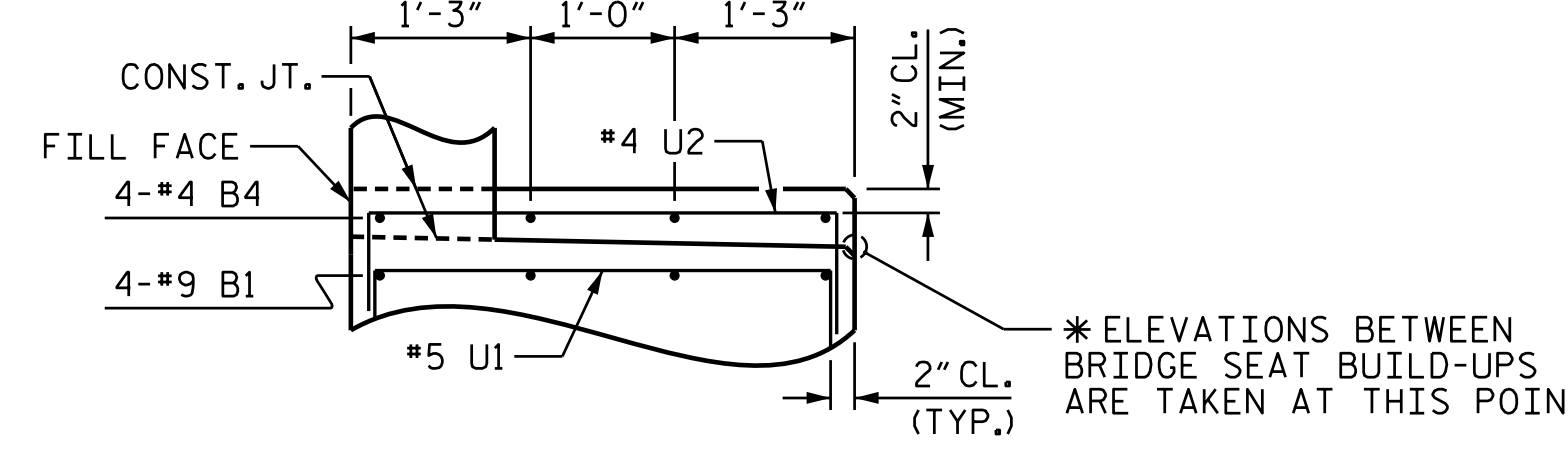
TEMPORARY DRAINAGE AT END BENT



SECTION A-A



SECTION B-B

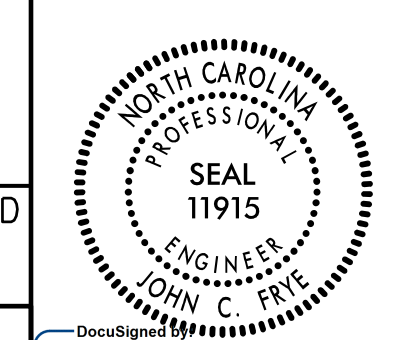


SECTION C-C

PROJECT NO. U-2525C
 GUILFORD COUNTY
 STATION: 22+29.98 -Y5-

SHEET 3 OF 3

STATE OF NORTH CAROLINA
 DEPARTMENT OF TRANSPORTATION
 RALEIGH
 SUBSTRUCTURE
 END BENT 2



DOCUMENT NOT CONSIDERED FINAL UNLESS ALL SIGNATURES COMPLETED

PLANS PREPARED BY:
 MOTT MACDONALD
 PO Box 700
 Fuquay-Varina, NC 27526
 (919) 552-2253
 www.mottmac.com
 LICENSE NO. F-0669

REVISIONS					
NO.	BY:	DATE:	NO.	BY:	DATE:
1			3		
2			4		

SHEET NO. S7-25
 TOTAL SHEETS 28

11/27/17
 12/21/2017 3:38:12 PM
 Y:\5-North-Church-St\Plans-U-2525C-SMU.E2-401246.dgn
 12/21/2017 3:38:12 PM

DRAWN BY: R. H. BRAINARD DATE: 11-2017
 CHECKED BY: J. E. MONDOLFI DATE: 11-2017
 DESIGN ENGINEER OF RECORD: J. E. MONDOLFI DATE: 12-2017