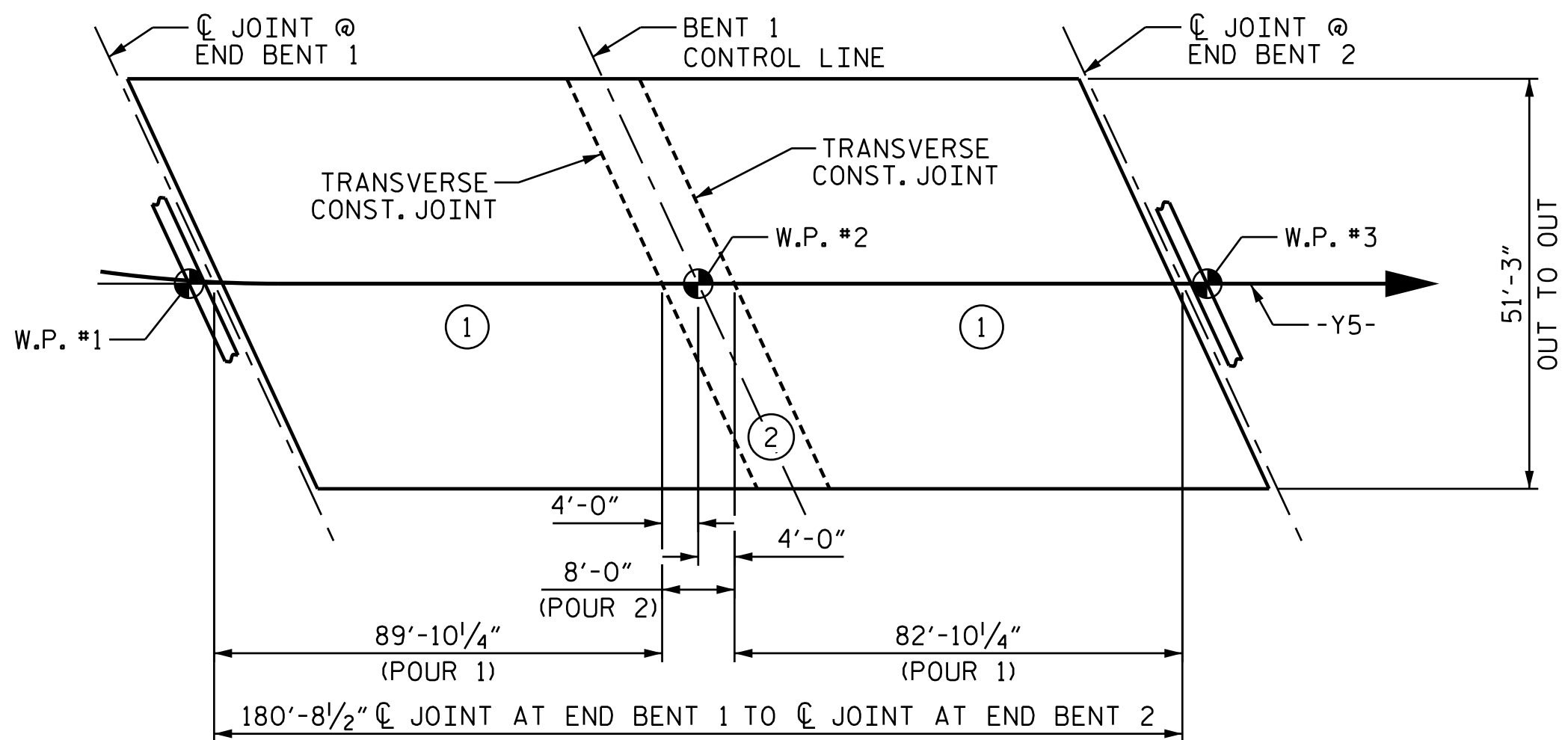


POURING SEQUENCE AND LAYOUT FOR COMPUTING AREA OF REINFORCED CONCRETE DECK SLAB

(CONTINUOUS FOR LIVE LOAD) (9261 SF)

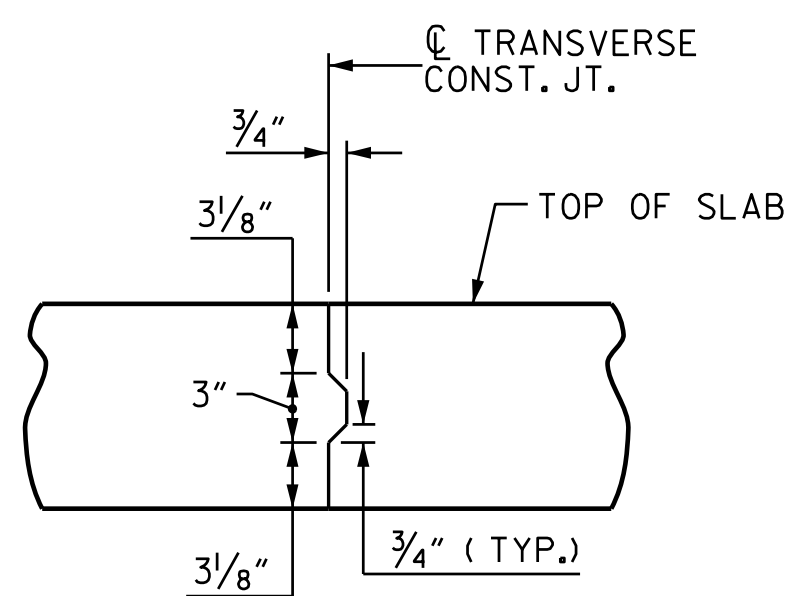
⊕ = INDICATES POUR NUMBER AND DIRECTION OF POUR



OPTIONAL POURING SEQUENCE

(CONTINUOUS FOR LIVE LOAD)

NOTE: POUR 2 CAN NOT BE STARTED UNTIL BOTH ADJACENT 1 POURS REACH A MINIMUM OF 3000 PSI.



TRANSVERSE CONSTRUCTION JOINT DETAIL

NOTE: REINFORCING STEEL IN SLAB NOT SHOWN. LONGITUDINAL REINFORCING STEEL SHALL BE CONTINUOUS THRU JOINT

BILL OF MATERIAL

BAR	NO.	SIZE	TYPE	LENGTH	WEIGHT	BAR	NO.	SIZE	TYPE	LENGTH	WEIGHT
* A1	342	#5	STR	50'-11"	18162	A213	6	#5	STR	12'-8"	79
A2	342	#5	STR	50'-11"	18162	A214	6	#5	STR	9'-8"	60
						A215	6	#5	STR	6'-9"	42
* A101	6	#5	STR	48'-3"	302	A216	6	#5	STR	3'-9"	23
* A102	6	#5	STR	45'-3"	283						
* A103	6	#5	STR	42'-3"	264	* B1	105	#4	STR	22'-1"	1549
* A104	6	#5	STR	39'-4"	246	* B2	70	#7	STR	35'-2"	5032
* A105	6	#5	STR	36'-4"	227	* B3	34	#7	STR	28'-0"	1946
* A106	6	#5	STR	33'-5"	209	* B4	70	#4	STR	29'-7"	1383
* A107	6	#5	STR	30'-5"	190	B5	280	#5	STR	46'-9"	13653
* A108	6	#5	STR	27'-6"	172						
* A109	6	#5	STR	24'-6"	153	* G1	2	#5	STR	56'-1"	117
* A110	6	#5	STR	21'-6"	135						
* A111	6	#5	STR	18'-7"	116	* K1	8	#8	1	14'-8"	313
* A112	6	#5	STR	15'-7"	98	* K2	12	#8	2	23'-6"	753
* A113	6	#5	STR	12'-8"	79	* K3	24	#6	STR	9'-11"	357
* A114	6	#5	STR	9'-8"	60	K4	8	#4	STR	8'-5"	45
* A115	6	#5	STR	6'-9"	42	K5	24	#4	STR	10'-3"	164
* A116	6	#5	STR	3'-9"	23	K6	8	#4	STR	9'-11"	53
						K7	10	#4	6	7'-4"	49
A201	6	#5	STR	48'-3"	302	K8	15	#4	7	14'-4"	144
A202	6	#5	STR	45'-3"	283						
A203	6	#5	STR	42'-3"	264	* S1	80	#5	3	6'-0"	501
A204	6	#5	STR	39'-4"	246	* S2	80	#4	4	4'-0"	214
A205	6	#5	STR	36'-4"	227	S3	152	#4	5	2'-11"	296
A206	6	#5	STR	33'-5"	209						
A207	6	#5	STR	30'-5"	190	U1	8	#4	2	13'-6"	72
A208	6	#5	STR	27'-6"	172	U2	32	#4	2	15'-6"	331
A209	6	#5	STR	24'-6"	153						
A210	6	#5	STR	21'-6"	135	REINFORCING STEEL				LBS.	35,568
A211	6	#5	STR	18'-7"	116	* EPOXY COATED REINFORCING STEEL				LBS.	32,926
A212	6	#5	STR	15'-7"	98						

SUPERSTRUCTURE BILL OF MATERIAL

	CLASS AA CONCRETE	REINFORCING STEEL	EPOXY COATED REINFORCING STEEL
	(CU. YDS.)	(LBS.)	(LBS.)
SPANS	A & B	35,568	32,926
POUR 1	152.8		
POUR 2	183.8		
TOTALS**	336.6	35,568	32,926

**QUANTITIES FOR BARRIER RAIL ARE NOT INCLUDED

SUPERSTRUCTURE REINFORCING STEEL LENGTHS ARE BASED ON THE FOLLOWING MINIMUM SPLICE LENGTHS

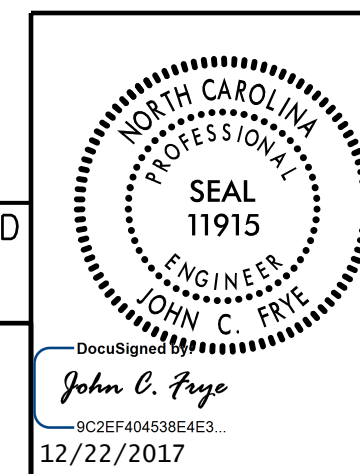
BAR SIZE	SUPERSTRUCTURE EXCEPT APPROACH SLABS, PARAPET, AND BARRIER RAIL		APPROACH SLABS		PARAPET AND BARRIER RAIL
	EPOXY COATED	UNCOATED	EPOXY COATED	UNCOATED	
#4	2'-0"	1'-9"	2'-0"	1'-9"	2'-9"
#5	2'-6"	2'-2"	2'-6"	2'-2"	3'-5"
#6	3'-0"	2'-7"	3'-10"	2'-7"	4'-4"
#7	5'-3"	3'-6"			
#8	6'-10"	4'-7"			

GROOVING BRIDGE FLOORS

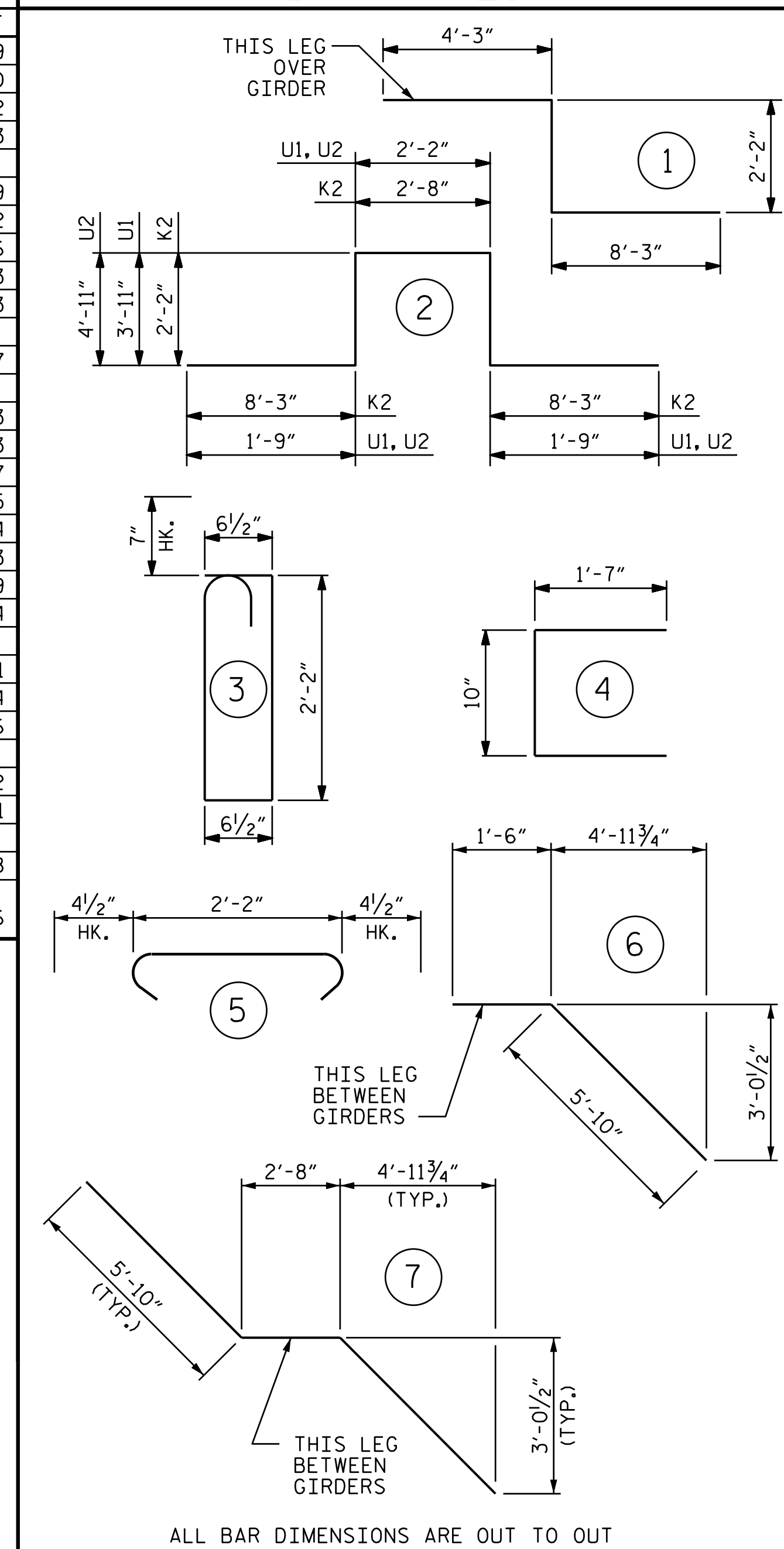
APPROACH SLABS	2,214 SQ.FT.
BRIDGE DECK	8,289 SQ.FT.
TOTAL	10,503 SQ.FT.

DOCUMENT NOT CONSIDERED FINAL UNLESS ALL SIGNATURES COMPLETED

PLANS PREPARED BY:
M MOTT MACDONALD
 PO Box 700
 Fuquay-Varina, NC 27526
 (919) 552-2253
 www.mottmac.com
 LICENSE NO. F-0669



BAR TYPES



PROJECT NO. U-2525C
GUILFORD COUNTY
 STATION: 22+29.98 -Y5-

STATE OF NORTH CAROLINA DEPARTMENT OF TRANSPORTATION RALEIGH					
SUPERSTRUCTURE BILL OF MATERIAL					
REVISIONS					
NO.	BY:	DATE:	NO.	BY:	DATE:
1			3		
2			4		

SHEET NO.	
57-17	TOTAL SHEETS 28