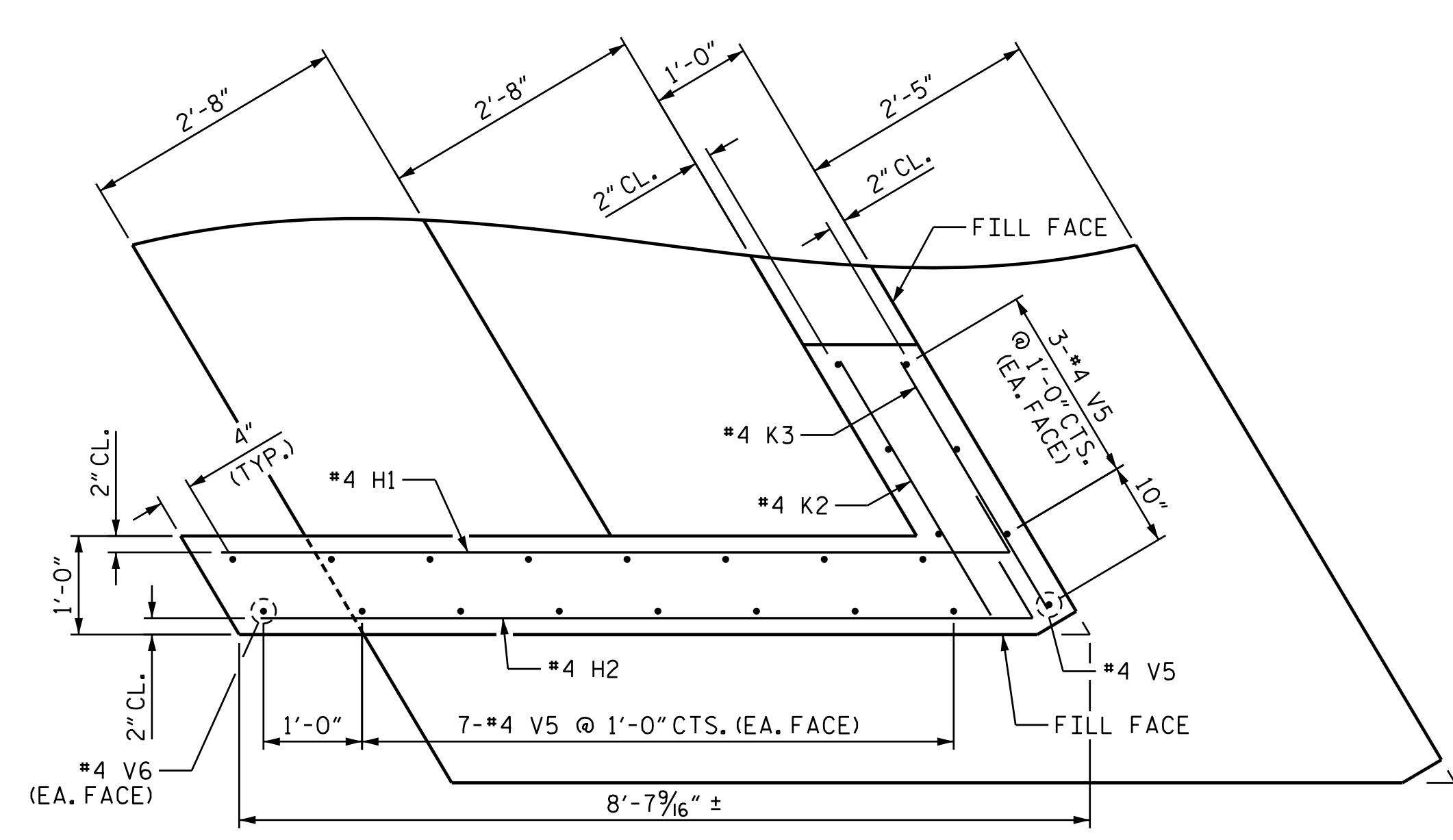
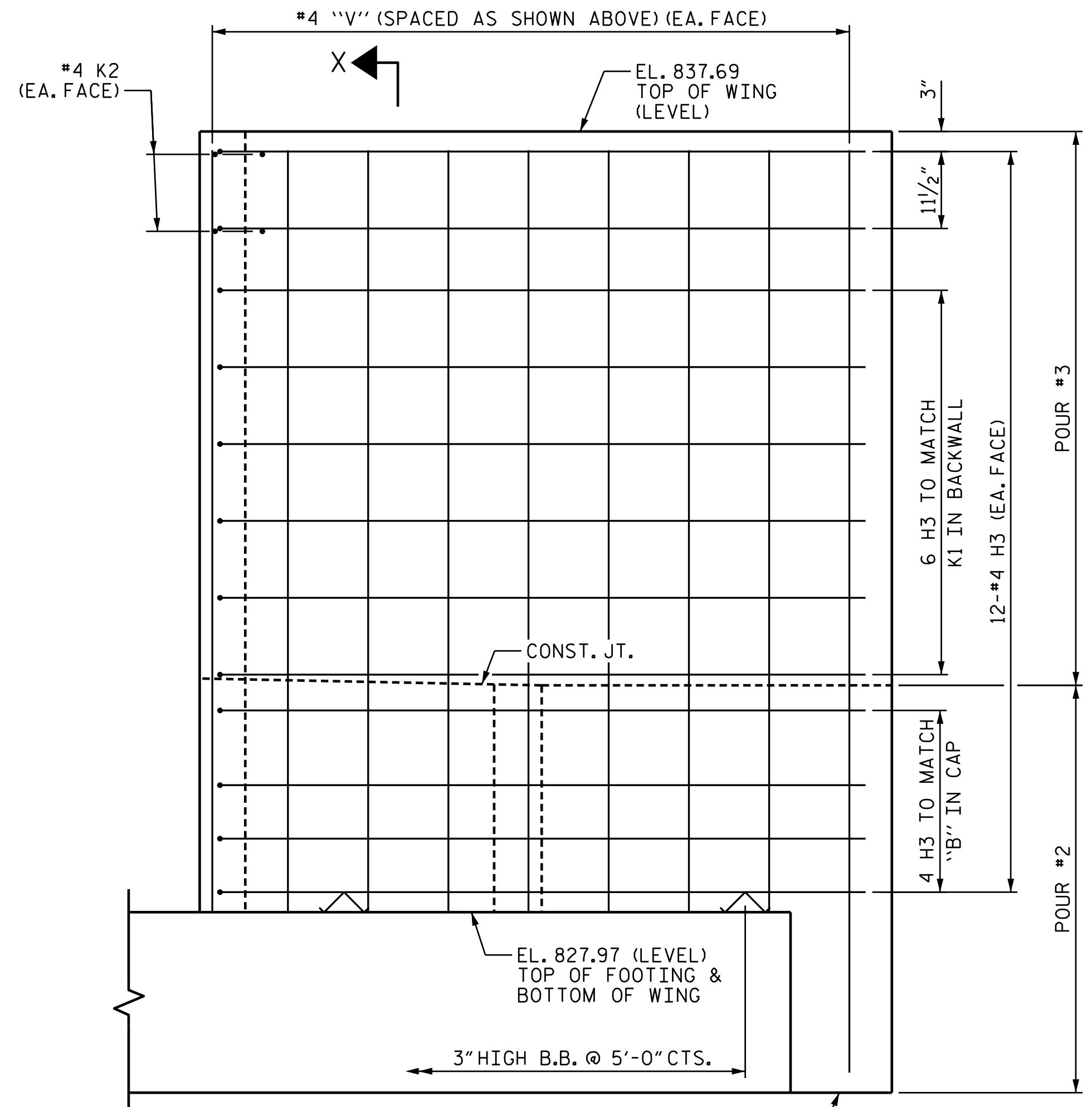


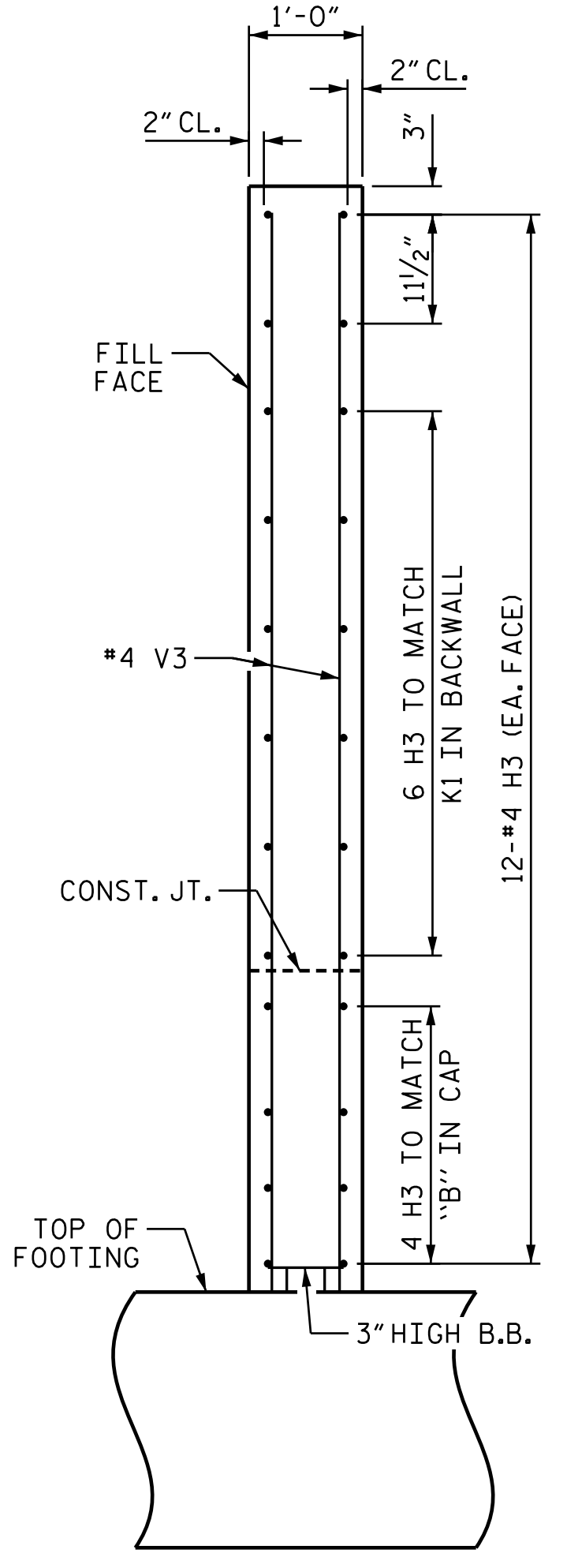
PLAN WING 3



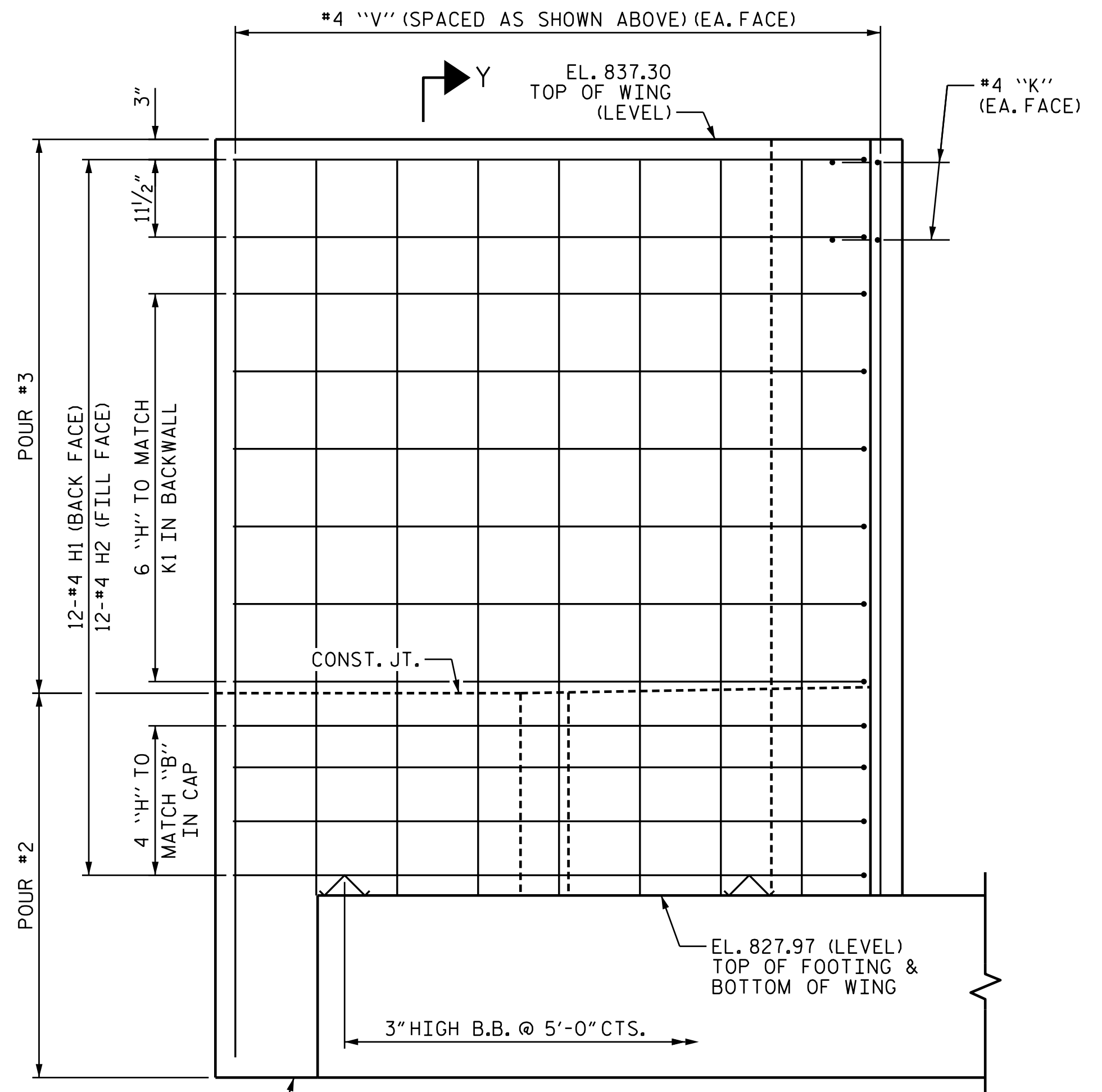
PLAN WING 4



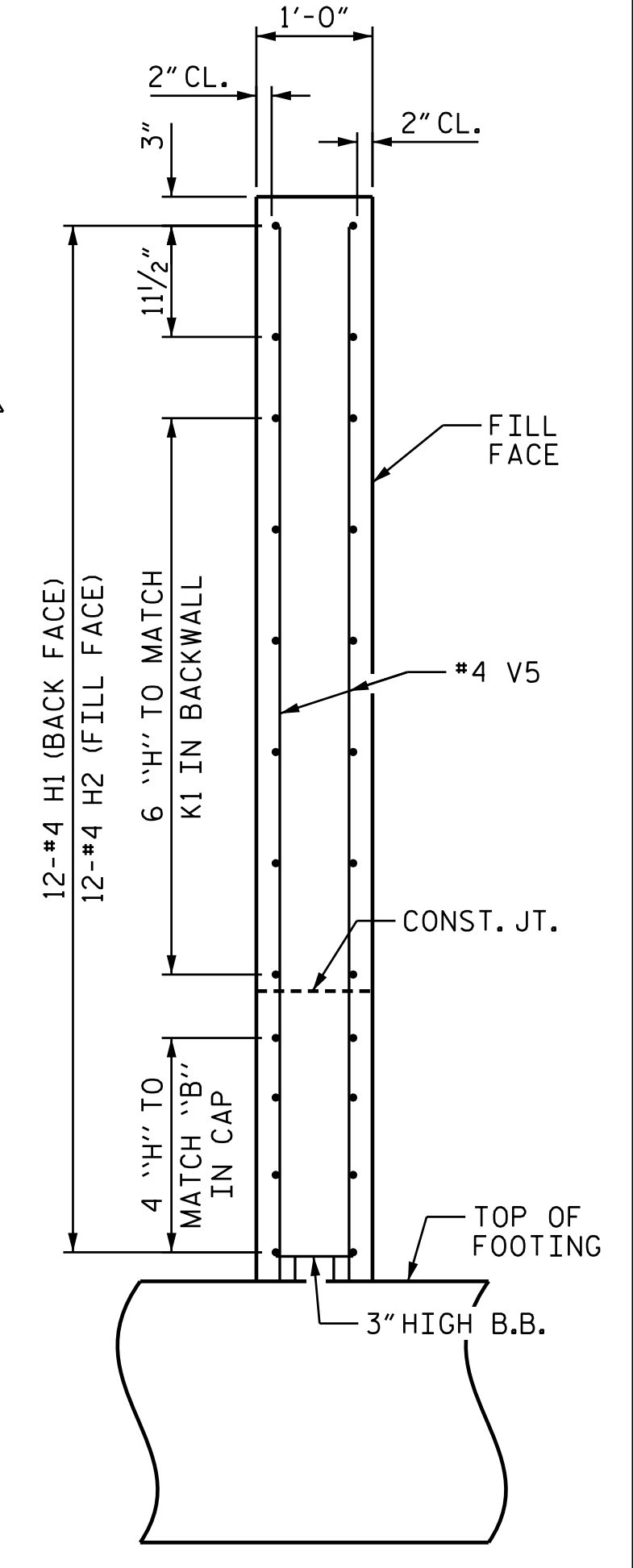
ELEVATION WING 3



SECTION X-X



ELEVATION WING 4



SECTION Y-Y

PROJECT NO. U-2525C
GUILFORD COUNTY
 STATION: 28+98.81 -Y4-

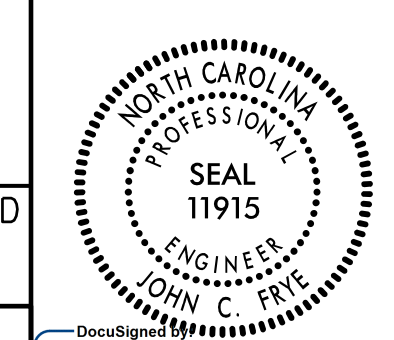
SHEET 3 OF 4

STATE OF NORTH CAROLINA
 DEPARTMENT OF TRANSPORTATION
 RALEIGH
 SUBSTRUCTURE
 END BENT 2

REVISIONS						SHEET NO.
NO.	BY:	DATE:	NO.	BY:	DATE:	S6-30
1			3			TOTAL SHEETS
2			4			34

DOCUMENT NOT CONSIDERED FINAL UNLESS ALL SIGNATURES COMPLETED

PLANS PREPARED BY:
 MOTT MACDONALD
 PO Box 700
 Fuquay-Varina, NC 27526
 (919) 552-2253
 www.mottmac.com
 LICENSE NO. F-0669



John C. Frye
 12/22/2017

157077
 12/21/2017 3:38:02 PM
 Y:\Projects\4_Yares\11e_Rd\Plans\U-2525C.SMU.E2-401245.dgn

DRAWN BY: L. T. FORBIS DATE: 6-2017
 CHECKED BY: J. T. WILLIAMS DATE: 9-2017
 DESIGN ENGINEER OF RECORD: J. E. MONDOLFI DATE: 9-2017