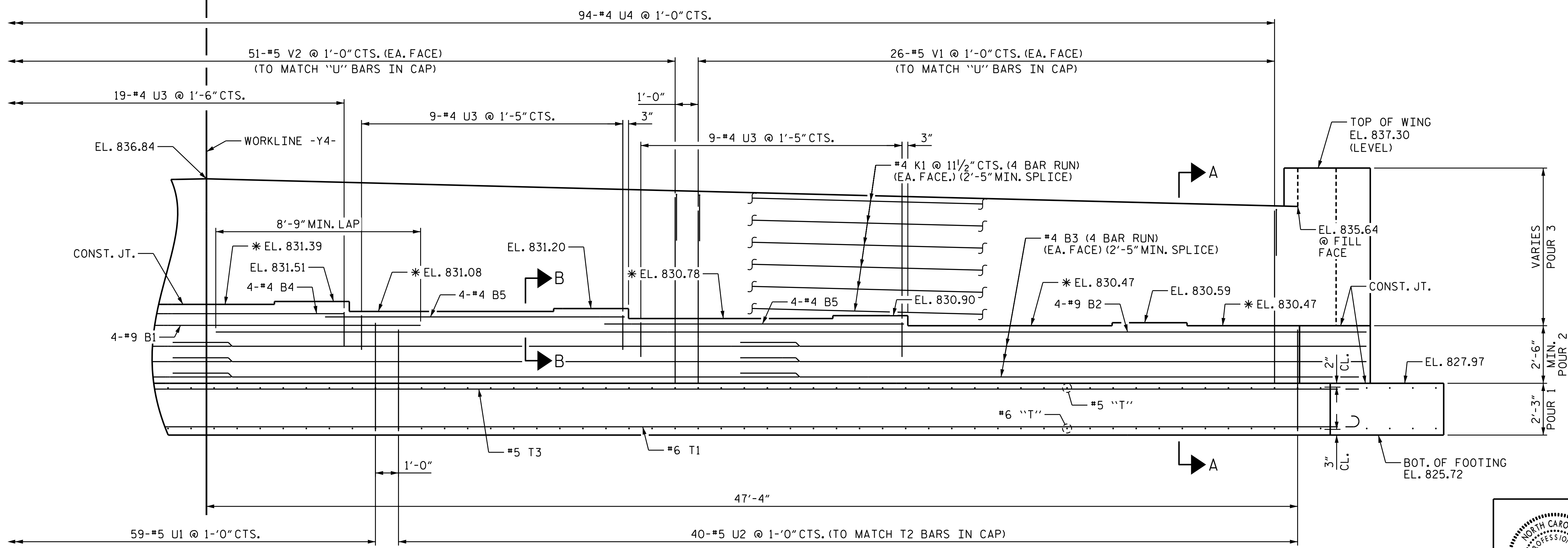


PLAN



ELEVATION

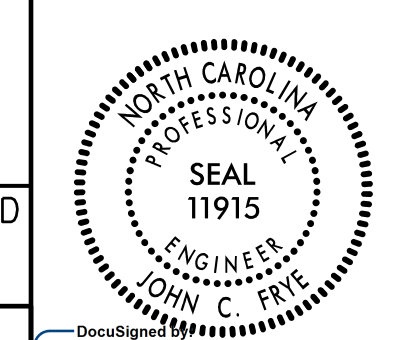
WING NOT SHOWN FOR CLARITY

* FOR LOCATION ON CAP SEE SHEET 4 OF 4

PROJECT NO. U-2525C
 GUILFORD COUNTY
 STATION: 28+98.81 -Y4-

SHEET 2 OF 4

STATE OF NORTH CAROLINA
 DEPARTMENT OF TRANSPORTATION
 RALEIGH
 SUBSTRUCTURE
 END BENT 2



DOCUMENT NOT CONSIDERED FINAL UNLESS ALL SIGNATURES COMPLETED

PLANS PREPARED BY:
 MOTT MACDONALD
 PO Box 700
 Fuquay-Varina, NC 27526
 (919) 552-2253
 www.mottmac.com
 LICENSE NO. F-0669

John C. Frie
 PROFESSIONAL ENGINEER
 12/22/2017

REVISIONS						SHEET NO.
NO.	BY:	DATE:	NO.	BY:	DATE:	S6-29
1			3			TOTAL SHEETS
2			4			34

157077
 12/21/2017 3:35:54 PM
 Y:\Projects\14_Yaresy\14_Rd\Plans\U-2525C_SMU_E2_401245.dgn

DRAWN BY: L. T. FORBIS DATE: 6-2017
 CHECKED BY: J. T. WILLIAMS DATE: 9-2017
 DESIGN ENGINEER OF RECORD: J. E. MONDOLFI DATE: 9-2017