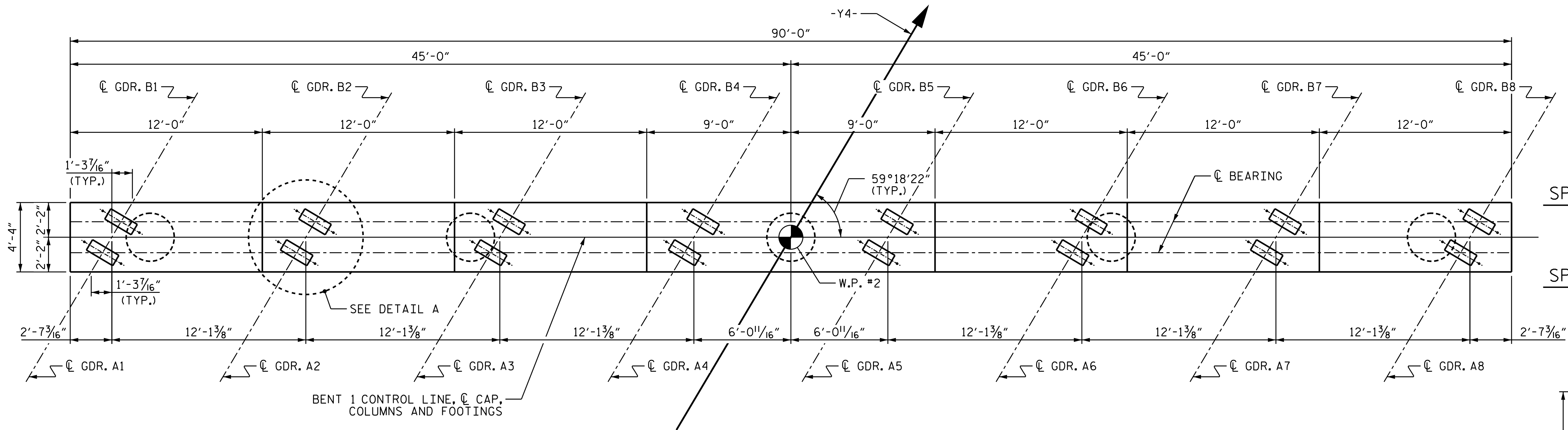
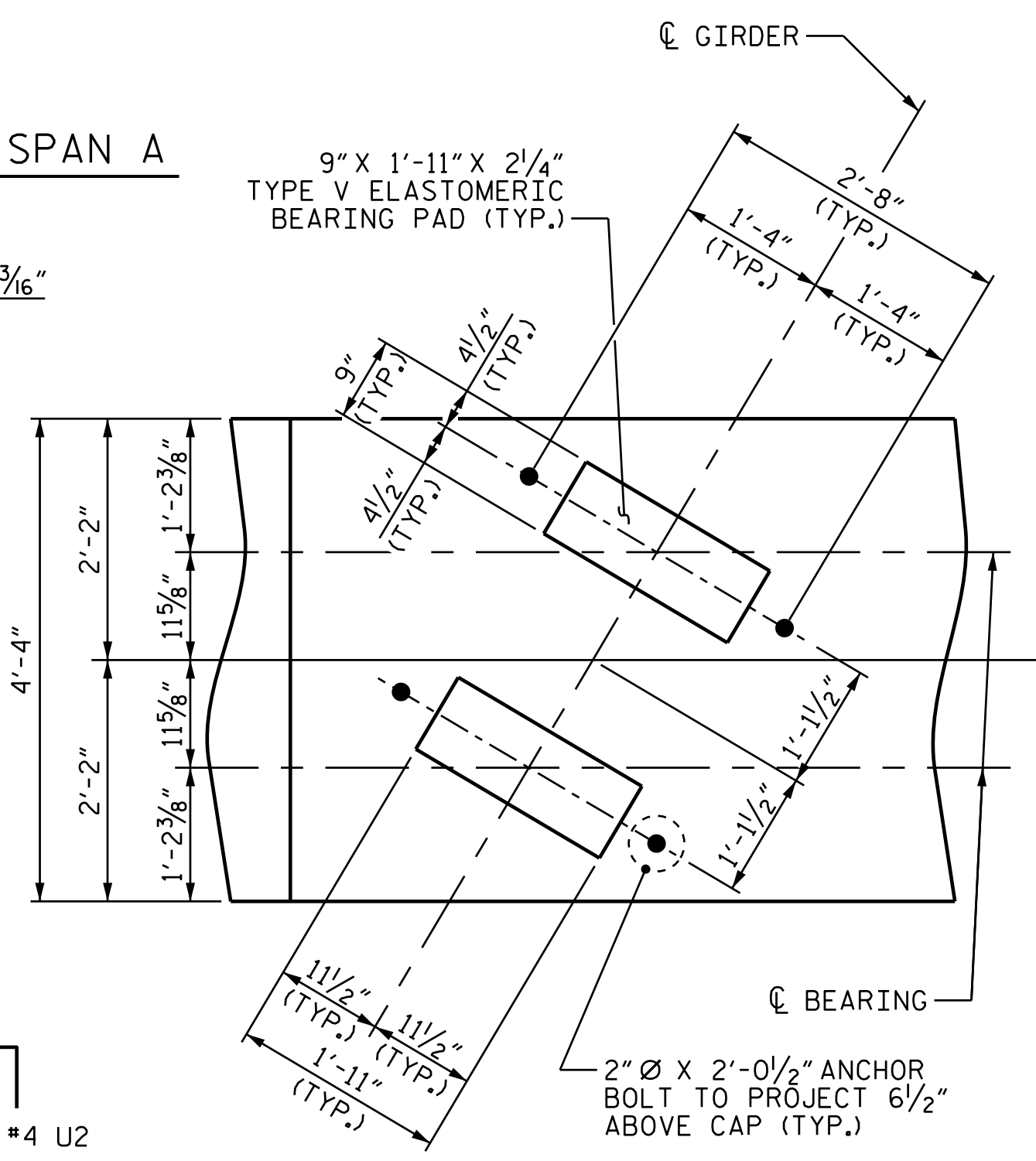


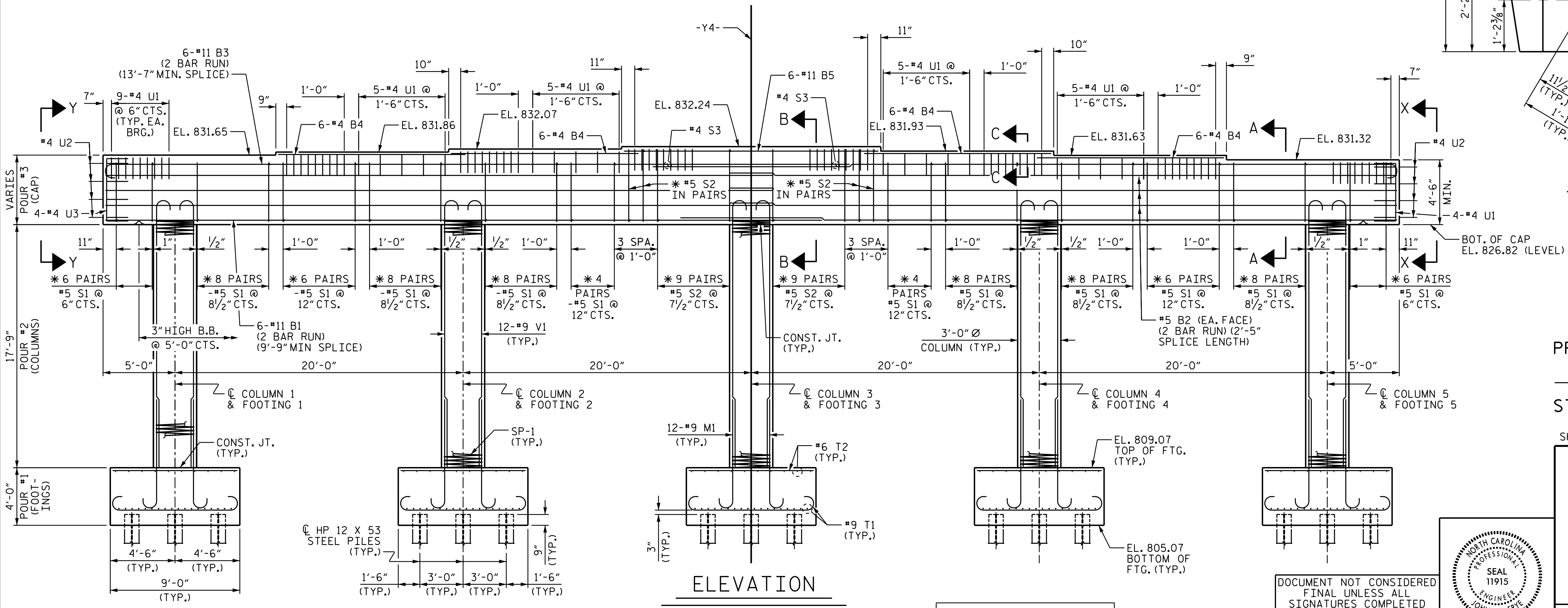
NOTES:
 STIRRUPS IN CAP MAY BE SHIFTED AS NECESSARY TO CLEAR ANCHOR BOLTS.
 HOOKS ON "V" BARS MAY BE TURNED AS NECESSARY FOR PLACING REINFORCED STEEL.



PLAN



DETAIL A



ELEVATION

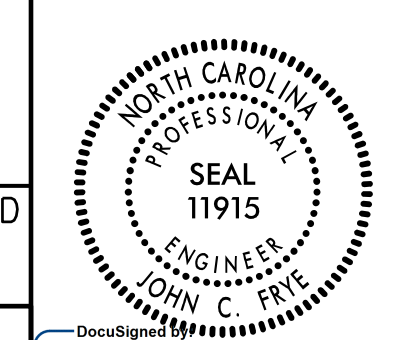
REINFORCING STEEL, DIMENSIONS AND DETAILS ARE TYPICAL FOR EACH COLUMN AND FOOTING UNLESS OTHERWISE NOTED.

* INVERT ALTERNATE PAIRS

PROJECT NO. U-2525C
GUILFORD COUNTY
 STATION: 28+98.81 -Y4-

SHEET 1 OF 2

STATE OF NORTH CAROLINA
 DEPARTMENT OF TRANSPORTATION
 RALEIGH
 SUBSTRUCTURE
BENT 1



DOCUMENT NOT CONSIDERED FINAL UNLESS ALL SIGNATURES COMPLETED

PLANS PREPARED BY:
M MOTT MACDONALD
 PO Box 700
 Fuquay-Varina, NC 27526
 (919) 552-2253
 www.mottmac.com
 LICENSE NO. F-0669

REVISIONS						SHEET NO.
NO.	BY:	DATE:	NO.	BY:	DATE:	S6-26
1			3			TOTAL SHEETS
2			4			34

157077
 12/21/2017 11:21:30 AM
 Y:\Projects\14_Yorgensville_Rd\PI\msU-2525C.SMU.B1_401245.dgn
 3:35:40 PM

DRAWN BY: L. T. FORBIS DATE: 6-2017
 CHECKED BY: J. T. WILLIAMS DATE: 9-2017
 DESIGN ENGINEER OF RECORD: J. E. MONDOLFI DATE: 10-2017