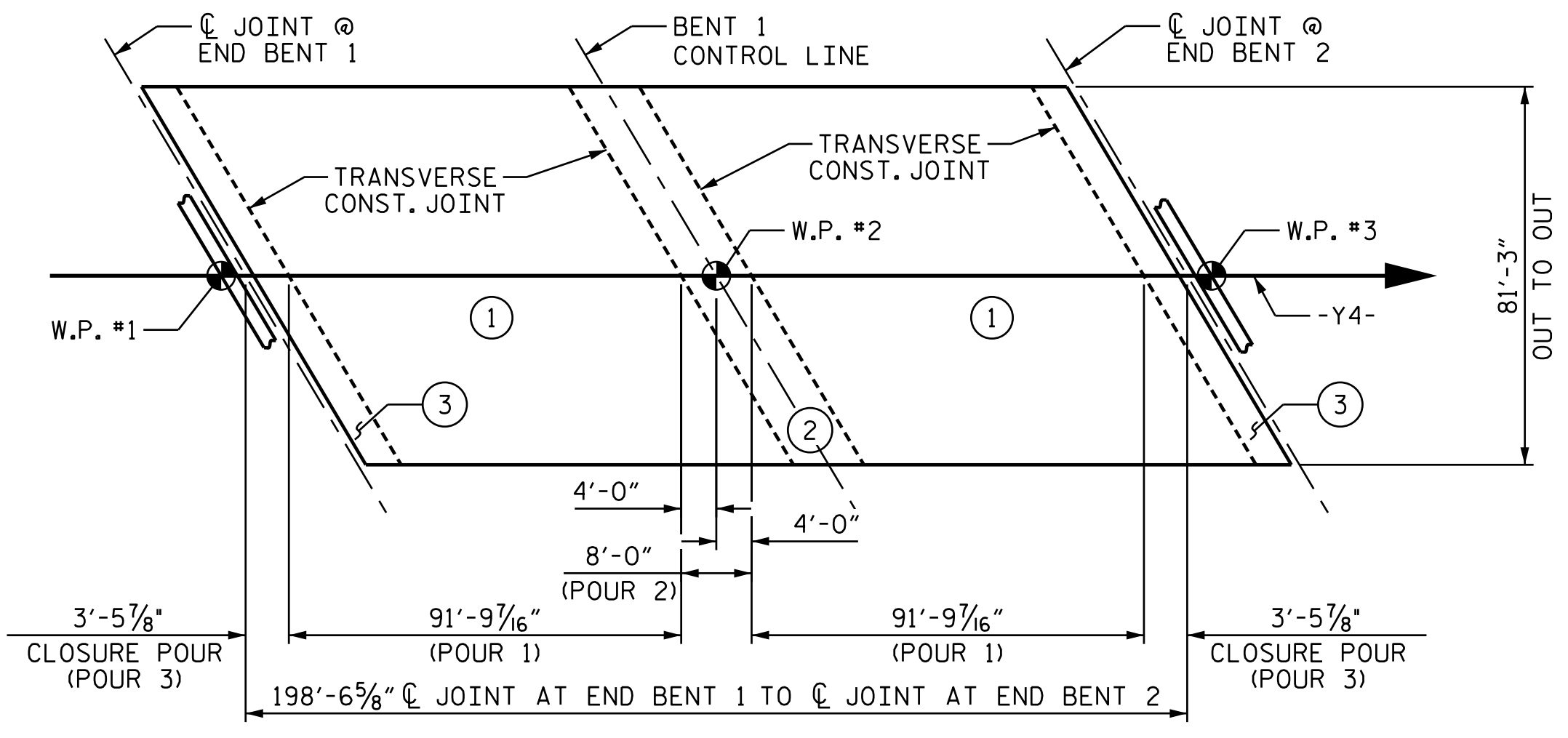


### POURING SEQUENCE AND LAYOUT FOR COMPUTING AREA OF REINFORCED CONCRETE DECK SLAB

( CONTINUOUS FOR LIVE LOAD ) (16,132 SF)

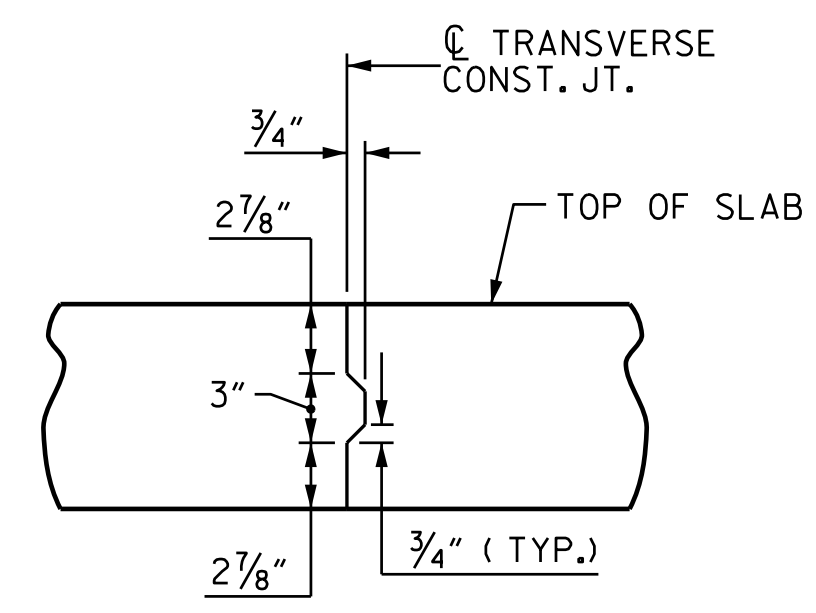
⊕ = INDICATES POUR NUMBER AND DIRECTION OF POUR



### OPTIONAL POURING SEQUENCE

( CONTINUOUS FOR LIVE LOAD )

NOTE: POUR 2 CAN NOT BE STARTED UNTIL BOTH ADJACENT 1 POURS REACH A MINIMUM OF 3000 PSI.



### TRANSVERSE CONSTRUCTION JOINT DETAIL

NOTE: REINFORCING STEEL IN SLAB NOT SHOWN. LONGITUDINAL REINFORCING STEEL SHALL BE CONTINUOUS THRU JOINT

### SUPERSTRUCTURE REINFORCING STEEL LENGTHS ARE BASED ON THE FOLLOWING MINIMUM SPLICE LENGTHS

BAR SIZE	SUPERSTRUCTURE EXCEPT APPROACH SLABS, PARAPET, AND BARRIER RAIL		APPROACH SLABS		PARAPET AND BARRIER RAIL
	EPOXY COATED	UNCOATED	EPOXY COATED	UNCOATED	
#4	2'-0"	1'-9"	2'-0"	1'-9"	2'-9"
#5	2'-6"	2'-2"	2'-6"	2'-2"	3'-5"
#6	3'-0"	2'-7"	3'-10"	2'-7"	4'-4"
#7	5'-3"	3'-6"			
#8	6'-10"	4'-7"			

DRAWN BY: L. T. FORBIS DATE: 7-2017  
 CHECKED BY: J. T. WILLIAMS DATE: 9-2017  
 DESIGN ENGINEER OF RECORD: J. E. MONDOLFI DATE: 9-2017

### BILL OF MATERIAL

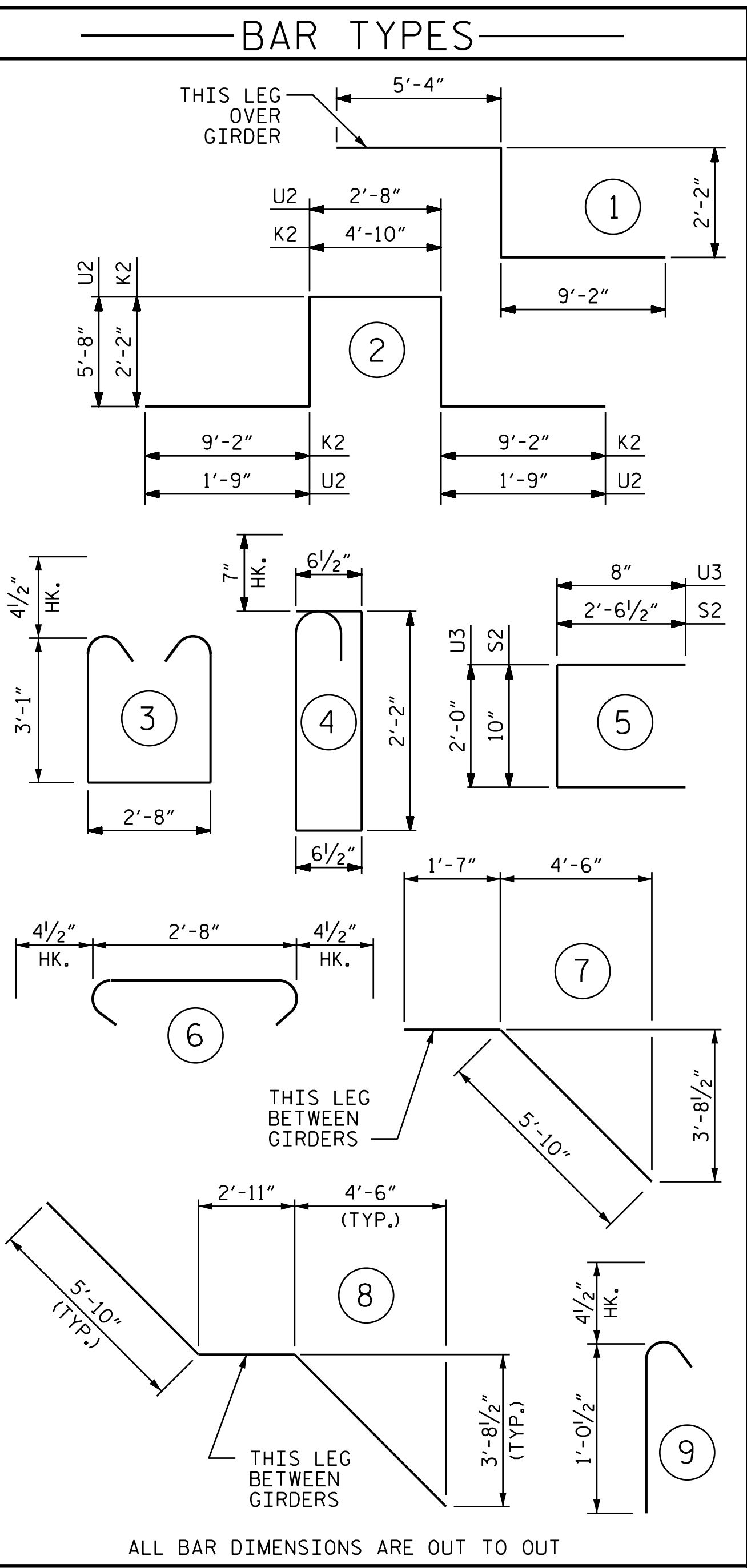
BAR	NO.	SIZE	TYPE	LENGTH	WEIGHT	BAR	NO.	SIZE	TYPE	LENGTH	WEIGHT
*A1	514	#5	STR	41'-9"	22382	A213	6	#5	STR	43'-1"	270
A2	514	#5	STR	41'-7"	22293	A214	6	#5	STR	40'-2"	251
						A215	6	#5	STR	37'-3"	233
*A3	8	#6	STR	6'-11"	83	A216	6	#5	STR	34'-3"	214
*A101	12	#5	STR	40'-7"	508	A217	6	#5	STR	31'-4"	196
*A102	12	#5	STR	39'-1"	489	A218	6	#5	STR	28'-5"	178
*A103	12	#5	STR	37'-7"	470	A219	6	#5	STR	25'-5"	159
*A104	12	#5	STR	36'-2"	453	A220	6	#5	STR	22'-6"	141
*A105	12	#5	STR	34'-8"	434	A221	6	#5	STR	19'-6"	122
*A106	12	#5	STR	33'-2"	415	A222	6	#5	STR	16'-7"	104
*A107	12	#5	STR	31'-9"	397	A223	6	#5	STR	13'-8"	86
*A108	6	#5	STR	57'-10"	362	A224	6	#5	STR	10'-8"	67
*A109	6	#5	STR	54'-11"	344	A225	6	#5	STR	7'-9"	48
*A110	6	#5	STR	52'-0"	325	A226	6	#5	STR	4'-10"	30
*A111	6	#5	STR	49'-0"	307	A227	6	#5	STR	1'-10"	11
*A112	6	#5	STR	46'-1"	288						
*A113	6	#5	STR	43'-1"	270	*B1	330	#4	STR	23'-5"	5162
*A114	6	#5	STR	40'-2"	251	*B2	110	#7	STR	37'-8"	8469
*A115	6	#5	STR	37'-3"	233	*B3	54	#7	STR	30'-0"	3311
*A116	6	#5	STR	34'-3"	214	B4	276	#5	STR	51'-2"	14729
*A117	6	#5	STR	31'-4"	196						
*A118	6	#5	STR	28'-5"	178	*G1	4	#5	STR	48'-4"	202
*A119	6	#5	STR	25'-5"	159						
*A120	6	#5	STR	22'-6"	141	*J1	184	#4	9	1'-5"	174
*A121	6	#5	STR	19'-6"	122						
*A122	6	#5	STR	16'-7"	104	*K1	8	#8	1	16'-8"	356
*A123	6	#5	STR	13'-8"	86	*K2	24	#8	2	27'-6"	1762
*A124	6	#5	STR	10'-8"	67	*K3	42	#6	STR	7'-6"	473
*A125	6	#5	STR	7'-9"	48	K4	14	#4	STR	7'-10"	73
*A126	6	#5	STR	4'-10"	30	K5	56	#4	STR	11'-0"	411
*A127	6	#5	STR	1'-10"	11	K6	14	#4	STR	7'-6"	70
						K7	12	#4	7	7'-5"	59
						K8	36	#4	8	14'-7"	351
A201	12	#5	STR	40'-5"	506						
A202	12	#5	STR	38'-11"	487	*S1	98	#5	4	6'-0"	613
A203	12	#5	STR	37'-5"	468	*S2	98	#4	5	5'-11"	387
A204	12	#5	STR	36'-0"	451	S3	266	#4	6	3'-5"	607
A205	12	#5	STR	34'-6"	432						
A206	12	#5	STR	33'-0"	413						
A207	12	#5	STR	31'-7"	395	U1	28	#4	3	9'-7"	179
A208	6	#5	STR	57'-10"	362	U2	42	#4	2	17'-6"	491
A209	6	#5	STR	54'-11"	344						
A210	6	#5	STR	52'-0"	325	REINFORCING STEEL		LBS.	49,664		
A211	6	#5	STR	49'-0"	307	* EPOXY COATED REINFORCING STEEL		LBS.	46,763		
A212	6	#5	STR	46'-1"	288						

#### GROOVING BRIDGE FLOORS

APPROACH SLABS	3,331 SQ.FT.
BRIDGE DECK	13,905 SQ.FT.
TOTAL	17,236 SQ.FT.

#### SIDEWALK QUANTITY

BAR	NO.	SIZE	TYPE	LENGTH	WEIGHT
*B5	35	#4	STR	29'-11"	699
*B6	10	#4	STR	24'-2"	161
*G2	257	#4	STR	5'-0"	858
*U3	74	#4	5	3'-4"	165
		* EPOXY COATED REINFORCING STEEL		LBS.	1,883



### — SUPERSTRUCTURE BILL OF MATERIAL —

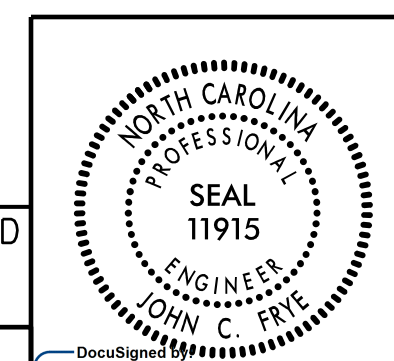
	CLASS AA CONCRETE ( CU. YDS. )	REINFORCING STEEL ( LBS. )	EPOXY COATED REINFORCING STEEL ( LBS. )
SPANS A & B		49,664	46,763
POUR 1	239.6		
POUR 2	318.1		
POUR 3	32.6		
SIDEWALK	31.7		1,883
TOTALS**	622.0	49,664	48,646

\*\*QUANTITIES FOR BARRIER RAIL ARE NOT INCLUDED

DOCUMENT NOT CONSIDERED FINAL UNLESS ALL SIGNATURES COMPLETED

PLANS PREPARED BY: MOTT MACDONALD

PO Box 700 Fuquay-Varina, NC 27526 (919) 552-2253 www.mottmac.com LICENSE NO. F-0669



PROJECT NO. U-2525C  
 GUILFORD COUNTY  
 STATION: 28+98.81 -Y4-

STATE OF NORTH CAROLINA DEPARTMENT OF TRANSPORTATION RALEIGH					
SUPERSTRUCTURE BILL OF MATERIAL					
REVISIONS					
NO.	BY:	DATE:	NO.	BY:	DATE:
1			3		
2			4		

SHEET NO. S6-21  
TOTAL SHEETS 34