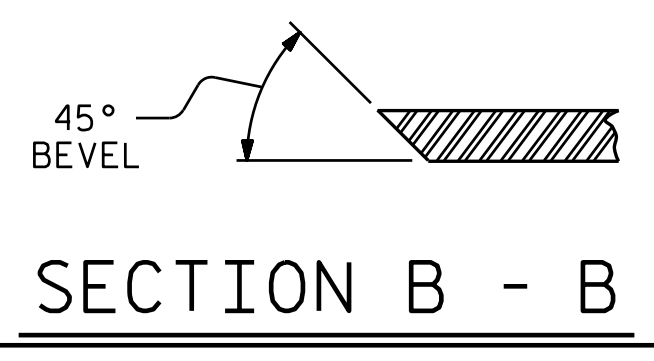
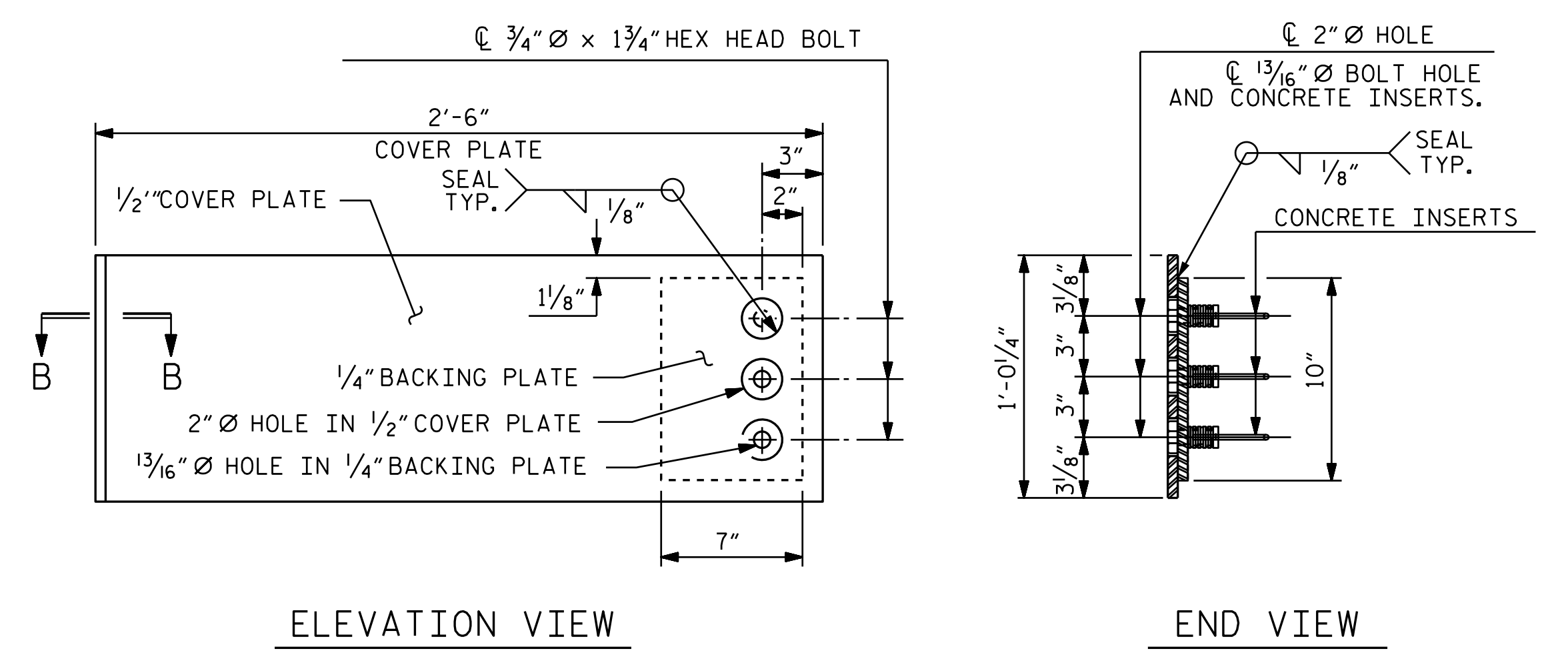


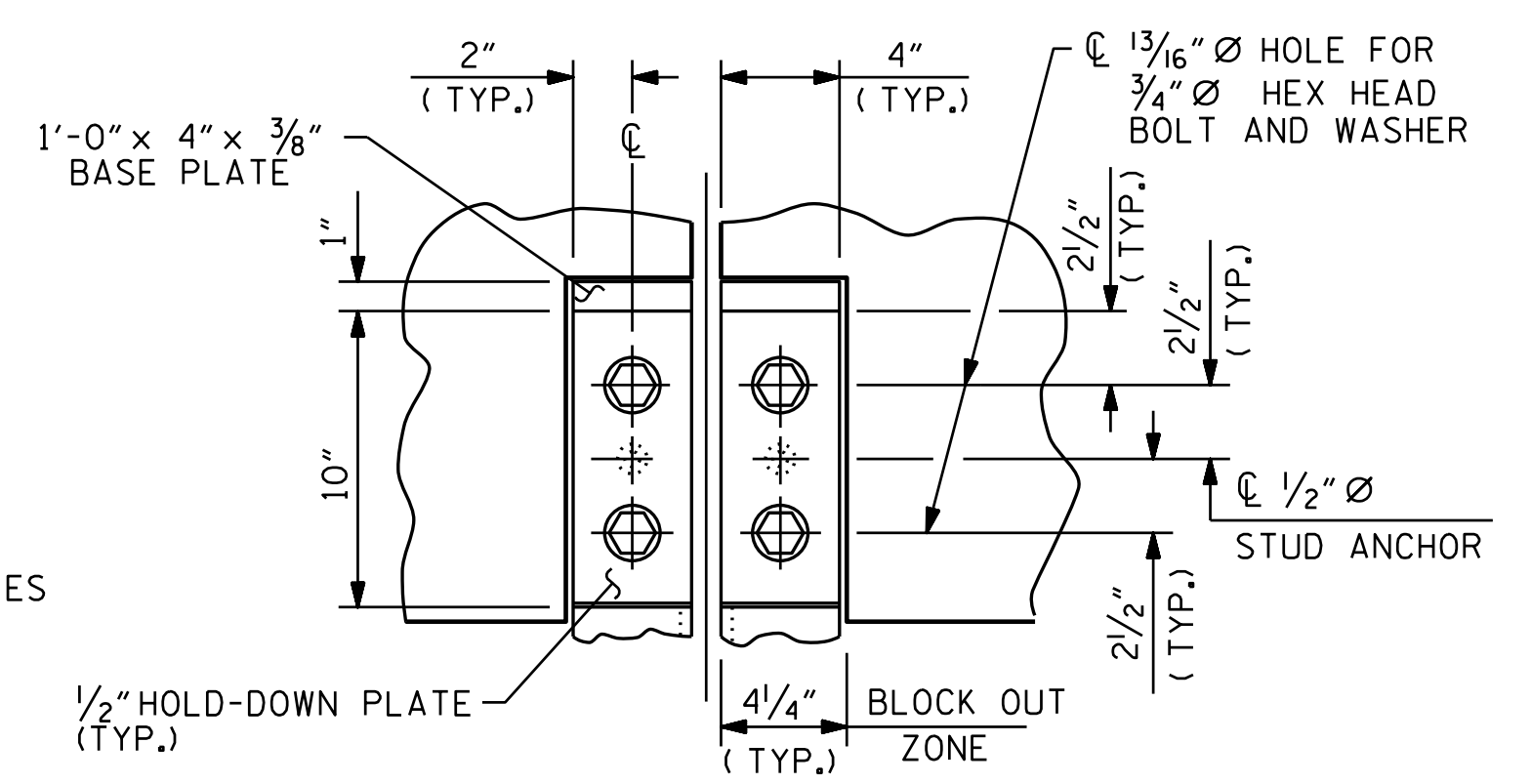
SECTION THRU RAIL NORMAL TO JOINT



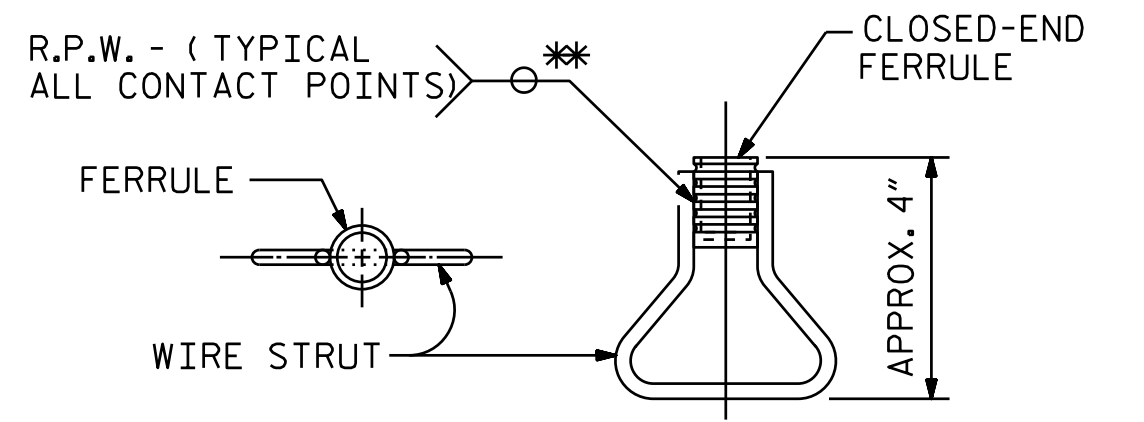
SECTION B - B



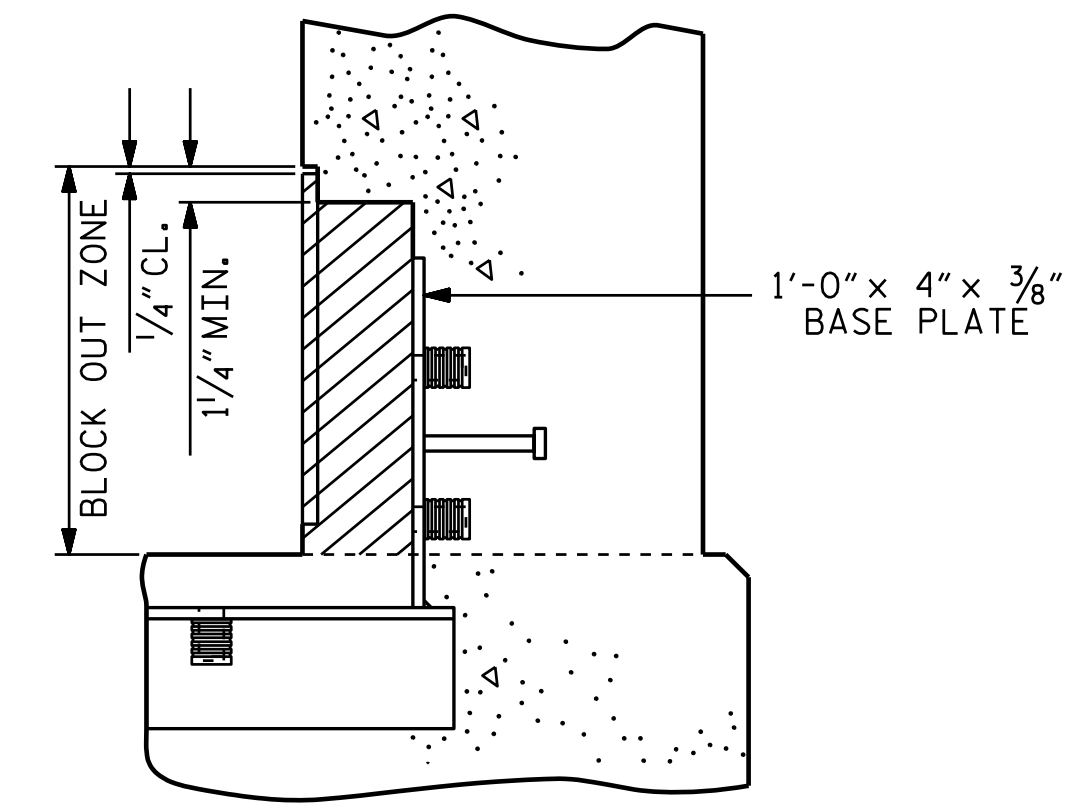
COVER PLATE DETAILS



SECTION A - A

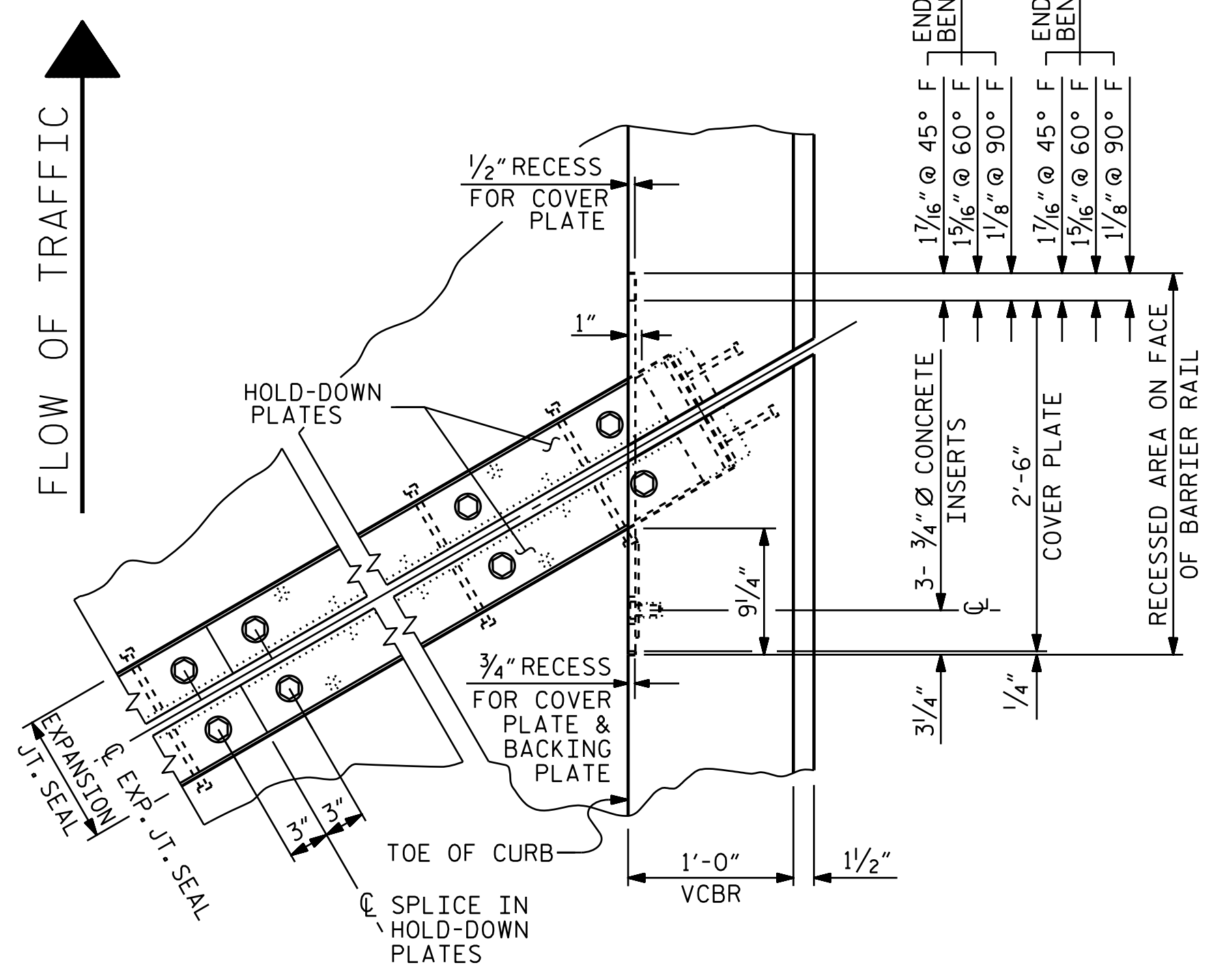


CONCRETE INSERT



BLOCK OUT DETAIL

SEE "SECTION A - A" FOR OTHER DETAILS.



PLAN OF EXPANSION JOINT DETAIL - RIGHT SIDE

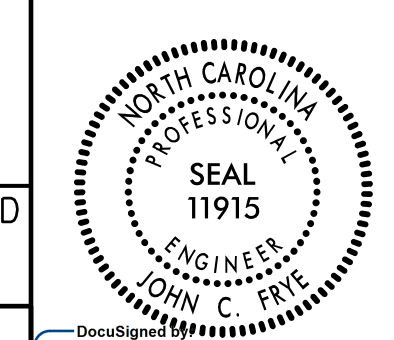
SEE "EXPANSION JOINT DETAILS FOR SIDEWALK" FOR LEFT SIDE

PROJECT NO. U-2525C
 GUILFORD COUNTY
 STATION: 28+98.81 -Y4-

SHEET 2 OF 4

STATE OF NORTH CAROLINA
 DEPARTMENT OF TRANSPORTATION
 RALEIGH

EXPANSION JOINT
 SEAL DETAILS
 FOR VERTICAL
 CONCRETE BARRIER
 RAIL (VCBR)



DOCUMENT NOT CONSIDERED
 FINAL UNLESS ALL
 SIGNATURES COMPLETED

PLANS PREPARED BY:
 MOTT MACDONALD
 PO Box 700
 Fuquay-Varina, NC 27526
 (919) 552-2253
 www.mottmac.com
 LICENSE NO. F-0669

REVISIONS						SHEET NO.
NO.	BY:	DATE:	NO.	BY:	DATE:	S6-16
1			3			TOTAL SHEETS
2			4			34

157077
 12/21/2017 12:21:20 PM
 C:\Users\j4_yang\My Documents\Projects\U-2525C\SMU-JS_401245.dgn

DRAWN BY: L. T. FORBIS DATE: 7-2017
 CHECKED BY: J. T. WILLIAMS DATE: 10-2017
 DESIGN ENGINEER OF RECORD: J. E. MONDOLFI DATE: 10-2017