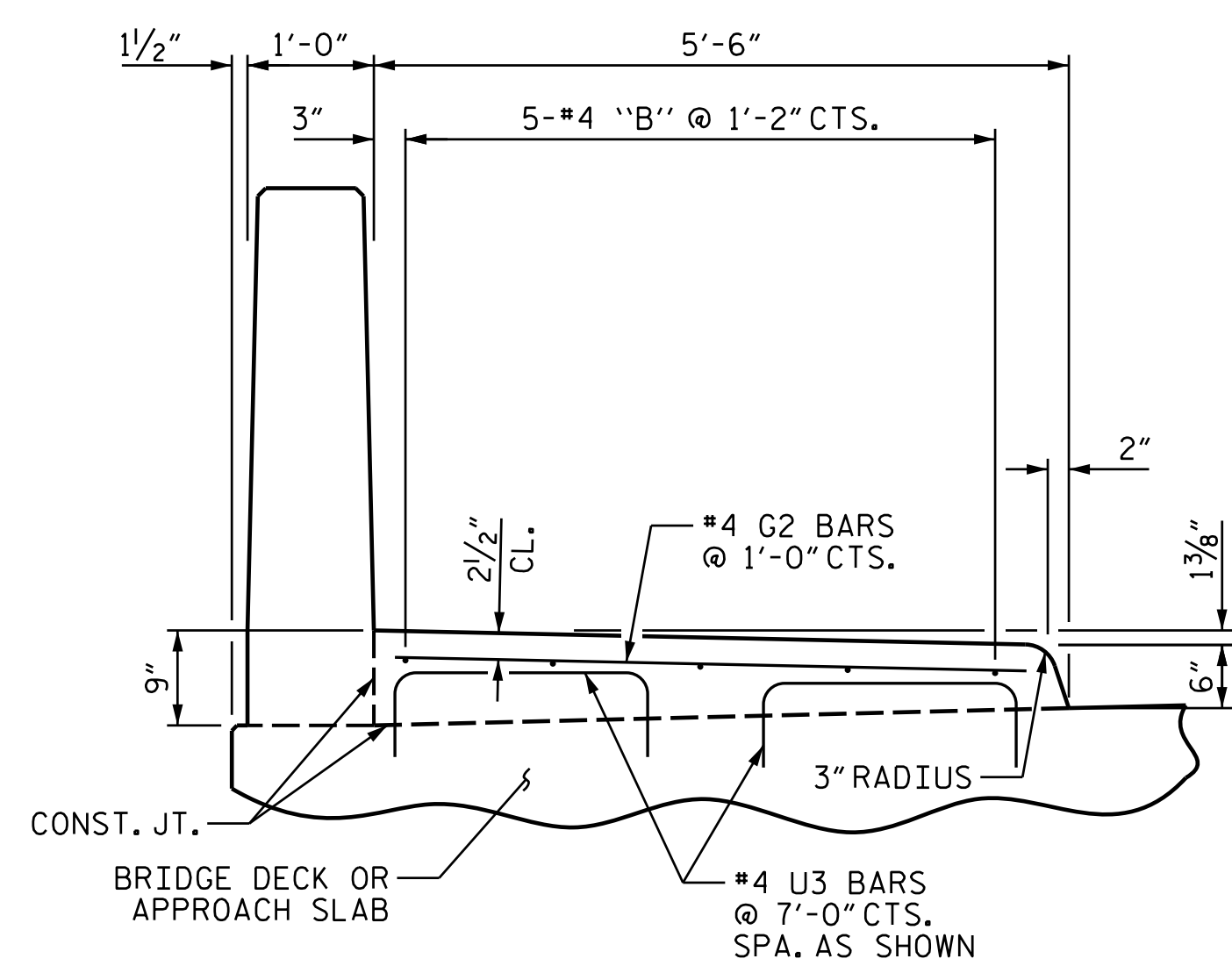


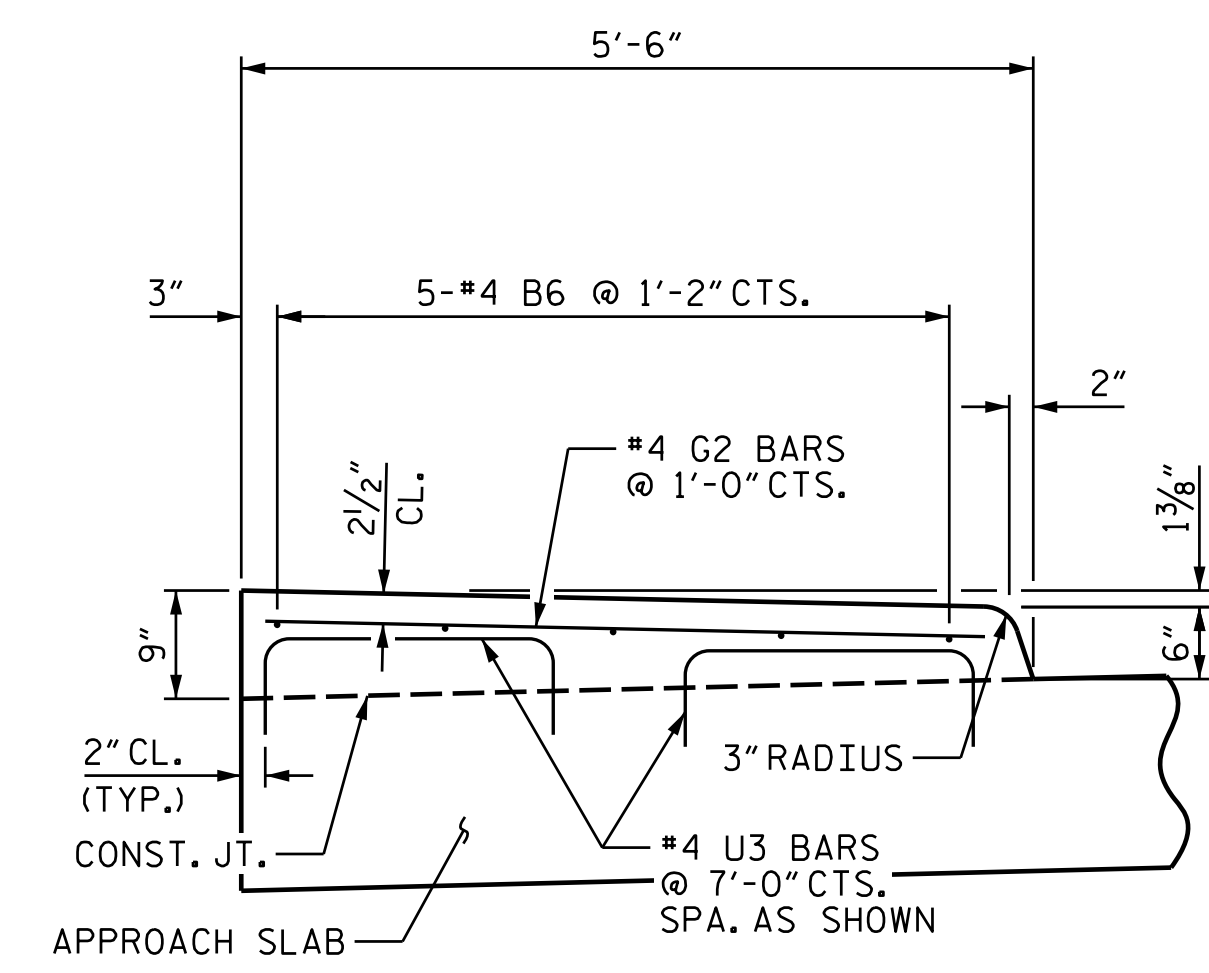
PLAN OF SIDEWALK

NOTES:

- GROOVED CONTRACTION JOINTS, 1/2" IN DEPTH, SHALL BE TOOLED IN ALL EXPOSED FACES OF SIDEWALK IN ACCORDANCE WITH ARTICLE 825-10(B) OF THE STANDARD SPECIFICATIONS. THE CONTRACTION JOINTS SHALL BE LOCATED AT A SPACING OF 8 FEET TO 10 FEET BETWEEN EXPANSION JOINTS. NO CONTRACTION JOINTS WILL BE REQUIRED FOR SEGMENTS LESS THAN 10 FEET IN LENGTH.
- THE SIDEWALK IN THE CONTINUOUS UNIT SHALL NOT BE CAST UNTIL ALL SLAB CONCRETE IN THE UNIT HAS BEEN CAST AND HAS REACHED MINIMUM COMPRESSIVE STRENGTH OF 3000 PSI.
- ALL REINFORCING STEEL FOR THE SIDEWALK SHALL BE EPOXY COATED.
- PAYMENT FOR SIDEWALK SHALL BE INCLUDED IN PAY ITEM FOR "REINFORCED CONCRETE DECK SLAB".
- FOR SIDEWALK QUANTITIES, SEE SUPERSTRUCTURE BILL OF MATERIAL SHEET.
- THE #4 U3 BARS MAY BE PUSHED INTO GREEN CONCRETE AFTER SPAN OR APPROACH SLAB HAS BEEN SCREEDED OFF.



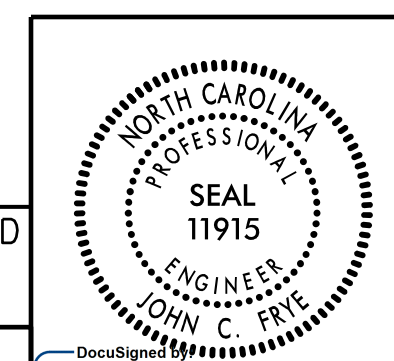
SECTION A-A



SECTION B-B

PROJECT NO. U-2525C
GUILFORD COUNTY
 STATION: 28+98.81 -Y4-

STATE OF NORTH CAROLINA
 DEPARTMENT OF TRANSPORTATION
 RALEIGH
 SUPERSTRUCTURE
 SIDEWALK DETAILS



DOCUMENT NOT CONSIDERED
 FINAL UNLESS ALL
 SIGNATURES COMPLETED

PLANS PREPARED BY:
M MOTT MACDONALD
 PO Box 700
 Fuquay-Varina, NC 27526
 (919) 552-2253
 www.mottmac.com
 LICENSE NO. F-0669

John C. Frye
 PROFESSIONAL ENGINEER
 12/22/2017

REVISIONS						SHEET NO.
NO.	BY:	DATE:	NO.	BY:	DATE:	S6-9
1			3			TOTAL SHEETS
2			4			34

157077
 C:\Users\jwilliams\OneDrive\Documents\U-2525C_SMU_Sw_401245.dgn
 12/21/2017 3:33:42 PM

DRAWN BY: J. T. WILLIAMS DATE: 10-2017
 CHECKED BY: J. C. FRYE DATE: 10-2017
 DESIGN ENGINEER OF RECORD: J. E. MONDOLFI DATE: 10-2017