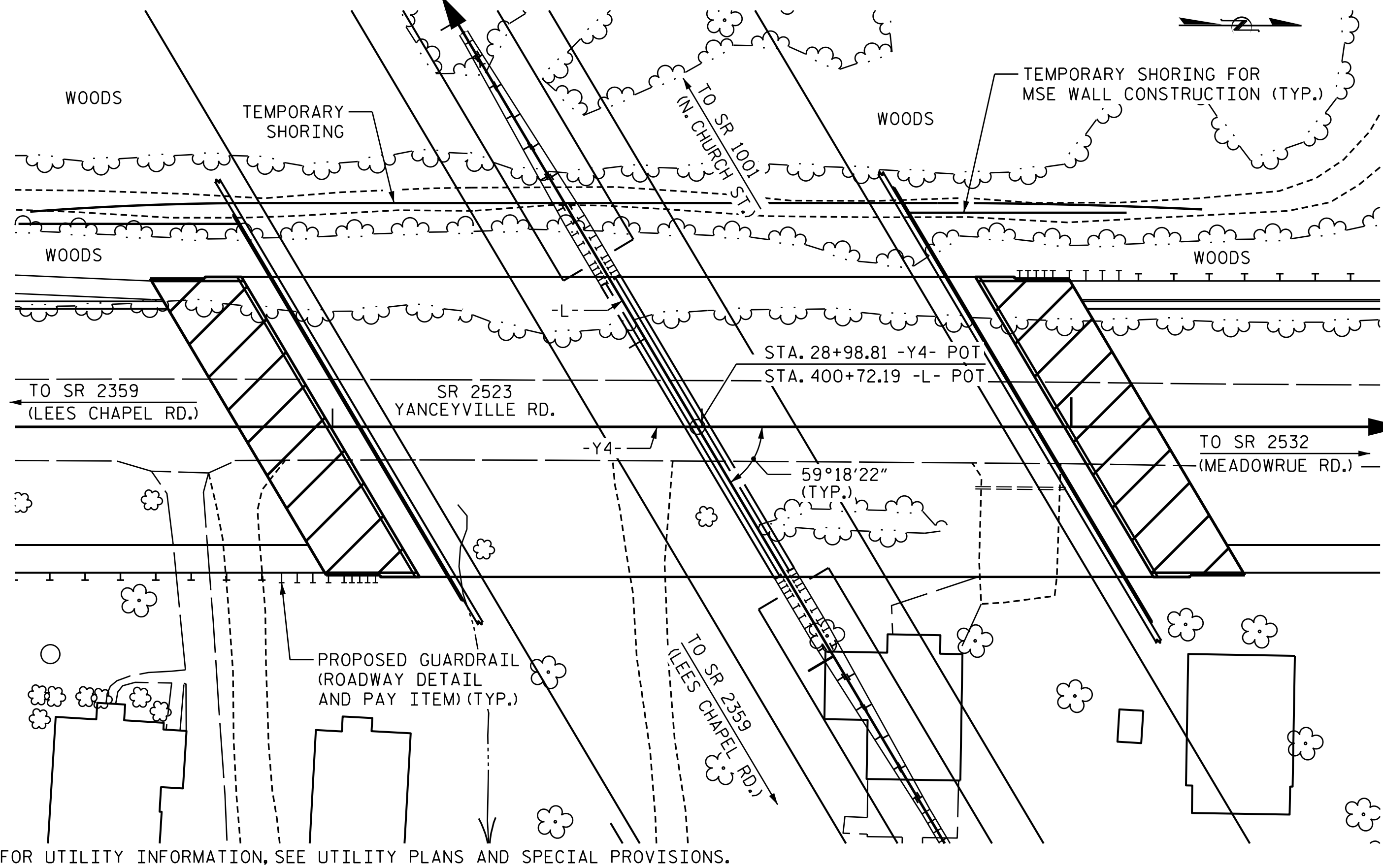


BM #7: RR SPIKE SET IN 24" POPLAR, -BY4- STA. 13+77.01, 319.49' RT., ELEV.= 853.04'



LOCATION SKETCH

FOR UTILITY INFORMATION, SEE UTILITY PLANS AND SPECIAL PROVISIONS.

NOTES:

- ASSUMED LIVE LOAD = HL-93 OR ALTERNATE LOADING.
- THIS BRIDGE HAS BEEN DESIGNED IN ACCORDANCE WITH THE REQUIREMENTS OF THE AASHTO LRFD BRIDGE DESIGN SPECIFICATIONS.
- THIS BRIDGE IS LOCATED IN SEISMIC ZONE 1.
- FOR OTHER DESIGN DATA AND GENERAL NOTES, SEE SHEET SN.
- FOR SUBMITTAL OF WORKING DRAWINGS, SEE SPECIAL PROVISIONS.
- FOR FALSEWORK AND FORMWORK, SEE SPECIAL PROVISIONS.
- FOR CRANE SAFETY, SEE SPECIAL PROVISIONS.
- FOR GROUT FOR STRUCTURES, SEE SPECIAL PROVISIONS.
- REMOVABLE FORMS MAY BE USED IN LIEU OF METAL STAY-IN-PLACE FORMS IN ACCORDANCE WITH ARTICLE 420-3 OF THE STANDARD SPECIFICATIONS.
- NEEDLE BEAMS WILL NOT BE ALLOWED UNLESS OTHERWISE CALLED FOR ON THE PLANS OR APPROVED BY THE ENGINEER.
- THE CLASS AA CONCRETE IN THE BRIDGE DECK SHALL CONTAIN FLY ASH OR GROUND GRANULATED BLAST FURNACE SLAG AT THE SUBSTITUTION RATE SPECIFIED IN ARTICLE 1024-1 AND IN ACCORDANCE WITH ARTICLES 1024-5 AND 1024-6 OF THE STANDARD SPECIFICATIONS. NO PAYMENT WILL BE MADE FOR THIS SUBSTITUTION AS IT IS CONSIDERED INCIDENTAL TO THE COST OF THE REINFORCED CONCRETE DECK SLAB.
- WORK SHALL NOT BE STARTED ON THIS BRIDGE UNTIL ROADWAY SECTION HAS BEEN EXCAVATED.
- FOR TEMPORARY SHORING FOR MSE WALL CONSTRUCTION, SEE SPECIAL PROVISIONS.
- FOR LIMITS OF TEMPORARY SHORING FOR MAINTENANCE OF TRAFFIC, SEE TRAFFIC CONTROL PLANS. FOR PAY ITEM FOR TEMPORARY SHORING FOR MAINTENANCE OF TRAFFIC, SEE ROADWAY PLANS.
- FOR EROSION CONTROL MEASURES, SEE EROSION CONTROL PLANS.

TEMPORARY SHORING NOTES:

- FOR TEMPORARY SHORING AND POSITIVE PROTECTION FOR TEMPORARY SHORING, SEE PLANS AND TEMPORARY SHORING PROVISION.
- BEFORE BEGINNING TEMPORARY SHORING DESIGN OR CONSTRUCTION, SURVEY EXISTING GROUND ELEVATIONS IN THE VICINITY OF SHORING LOCATIONS TO DETERMINE ACTUAL SHORING HEIGHTS.
- SEE STANDARD DETAIL NO. 1801.01 FOR STANDARD TEMPORARY SHORING AND 1801.02 FOR STANDARD TEMPORARY WALLS.
- WHEN BACKFILL FOR RETAINING WALLS OVERLAPS WITH THE REINFORCED ZONE OF TEMPORARY WALLS, USE SHORING BACKFILL OR BACKFILL MATERIAL REQUIRED FOR RETAINING WALLS, WHICHEVER IS BETTER, IN THE REINFORCED ZONE OF TEMPORARY WALLS.
- DESIGN TEMPORARY SHORING FOR THE ASSUMED SOIL PARAMETERS AND GROUNDWATER ELEVATION. INFORMATION PROVIDED FOR TEMPORARY SHORING DESIGN MAY NOT BE APPLICABLE TO THE ACTUAL SITE CONDITIONS ENCOUNTERED DURING CONSTRUCTION.
- THE ASSUMED SOIL PARAMETERS ARE
 - FROM STATION 27+15 -Y4-, 55.0 FT LT, TO STATION 27+75 -Y4-, 55.0 FT LT:
 - AT THE CONTRACTOR'S OPTION, USE STANDARD SHORING
 - UNIT WEIGHT (γ) = 120 LB/CF
 - FRICTION ANGLE (ϕ) = 32 DEGREES
 - COHESION (c) = 0 LB/SF
 - ASSUMED GROUNDWATER ELEVATION = 810 FT
 - FROM STATION 29+55 -Y4-, 60.0 FT LT, TO STATION 30+15 -Y4-, 60.0 FT LT:
 - AT THE CONTRACTOR'S OPTION, USE STANDARD SHORING
 - UNIT WEIGHT (γ) = 120 LB/CF
 - FRICTION ANGLE (ϕ) = 30 DEGREES
 - COHESION (c) = 0 LB/SF
 - ASSUMED GROUNDWATER ELEVATION = 811 FT

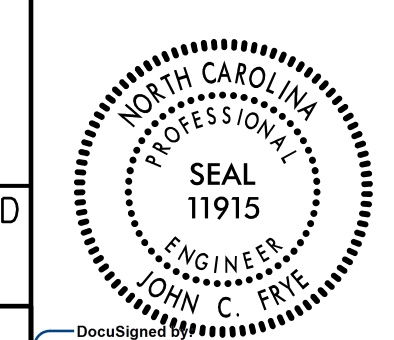
TOTAL BILL OF MATERIAL

	FOUNDATION EXCAVATION FOR BENT 1	REINFORCED CONCRETE DECK SLAB	GROOVING BRIDGE FLOORS	CLASS A CONCRETE	BRIDGE APPROACH SLABS	REINFORCING STEEL	SPIRAL COLUMN REINFORCING STEEL	MODIFIED 63" PRESTRESSED CONCRETE GIRDERS	PILE DRIVING EQUIPMENT SETUP FOR HP 12 X 53 STEEL PILES	HP 12 X 53 STEEL PILES	STEEL PILE POINTS	PREDRILLING FOR PILES	VERTICAL CONCRETE BARRIER RAIL	4" SLOPE PROTECTION	ELASTOMERIC BEARINGS	EXPANSION JOINT SEALS	TEMPORARY SHORING FOR MSE WALL CONSTRUCTION	
	LUMP SUM	SQ. FT.	SQ. FT.	CU. YDS.	LUMP SUM	LBS.	LBS.	NO. LIN. FT.	EA.	NO. LIN. FT.	NO.	LIN. FT.	LIN. FT.	SQ. YDS.	LUMP SUM	LUMP SUM	SQ. FT.	
SUPERSTRUCTURE		16,132	17,236		LUMP SUM			16 1,566.17					438.3		LUMP SUM	LUMP SUM		
END BENT NO.1				143.2		11,821								12				
BENT NO.1	LUMP SUM			155.8		25,041	2,067		45	45	900	45	90					
END BENT NO.2				143.1		11,814								12				
TOTAL	LUMP SUM	16,132	17,236	442.1	LUMP SUM	48,676	2,067	16 1,566.17	45	45	900	45	90	438.3	24	LUMP SUM	LUMP SUM	1,659

PROJECT NO. U-2525C
GUILFORD COUNTY
 STATION: 28+98.81 -Y4-

SHEET 3 OF 3

STATE OF NORTH CAROLINA
 DEPARTMENT OF TRANSPORTATION
 RALEIGH
GENERAL DRAWING
 BRIDGE ON SR 2523
 (YANCEYVILLE RD.) OVER
 GEL I-85 BYPASS BETWEEN
 SR 2359 AND SR 2532



DOCUMENT NOT CONSIDERED FINAL UNLESS ALL SIGNATURES COMPLETED

PLANS PREPARED BY:
M MOTT MACDONALD
 PO Box 700
 Fuquay-Varina, NC 27526
 (919) 552-2253
 www.mottmac.com
 LICENSE NO. F-0669

REVISIONS						SHEET NO.
NO.	BY:	DATE:	NO.	BY:	DATE:	S6-3
1			3			TOTAL SHEETS
2			4			34

15/07/2017 1:33:20 PM C:\Users\j14_Yanceyville_Rd\Plans\U-2525C_SMU_GD3_401245.dgn

DRAWN BY: L. T. FORBIS DATE: 7-2017
 CHECKED BY: J. T. WILLIAMS DATE: 8-2017
 DESIGN ENGINEER OF RECORD: J. C. FRYE DATE: 10-2017