

FOUNDATION LAYOUT

DIMENSIONS LOCATING PILES ARE SHOWN TO PILE CENTERLINE.

ORIENT PILES AS SHOWN.

FOR TEMPORARY SHORING NOTES, SEE GENERAL DRAWING SHEET 3 OF 3

NOTES:

SEE ROADWAY PLANS AND SECTION 235 OF THE STANDARD SPECIFICATIONS FOR THE SETTLEMENT GAUGES REQUIRED AT END BENT NO.1 AND END BENT NO.2.

FOR PILES, SEE SECTION 450 OF THE STANDARD SPECIFICATIONS.

PILES AT BENT NO.1 ARE DESIGNED FOR A FACTORED RESISTANCE OF 75 TONS PER PILE.

DRIVE PILES AT BENT NO.1 TO A REQUIRED DRIVING RESISTANCE OF 125 TONS PER PILE.

STEEL H-PILE POINTS ARE REQUIRED FOR STEEL H-PILES AT BENT NO.1. FOR STEEL PILE POINTS, SEE SECTION 450 OF THE STANDARD SPECIFICATIONS.

THE SPREAD FOOTINGS AT END BENT NO.1 AND END BENT NO.2 ARE DESIGNED FOR A FACTORED RESISTANCE OF 3.5 TSF.

OBSERVE A 1 MONTH WAITING PERIOD AFTER CONSTRUCTING THE END BENT RETAINING WALL UP TO THE BOTTOM OF FOOTING ELEVATION BEFORE BEGINNING CONSTRUCTION OF THE FOOTING AND CAP AT END BENT NO.1 AND END BENT NO.2. FOR BRIDGE WAITING PERIODS, SEE ROADWAY PLANS AND SPECIAL PROVISIONS.

SURVEY AND RECORD THE BOTTOM OF FOOTING ELEVATION FOR END BENT NO.1 AND END BENT NO.2 AT THE FOLLOWING POINTS DURING CONSTRUCTION. REPORT THESE ELEVATIONS TO THE ENGINEER.

- A. AFTER COMPLETION OF THE FOOTING AND CAP.
- B. AFTER COMPLETION OF THE SUPERSTRUCTURE AND BRIDGE DECK.

INSTALL PILES AT BENT NO.1 TO A TIP ELEVATION NO HIGHER THAN 10 FEET BELOW THE BOTTOM OF FOOTING.

IF NECESSARY, PREDRILL PILE LOCATIONS AT BENT NO.1 TO AN ELEVATION NO LOWER THAN 10 FEET BELOW THE BOTTOM OF FOOTING WITH EQUIPMENT THAT WILL RESULT IN A MAXIMUM PREDRILLING DIAMETER OF 12". FOR PREDRILLING FOR PILES, SEE SECTION 450 OF THE STANDARD SPECIFICATIONS.

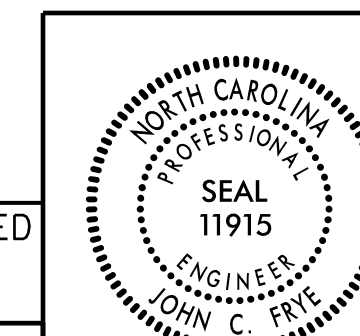
PROJECT NO. U-2525C
GUILFORD COUNTY
 STATION: 28+98.81 -Y4-

SHEET 2 OF 3

STATE OF NORTH CAROLINA
 DEPARTMENT OF TRANSPORTATION
 RALEIGH

GENERAL DRAWING

BRIDGE ON SR 2523
 (YANCEYVILLE RD.) OVER
 GEL I-85 BYPASS BETWEEN
 SR 2359 AND SR 2532



DOCUMENT NOT CONSIDERED FINAL UNLESS ALL SIGNATURES COMPLETED

PLANS PREPARED BY:
 MOTT MACDONALD
 PO Box 700
 Fuquay-Varina, NC 27526
 (919) 552-2253
 www.mottmac.com
 LICENSE NO. F-0669

REVISIONS						SHEET NO.
NO.	BY:	DATE:	NO.	BY:	DATE:	S6-2
1			3			TOTAL SHEETS
2			4			34

157077
 12/21/2017 12:21:20 PM
 Y:\Projects\116_Rd\PI\ms\U-2525C_SMU_FL_401245.dgn