

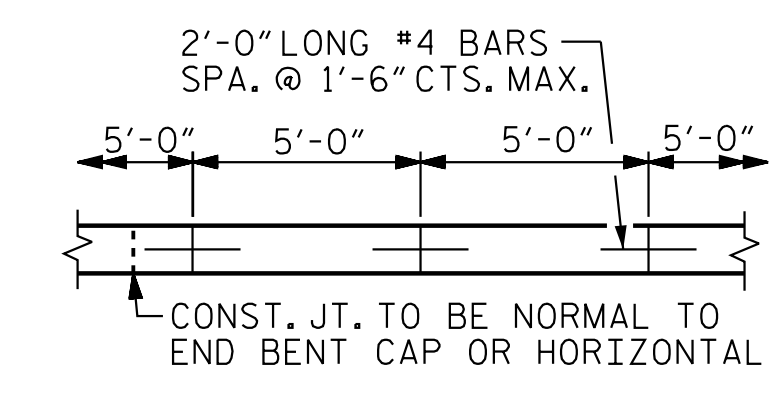
GENERAL NOTES

SLOPE PROTECTION SHALL BE PLACED UNDER THE ENDS OF THE BRIDGE AS SHOWN IN THE DETAILS. THE CONTRACTOR, AT HIS OPTION, MAY USE ALTERNATE "B" ONLY FOR HIGHWAY OVER HIGHWAY GRADE SEPARATIONS WITH 2:1 END BENT SLOPE IN RURAL, UNPOPULATED AREAS. STRAIGHT EDGING WILL NOT BE REQUIRED UNLESS, IN THE OPINION OF THE ENGINEER, VISUAL INSPECTION INDICATES A NEED FOR IT. MEASUREMENT AND PAYMENT SHALL BE AS PRESCRIBED IN SECTION 462 OF THE STANDARD SPECIFICATIONS. FOR BERM WIDTH, SEE GENERAL DRAWING.

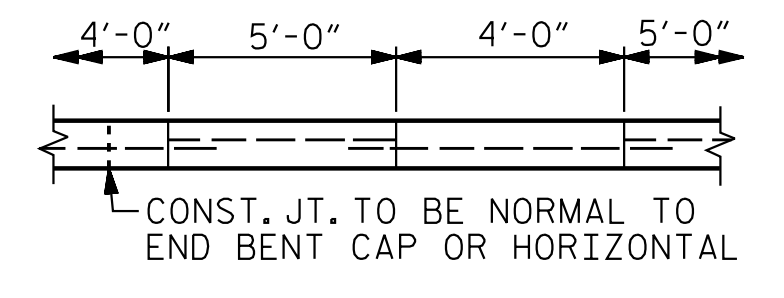
SLOPE PROTECTION SHALL CONSIST OF 4" POURED-IN-PLACE CONCRETE PAVING AS SHOWN IN THE DETAILS ON THIS SHEET. CONCRETE SHALL BE CLASS "B". THE CONCRETE SURFACE SHALL BE FLOATED WITH A WOODEN FLOAT AND FINISHED. WELDED WIRE FABRIC REINFORCING SHALL BE 6 X 6 - W1.4 X W1.4, 60" WIDE. SLOPE PROTECTION SHALL BE POURED IN 5' STRIPS AS SHOWN IN THE "POURING DETAIL" WITH 2'-0" LONG #4 BARS PLACED ALONG THE SLOPE BETWEEN STRIPS AT 1'-6" MAXIMUM SPACING. SLOPE PROTECTION MAY BE POURED IN ALTERNATE 4' AND 5' STRIPS AS SHOWN IN THE "OPTIONAL POURING DETAIL" WITH ADJACENT RUNS OF WELDED WIRE FABRIC LAPPING AT LEAST 6". THE COST OF THE WELDED WIRE FABRIC AND #4 BARS, IF USED, SHALL BE INCLUDED IN THE CONTRACT UNIT PRICE BID PER SQUARE YARD FOR SLOPE PROTECTION.

BRIDGE @ STA. 337+20.09	4 INCH SLOPE PROTECTION	* WELDED WIRE FABRIC 60 INCHES WIDE
	SQUARE YARDS	APPROX. L.F.
END BENT 1	971	1748
END BENT 2	826	1487

NOTE: QUANTITIES SHOWN ARE FOR MAT'L LOCATED RIGHT OF THE SURVEY LINE -L-
* QUANTITY SHOWN IS BASED ON 5' POURS.



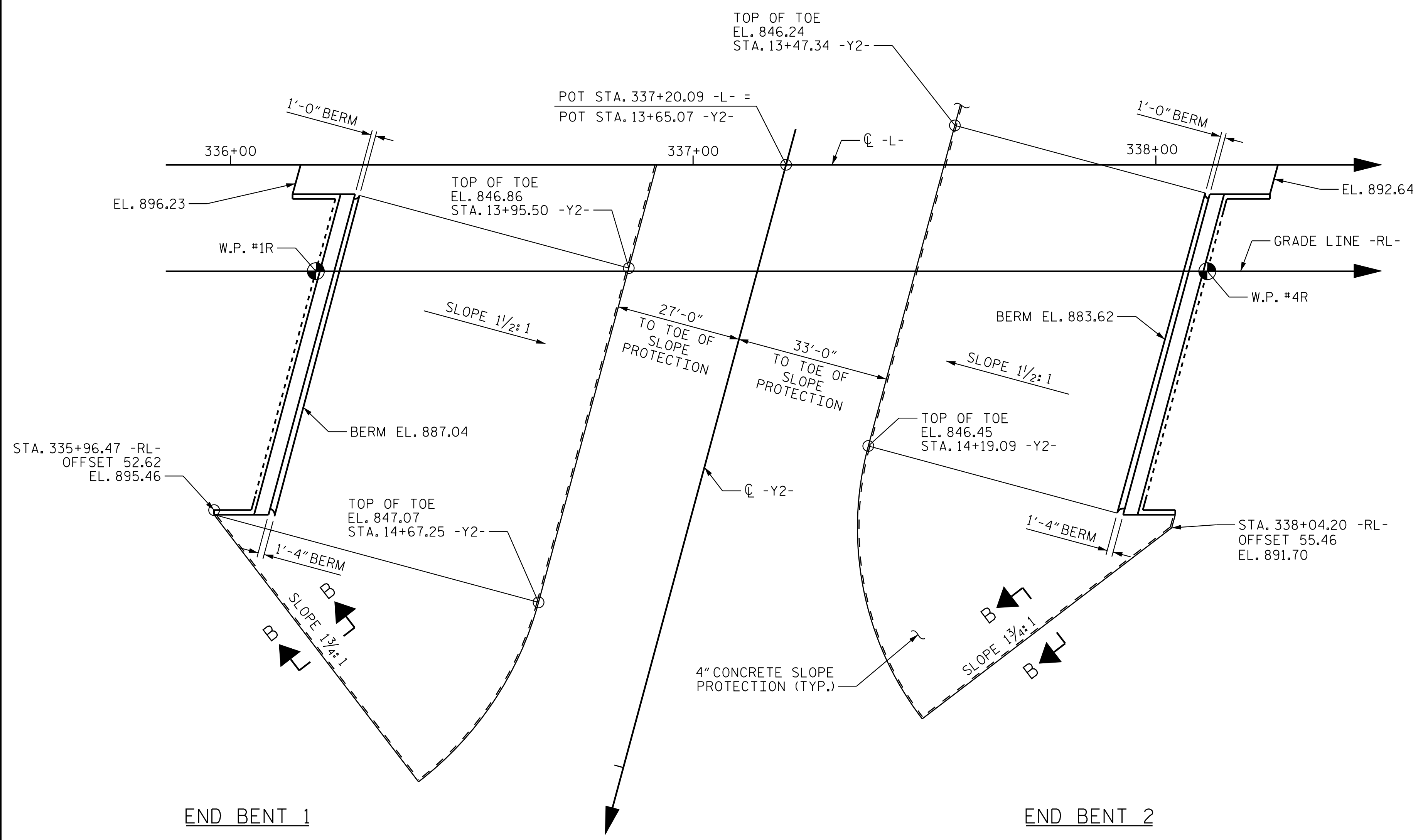
POURING DETAIL



OPTIONAL POURING DETAIL

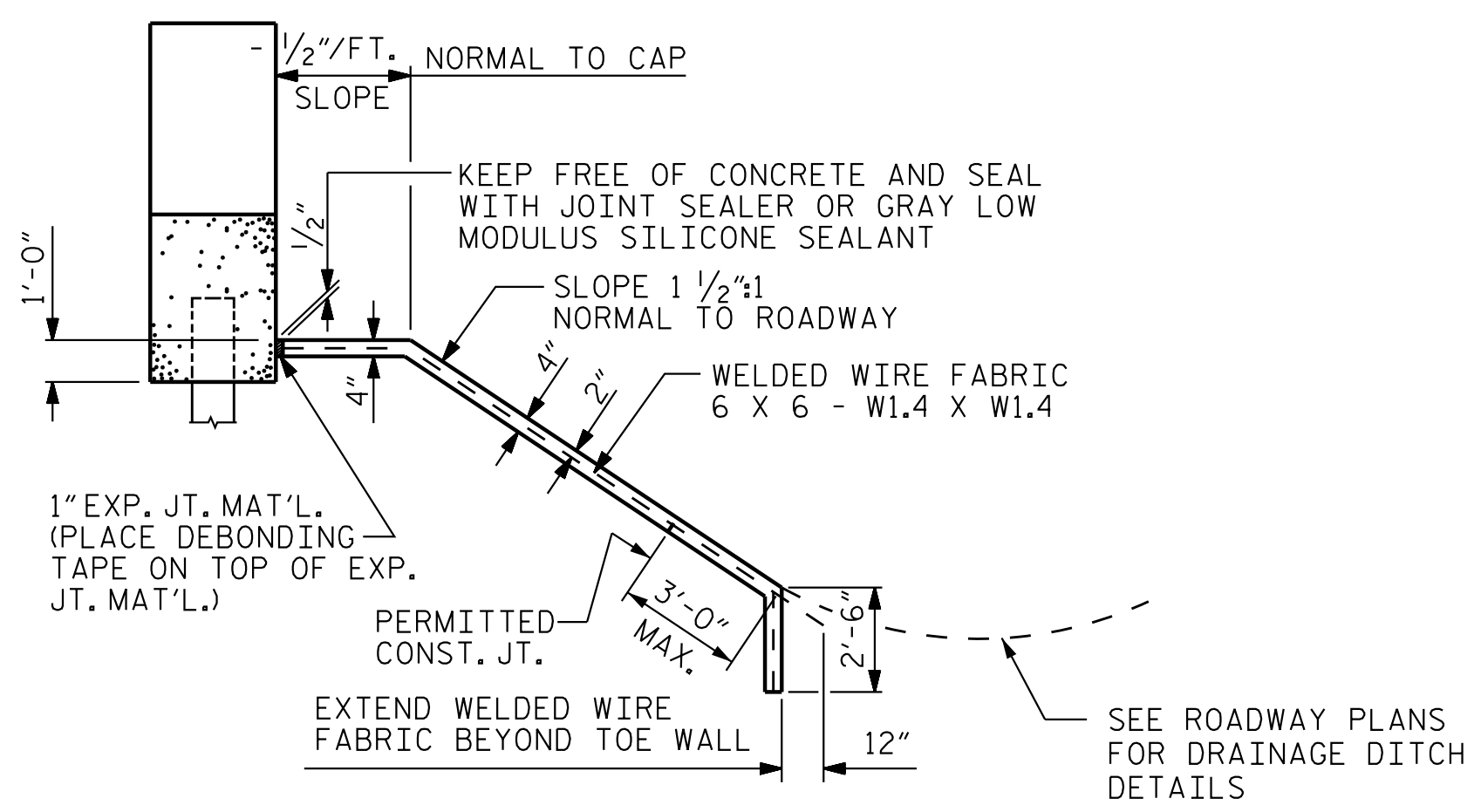
STRIP WIDTHS MAY VARY IN CURVED PORTION.

POUR A 4'-0" STRIP FIRST. STRIP WIDTHS MAY VARY IN CURVED PORTION.

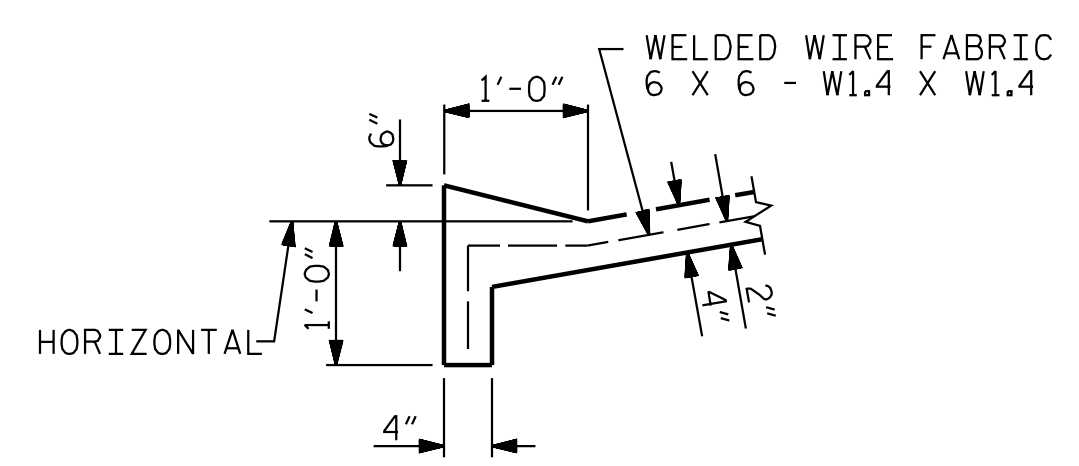


END BENT 1

END BENT 2



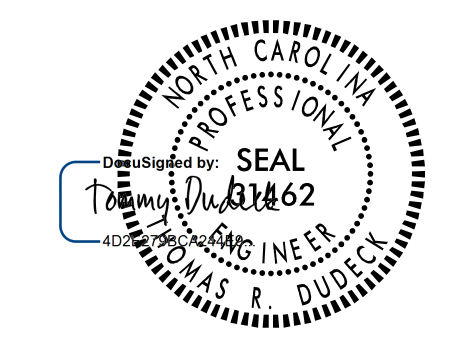
SECTION ALONG C-C OF ROADWAY



SECTION B-B

PROJECT NO. U-2525C
GUILFORD COUNTY
 STATION: 337+20.09 -L-

STATE OF NORTH CAROLINA
 DEPARTMENT OF TRANSPORTATION
 RALEIGH
**SLOPE PROTECTION
 DETAILS**
 FOR BRIDGE ON GEL I-85 BYPASS (-L-) OVER NORFOLK SOUTHERN RR (-Y2-) BETWEEN SR 2526 (SUMMIT AVE.) AND SR 2523 (YANCEYVILLE RD.)
 (RL)



REVISIONS						SHEET NO. S5-36
NO.	BY:	DATE:	NO.	BY:	DATE:	
1			3			TOTAL SHEETS 38
2			4			

DOCUMENT NOT CONSIDERED FINAL UNLESS ALL SIGNATURES COMPLETED

STR. #5



Stantec Consulting Services Inc.
 801 Jones Franklin Road
 Suite 300
 Raleigh, NC 27606
 Tel. (919) 851-6866
 Fax. (919) 851-7024
 www.stantec.com
 License No. F-0672

DRAWN BY: M.B. ISENHOUR DATE: 06-16-16
 CHECKED BY: V. E. FRAGA DATE: 06-01-17

DESIGN ENGINEER OF RECORD: T.R. DUDECK DATE: 01/16/18

1/12/2018 5:50:20 PM jgelle U:\Structures\Drawings\Site 5\Final\RL U-2525C-SD_S.P.dgn