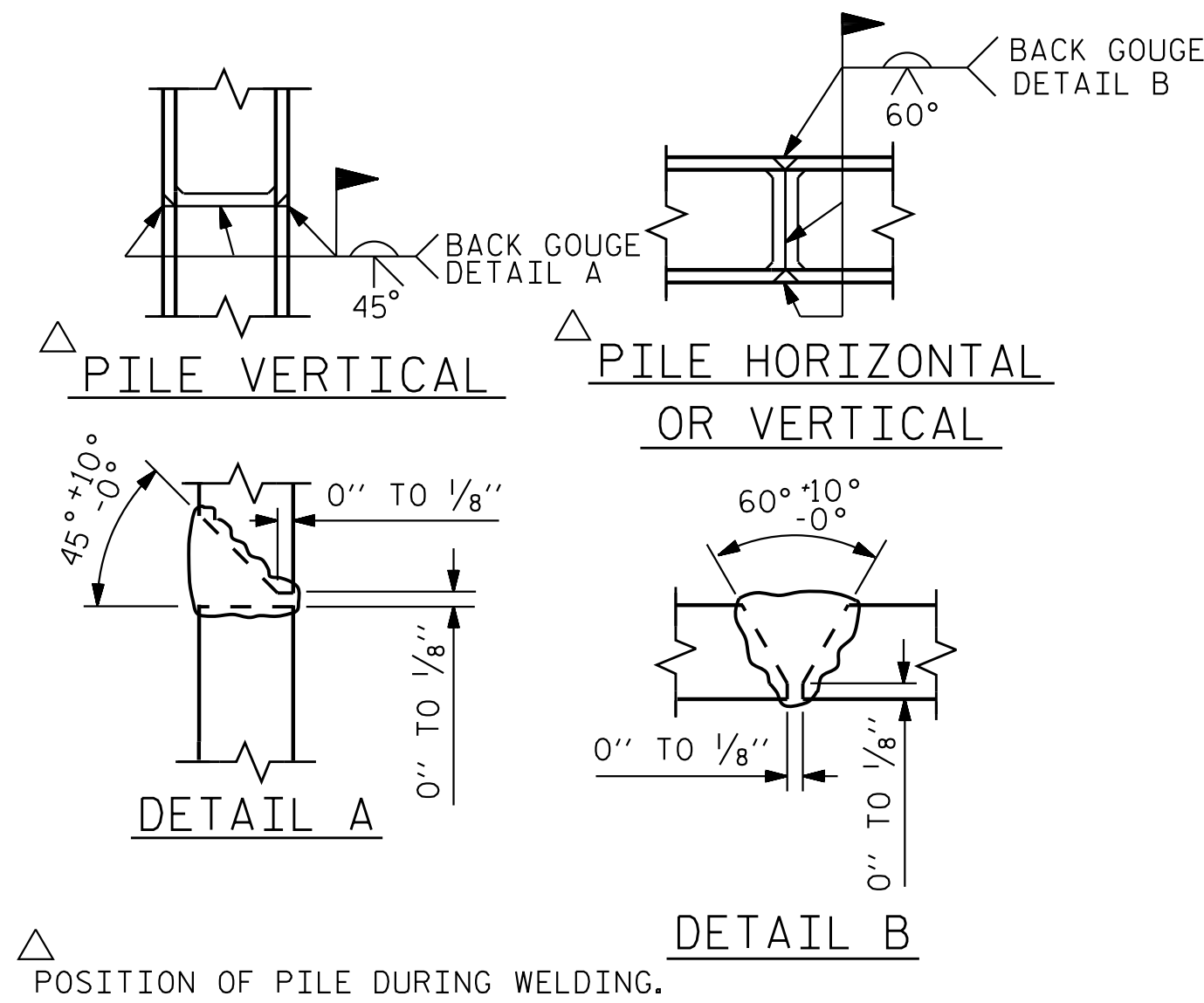


BAGGED STONE AND PIPE SHALL BE PLACED IMMEDIATELY AFTER COMPLETION OF END BENT EXCAVATION. PIPE MAY BE EITHER CONCRETE, CORRUGATED STEEL, CORRUGATED ALUMINUM ALLOY, OR CORRUGATED PLASTIC. PERFORATED PIPE WILL NOT BE ALLOWED.

BAGGED STONE SHALL REMAIN IN PLACE UNTIL THE ENGINEER DIRECTS THAT IT BE REMOVED. THE CONTRACTOR SHALL REMOVE AND DISPOSE OF SILT ACCUMULATIONS AT BAGGED STONE WHEN SO DIRECTED BY THE ENGINEER. BAGS SHALL BE REMOVED AND REPLACED WHENEVER THE ENGINEER DETERMINES THAT THEY HAVE DETERIORATED AND LOST THEIR EFFECTIVENESS.

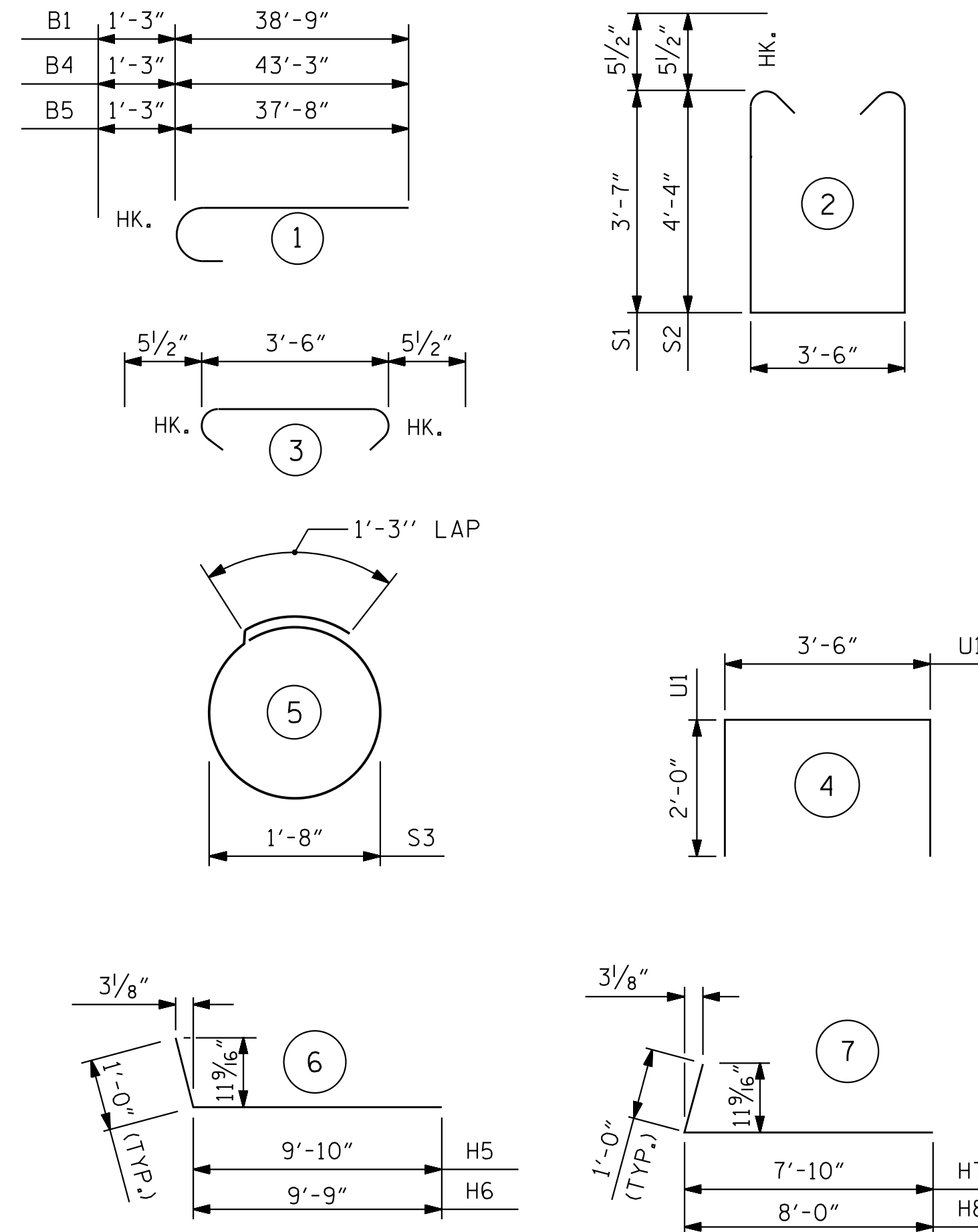
NO SEPARATE PAYMENT WILL BE MADE FOR THIS WORK AND THE ENTIRE COST OF THIS WORK SHALL BE INCLUDED IN THE UNIT CONTRACT PRICE BID FOR THE SEVERAL PAY ITEMS.

### TEMPORARY DRAINAGE AT END BENT



### PILE SPLICE DETAILS

### BAR TYPES



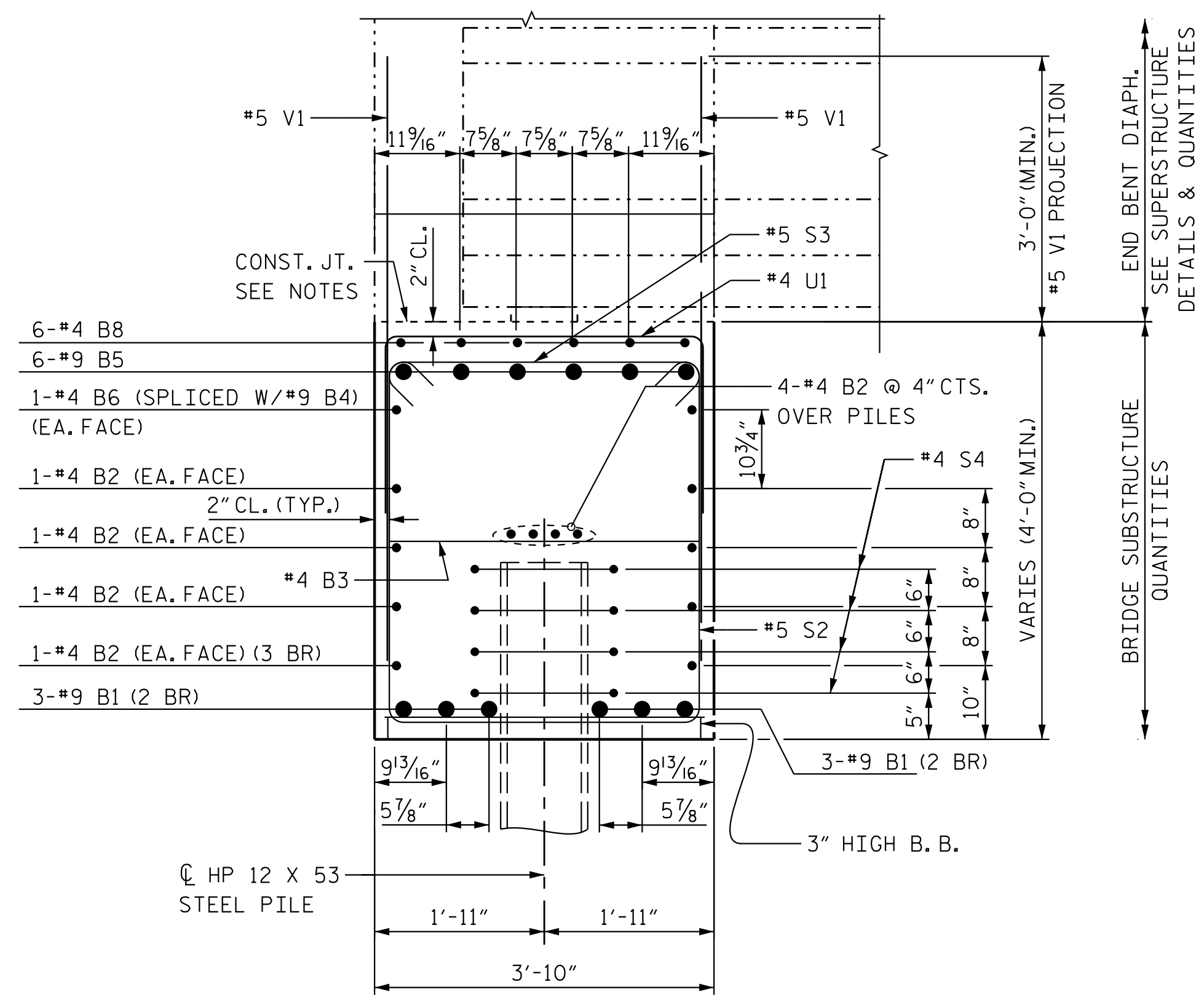
ALL BAR DIMENSIONS ARE OUT TO OUT.

### BILL OF MATERIAL

#### END BENT 2

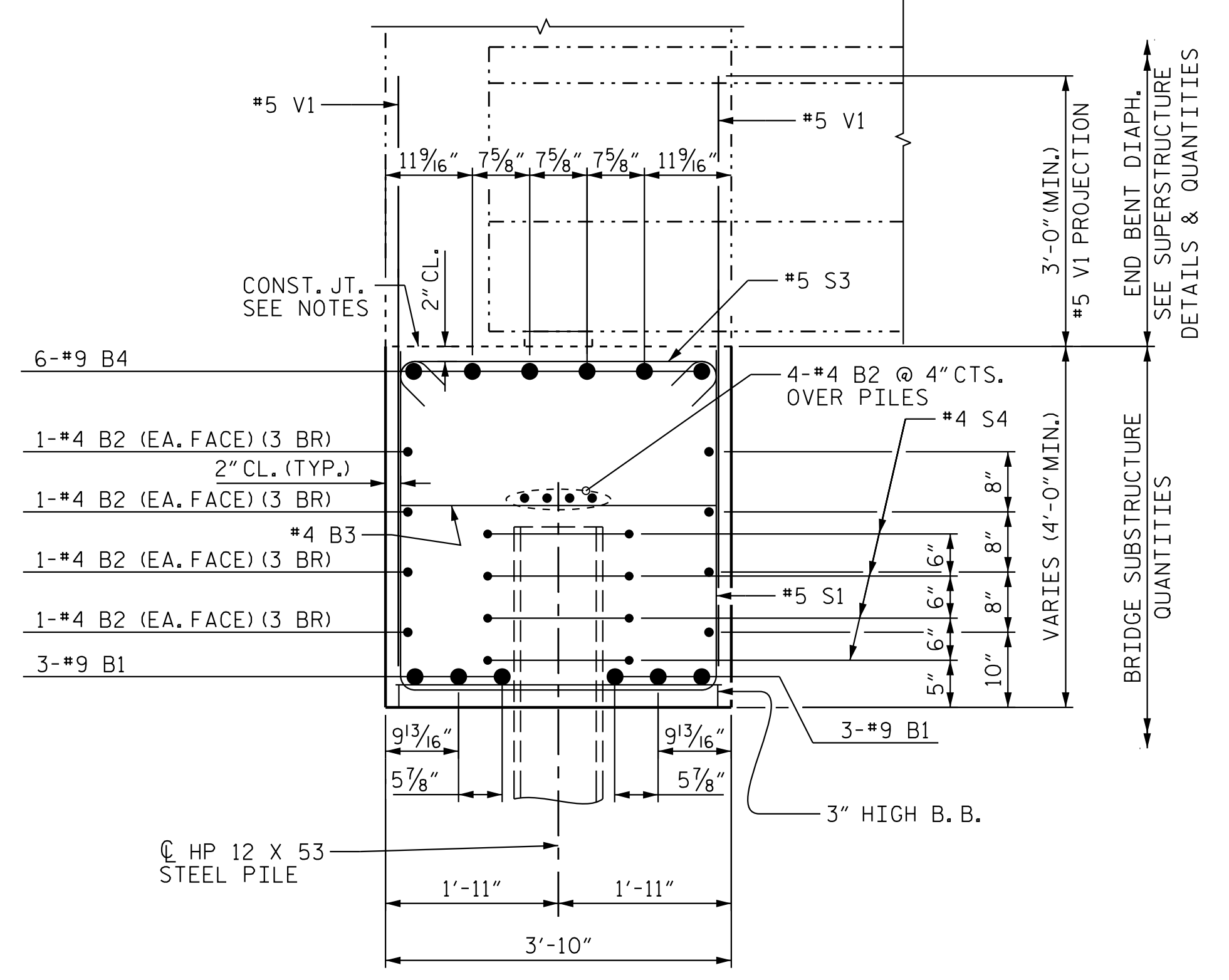
BAR	NO.	SIZE	TYPE	LENGTH	WEIGHT
B1	12	#9	1	40'-0"	1632
B2	36	#4	STR	25'-5"	612
B3	20	#4	STR	3'-6"	47
B4	6	#9	1	45'-1"	920
B5	6	#9	1	37'-11"	774
B6	2	#4	STR	30'-0"	41
B7	6	#4	STR	12'-3"	50
B8	6	#4	STR	16'-7"	67
H5	15	#5	6	10'-10"	170
H6	15	#5	6	10'-9"	169
H7	14	#4	7	8'-10"	83
H8	14	#4	7	9'-0"	85
K10	20	#4	STR	4'-9"	64
K11	8	#4	STR	3'-9"	21
S1	38	#5	2	11'-7"	460
S2	41	#5	2	12'-5"	531
S3	70	#5	3	4'-5"	323
S4	36	#4	5	6'-6"	157
U1	19	#4	4	7'-6"	96
V1	118	#5	STR	6'-10"	842
V2	26	#5	STR	9'-9"	265
V3	24	#5	STR	8'-10"	222

REINFORCING STEEL	LBS. 7,631
CLASS A CONCRETE BREAKDOWN:	
POUR #1: CAP, COLLARS, ETC.	C.Y. 48.9
POUR #2: BACKWALL	C.Y. 4.4
CLASS A CONCRETE TOTAL	C.Y. 53.3
HP12X53 PILES	
NO. 9	FT. 675.00
PILE DRIVING EQUIPMENT	
SETUP FOR STEEL PILES	EA. 9



### SECTION A-A

SEE 'END BENT 1' SHEET 1 OF 3 scaled up by 1.5



### SECTION B-B

SEE 'END BENT 1' SHEET 1 OF 3 scaled up by 1.5

PROJECT NO. U-2525C

GUILFORD COUNTY

STATION: 337+20.09 -L-

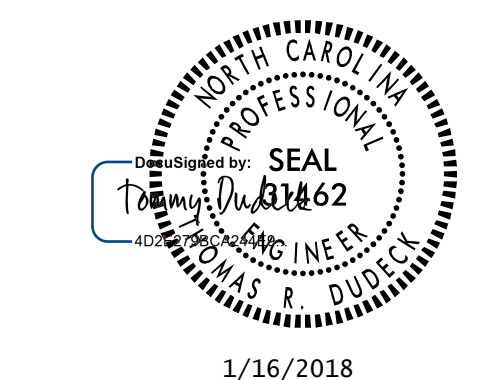
SHEET 3 OF 3

STATE OF NORTH CAROLINA  
DEPARTMENT OF TRANSPORTATION  
RALEIGH

SUBSTRUCTURE

END BENT 2 DETAILS

(LL)



1/16/2018

DOCUMENT NOT CONSIDERED FINAL UNLESS ALL SIGNATURES COMPLETED

REVISIONS						SHEET NO.
NO.	BY:	DATE:	NO.	BY:	DATE:	S5-35
1			3			TOTAL SHEETS 38
2			4			

STR. #5

1/12/2018 5:50:45 PM jgeille

U:\Structures\Drawing\Site 5\Final\RL U-2525C-SD.E-2.dgn

Stantec Consulting Services Inc.  
801 Jones Franklin Road  
Suite 300  
Raleigh, NC 27606  
Tel. (919) 851-6866  
Fax. (919) 851-7024  
www.stantec.com  
License No. F-0672

DRAWN BY: J. B. GEILLE DATE: 01-27-17  
CHECKED BY: V. E. FRAGA DATE: 06-05-17  
DESIGN ENGINEER OF RECORD: T. R. DUDECK DATE: 01/16/18