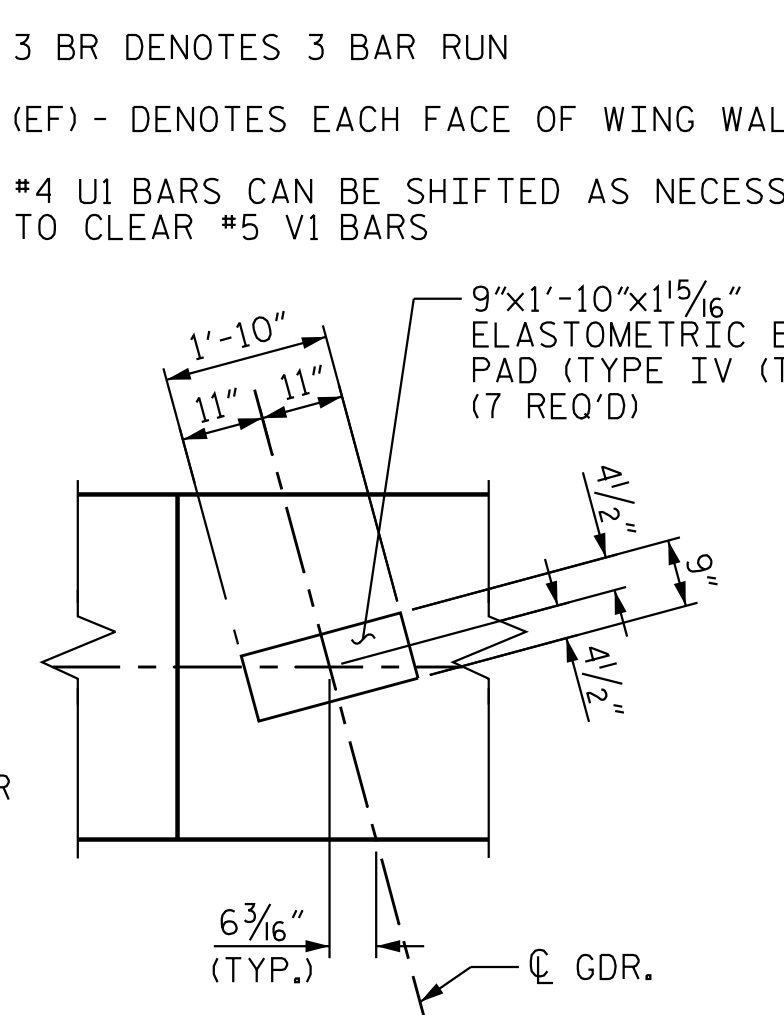


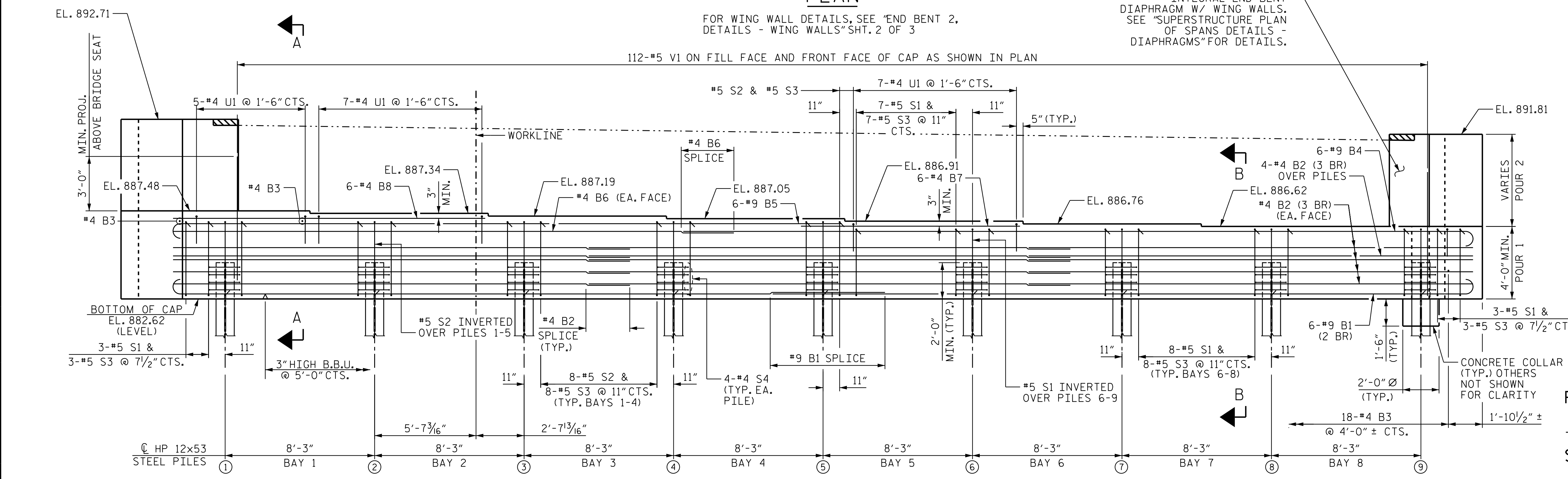
**NOTES**  
 INSTALL THE 4" DIA. DRAIN PIPE THROUGH THE WING WALL AS REQUIRED FOR REINFORCED BRIDGE APPROACH FILLS. SEE THE ROADWAY PLANS. REINFORCING STEEL IN THE WING WALL MAY BE SHIFTED AS NECESSARY TO CLEAR THE DRAIN PIPE.  
 2 BR DENOTES 2 BAR RUN  
 3 BR DENOTES 3 BAR RUN  
 (EF) - DENOTES EACH FACE OF WING WALL  
 #4 U1 BARS CAN BE SHIFTED AS NECESSARY TO CLEAR #5 V1 BARS  
 9" x 1'-10" x 1 1/2" ELASTOMETRIC BRG PAD (TYPE IV (TYP.)) (7 REQ'D)



**PLAN**

FOR WING WALL DETAILS, SEE "END BENT 2, DETAILS - WING WALLS" SHT. 2 OF 3

INTEGRAL END BENT DIAPHRAGM W/ WING WALLS. SEE "SUPERSTRUCTURE PLAN OF SPANS DETAILS - DIAPHRAGMS" FOR DETAILS.

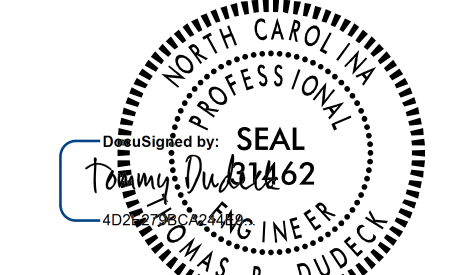


**ELEVATION**

SPlice LENGTH	
#9 B1	6'-3"
#4 B2, B6	2'-5"

PROJECT NO. U-2525C  
 GUILFORD COUNTY  
 STATION: 337+20.09 -L-

SHEET 1 OF 3  
 STATE OF NORTH CAROLINA  
 DEPARTMENT OF TRANSPORTATION  
 RALEIGH  
 SUBSTRUCTURE  
 END BENT 2  
 (RL)



REVISIONS						SHEET NO.
NO.	BY:	DATE:	NO.	BY:	DATE:	S5-33
1			3			TOTAL SHEETS 38
2			4			

Stantec Consulting Services Inc.  
 801 Jones Franklin Road  
 Suite 300  
 Raleigh, NC 27606  
 Tel. (919) 851-6866  
 Fax. (919) 851-7024  
 www.stantec.com  
 License No. F-0672

DRAWN BY: J. B. GEILE DATE: 01-25-17 DESIGN ENGINEER  
 CHECKED BY: V. E. FRAGA DATE: 06-05-17 OF RECORD: T.R. DUDECK DATE: 01/16/18

DOCUMENT NOT CONSIDERED FINAL UNLESS ALL SIGNATURES COMPLETED