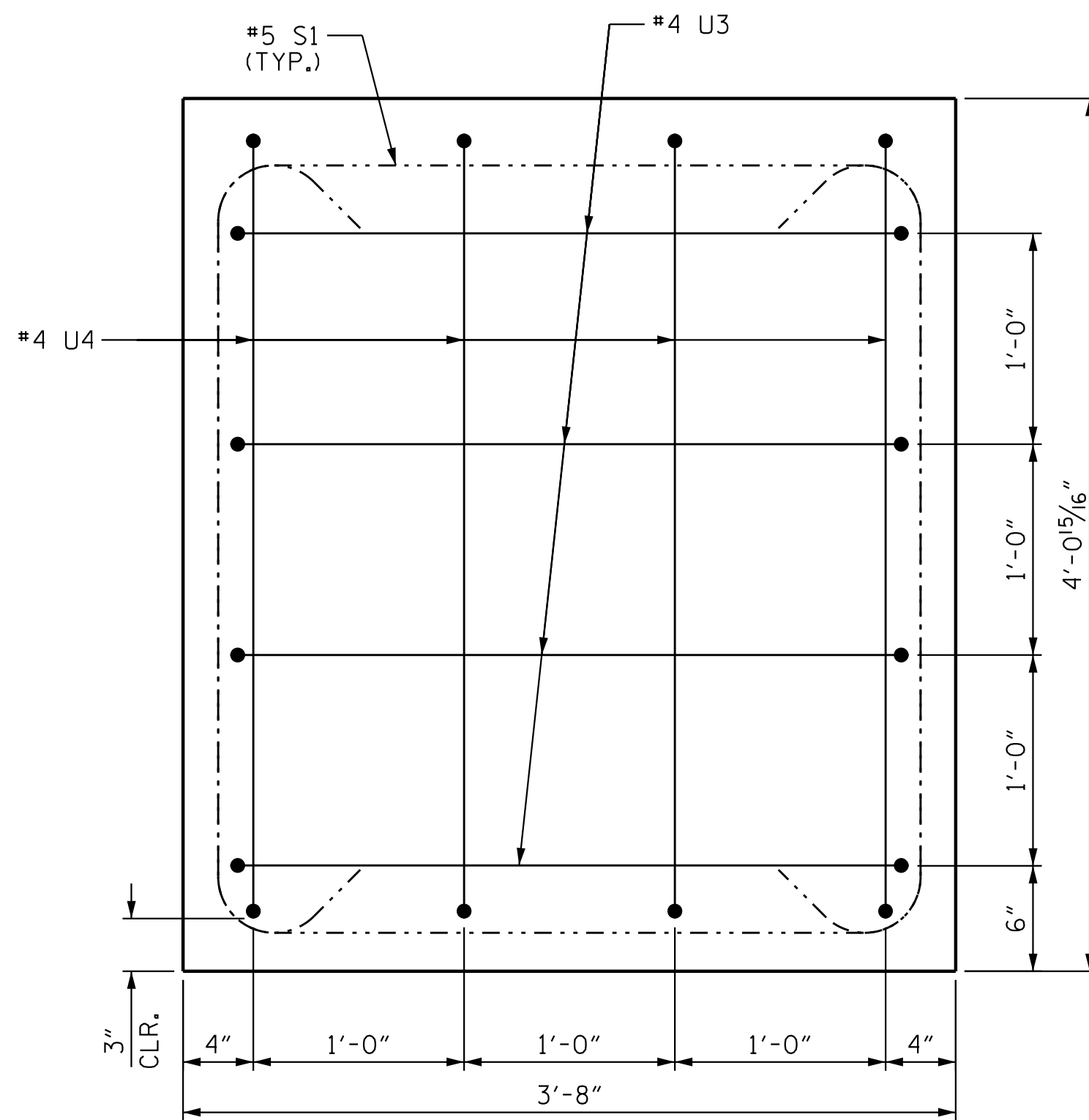
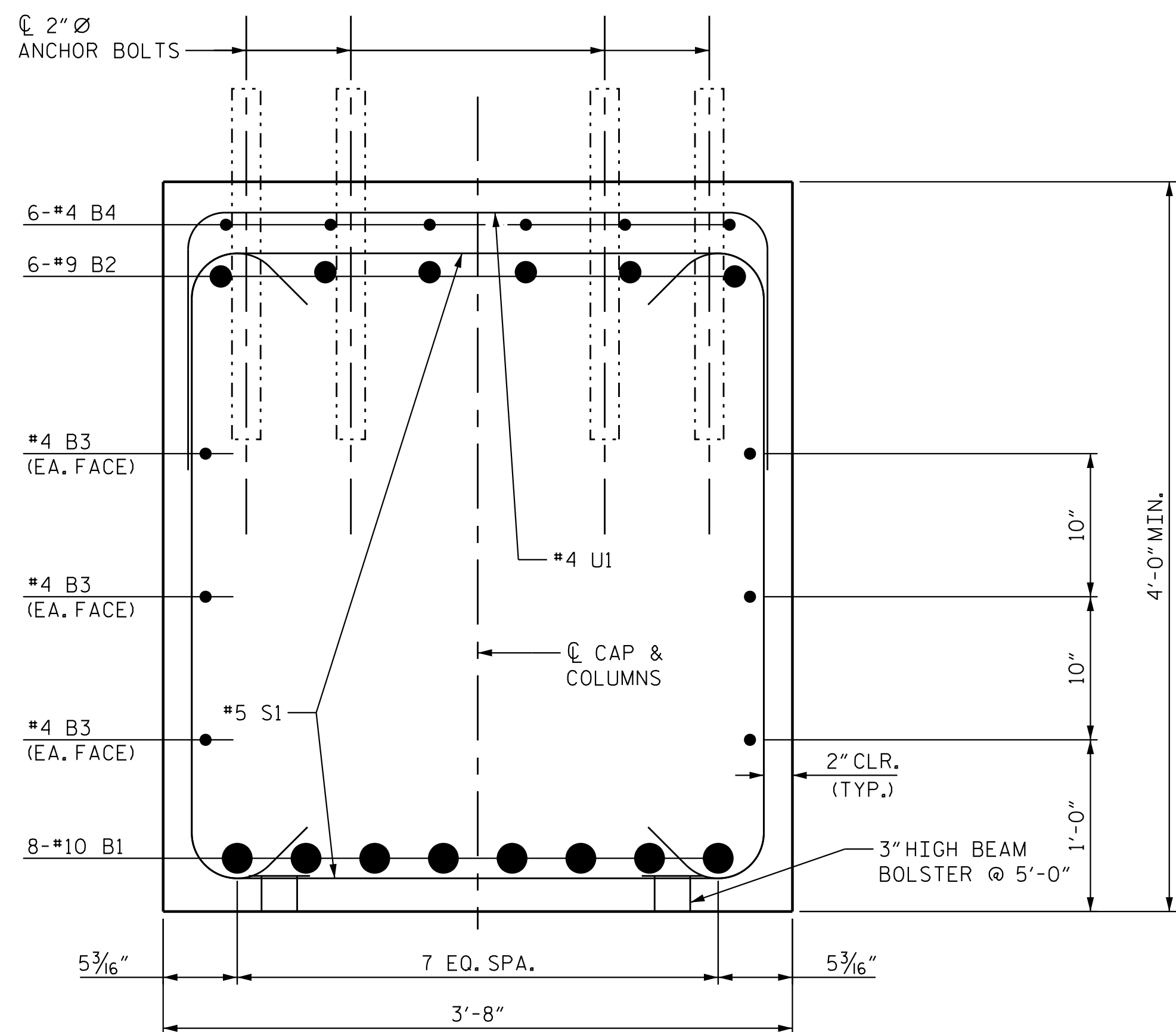


VIEW A-A



VIEW B-B



VIEW C-C

BAR TYPES

B1	1'-5"	35'-8"
B2	1'-3"	36'-1"
V1	1'-3"	42'-10"
V2	1'-3"	42'-7"
V3	1'-3"	42'-4"
V4	1'-3"	42'-0"

\*\*\* THE SP-1 SPIRAL REINFORCING STEEL SHALL BE W31 OR D-31 COLD DRAWN WIRE OR #5 PLAIN OR DEFORMED BAR.

\*\* THE SP-2, SP-3, SP-4, & SP-5 SPIRAL REINFORCING STEEL SHALL BE W20 OR D-20 COLD DRAWN WIRE OR #4 PLAIN OR DEFORMED BAR.

2'-0" LAP W/ SP-2, SP-3, SP-4, OR SP-5

1 1/2 EXTRA TURNS @ BOTT. DRILLED PIER

4 SPACERS

2'-8"

ALL BAR DIMENSIONS ARE OUT TO OUT.

BILL OF MATERIAL

BENT #1

BAR	NO.	SIZE	TYPE	LENGTH	WEIGHT
B1	16	#10	1	37'-1"	2554
B2	12	#9	1	37'-4"	1524
B3	18	#4	STR	22'-9"	274
B4	36	#4	STR	6'-0"	145
B5	6	#4	STR	3'-8"	15
M1	16	#10	STR	59'-10"	4120
M2	48	#10	STR	51'-10"	10706
S1	105	#5	2	11'-6"	1260
U1	33	#4	3	6'-4"	140
U2	4	#4	3	5'-10"	16
U3	9	#4	3	5'-2"	32
U4	4	#4	3	5'-8"	16
V1	16	#10	1	44'-1"	3036
V2	16	#10	1	43'-10"	3018
V3	16	#10	1	43'-7"	3001
V4	16	#10	1	43'-3"	2978
REINFORCING STEEL					LBS. 32,835
SP-1	1	***	4	1021'-11"	1066
SP-2	1	**	5	1342'-1"	897
SP-3	1	**	5	1333'-11"	892
SP-4	1	**	5	1325'-8"	886
SP-5	1	**	5	1317'-5"	881
SP-6	3	***	4	863'-7"	2703
SPIRAL COLUMN					LBS. 7,325
DRILLED PIER CONC BREAKDOWN:					
POUR #1 DRILLED PIERS					C. Y. 64.1
3'-6" DIA DRILLED PIERS					
IN SOIL					LIN. FT. 165.00
3'-6" DIA DRILLED PIERS					
NOT IN SOIL					LIN. FT. 15.00
CLASS A CONCRETE BREAKDOWN					
POUR #2 COLUMNS					C. Y. 41.2
POUR #3 CAP					C. Y. 36.0
TOTAL CLASS A CONC.					C. Y. 77.2
* CSL TUBES					LIN. FT. 744.00

\* NO SEPARATE PAYMENT WILL BE MADE FOR CSL TUBES. CSL TUBES WILL BE INCLUDED IN THE UNIT BID PRICE FOR DRILLED PIERS.

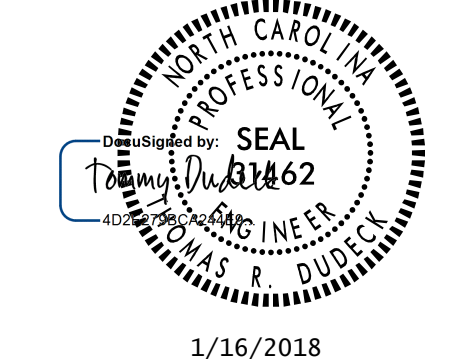
PROJECT NO. U-2525C  
GUILFORD COUNTY  
 STATION: 337+20.09 -L-

SHEET 3 OF 3

STATE OF NORTH CAROLINA  
 DEPARTMENT OF TRANSPORTATION  
 RALEIGH

SUBSTRUCTURE  
 BENT 1 DETAILS

(RL)



1/16/2018  
 DOCUMENT NOT CONSIDERED FINAL UNLESS ALL SIGNATURES COMPLETED

NO.	BY:	DATE:	NO.	BY:	DATE:	SHEET NO.
1			3			S5-29
2			4			TOTAL SHEETS 38

Stantec Consulting Services Inc.  
 801 Jones Franklin Road  
 Suite 300  
 Raleigh, NC 27606  
 Tel. (919) 851-6866  
 Fax. (919) 851-7024  
 www.stantec.com  
 License No. F-0672

DRAWN BY : J. B. GEILE DATE : 01-30-17  
 CHECKED BY : V. E. FRAGA DATE : 06-01-17  
 DESIGN ENGINEER OF RECORD : T. R. DUDECK DATE : 01/16/18

U:\Structures\Drawing\Site 5\Final\RL U-2525C-SD\_B\*\_1\_3.dgn  
 1/12/2018 5:49:53 PM jgeile