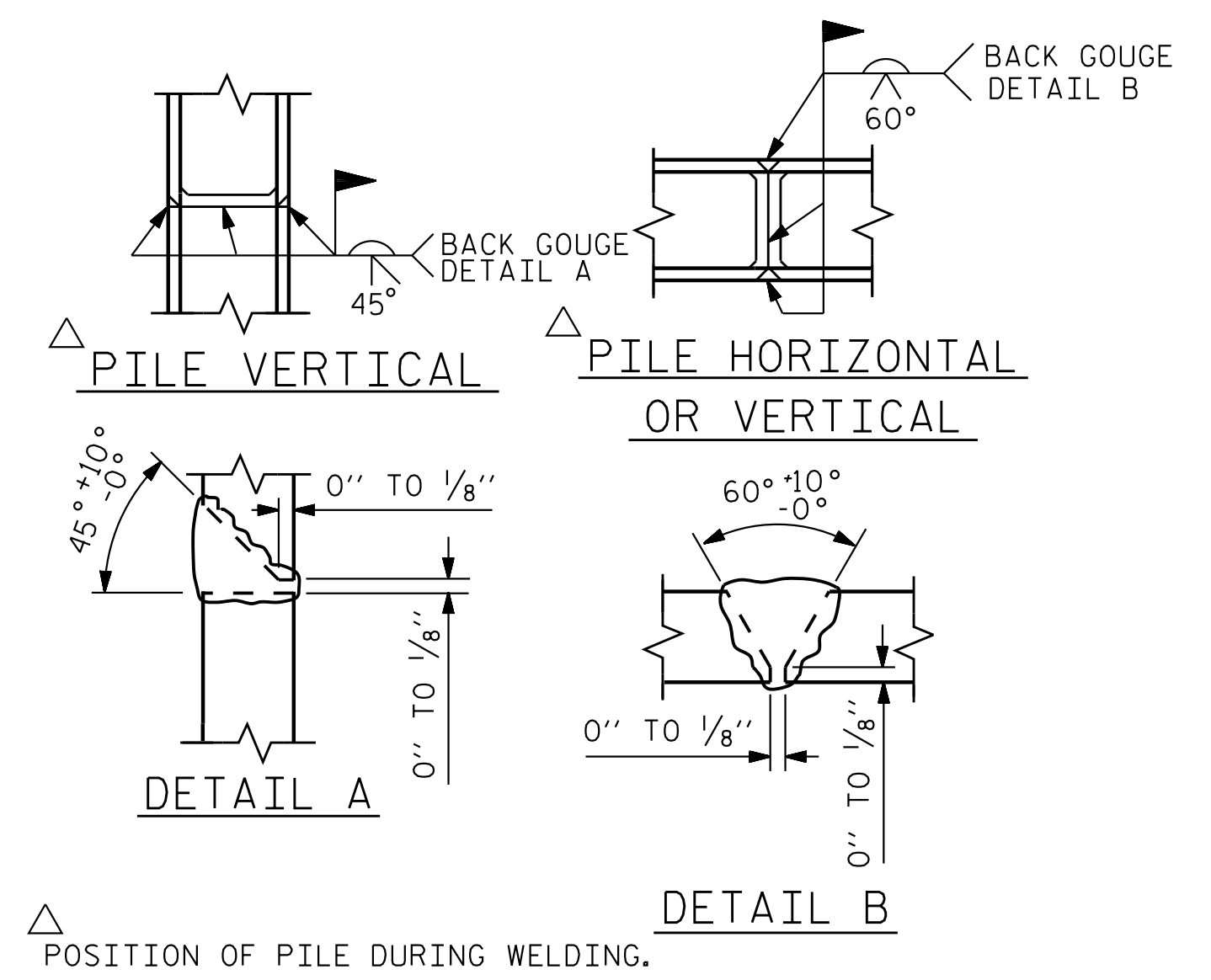


BAGGED STONE AND PIPE SHALL BE PLACED IMMEDIATELY AFTER COMPLETION OF END BENT EXCAVATION. PIPE MAY BE EITHER CONCRETE, CORRUGATED STEEL, CORRUGATED ALUMINUM ALLOY, OR CORRUGATED PLASTIC. PERFORATED PIPE WILL NOT BE ALLOWED.

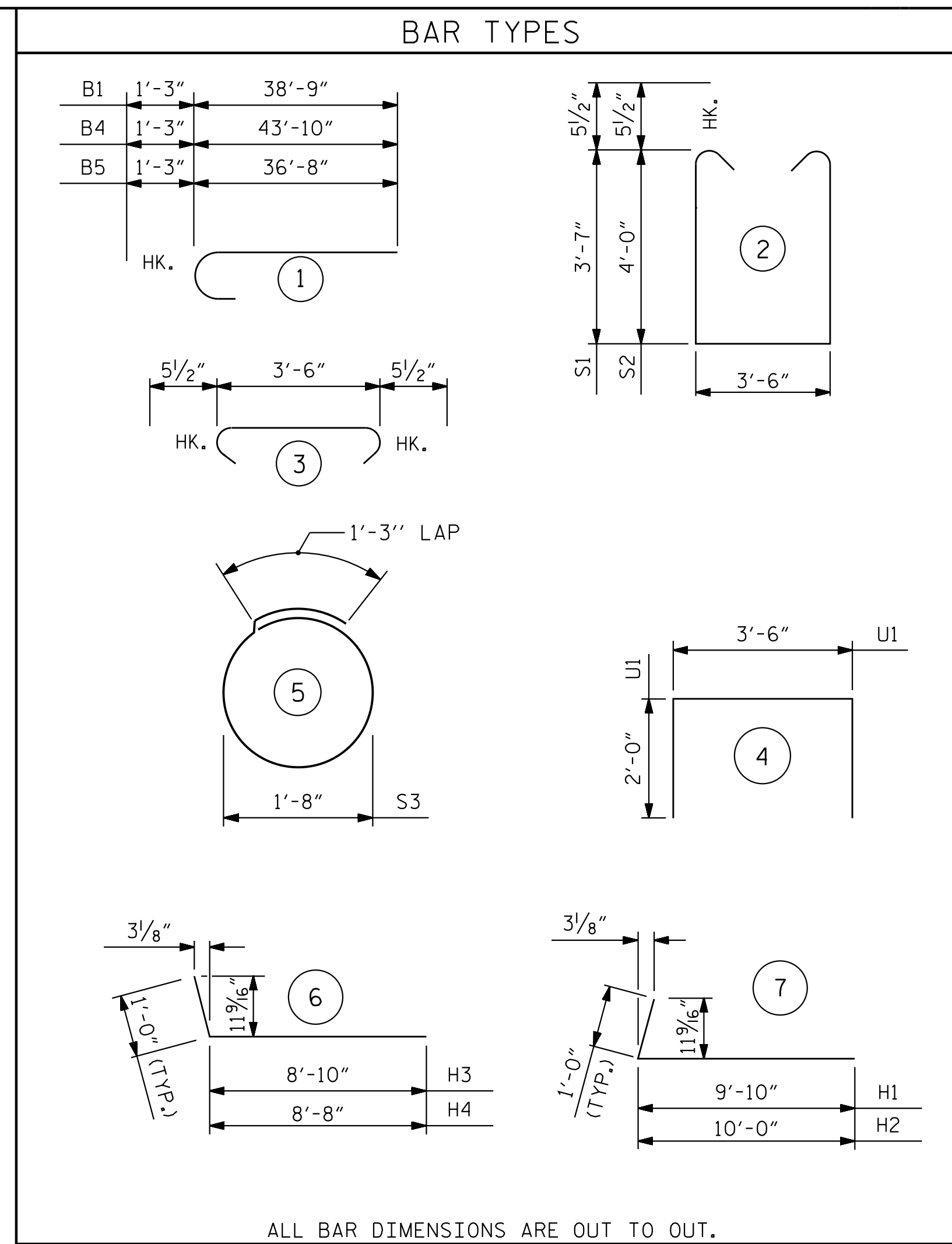
BAGGED STONE SHALL REMAIN IN PLACE UNTIL THE ENGINEER DIRECTS THAT IT BE REMOVED. THE CONTRACTOR SHALL REMOVE AND DISPOSE OF SILT ACCUMULATIONS AT BAGGED STONE WHEN SO DIRECTED BY THE ENGINEER. BAGS SHALL BE REMOVED AND REPLACED WHENEVER THE ENGINEER DETERMINES THAT THEY HAVE DETERIORATED AND LOST THEIR EFFECTIVENESS.

NO SEPARATE PAYMENT WILL BE MADE FOR THIS WORK AND THE ENTIRE COST OF THIS WORK SHALL BE INCLUDED IN THE UNIT CONTRACT PRICE BID FOR THE SEVERAL PAY ITEMS.

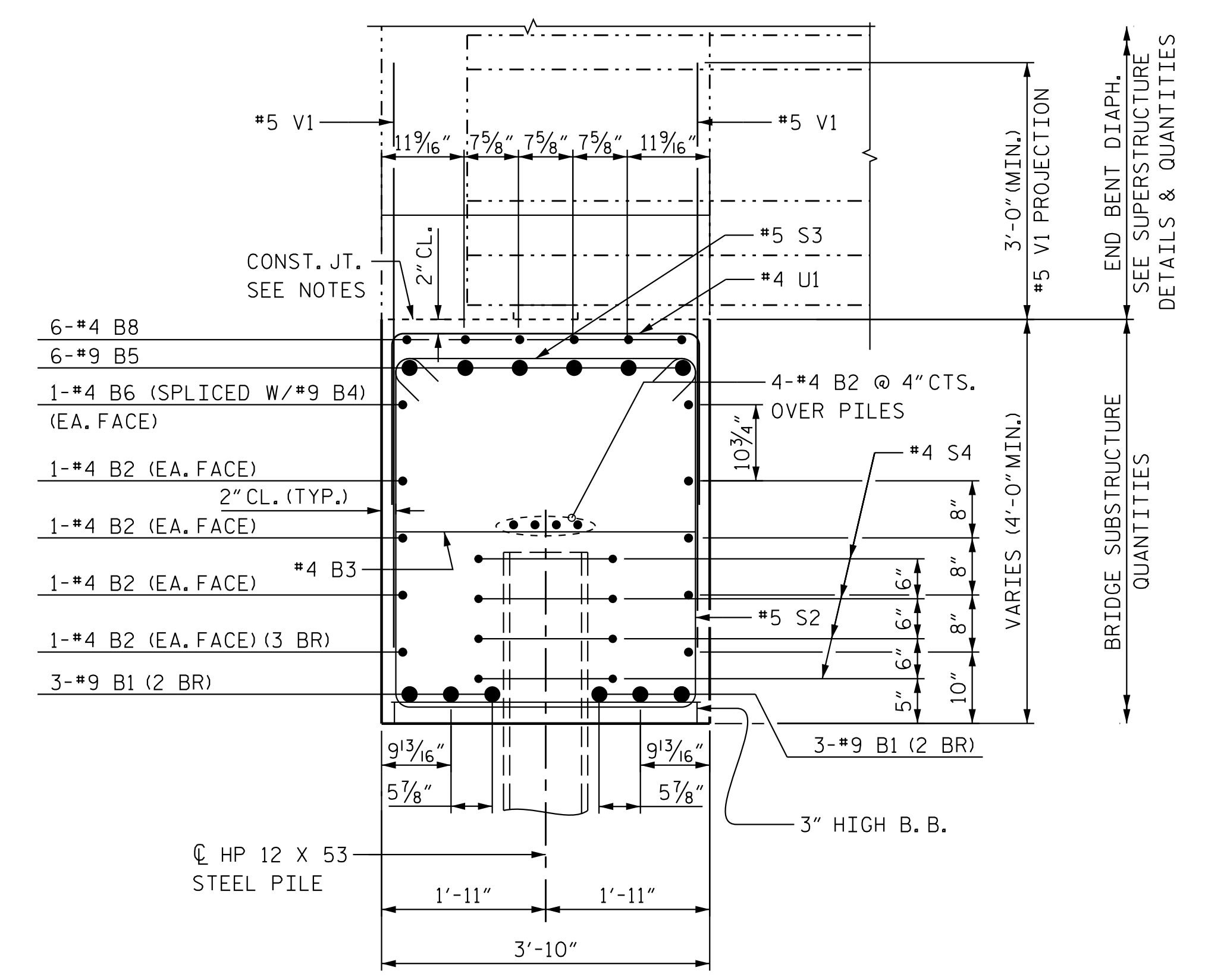
TEMPORARY DRAINAGE AT END BENT



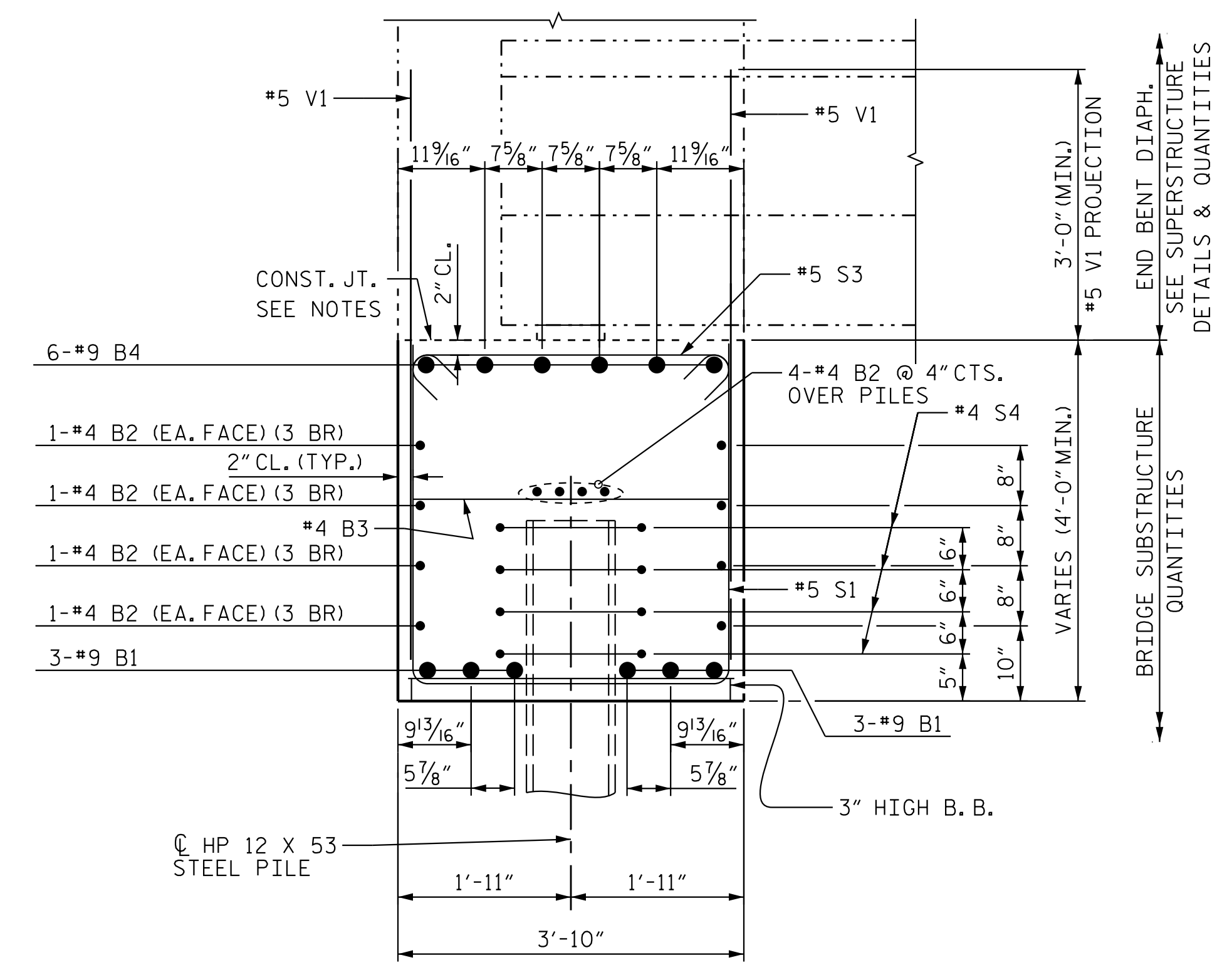
PILE SPLICE DETAILS



BILL OF MATERIAL					
END BENT 1					
BAR	NO.	SIZE	TYPE	LENGTH	WEIGHT
B1	12	#9	1	40'-0"	1632
B2	36	#4	STR	25'-5"	612
B3	20	#4	STR	3'-6"	47
B4	6	#9	1	45'-1"	920
B5	6	#9	1	37'-11"	774
B6	2	#4	STR	30'-0"	41
B7	6	#4	STR	12'-3"	50
B8	6	#4	STR	16'-7"	66
H1	15	#5	7	10'-10"	170
H2	15	#5	7	11'-0"	173
H3	14	#5	6	9'-10"	144
H4	14	#5	6	9'-8"	142
K10	20	#4	STR	4'-9"	64
K11	8	#4	STR	3'-9"	21
S1	38	#5	2	11'-7"	460
S2	41	#5	2	12'-5"	531
S3	70	#5	3	4'-5"	323
S4	36	#4	5	6'-6"	157
U1	19	#4	4	7'-6"	96
V1	118	#5	STR	6'-10"	842
V2	28	#5	STR	9'-10"	288
V3	24	#5	STR	8'-11"	224
REINFORCING STEEL					LBS. 7,778
CLASS A CONCRETE BREAKDOWN:					
POUR #1: CAP, COLLARS, ETC.				C.Y.	49.1
POUR #2: BACKWALL				C.Y.	4.6
CLASS A CONCRETE TOTAL				C.Y.	53.7
HP12X53 PILES					
NO. 9				FT.	675.00
PILE DRIVING EQUIPMENT					
SETUP FOR STEEL PILES				EA.	9



SECTION A-A
SEE "END BENT 1" SHEET 1 OF 3



SECTION B-B
SEE "END BENT 1" SHEET 1 OF 3

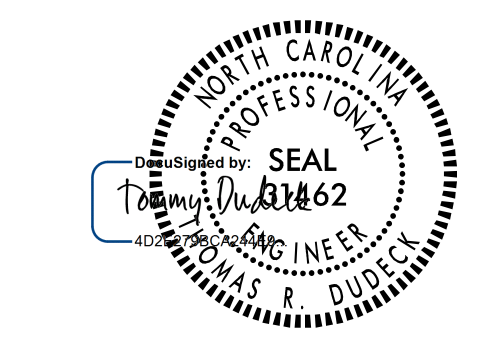
NOTES

TOP SURFACE AREAS OF THE END BENT CAP SHALL BE KEPT CLEAN AND FREE OF LAITANCE.

ROUGH FLOAT AND ROUGHEN THE TOP OF THE END BENT CAP TO PROVIDE MIN. SURFACE AMPLITUDE OF 1/4", EXCEPT UNDER BEARING AREAS.

2 BR DENOTES 2 BAR RUN.

3 BR DENOTES 3 BAR RUN.



PROJECT NO. U-2525C
GUILFORD COUNTY
STATION: 337+20.09 -L-

SHEET 3 OF 3

STATE OF NORTH CAROLINA
DEPARTMENT OF TRANSPORTATION
RALEIGH
SUBSTRUCTURE
END BENT 1 DETAILS
(RL)

REVISIONS						SHEET NO.	
NO.	BY:	DATE:	NO.	BY:	DATE:	S5-26	
1			3			TOTAL SHEETS 38	
2			4				

DOCUMENT NOT CONSIDERED FINAL UNLESS ALL SIGNATURES COMPLETED

STR. #5

1/12/2018 5:49:45AM J. Geille
U:\Structures\Drawings\Site 5\Final\RL U-2525C-SD.E-1.1.dgn

Stantec Consulting Services Inc.
801 Jones Franklin Road
Suite 300
Raleigh, NC 27606
Tel. (919) 851-6866
Fax. (919) 851-7024
www.stantec.com
License No. F-0672

DRAWN BY: J. B. GEILLE DATE: 01-27-17
CHECKED BY: V. E. FRAGA DATE: 05-31-17
DESIGN ENGINEER OF RECORD: T. R. DUDECK DATE: 01/16/18