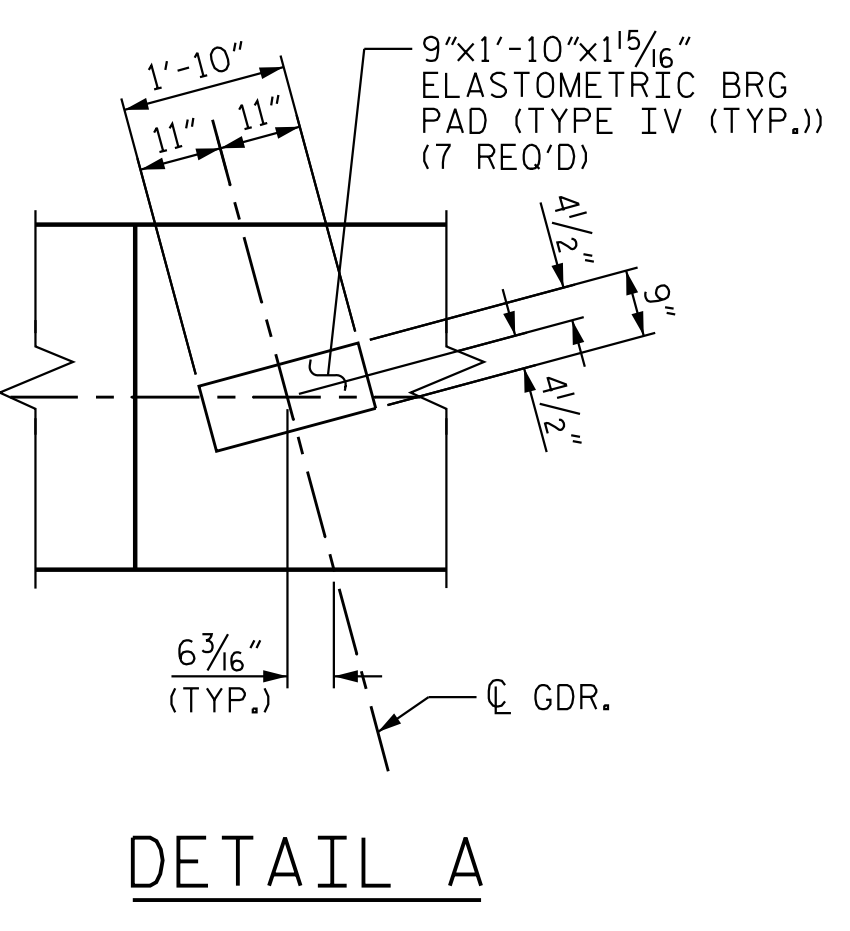
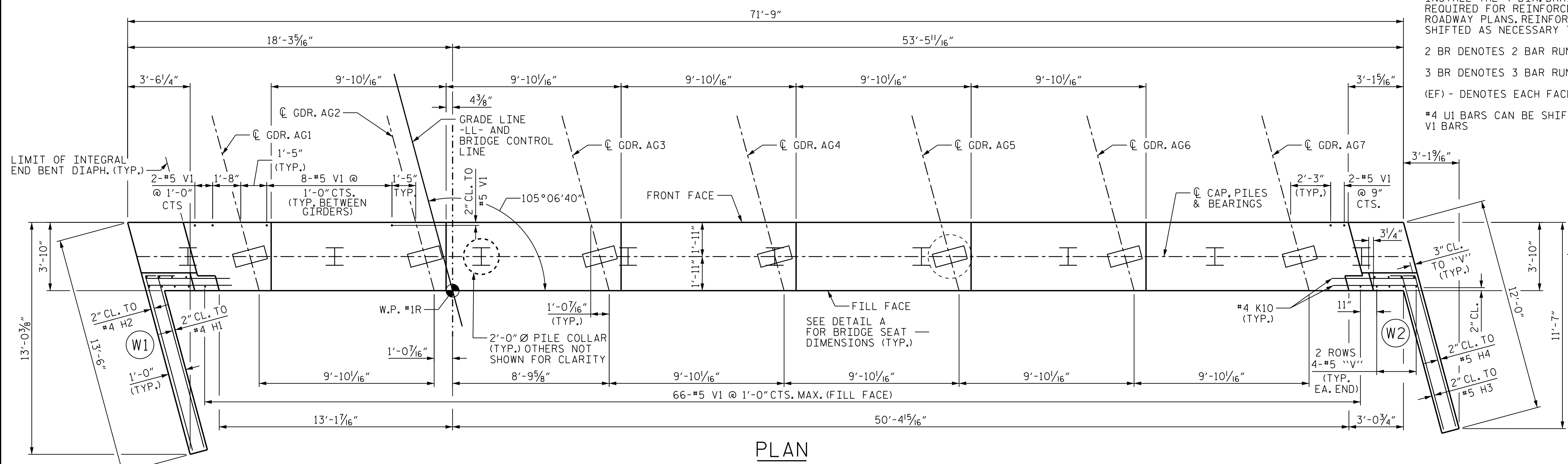
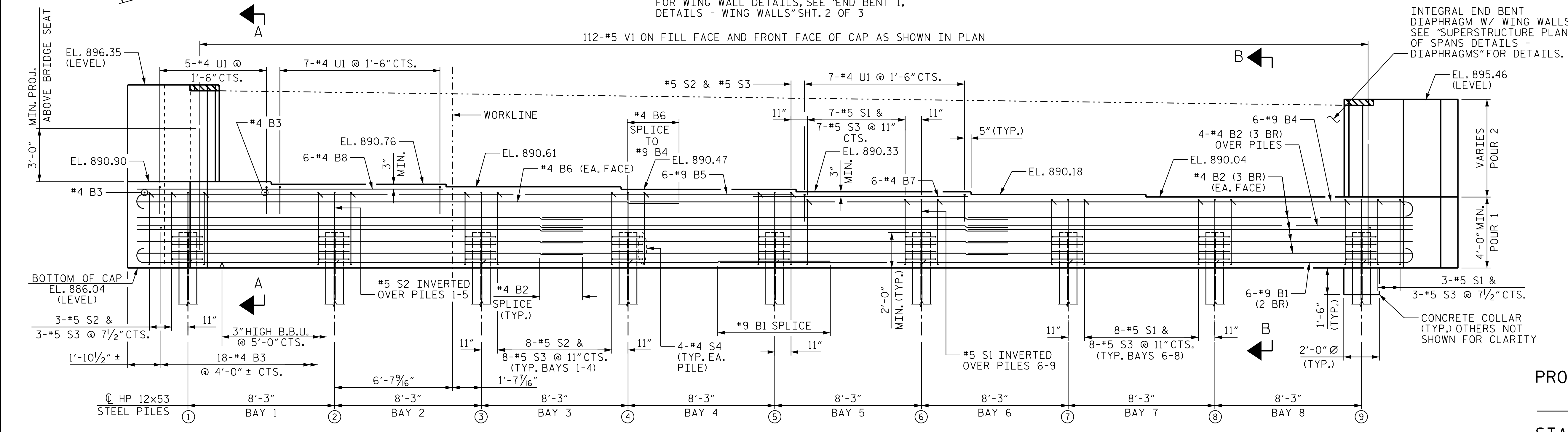


NOTES
 INSTALL THE 4" DIA. DRAIN PIPE THROUGH THE WING WALL AS REQUIRED FOR REINFORCED BRIDGE APPROACH FILLS. SEE THE ROADWAY PLANS. REINFORCING STEEL IN THE WING WALL MAY BE SHIFTED AS NECESSARY TO CLEAR THE DRAIN PIPE.
 2 BR DENOTES 2 BAR RUN
 3 BR DENOTES 3 BAR RUN
 (EF) - DENOTES EACH FACE OF WING WALL
 #4 UI BARS CAN BE SHIFTED AS NECESSARY TO CLEAR #5 V1 BARS



PLAN
 FOR WING WALL DETAILS, SEE "END BENT 1, DETAILS - WING WALLS" SHT. 2 OF 3



ELEVATION

SPLICE LENGTH	
#9 B1	6'-3"
#4 B2, B6	2'-5"

PROJECT NO. U-2525C
 GUILFORD COUNTY
 STATION: 337+20.09 -L-

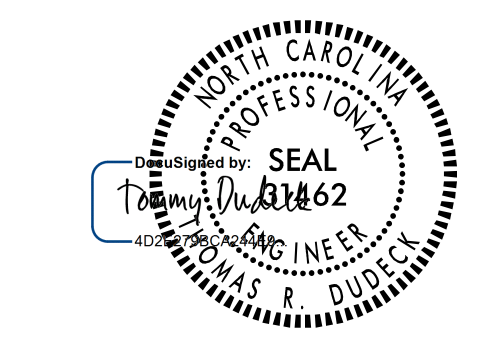
SHEET 1 OF 3

STATE OF NORTH CAROLINA
 DEPARTMENT OF TRANSPORTATION
 RALEIGH

SUBSTRUCTURE

END BENT 1

(RL)



REVISIONS						SHEET NO. S5-24
NO.	BY:	DATE:	NO.	BY:	DATE:	
1			3			TOTAL SHEETS 38
2			4			

Stantec Consulting Services Inc.
 801 Jones Franklin Road
 Suite 300
 Raleigh, NC 27606
 Tel. (919) 851-6866
 Fax. (919) 851-7024
 www.stantec.com
 License No. F-0672

DRAWN BY: J. B. GEILE DATE: 01-27-17
 CHECKED BY: V. E. FRAGA DATE: 05-31-17
 DESIGN ENGINEER OF RECORD: T.R. DUDECK DATE: 01/16/18

DOCUMENT NOT CONSIDERED FINAL UNLESS ALL SIGNATURES COMPLETED