

0.6" Ø L. R. GRADE 270 STRANDS

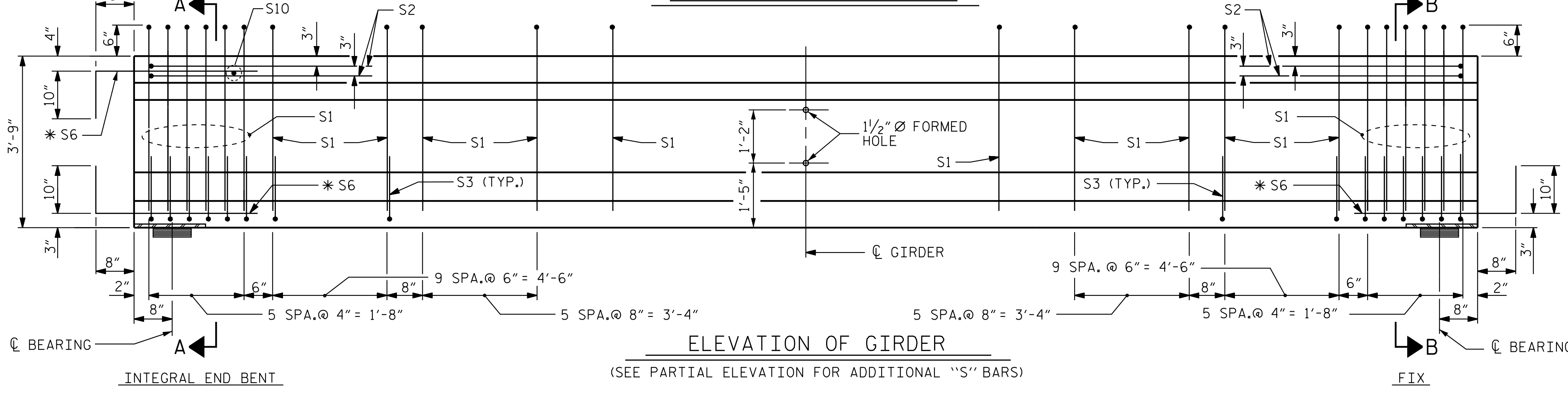
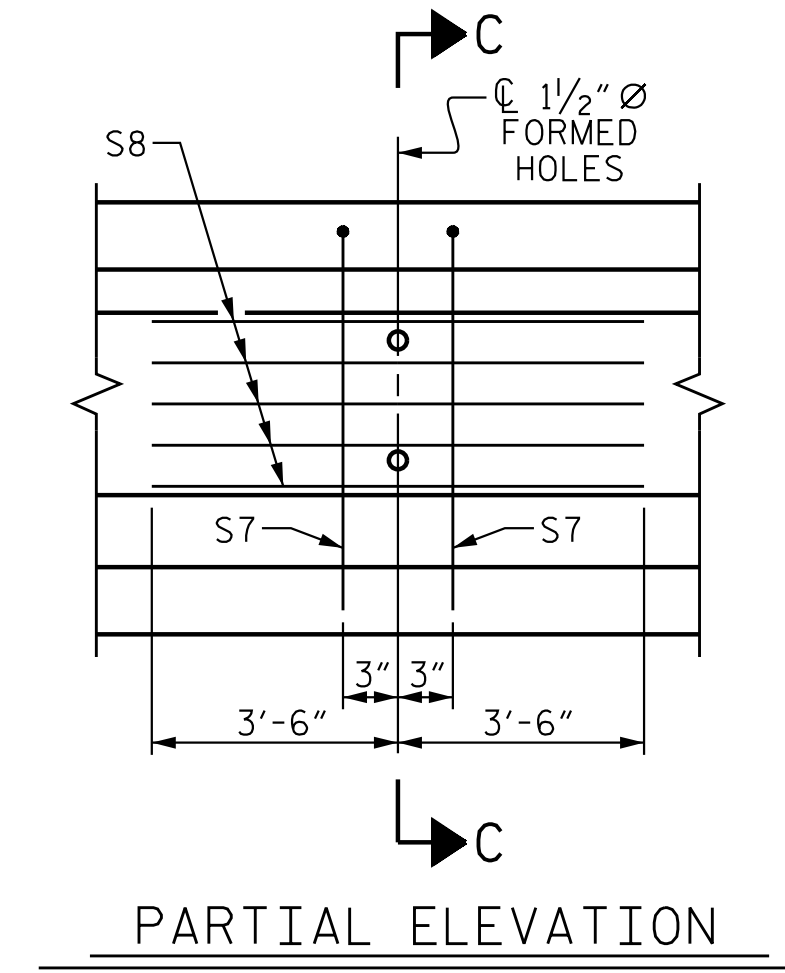
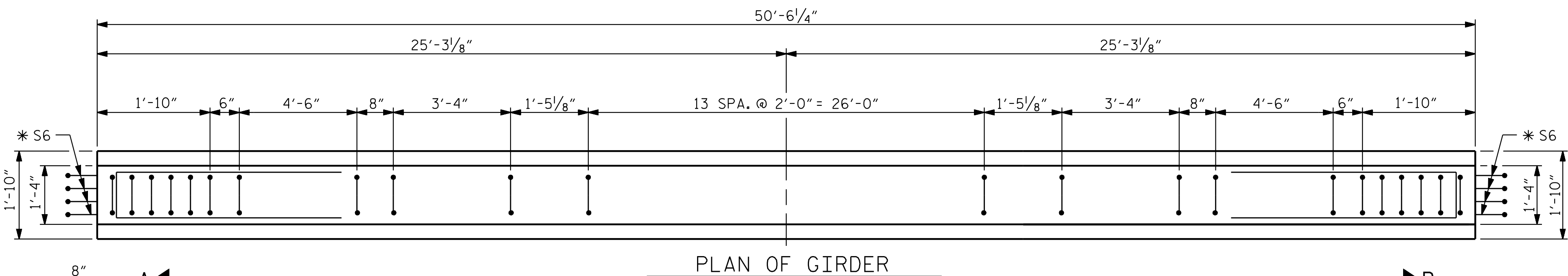
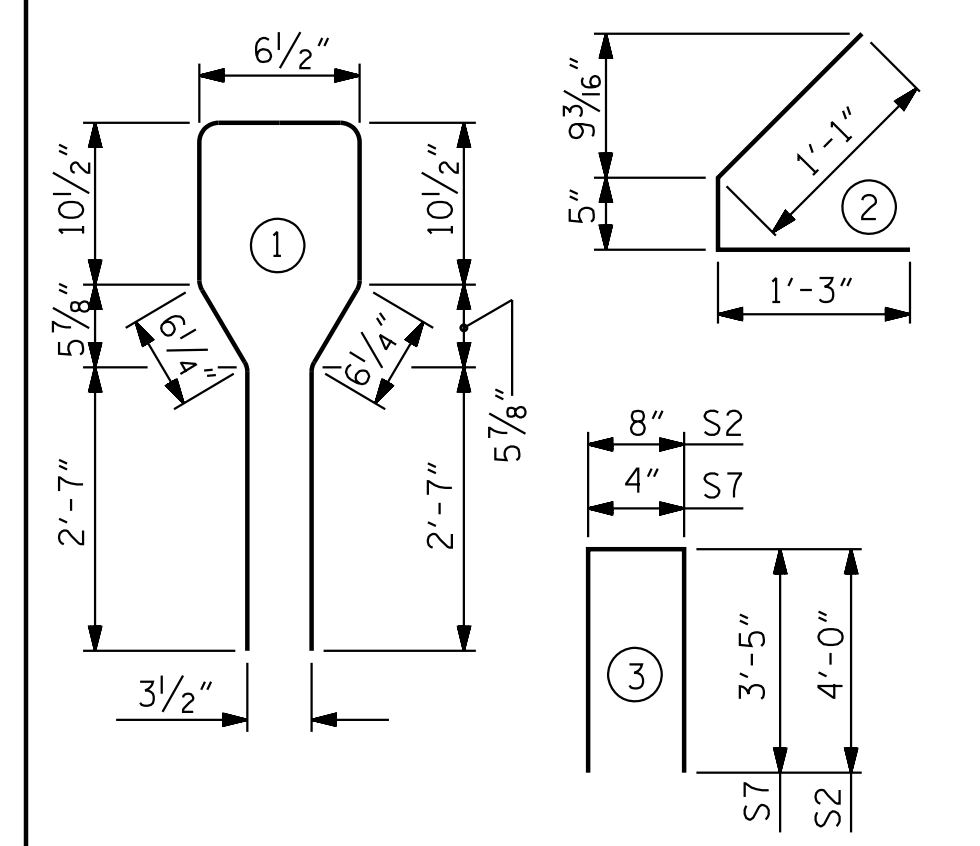
AREA (SQ. INCHES)	ULTIMATE STRENGTH (LBS. PER STRAND)	APPLIED PRESTRESS (LBS. PER STRAND)
0.217	58,600	43,950

REINFORCING STEEL FOR ONE GIRDER

BAR	NUMBER	SIZE	TYPE	LENGTH	WEIGHT
S1	58	#4	1	8'-6"	330
S2	4	#4	3	8'-8"	24
S3	64	#4	2	2'-9"	118
*S6	12	#5	STR	3'-8"	46
S7	2	#5	3	7'-2"	15
S8	5	#4	STR	7'-0"	24
S10	1	#3	STR	1'-0"	1

* NOTE: S6 BARS SHALL BE BENT BEFORE SHIPMENT. HEAT BENDING SHALL NOT BE ALLOWED.

BAR TYPES
ALL BAR DIMENSIONS ARE OUT-TO-OUT



QUANTITIES FOR ONE GIRDER

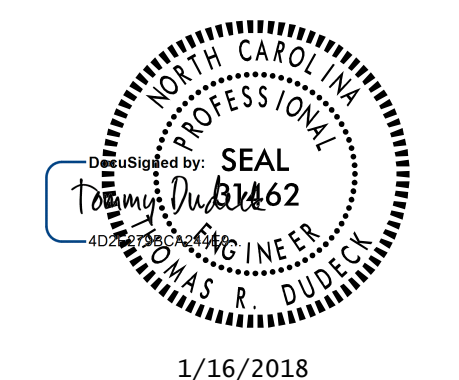
	REINFORCING STEEL LB.	5,000 PSI CONCRETE C.Y.	0.6" Ø L. R. STRANDS No.
ALL GIRDERS	558	7.3	12

GIRDERS REQUIRED

NUMBER	LENGTH	TOTAL LENGTH
7	50'-6 1/4"	353'-7 3/4"

PROJECT NO. U-2525C
GUILFORD COUNTY
STATION: 337+20.09 -L-

SHEET 1 OF 4
STATE OF NORTH CAROLINA
DEPARTMENT OF TRANSPORTATION
RALEIGH
STANDARD
AASHTO TYPE III
PRESTRESSED CONCRETE GIRDER
CONTINUOUS FOR LIVE LOAD
(SPAN A)



1/16/2018
DOCUMENT NOT CONSIDERED FINAL UNLESS ALL SIGNATURES COMPLETED

REVISIONS

NO.	BY:	DATE:	NO.	BY:	DATE:
1			3		
2			4		

SHEET NO. S5-12
TOTAL SHEETS 38

Stantec Consulting Services Inc.
801 Jones Franklin Road
Suite 300
Raleigh, NC 27606
Tel. (919) 851-6986
Fax. (919) 851-7024
www.stantec.com
License No. F-0672

ASSEMBLED BY: N. D'AIUTO DATE: 01/25/17
CHECKED BY: V.E. FRAGA DATE: 05/18/17

DRAWN BY: ELR 8/91
CHECKED BY: GRP 8/91

REV. 5/1/06R TLA/GM
REV. 10/1/11 MAA/GM
REV. 1/15 MAA/TMG

DESIGN ENGINEER OF RECORD: T.R. DUDECK DATE: 01/16/18

1/12/2018 5:49:05 PM jpeelle
U:\Structures\Drawings\Site 5\Final\RL U-2525C_SD_PCG.Ldgn