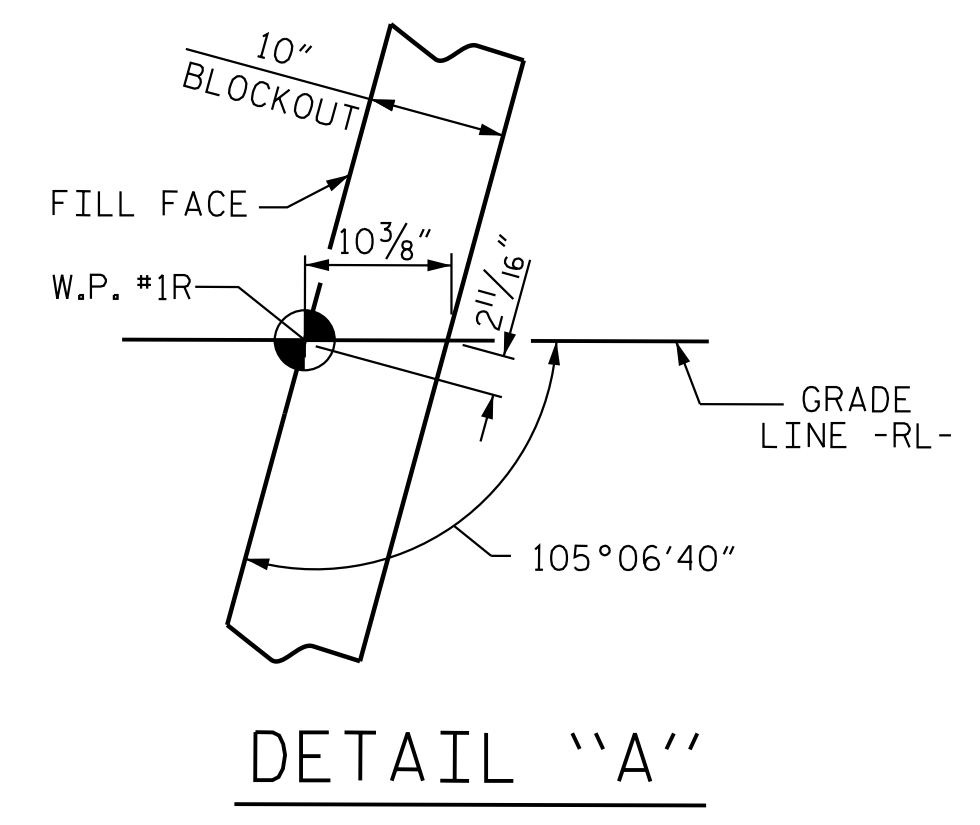
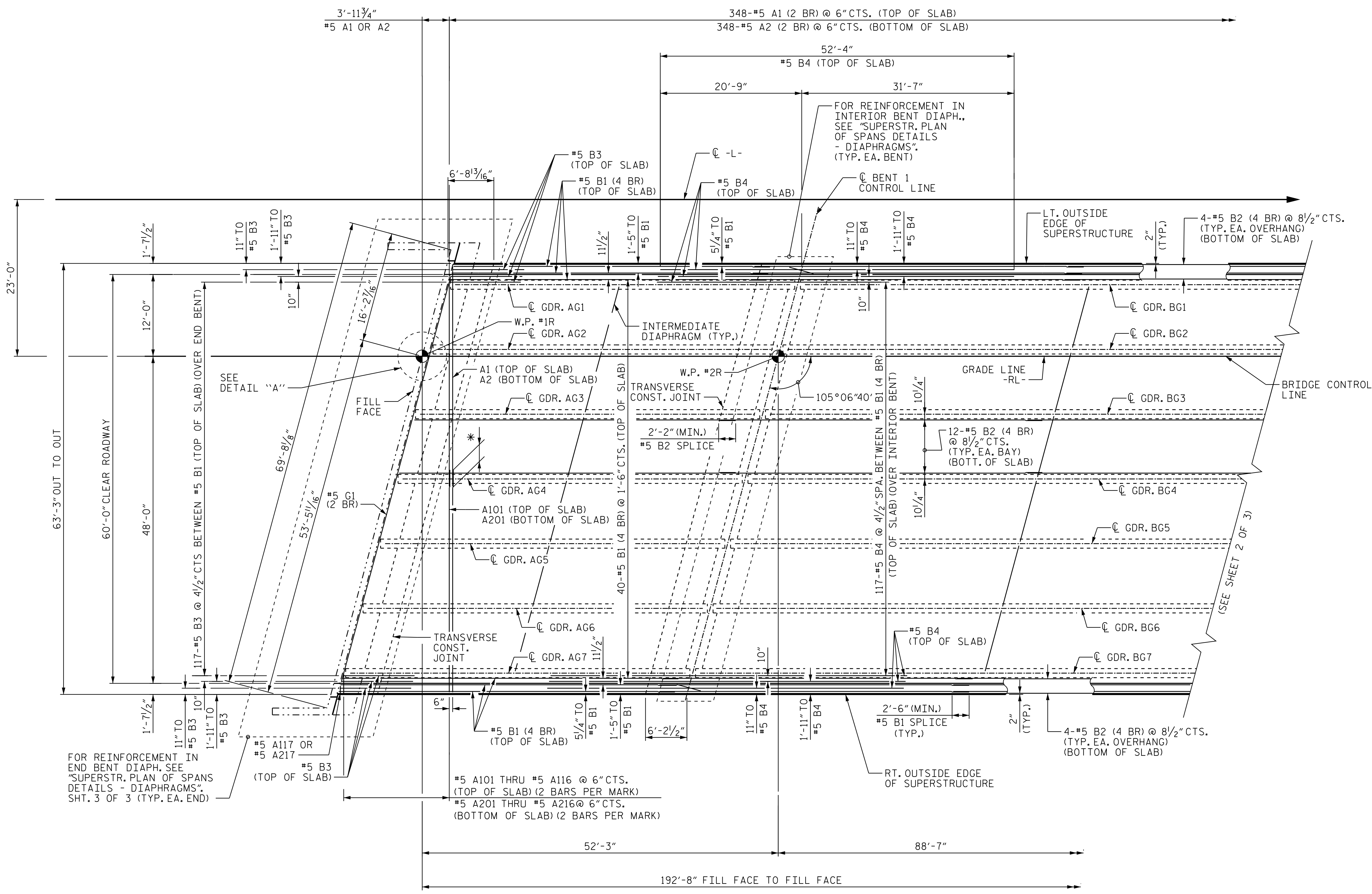
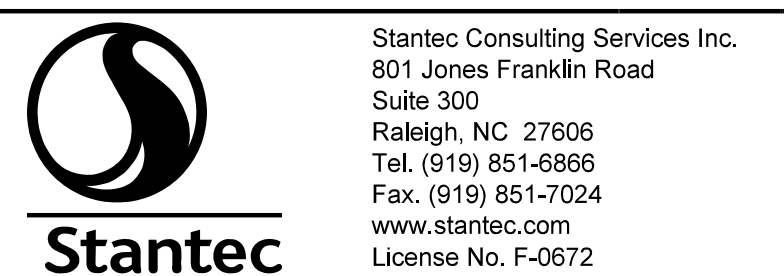


1/12/2018 5:48:55 PM jgeille  
U:\Structures\Drawing\Site 5\Final\RL U-2525C-SD\_S-1.dgn

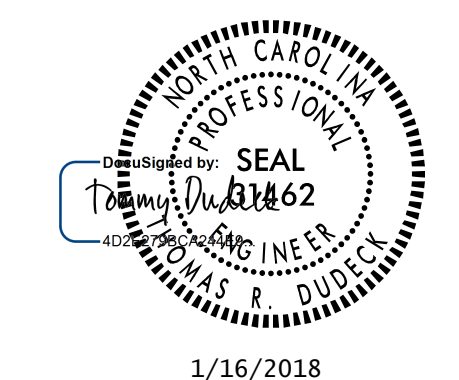


**PLAN OF SPANS**  
**(SPAN A AND PART OF SPAN B)**

(2 BR) DENOTES 2 BAR RUN, (4 BR) DENOTES 4 BAR RUN.  
FOR BARRIER RAIL DETAILS AND REINFORCING STEEL, SEE "CONCRETE BARRIER RAIL", SHEET S4-21.  
FOR POUR SEQUENCE SEE SHEET "BILL OF MATERIALS" SHEET S4-23.  
FOR TRANSVERSE CONSTRUCTION JOINT DETAIL, SEE "PLAN OF SPANS SHEET 2 OF 3", SHEET S4-9.  
\* 2'-6" (MIN.) #5 A1 LAP SPLICE  
2'-2" (MIN.) #5 A2 LAP SPLICE



DRAWN BY: J. B. GEILE DATE: 02-02-17  
CHECKED BY: V. E. FRAGA DATE: 05-18-17  
DESIGN ENGINEER OF RECORD: T. R. DUDECK DATE: 01/16/18



DOCUMENT NOT CONSIDERED FINAL UNLESS ALL SIGNATURES COMPLETED

PROJECT NO. U-2525C  
GUILFORD COUNTY  
STATION: 337+20.09 -L-

SHEET 1 OF 3

STATE OF NORTH CAROLINA  
DEPARTMENT OF TRANSPORTATION  
RALEIGH  
SUBSTRUCTURE  
PLAN OF SPANS  
(RL)

REVISIONS						SHEET NO. S5-8
NO.	BY:	DATE:	NO.	BY:	DATE:	
1			3			TOTAL SHEETS 38
2			4			

STR. #5