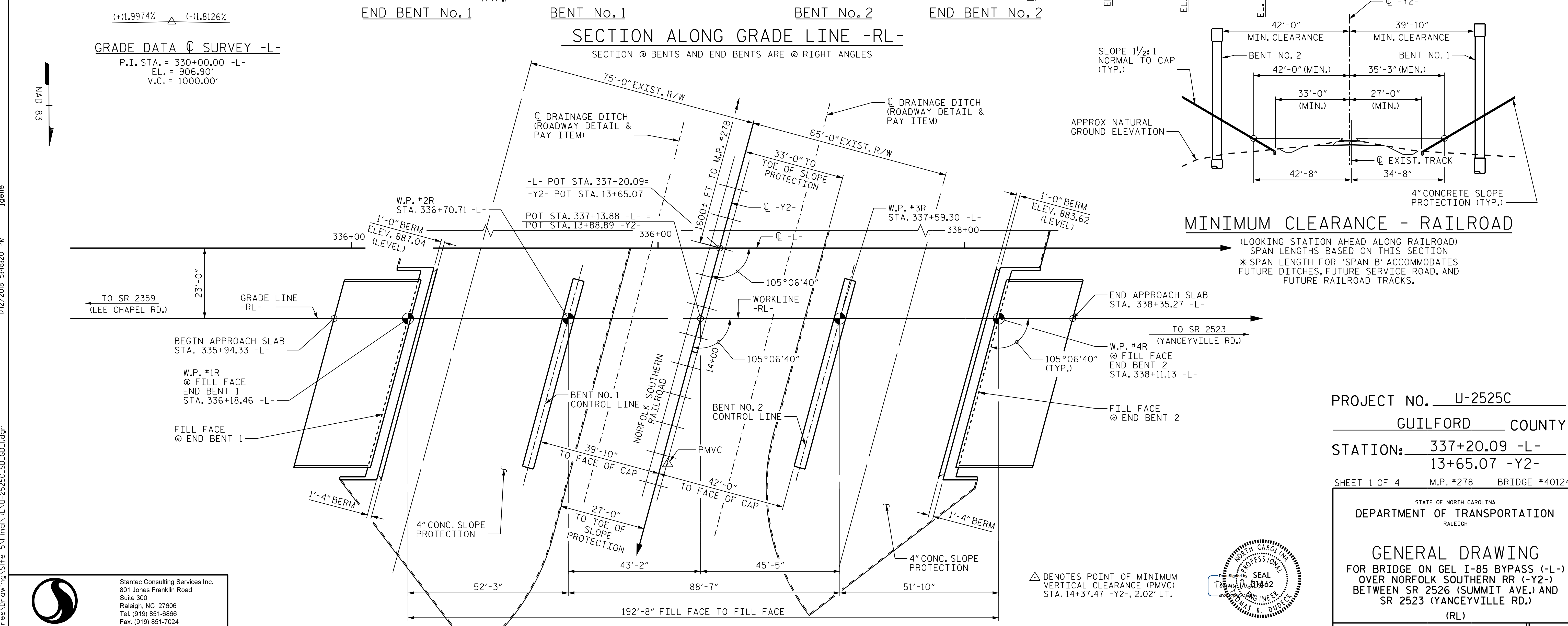


TOP OF RAIL ELEVATIONS		
TRACK STATION	LEFT RAIL	RIGHT RAIL
12+50.00	851.96	851.93
12+75.00	852.02	852.01
13+00.00	852.09	852.10
13+25.00	852.15	852.17
13+50.00	852.24	852.25
13+75.00	852.31	852.33
14+00.00	852.41	852.41
14+25.00	852.51	852.49
14+50.00	852.54	852.51

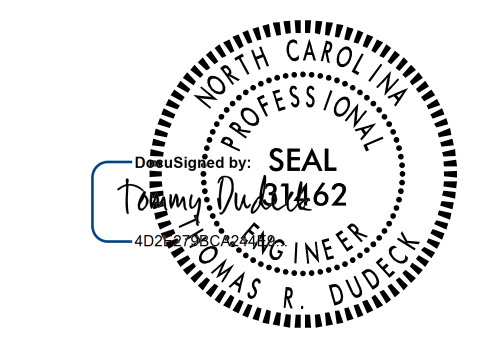


MINIMUM CLEARANCE - RAILROAD

(LOOKING STATION AHEAD ALONG RAILROAD)
 SPAN LENGTHS BASED ON THIS SECTION
 * SPAN LENGTH FOR 'SPAN B' ACCOMMODATES
 FUTURE DITCHES, FUTURE SERVICE ROAD, AND
 FUTURE RAILROAD TRACKS.

Stantec
 Stantec Consulting Services Inc.
 801 Jones Franklin Road
 Suite 300
 Raleigh, NC 27606
 Tel. (919) 851-6866
 Fax. (919) 851-7024
 www.stantec.com
 License No. F-0672

DRAWN BY: J. E. HAGENBUSH DATE: 05-09-16
 CHECKED BY: V. E. FRAGA DATE: 05-17-17
 DESIGN ENGINEER OF RECORD: T. R. DUDECK DATE: 01/16/18



PROJECT NO. U-2525C
 GUILFORD COUNTY
 STATION: 337+20.09 -L-
 13+65.07 -Y2-

SHEET 1 OF 4 M.P. #278 BRIDGE #401244

STATE OF NORTH CAROLINA
 DEPARTMENT OF TRANSPORTATION
 RALEIGH

GENERAL DRAWING
 FOR BRIDGE ON GEL I-85 BYPASS (-L-)
 OVER NORFOLK SOUTHERN RR (-Y2-)
 BETWEEN SR 2526 (SUMMIT AVE.) AND
 SR 2523 (YANCEYVILLE RD.)
 (RL)

REVISIONS						SHEET NO. S5-1
NO.	BY:	DATE:	NO.	BY:	DATE:	
1			3			TOTAL SHEETS 38
2			4			

DOCUMENT NOT CONSIDERED
 FINAL UNLESS ALL
 SIGNATURES COMPLETED