

MINIMUM OF 3- ONE CUBIC FOOT BAGS OF #78M STONE. BAGS SHALL BE OF POROUS FABRIC, SECURELY TIED.

6" (MIN.) PIPE FOR DRAINAGE

GRADE TO DRAIN

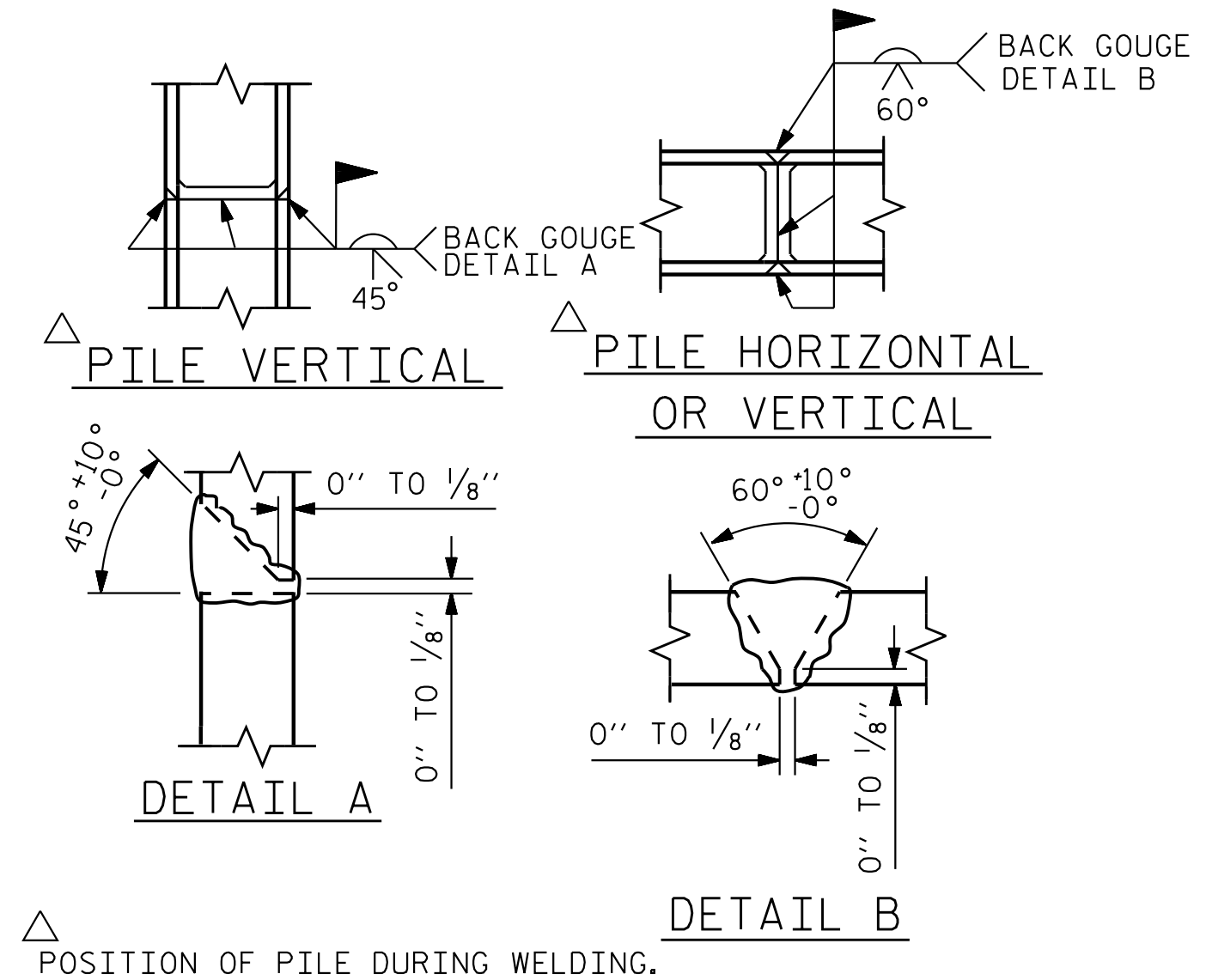
TOE OF SLOPE

BAGGED STONE AND PIPE SHALL BE PLACED IMMEDIATELY AFTER COMPLETION OF END BENT EXCAVATION. PIPE MAY BE EITHER CONCRETE, CORRUGATED STEEL, CORRUGATED ALUMINUM ALLOY, OR CORRUGATED PLASTIC. PERFORATED PIPE WILL NOT BE ALLOWED.

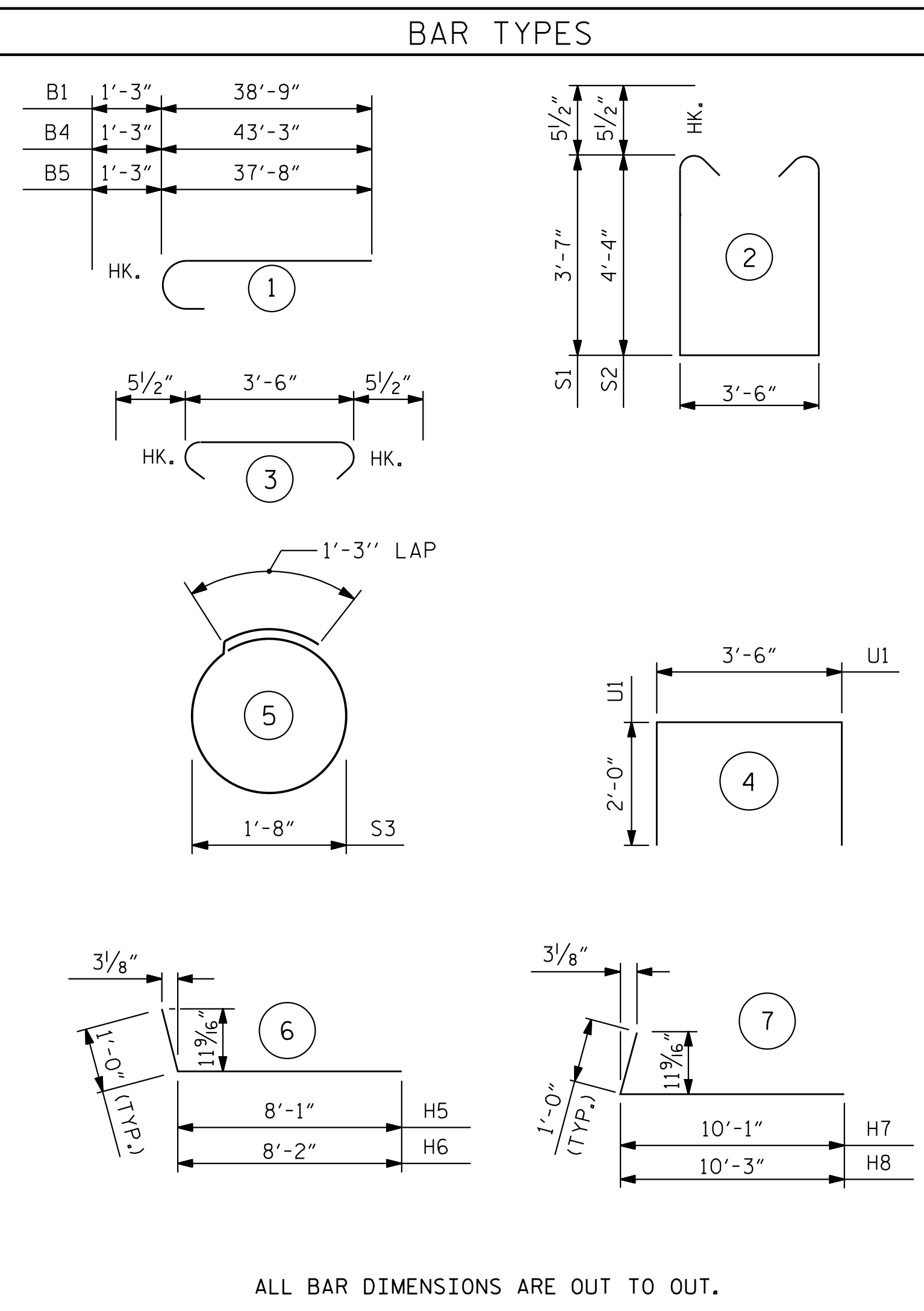
BAGGED STONE SHALL REMAIN IN PLACE UNTIL THE ENGINEER DIRECTS THAT IT BE REMOVED. THE CONTRACTOR SHALL REMOVE AND DISPOSE OF SILT ACCUMULATIONS AT BAGGED STONE WHEN SO DIRECTED BY THE ENGINEER. BAGS SHALL BE REMOVED AND REPLACED WHENEVER THE ENGINEER DETERMINES THAT THEY HAVE DETERIORATED AND LOST THEIR EFFECTIVENESS.

NO SEPARATE PAYMENT WILL BE MADE FOR THIS WORK AND THE ENTIRE COST OF THIS WORK SHALL BE INCLUDED IN THE UNIT CONTRACT PRICE BID FOR THE SEVERAL PAY ITEMS.

TEMPORARY DRAINAGE AT END BENT

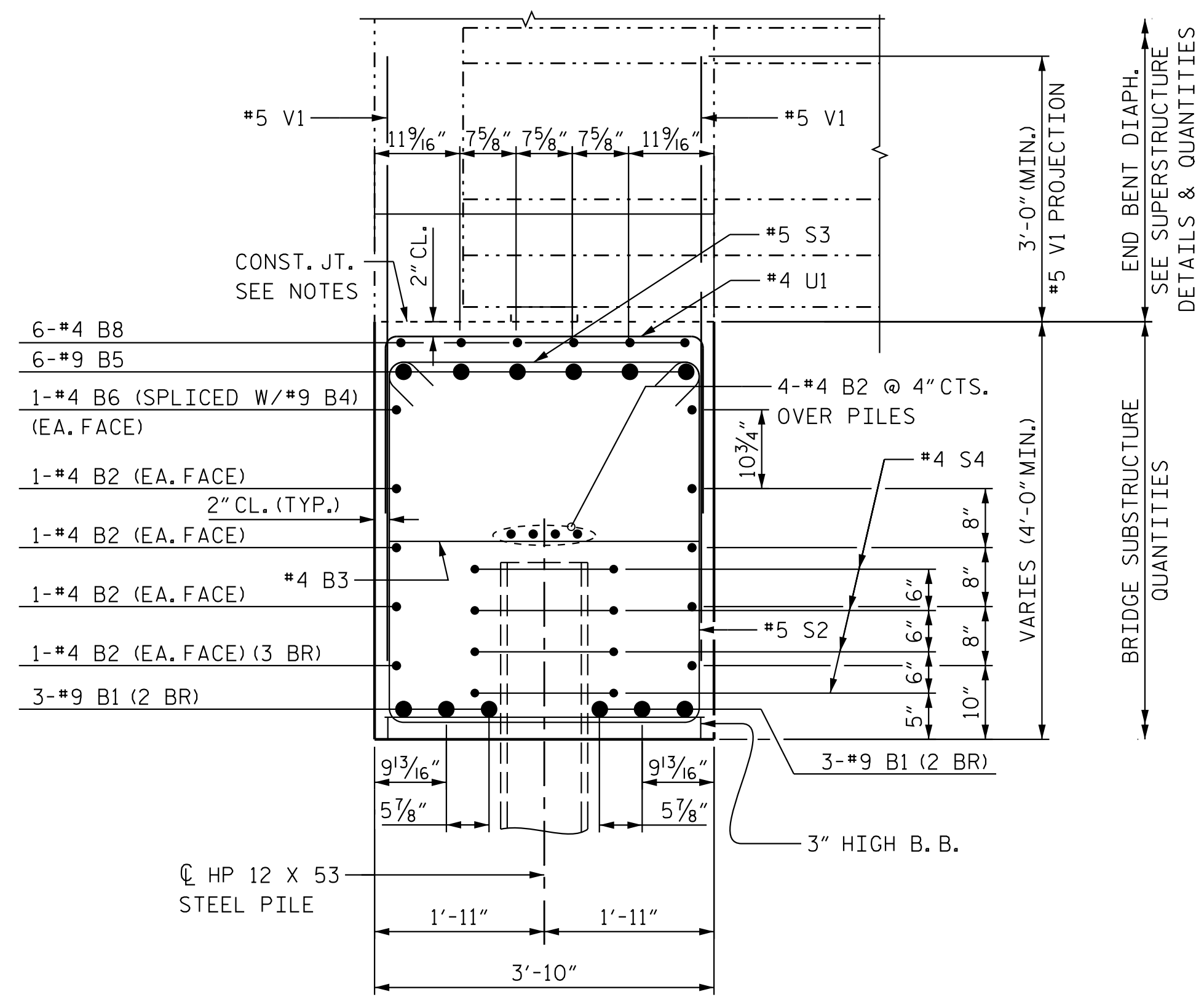


PILE SPLICE DETAILS



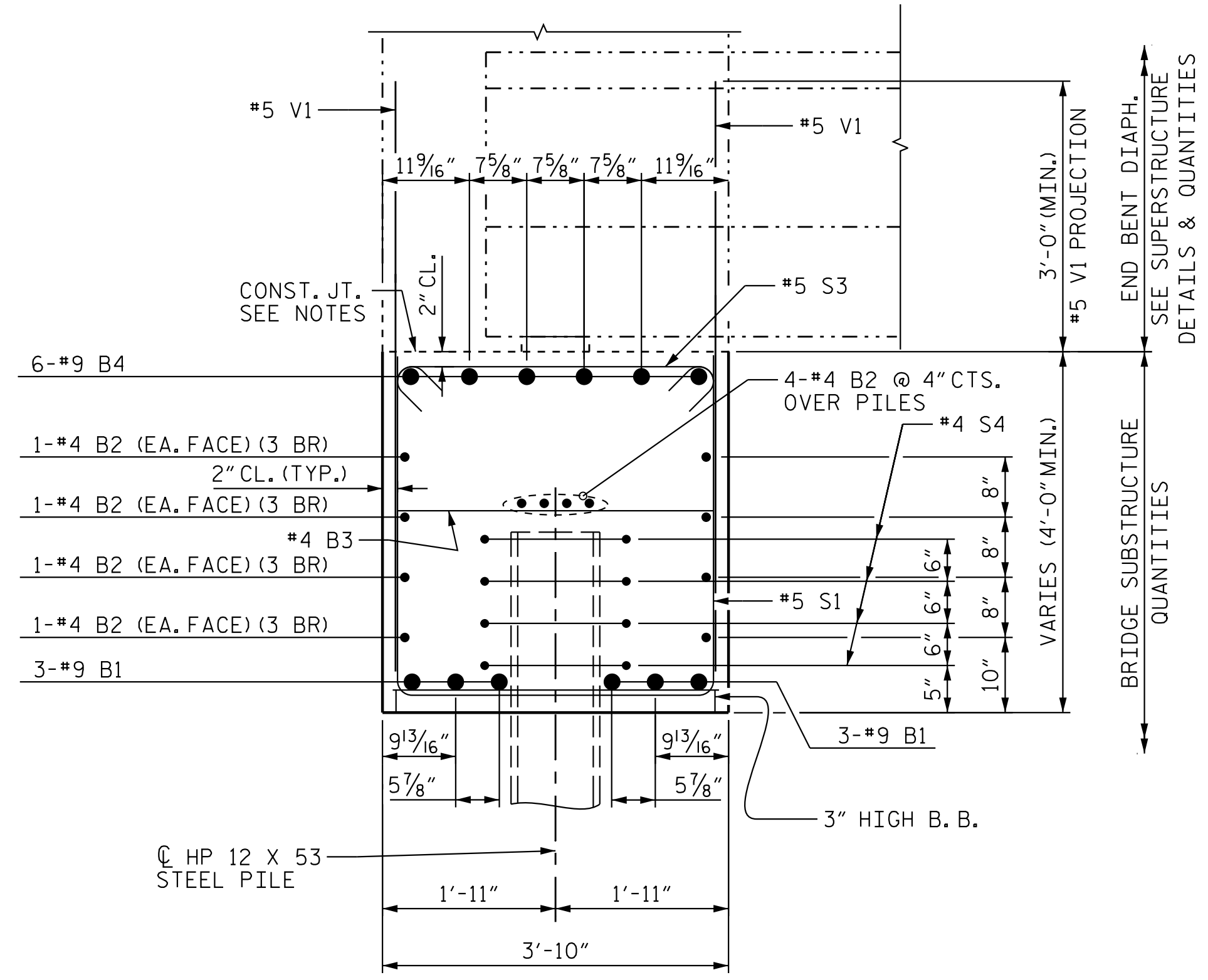
ALL BAR DIMENSIONS ARE OUT TO OUT.

BILL OF MATERIAL					
END BENT 2					
BAR	NO.	SIZE	TYPE	LENGTH	WEIGHT
B1	12	#9	1	40'-0"	1632
B2	36	#4	STR	25'-5"	612
B3	20	#4	STR	3'-6"	47
B4	6	#9	1	44'-6"	908
B5	6	#9	1	38'-11"	794
B6	2	#4	STR	31'-4"	42
B7	6	#4	STR	12'-3"	50
B8	6	#4	STR	26'-8"	107
B9	6	#4	STR	7'-0"	29
H5	13	#4	6	9'-4"	82
H6	13	#4	6	9'-2"	80
H7	16	#5	7	11'-1"	185
H8	16	#5	7	11'-3"	188
K10	20	#4	STR	4'-9"	64
K11	8	#4	STR	3'-9"	21
S1	38	#5	2	11'-7"	460
S2	41	#5	2	13'-1"	560
S3	70	#5	3	4'-5"	323
S4	36	#4	5	6'-6"	157
U1	27	#4	4	7'-6"	136
V1	118	#5	STR	6'-10"	842
V2	26	#5	STR	8'-8"	236
V3	30	#5	STR	10'-4"	324
REINFORCING STEEL					LBS. 7,879
CLASS A CONCRETE BREAKDOWN:					
POUR #1: CAP, COLLARS, ETC.				C.Y.	51.8
POUR #2: BACKWALL				C.Y.	4.6
CLASS A CONCRETE TOTAL					C.Y. 56.40
HP12X53 PILES					
NO. 9				FEET	630.00
PILE DRIVING EQUIPMENT					
SETUP FOR STEEL PILES				EA.	9



SECTION A-A

SEE "END BENT 1" SHEET 1 OF 3



SECTION B-B

SEE "END BENT 1" SHEET 1 OF 3

NOTES

TOP SURFACE AREAS OF THE END BENT CAP SHALL BE KEPT CLEAN AND FREE OF LAITANCE.

ROUGH FLOAT AND ROUGHEN THE TOP OF THE END BENT CAP TO PROVIDE MIN. SURFACE AMPLITUDE OF 1/4", EXCEPT UNDER BEARING AREAS.

2 BR DENOTES 2 BAR RUN.

3 BR DENOTES 3 BAR RUN.

PROJECT NO. U-2525C

GUILFORD COUNTY

STATION: 337+20.09 -L-

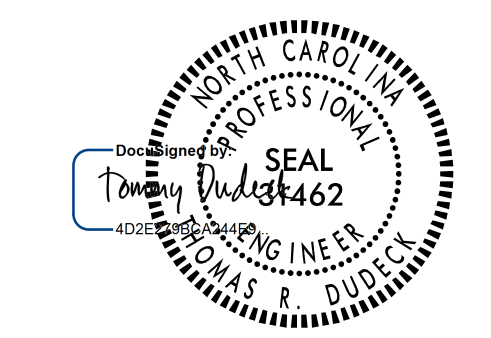
SHEET 3 OF 3

STATE OF NORTH CAROLINA
DEPARTMENT OF TRANSPORTATION
RALEIGH

SUBSTRUCTURE

END BENT 2 DETAILS

(LL)



1/16/2018

DOCUMENT NOT CONSIDERED FINAL UNLESS ALL SIGNATURES COMPLETED

REVISIONS						SHEET NO.
NO.	BY:	DATE:	NO.	BY:	DATE:	S4-35
1			3			TOTAL SHEETS 39
2			4			

STR. #4

1/12/2018 5:33:53 PM jgeile

U:\Structures\Drawings\Site 5\Final\LU-2525C-SD.E-2.dgn

Stantec Consulting Services Inc.
801 Jones Franklin Road
Suite 300
Raleigh, NC 27606
Tel. (919) 851-6866
Fax. (919) 851-7024
www.stantec.com
License No. F-0672

DRAWN BY: J. B. GEILE DATE: 01-27-17
CHECKED BY: V. E. FRAGA DATE: 03-17-17

DESIGN ENGINEER OF RECORD: T. R. DUDECK DATE: 01/16/18