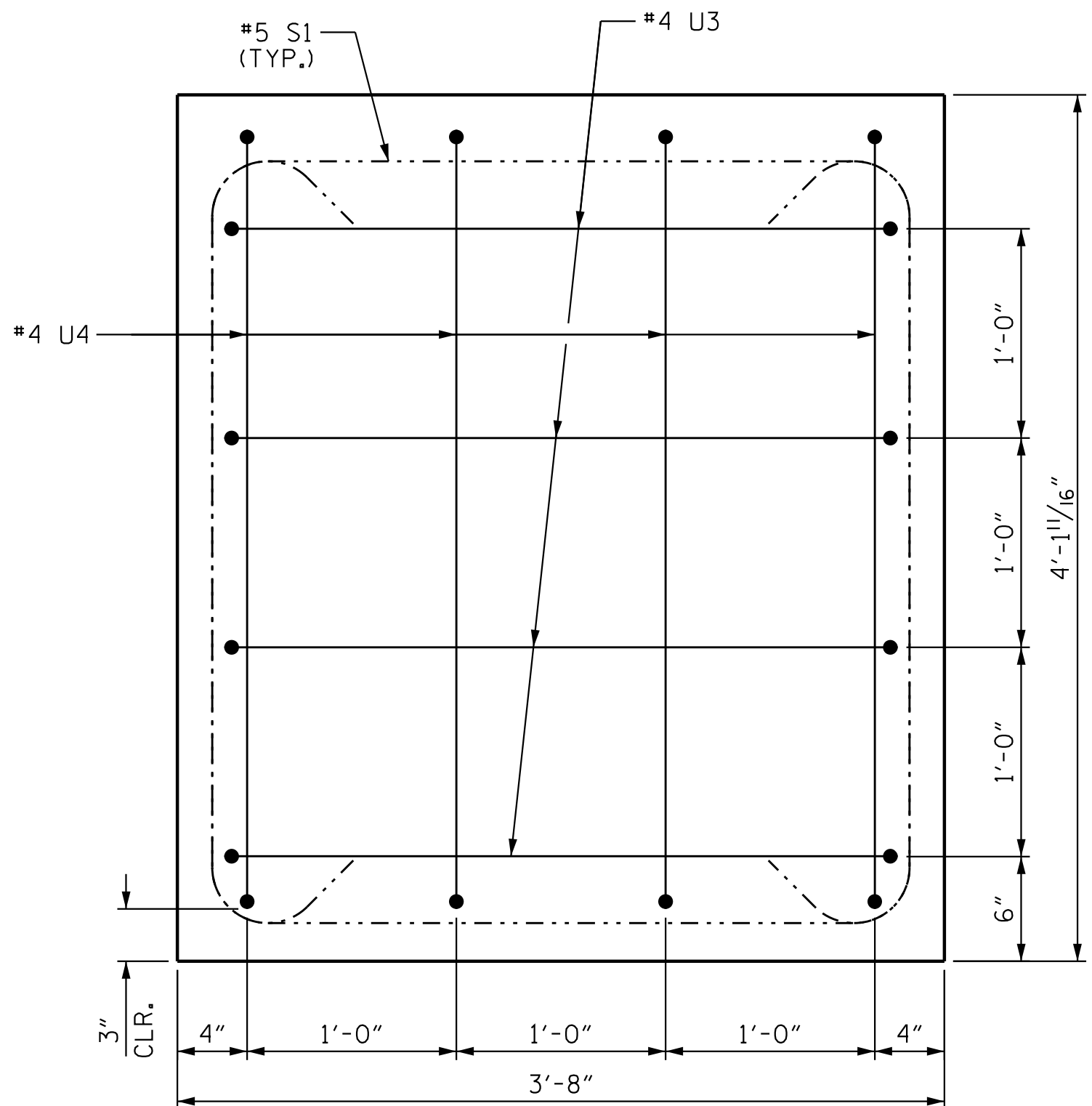
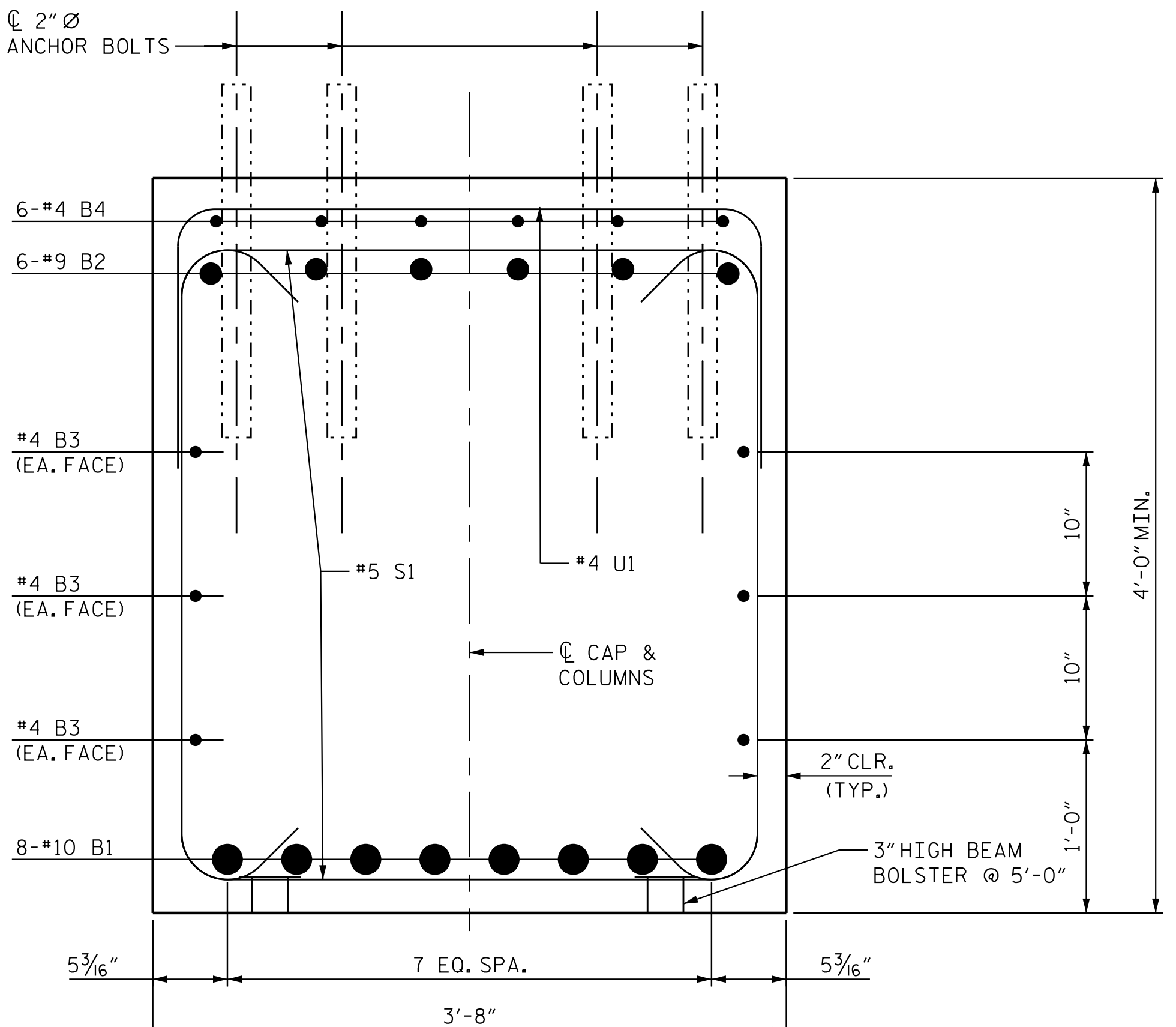


VIEW A-A



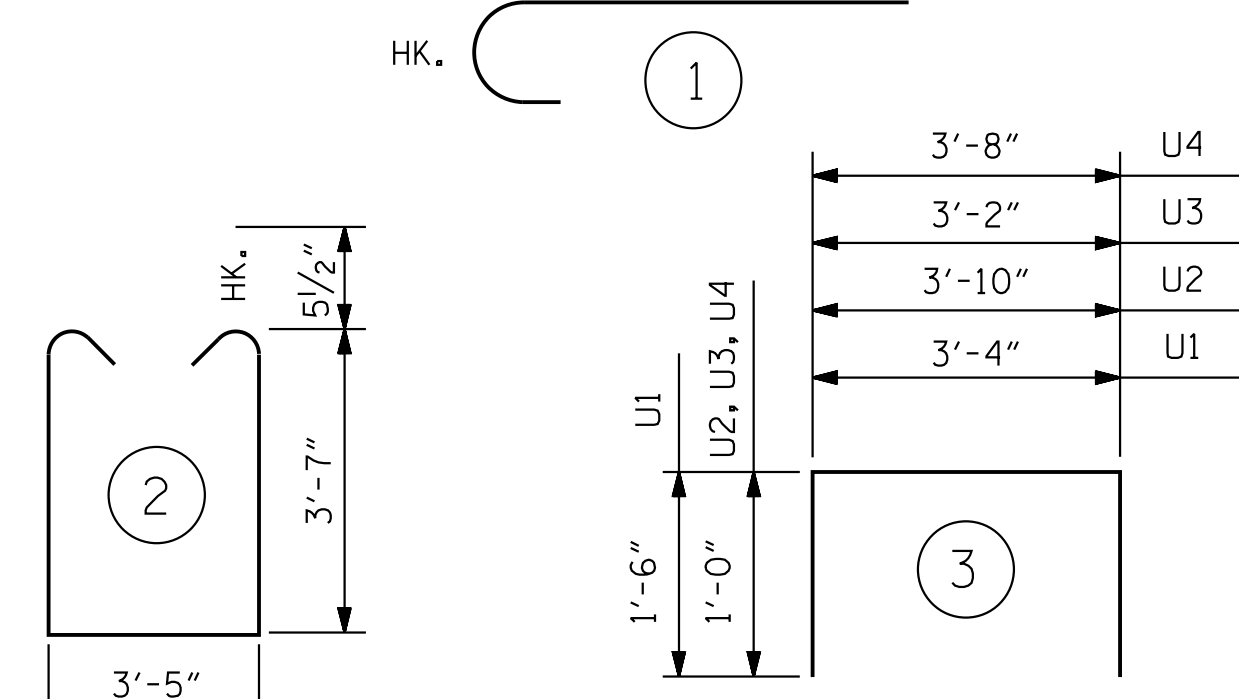
VIEW B-B



VIEW C-C

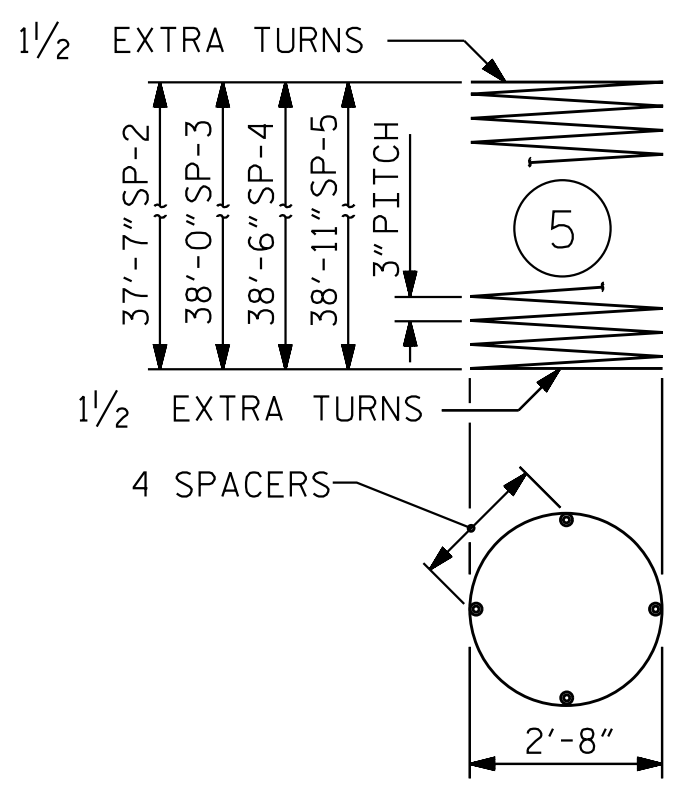
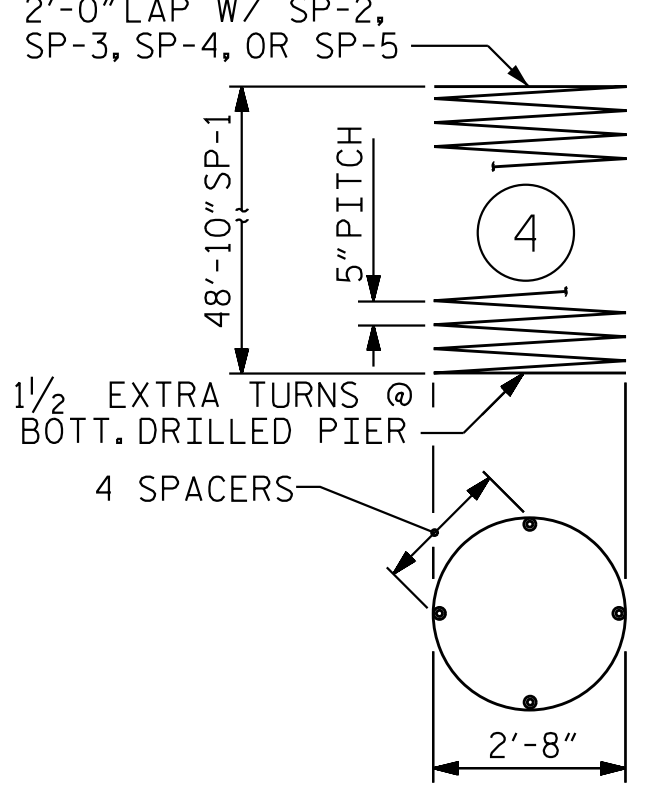
BAR TYPES

B1	1'-5"	35'-8"
B2	1'-3"	36'-1"
V1	1'-3"	40'-5"
V2	1'-3"	40'-10"
V3	1'-3"	41'-4"
V4	1'-3"	41'-9"



*** THE SP-1 SPIRAL REINFORCING STEEL SHALL BE W31 OR D-31 COLD DRAWN WIRE OR #5 PLAIN OR DEFORMED BAR.

** THE SP-2, SP-3, SP-4, & SP-5 SPIRAL REINFORCING STEEL SHALL BE W20 OR D-20 COLD DRAWN WIRE OR #4 PLAIN OR DEFORMED BAR.



ALL BAR DIMENSIONS ARE OUT TO OUT.

BILL OF MATERIAL

BENT #2

BAR	NO.	SIZE	TYPE	LENGTH	WEIGHT
B1	16	#10	1	37'-1"	2554
B2	12	#9	1	37'-4"	1524
B3	18	#4	STR	22'-9"	274
B4	36	#4	STR	6'-0"	145
B5	6	#4	STR	3'-8"	15
M1	64	#10	STR	59'-6"	16386
S1	105	5	2	11'-6"	1260
U1	33	#4	3	6'-4"	140
U2	4	#4	3	5'-10"	16
U3	9	#4	3	5'-2"	32
U4	4	#4	3	5'-8"	16
V1	16	#10	1	41'-8"	2869
V2	16	#10	1	42'-1"	2898
V3	16	#10	1	42'-7"	2932
V4	16	#10	1	43'-0"	2961

REINFORCING STEEL LBS. 34,022

SP	NO.	SIZE	TYPE	LENGTH	WEIGHT
SP-1	4	***	4	989'-0"	4127
SP-2	1	**	5	1268'-0"	848
SP-3	1	**	5	1276'-3"	853
SP-4	1	**	5	1292'-9"	864
SP-5	1	**	5	1309'-2"	875

SPIRAL COLUMN REINFORCING STEEL LBS. 7,567

DRILLED PIER CONC BREAKDOWN:
POUR 1 DRILLED PIERS C. Y. 70.3

3'-6" DIA DRILLED PIERS IN SOIL LIN. FT. 175.33

3'-6" DIA DRILLED PIERS NOT IN SOIL LIN. FT. 22.00

CLASS A CONCRETE BREAKDOWN
POUR #2 COLUMNS C. Y. 39.7
POUR #3 CAP C. Y. 36.5
TOTAL CLASS A CONC. C. Y. 76.3

* CSL TUBES LIN. FT. 813.30

*NO SEPARATE PAYMENT WILL BE MADE FOR CSL TUBES. CSL TUBES WILL BE INCLUDED IN THE UNIT BID PRICE FOR DRILLED PIERS.

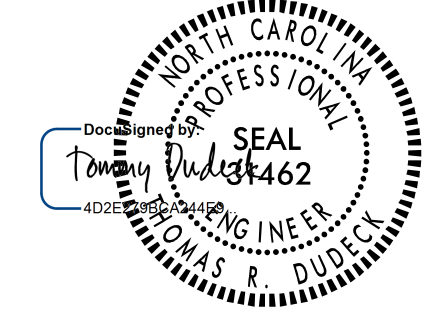
PROJECT NO. U-2525C
GUILFORD COUNTY
STATION: 337+20.09 -L-

SHEET 3 OF 3

STATE OF NORTH CAROLINA
DEPARTMENT OF TRANSPORTATION
RALEIGH

SUBSTRUCTURE
BENT 2 DETAILS

(LL)



1/16/2018

DOCUMENT NOT CONSIDERED FINAL UNLESS ALL SIGNATURES COMPLETED

REVISIONS						SHEET NO. S4-32
NO.	BY:	DATE:	NO.	BY:	DATE:	
1			3			TOTAL SHEETS 39
2			4			

STR. #4

U:\Structures\Drawing\Site 5\Final\LU-2525C.SD.B*2.3.dgn 1/12/2018 5:33:46 PM jgeille



DRAWN BY: J. B. GEILE DATE: 01-30-17
CHECKED BY: V. E. FRAGA DATE: 05-05-17
DESIGN ENGINEER OF RECORD: T. R. DUDECK DATE: 01/16/18