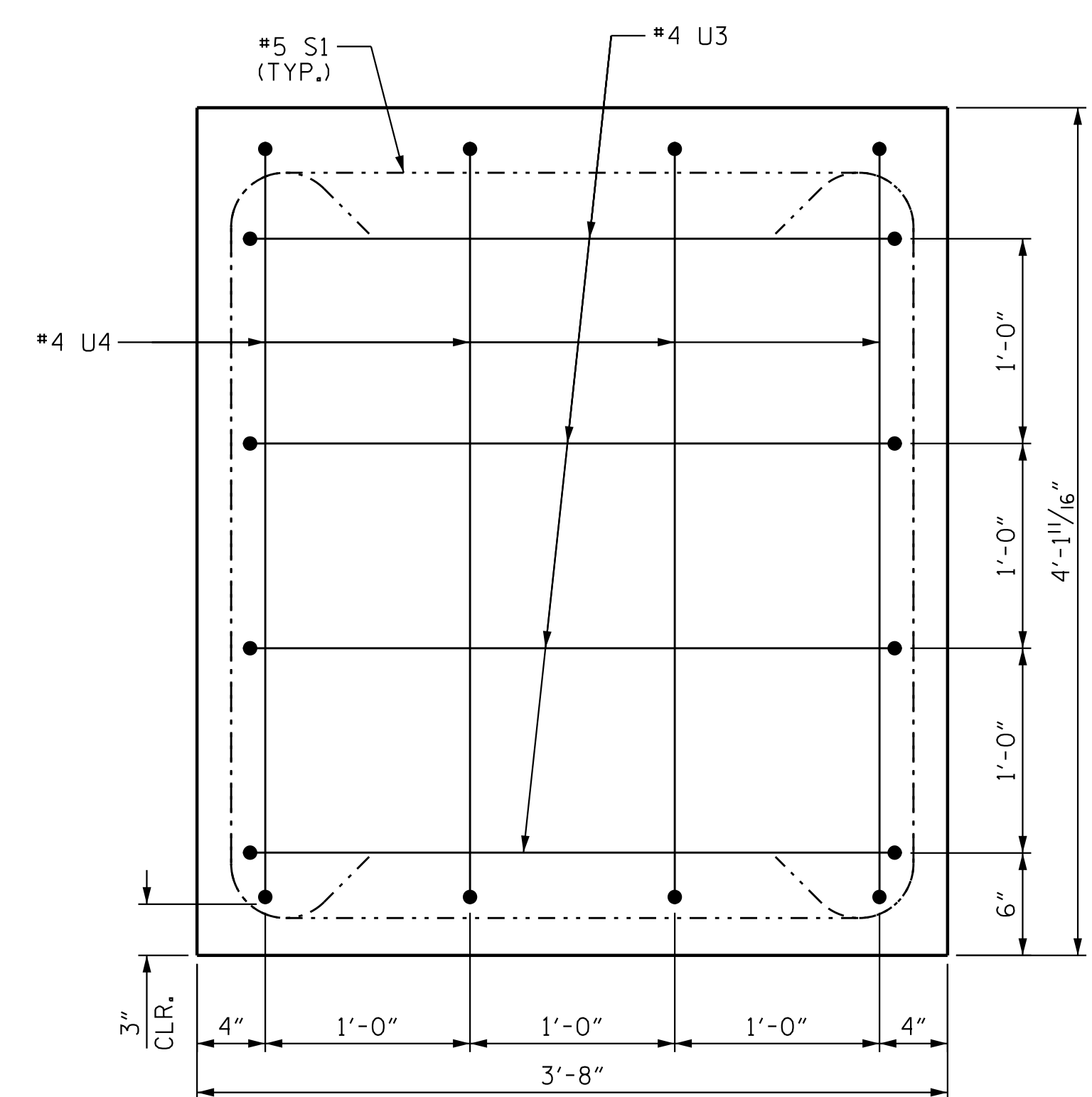
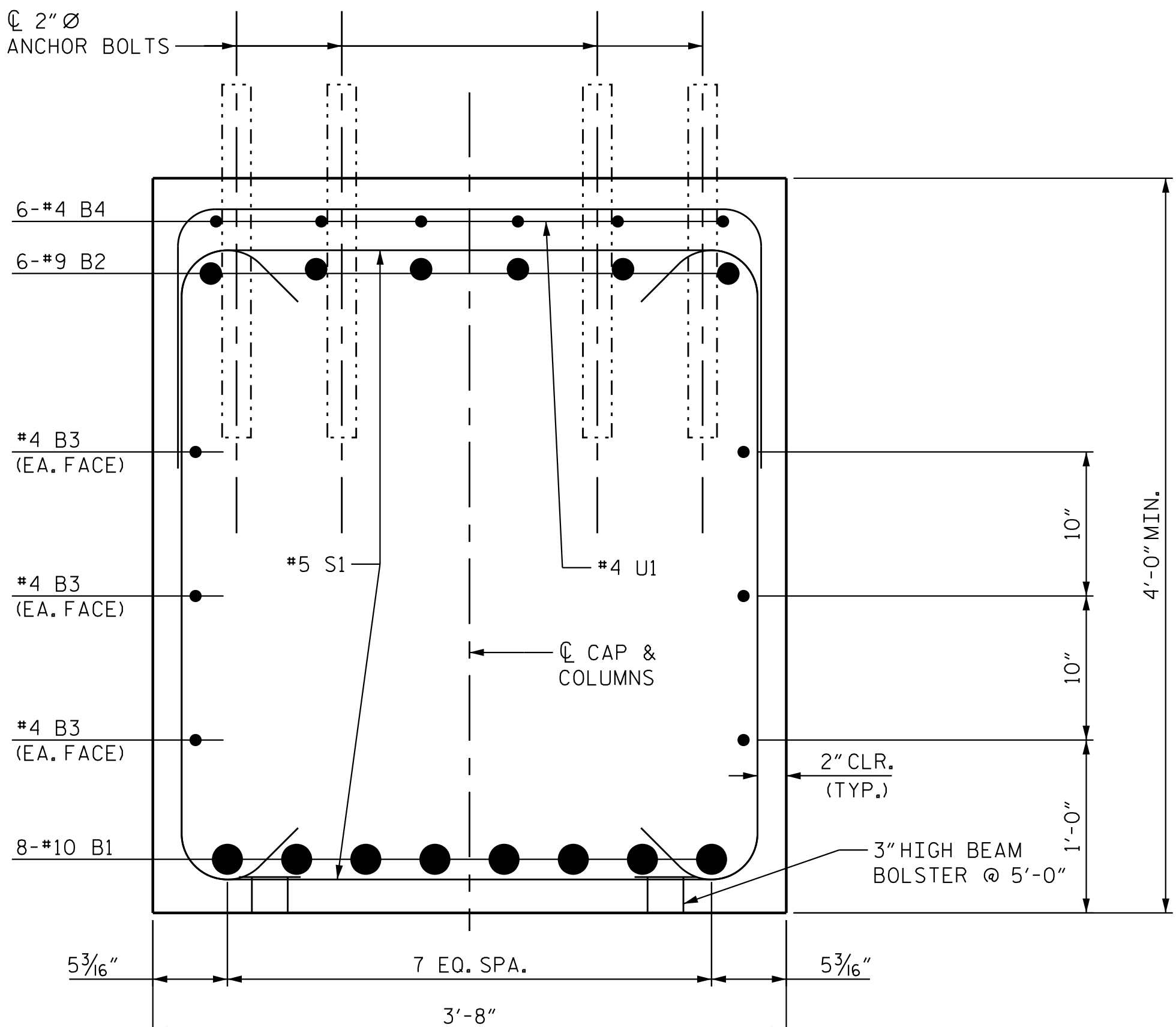


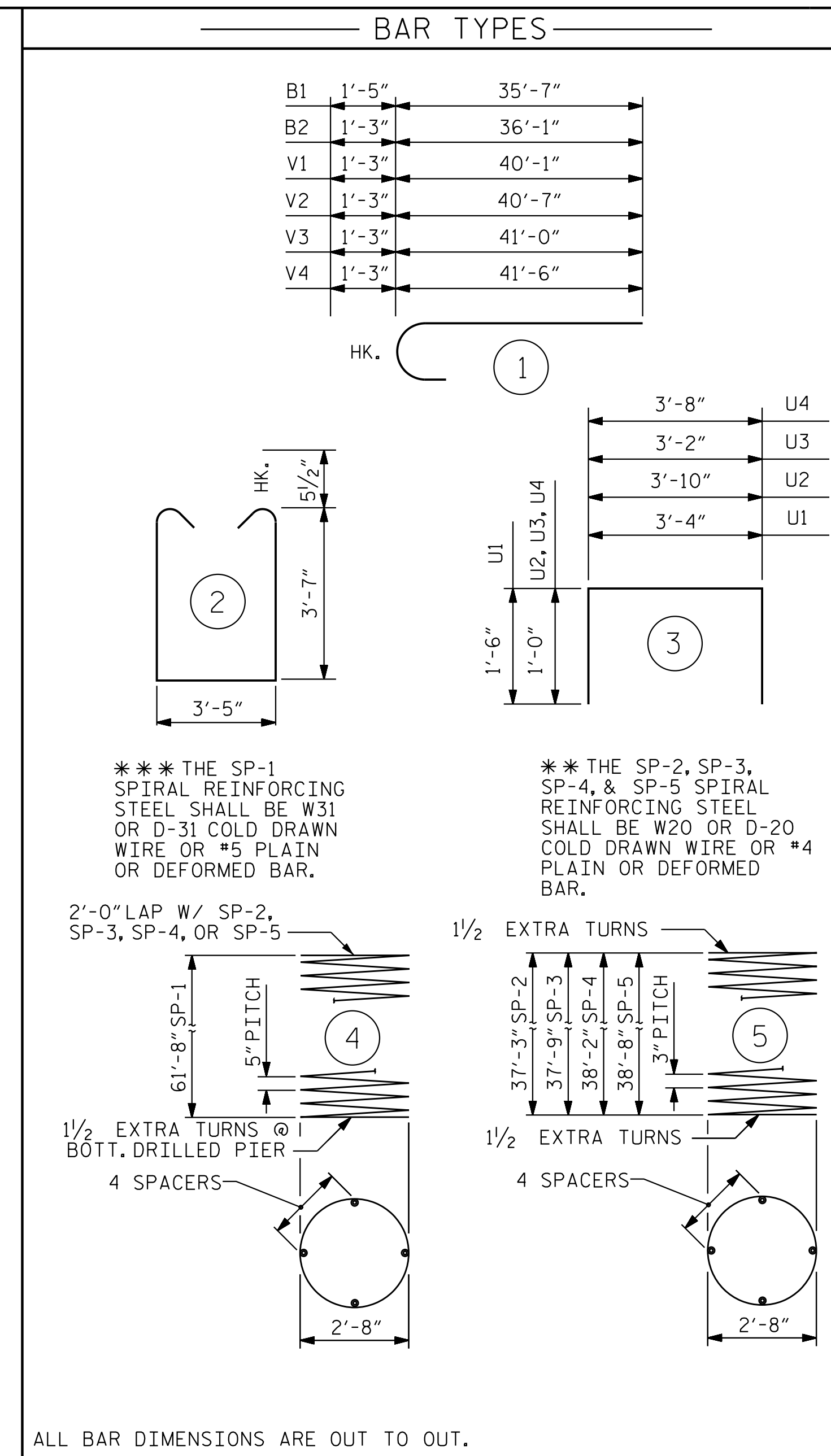
VIEW A-A



VIEW B-B



VIEW C-C



BILL OF MATERIAL					
BENT #1					
BAR NO.	NO.	SIZE	TYPE	LENGTH	WEIGHT
B1	16	#10	1	37'-1"	2554
B2	12	#9	1	37'-4"	1524
B3	18	#4	STR	22'-9"	274
B4	36	#4	STR	6'-0"	145
B5	6	#4	STR	3'-8"	15
M1	64	#10	STR	71'-0"	19553
S1	105	#5	2	11'-6"	1260
U1	33	#4	3	6'-4"	140
U2	4	#4	3	5'-10"	16
U3	9	#4	3	5'-2"	32
U4	4	#4	3	5'-8"	16
V1	16	#10	1	41'-4"	2846
V2	16	#10	1	41'-10"	2881
V3	16	#10	1	42'-3"	2909
V4	16	#10	1	42'-9"	2944
REINFORCING STEEL					LBS. 37,109
SP-1	4	***	4	1244'-0"	5190
SP-2	1	**	5	1251'-7"	837
SP-3	1	**	5	1268'-0"	848
SP-4	1	**	5	1284'-6"	859
SP-5	1	**	5	1300'-11"	870
SPIRAL COLUMN					LBS. 8,604
DRILLED PIER CONC BREAKDOWN:					
POUR 1 DRILLED PIERS					C. Y. 88.6
3'-6" DIA DRILLED PIERS					
IN SOIL					LIN. FT. 240.67
3'-6" DIA DRILLED PIERS					
NOT IN SOIL					LIN. FT. 8.00
CLASS A CONCRETE BREAKDOWN					
POUR #2 COLUMNS					C. Y. 39.4
POUR #3 CAP					C. Y. 36.5
TOTAL CLASS A CONC.					C. Y. 75.9
* CSL TUBES					LIN. FT. 1018.70

PROJECT NO. U-2525C
 GUILFORD COUNTY
 STATION: 337+20.09 -L-

SHEET 3 OF 3

STATE OF NORTH CAROLINA
 DEPARTMENT OF TRANSPORTATION
 RALEIGH

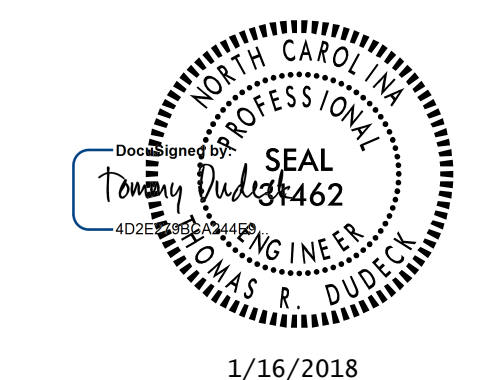
SUBSTRUCTURE

BENT 1 DETAILS

(LL)

REVISIONS					
NO.	BY:	DATE:	NO.	BY:	DATE:
1			3		
2			4		

SHEET NO. S4-29
 TOTAL SHEETS 39



1/16/2018
 DOCUMENT NOT CONSIDERED FINAL UNLESS ALL SIGNATURES COMPLETED

Stantec Consulting Services Inc.
 801 Jones Franklin Road
 Suite 300
 Raleigh, NC 27606
 Tel. (919) 851-6866
 Fax. (919) 851-7024
 www.stantec.com
 License No. F-0672

DRAWN BY: J. B. GEILE DATE: 01-30-17
 CHECKED BY: V. E. FRAGA DATE: 04-20-17
 DESIGN ENGINEER OF RECORD: T.R. DUDECK DATE: 01/16/18

U:\Structures\Drawing\Site 5\Final\LU-2525C.SD.B*.I.3.dgn
 1/12/2018 5:33:53 PM jgeile