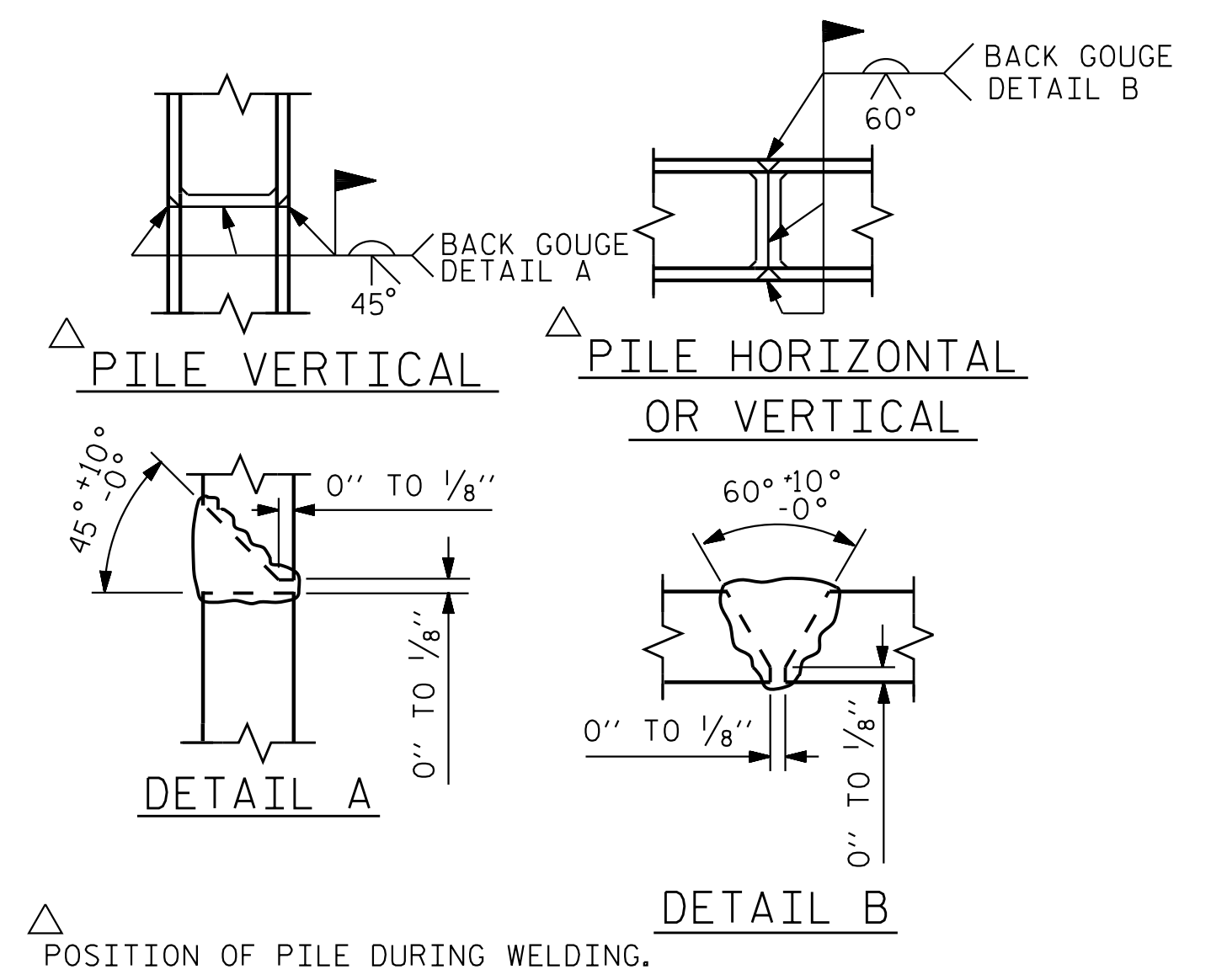


BAGGED STONE AND PIPE SHALL BE PLACED IMMEDIATELY AFTER COMPLETION OF END BENT EXCAVATION. PIPE MAY BE EITHER CONCRETE, CORRUGATED STEEL, CORRUGATED ALUMINUM ALLOY, OR CORRUGATED PLASTIC. PERFORATED PIPE WILL NOT BE ALLOWED.

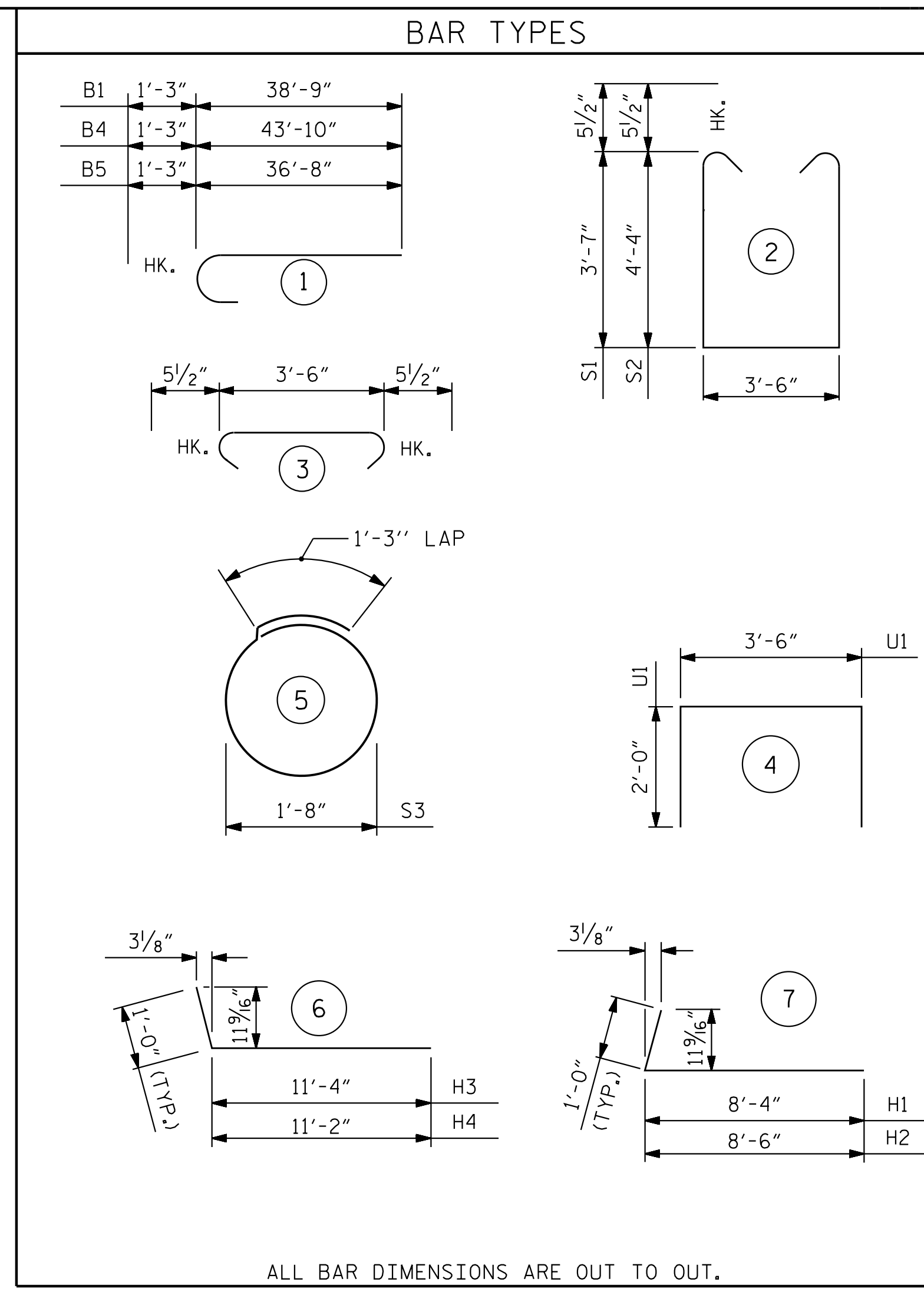
BAGGED STONE SHALL REMAIN IN PLACE UNTIL THE ENGINEER DIRECTS THAT IT BE REMOVED. THE CONTRACTOR SHALL REMOVE AND DISPOSE OF SILT ACCUMULATIONS AT BAGGED STONE WHEN SO DIRECTED BY THE ENGINEER. BAGS SHALL BE REMOVED AND REPLACED WHENEVER THE ENGINEER DETERMINES THAT THEY HAVE DETERIORATED AND LOST THEIR EFFECTIVENESS.

NO SEPARATE PAYMENT WILL BE MADE FOR THIS WORK AND THE ENTIRE COST OF THIS WORK SHALL BE INCLUDED IN THE UNIT CONTRACT PRICE BID FOR THE SEVERAL PAY ITEMS.

### TEMPORARY DRAINAGE AT END BENT

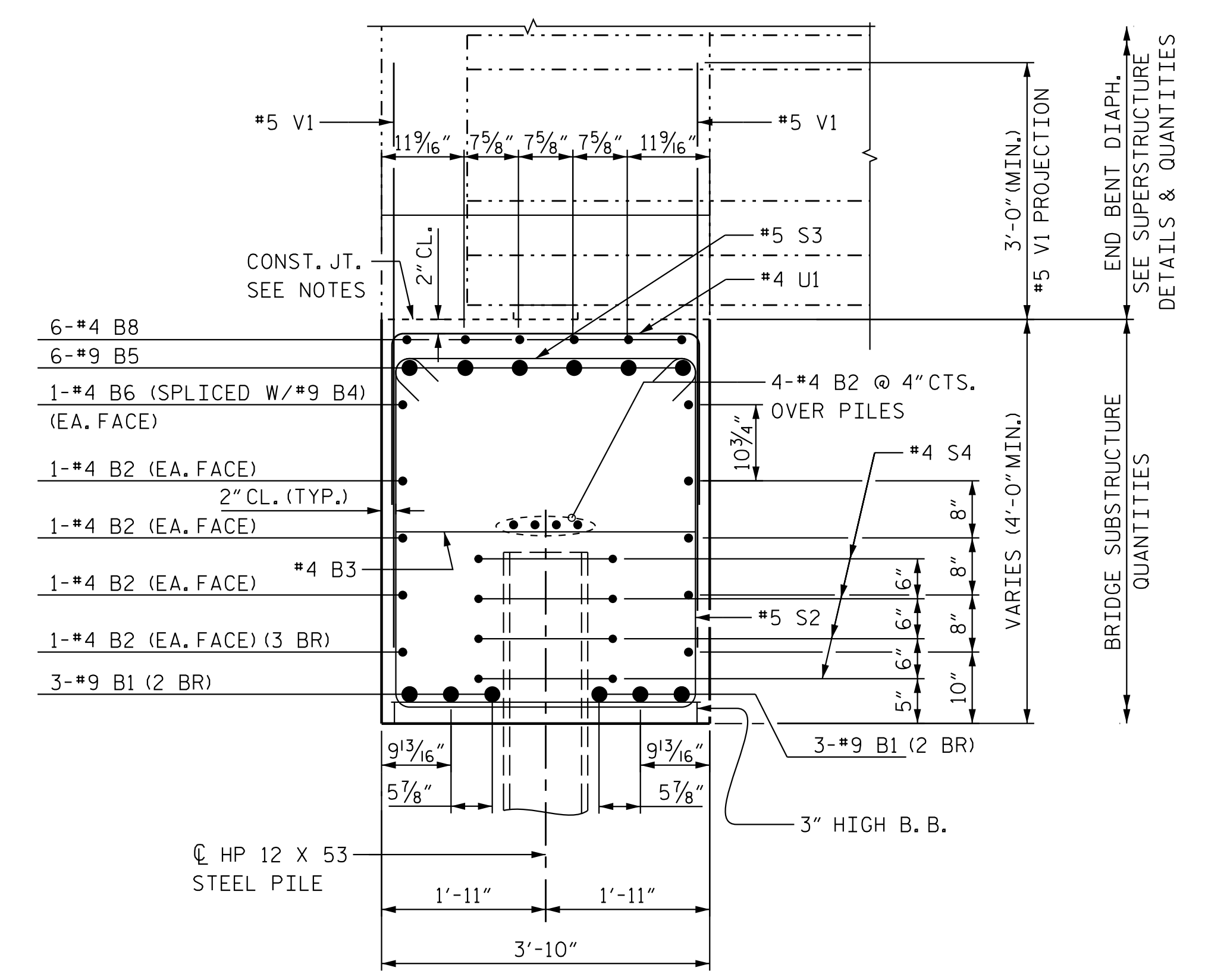


### PILE SPLICE DETAILS



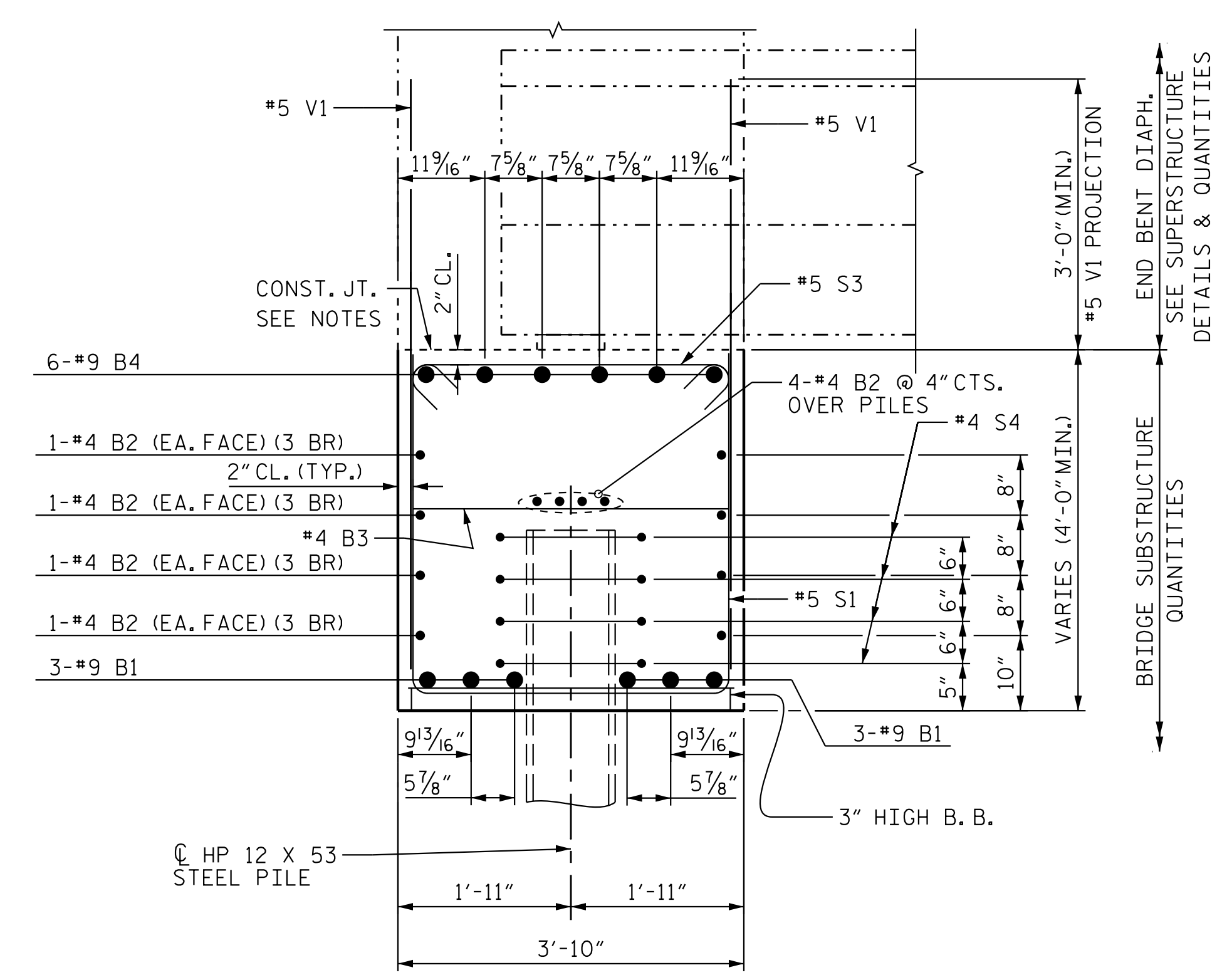
ALL BAR DIMENSIONS ARE OUT TO OUT.

BILL OF MATERIAL					
END BENT 1					
BAR	NO.	SIZE	TYPE	LENGTH	WEIGHT
B1	12	#9	1	40'-0"	1632
B2	36	#4	STR	25'-5"	612
B3	20	#4	STR	3'-6"	47
B4	6	#9	1	45'-1"	920
B5	6	#9	1	37'-11"	774
B6	2	#4	STR	30'-0"	41
B7	6	#4	STR	12'-3"	50
B8	6	#4	STR	26'-9"	108
B9	6	#4	STR	7'-0"	29
K10	20	#4	STR	4'-9"	64
K11	8	#4	STR	3'-9"	21
H1	14	#5	7	9'-4"	137
H2	14	#5	7	9'-6"	139
H3	22	#5	6	12'-4"	284
H4	22	#5	6	12'-2"	280
S1	38	#5	2	11'-7"	460
S2	41	#5	2	13'-1"	560
S3	70	#5	3	4'-5"	323
S4	36	#4	5	6'-6"	157
U1	27	#4	4	7'-6"	136
V1	118	#5	STR	6'-10"	842
V2	26	#5	STR	8'-10"	240
V3	32	#5	STR	10'-4"	345
REINFORCING STEEL					LBS. 8,201
CLASS A CONCRETE BREAKDOWN:					
POUR #1: CAP, COLLARS, ETC.				C.Y.	52.1
POUR #2: BACKWALL				C.Y.	4.8
CLASS A CONCRETE TOTAL					C.Y. 56.9
HP12X53 PILES					FT. 720.00
NO. 9					EA. 9
PILE DRIVING EQUIPMENT					
SETUP FOR STEEL PILES					EA. 9



### SECTION A-A

SEE "END BENT 1" SHEET 1 OF 3



### SECTION B-B

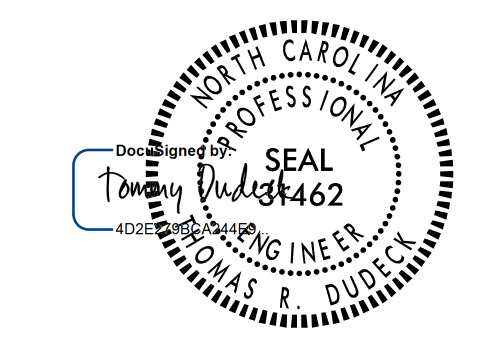
SEE "END BENT 1" SHEET 1 OF 3

**NOTES**  
 TOP SURFACE AREAS OF THE END BENT CAP SHALL BE KEPT CLEAN AND FREE OF LAITANCE.  
 ROUGH FLOAT AND ROUGHEN THE TOP OF THE END BENT CAP TO PROVIDE MIN. SURFACE AMPLITUDE OF 1/4", EXCEPT UNDER BEARING AREAS.  
 2 BR DENOTES 2 BAR RUN.  
 3 BR DENOTES 3 BAR RUN.

PROJECT NO. U-2525C  
 GUILFORD COUNTY  
 STATION: 337+20.09 -L-

SHEET 3 OF 3

STATE OF NORTH CAROLINA  
 DEPARTMENT OF TRANSPORTATION  
 RALEIGH  
 SUBSTRUCTURE  
 END BENT 1 DETAILS  
 (LL)



1/16/2018  
 DOCUMENT NOT CONSIDERED FINAL UNLESS ALL SIGNATURES COMPLETED

REVISIONS						SHEET NO.
NO.	BY:	DATE:	NO.	BY:	DATE:	S4-26
1			3			TOTAL SHEETS 39
2			4			

1/12/2018 5:33:53 PM jgeille  
 U:\Structures\Drawing\Site 5\Final\LU-2525C-SD.E\*1.2.dgn

Stantec Consulting Services Inc.  
 801 Jones Franklin Road  
 Suite 300  
 Raleigh, NC 27606  
 Tel. (919) 851-6866  
 Fax. (919) 851-7024  
 www.stantec.com  
 License No. F-0672

DRAWN BY: J. B. GEILE DATE: 01-27-17  
 CHECKED BY: V. E. FRAGA DATE: 03-14-17  
 DESIGN ENGINEER OF RECORD: T. R. DUDECK DATE: 01/16/18