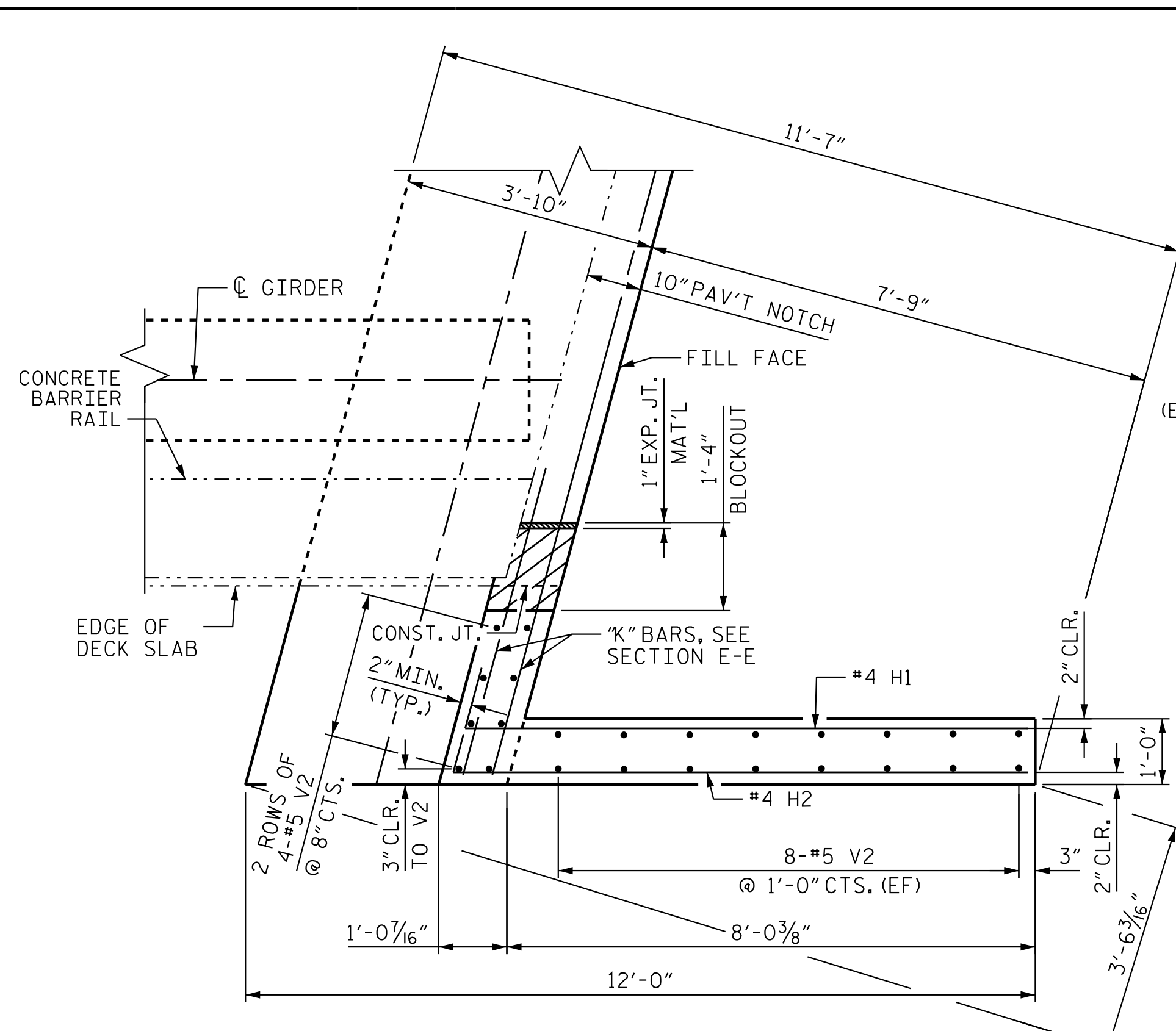
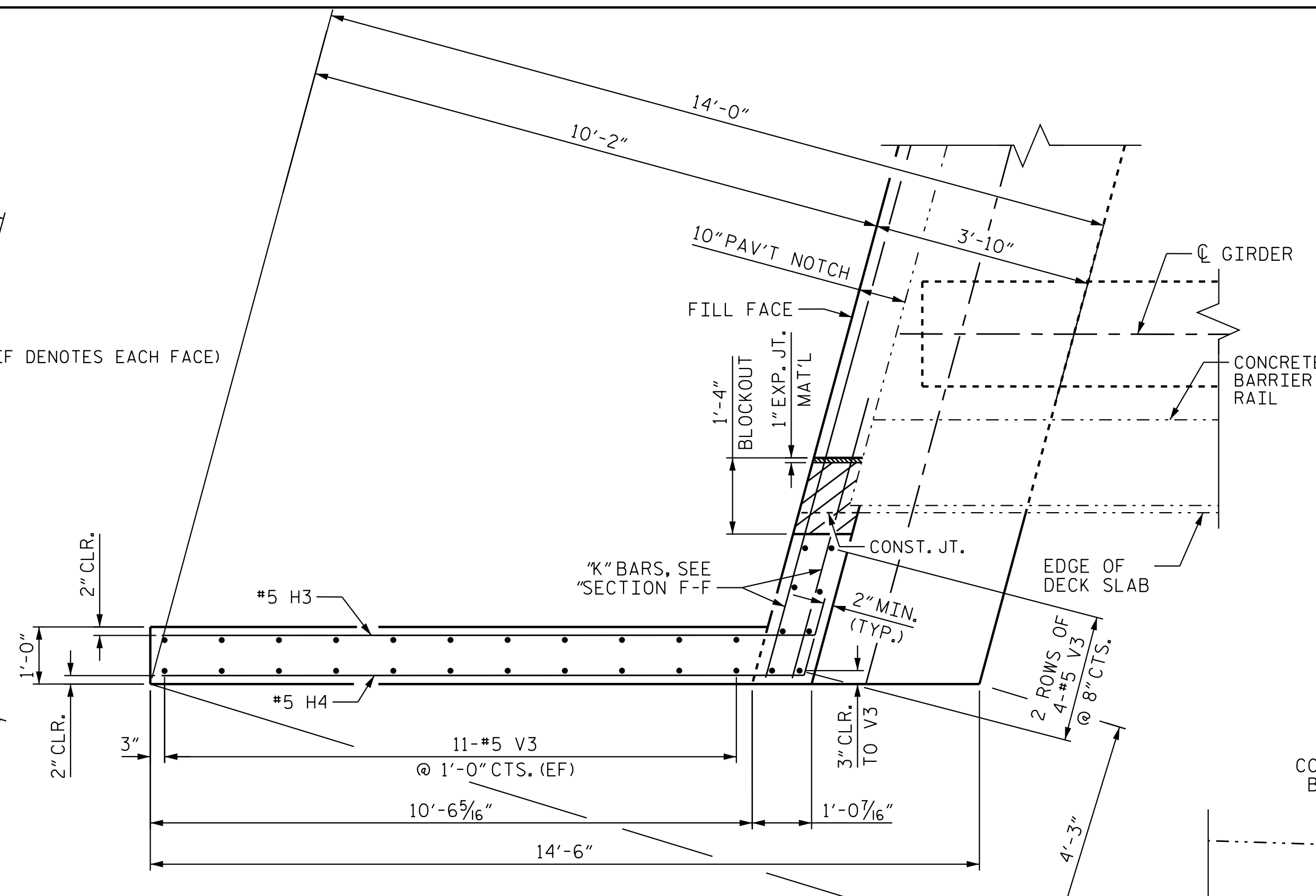


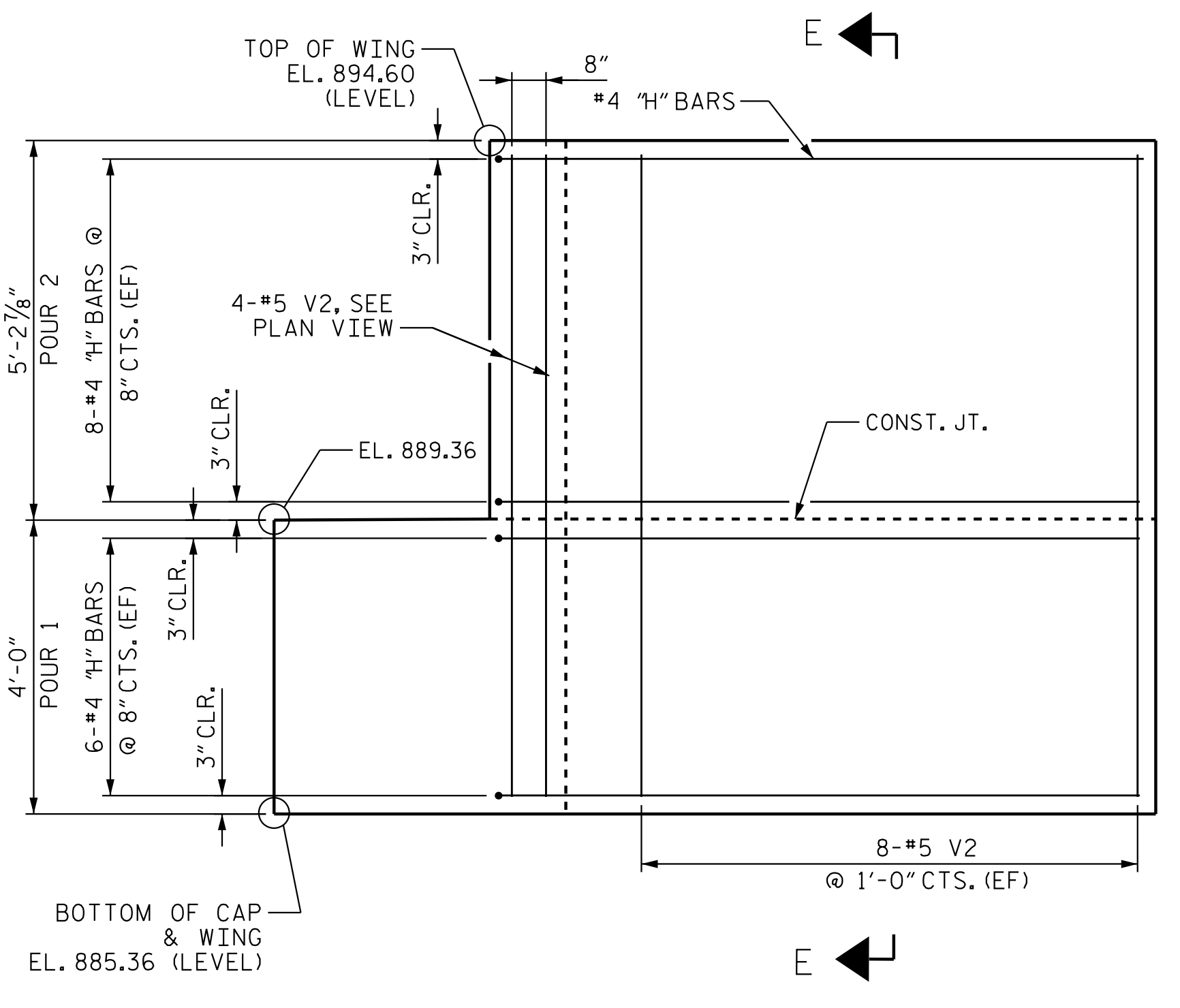
1/12/2018 5:33:31 PM jgeille
 U:\Structures\Drawings\Site 5\Final\U-2525C.SD.S-4.dgn



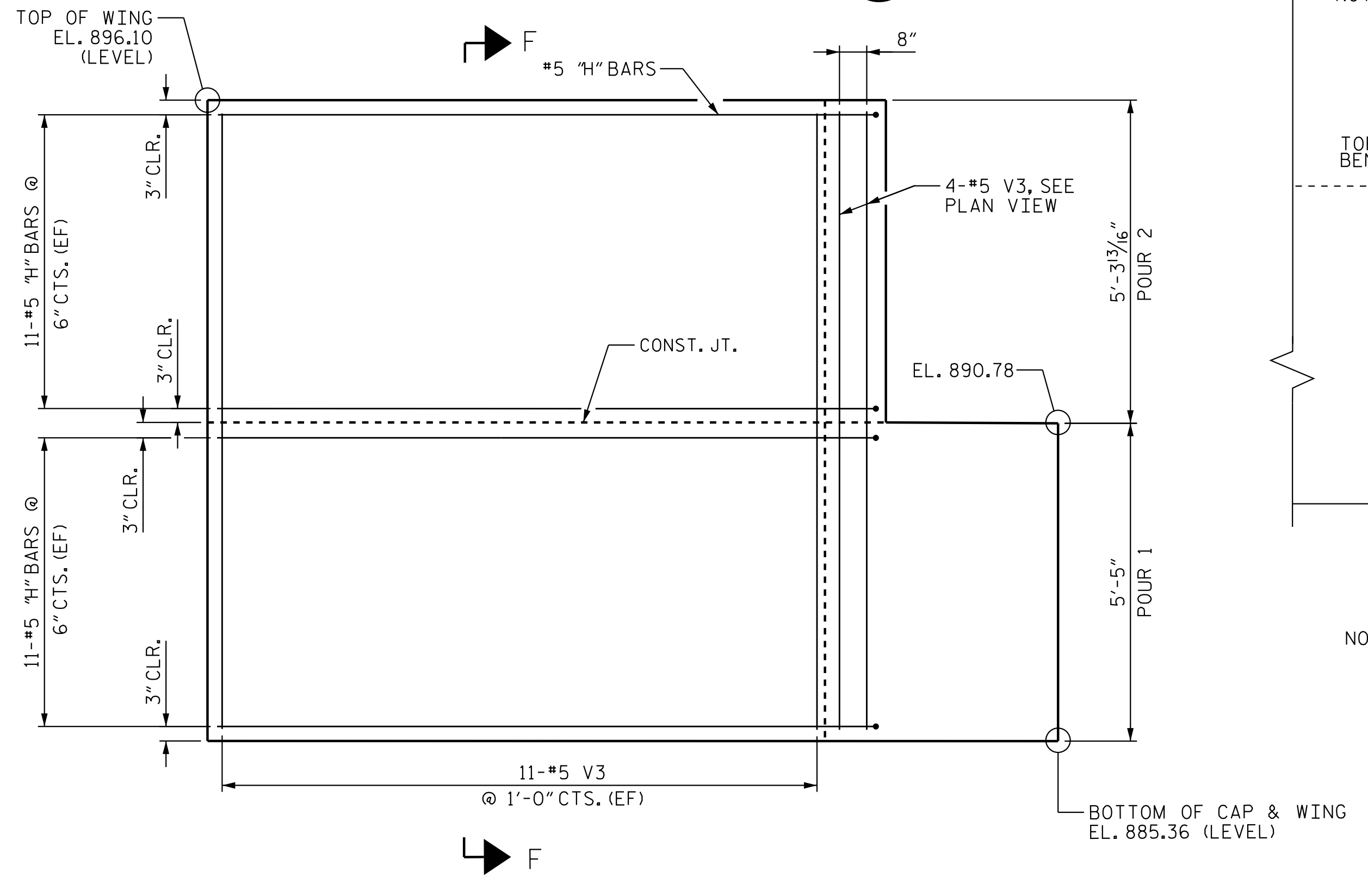
PLAN OF LEFT WING (W1)



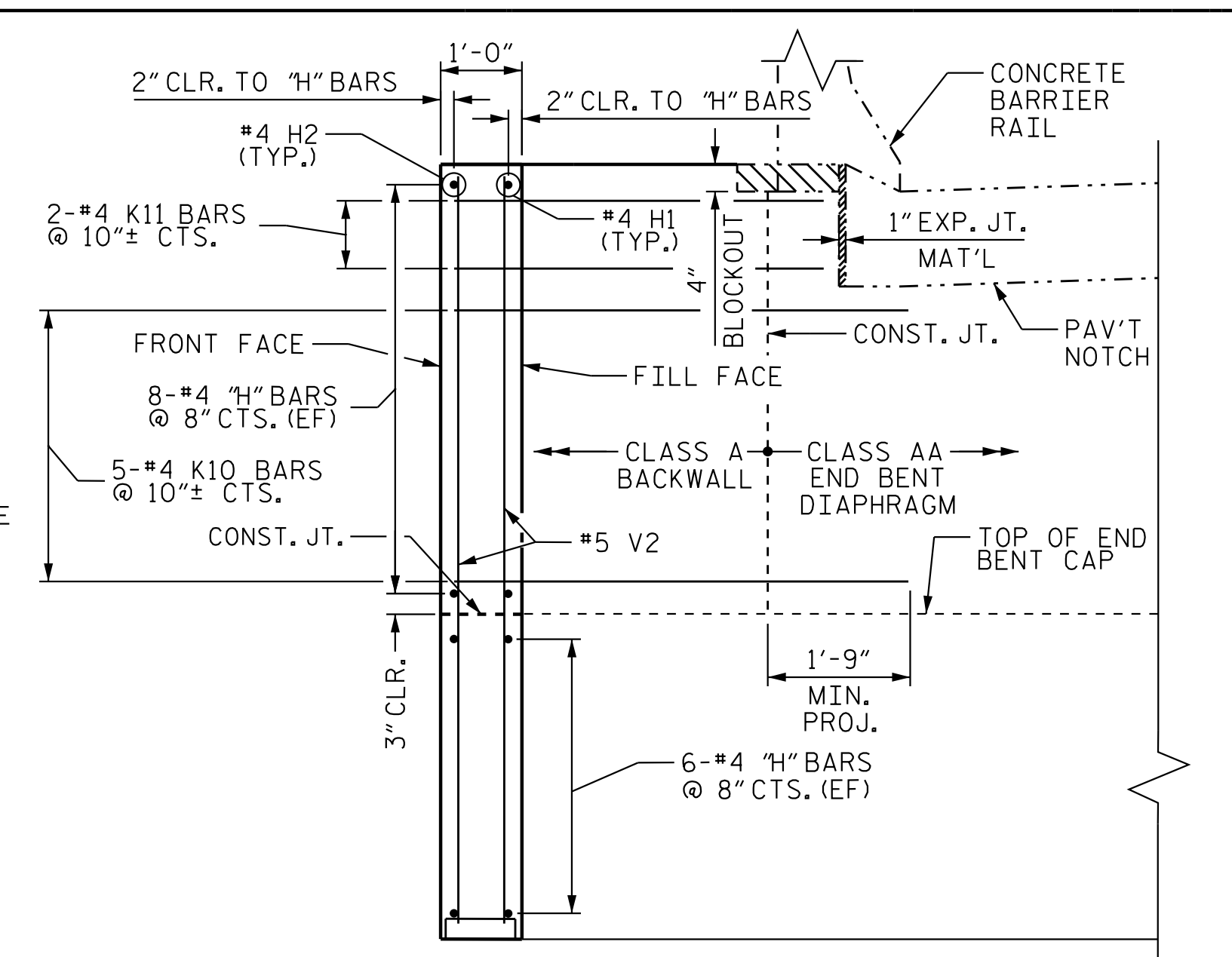
PLAN OF RIGHT WING (W2)



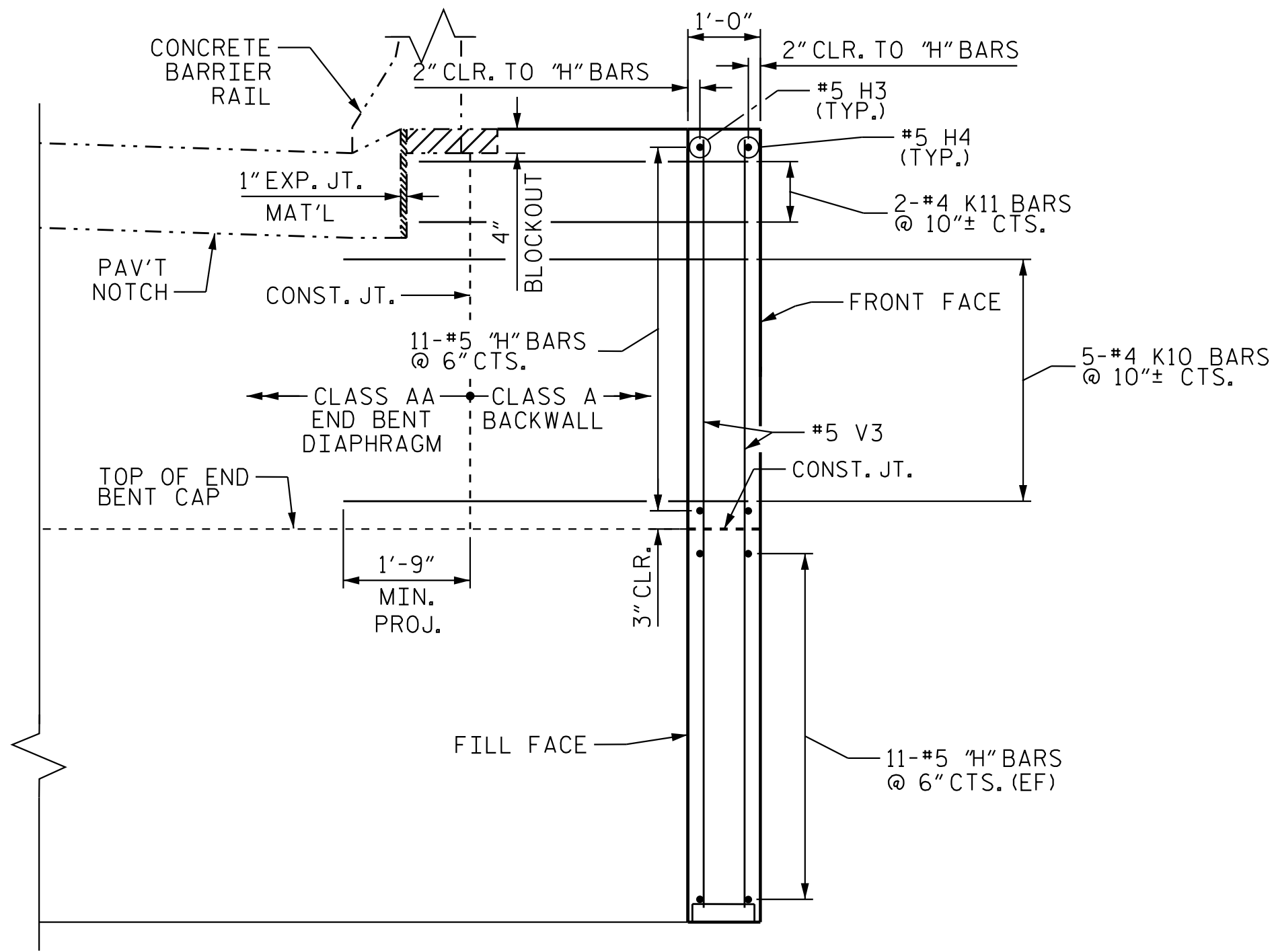
ELEVATION OF LEFT WING (W1)



ELEVATION OF RIGHT WING (W2)



SECTION E-E



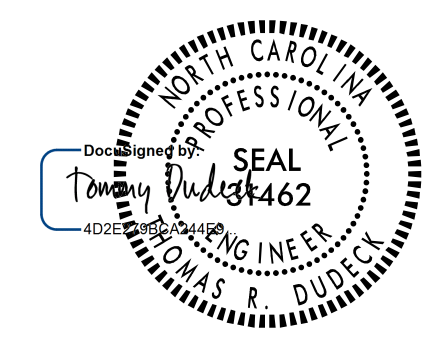
SECTION F-F

NOTE: (EF) DENOTES EA. FACE OF WING

PROJECT NO. U-2525C
 GUILFORD COUNTY
 STATION: 337+20.09 -L-

SHEET 2 OF 3

STATE OF NORTH CAROLINA
 DEPARTMENT OF TRANSPORTATION
 RALEIGH
 SUBSTRUCTURE
 END BENT 1 DETAILS - WING WALLS
 (LL)



1/16/2018

NOTE: TOP SURFACE OF END BENT CAP BETWEEN EDGE OF DECK SLAB AND END OF CAP SHALL BE SLOPED TRANSVERSELY FROM FRONT FACE TO FILL FACE AT A RATE OF 1/4" / FT.

Stantec
 Stantec Consulting Services Inc.
 801 Jones Franklin Road
 Suite 300
 Raleigh, NC 27606
 Tel. (919) 851-6866
 Fax. (919) 851-7024
 www.stantec.com
 License No. F-0672

DRAWN BY: J. B. GEILE DATE: 01-25-17
 CHECKED BY: V. E. FRAGA DATE: 05-10-17
 DESIGN ENGINEER OF RECORD: T. R. DUDECK DATE: 01/16/18

REVISIONS						SHEET NO. S4-25
NO.	BY:	DATE:	NO.	BY:	DATE:	
1			3			TOTAL SHEETS 39
2			4			