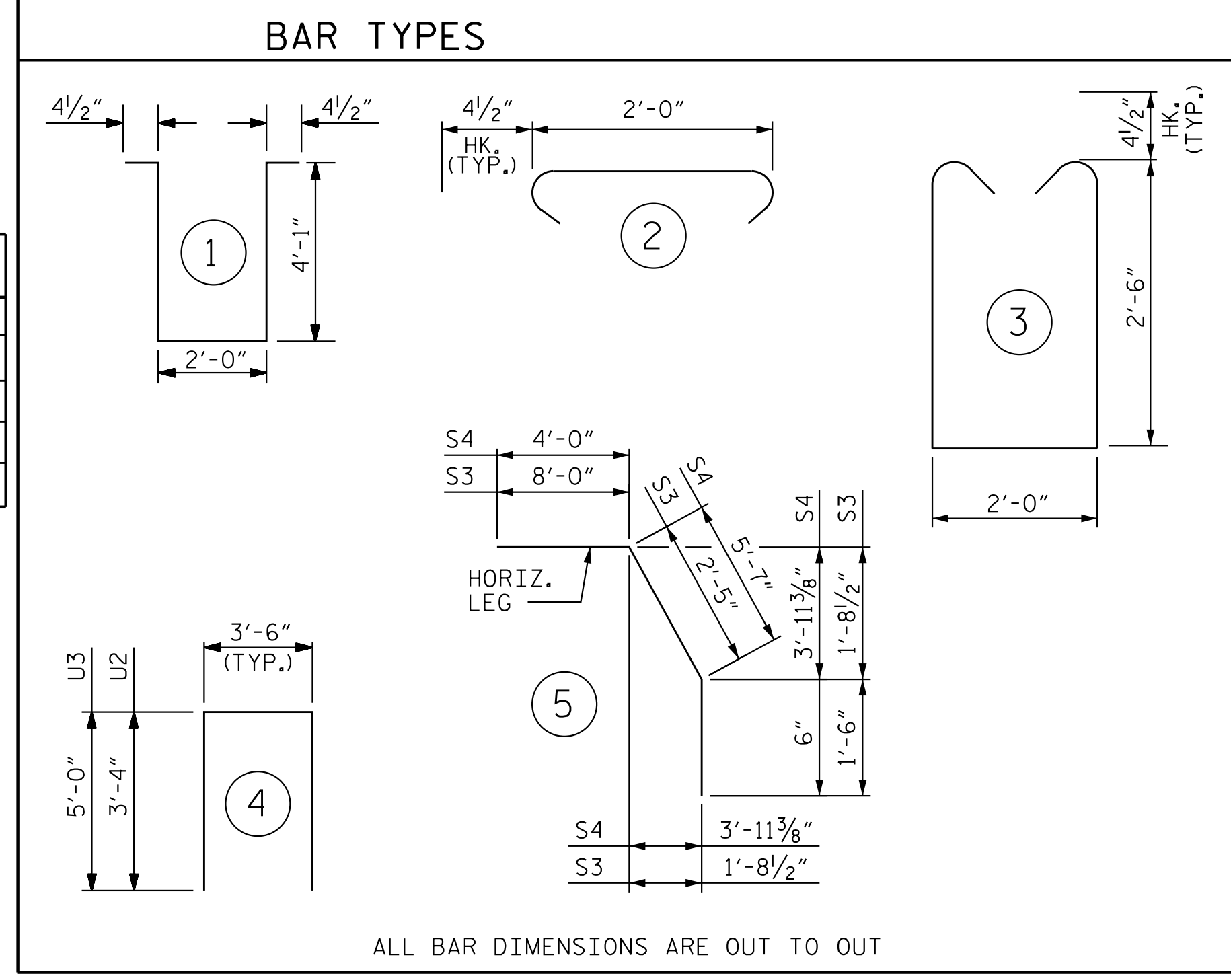


SUPERSTRUCTURE REINFORCING STEEL LENGTHS ARE BASED ON THE FOLLOWING MINIMUM SPLICE LENGTHS					
BAR SIZE	SUPERSTRUCTURE EXCEPT APPROACH SLABS, PARAPET, AND BARRIER RAIL		APPROACH SLABS		PARAPET AND BARRIER RAIL
	EPOXY COATED	UNCOATED	EPOXY COATED	UNCOATED	
#4	2'-0"	1'-9"	2'-0"	1'-9"	2'-9"
#5	2'-6"	2'-2"	2'-6"	2'-2"	3'-5"
#6	3'-0"	2'-7"	3'-10"	2'-7"	4'-4"
#7	5'-3"	3'-6"			
#8	6'-10"	4'-7"			

GROOVING BRIDGE FLOORS	
APPROACH SLABS	2,654 SQ.FT.
BRIDGE DECK	10,962 SQ.FT.
TOTAL	13,616 SQ.FT.

CLASS AA CONC. BREAKDOWN	
POUR #1	80.5 C.Y.
POUR #2	203.0 C.Y.
POUR #3	126.3 C.Y.
POUR #4	93.4 C.Y.
TOTAL CLASS AA CONC.	503.2 C.Y.

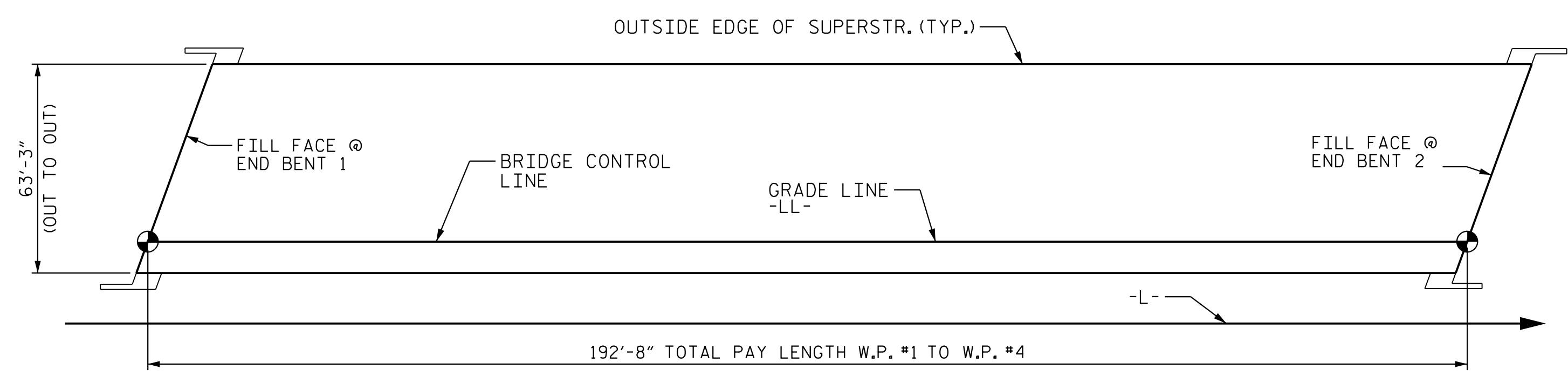


REINFORCING BAR SCHEDULE (DECK & DIAPHRAGM)											
BAR	NO.	SIZE	TYPE	LENGTH	WEIGHT	BAR	NO.	SIZE	TYPE	LENGTH	WEIGHT
* A1	696	#5	STR	32'-9"	23775	* B1	176	#5	STR	49'-7"	9102
* A101	4	#5	STR	59'-4"	248	B2	320	#5	STR	49'-7"	16549
* A102	4	#5	STR	55'-8"	233	* B3	242	#5	STR	10'-6"	2651
* A103	4	#5	STR	52'-0"	217	* B4	242	#5	STR	52'-4"	13210
* A104	4	#5	STR	48'-3"	202	E1	32	#5	STR	2'-6"	83
* A105	4	#5	STR	44'-7"	187	* G1	4	#5	STR	33'-9"	141
* A106	4	#5	STR	40'-10"	171	K1	30	#4	STR	21'-5"	430
* A107	4	#5	STR	37'-2"	156	K2	36	#4	STR	8'-1"	195
* A108	4	#5	STR	33'-5"	140	K3	72	#4	STR	8'-10"	425
* A109	4	#5	STR	29'-9"	125	K4	36	#4	STR	7'-7"	183
* A110	4	#5	STR	26'-0"	109	K5	36	#4	STR	6'-5"	155
* A111	4	#5	STR	22'-4"	94	K6	30	#4	STR	25'-0"	501
* A112	4	#5	STR	18'-8"	78	K7	4	#4	STR	2'-2"	6
* A113	4	#5	STR	14'-11"	63	K8	8	#4	STR	2'-7"	14
* A114	4	#5	STR	11'-3"	47	K9	8	#4	STR	2'-0"	11
* A115	4	#5	STR	7'-6"	32						
* A116	4	#5	STR	3'-10"	16						
* A117	2	#5	STR	2'-0"	5						
A2	696	#5	STR	32'-7"	23654						
A201	4	#5	STR	59'-4"	248	S1	96	#4	3	7'-9"	497
A202	4	#5	STR	55'-8"	233	S2	384	#4	2	2'-9"	706
A203	4	#5	STR	52'-0"	217	* S3	126	#4	5	11'-11"	1004
A204	4	#5	STR	48'-3"	202	* S4	96	#4	5	10'-1"	647
A205	4	#5	STR	44'-7"	187						
A206	4	#5	STR	40'-10"	171	U1	72	#4	1	10'-11"	526
A207	4	#5	STR	37'-2"	156	U2	104	#4	4	10'-2"	707
A208	4	#5	STR	33'-5"	140	U3	12	#4	4	10'-8"	86
A209	4	#5	STR	29'-9"	125						
A210	4	#5	STR	26'-0"	109						
A211	4	#5	STR	22'-4"	94						
A212	4	#5	STR	18'-8"	78						
A213	4	#5	STR	14'-11"	63						
A214	4	#5	STR	11'-3"	47						
A215	4	#5	STR	7'-6"	32						
A216	4	#5	STR	3'-10"	16						
A217	2	#5	STR	2'-0"	5						

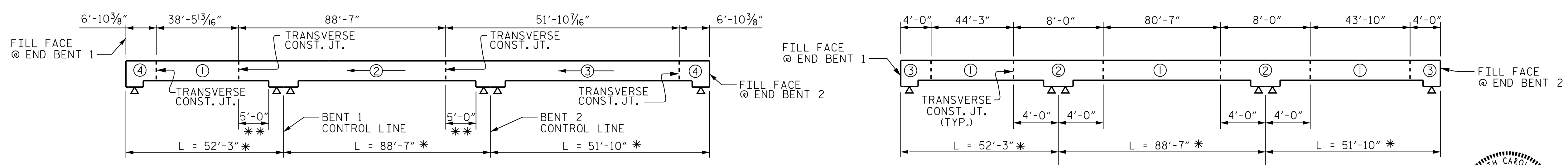
ALL BAR DIMENSIONS ARE OUT TO OUT

SUPERSTRUCTURE BILL OF MATERIAL			
	CLASS AA CONCRETE	REINFORCING STEEL	EPOXY COATED REINFORCING STEEL
	(CU. YDS.)	(LBS.)	(LBS.)
TOTALS**	503.2	46,883	51,761

\*\*QUANTITIES FOR BARRIER RAIL ARE NOT INCLUDED



LAYOUT FOR COMPUTING AREA OF REINFORCED CONCRETE DECK SLAB (SQ. FT. = 12,186)



POURING SEQUENCE

⊕ = INDICATES POUR NUMBER AND DIRECTION OF POUR

\* DIMENSIONS ALONG GIRDER CL  
\*\* DIMENSION PARALLEL TO BENT CONTROL LINE

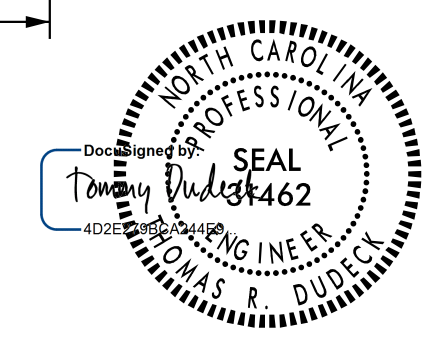
OPTIONAL POURING SEQUENCE

NOTE: POUR ② & ③ CAN NOT BE STARTED UNTIL BOTH ADJACENT POURS REACH A MINIMUM COMP. STRENGTH OF 3000 PSI.

REINFORCING STEEL 46,883 LBS.  
\* EPOXY COATED REINFORCING STEEL 51,761 LBS.

PROJECT NO. U-2525C  
GUILFORD COUNTY  
STATION: 337+20.09 -L-

STATE OF NORTH CAROLINA  
DEPARTMENT OF TRANSPORTATION  
RALEIGH  
SUPERSTRUCTURE  
BILL OF MATERIALS  
(LL)



1/16/2018

DOCUMENT NOT CONSIDERED FINAL UNLESS ALL SIGNATURES COMPLETED

REVISIONS						SHEET NO. S4-23
NO.	BY:	DATE:	NO.	BY:	DATE:	
1			3			TOTAL SHEETS 39
2			4			

STR. #4

1/12/2018 5:33:25 PM jgelle

U:\Structures\Drawings\Site 5\Final\LU-2525C-SD\_BM.dgn

Stantec Consulting Services Inc.  
801 Jones Franklin Road  
Suite 300  
Raleigh, NC 27606  
Tel. (919) 851-6866  
Fax. (919) 851-7024  
www.stantec.com  
License No. F-0672

DRAWN BY: N. D'AIUTO DATE: 01/26/17  
CHECKED BY: V. E. FRAGA DATE: 03/09/17  
DESIGN ENGINEER OF RECORD: T.R. DUDECK DATE: 01/16/18