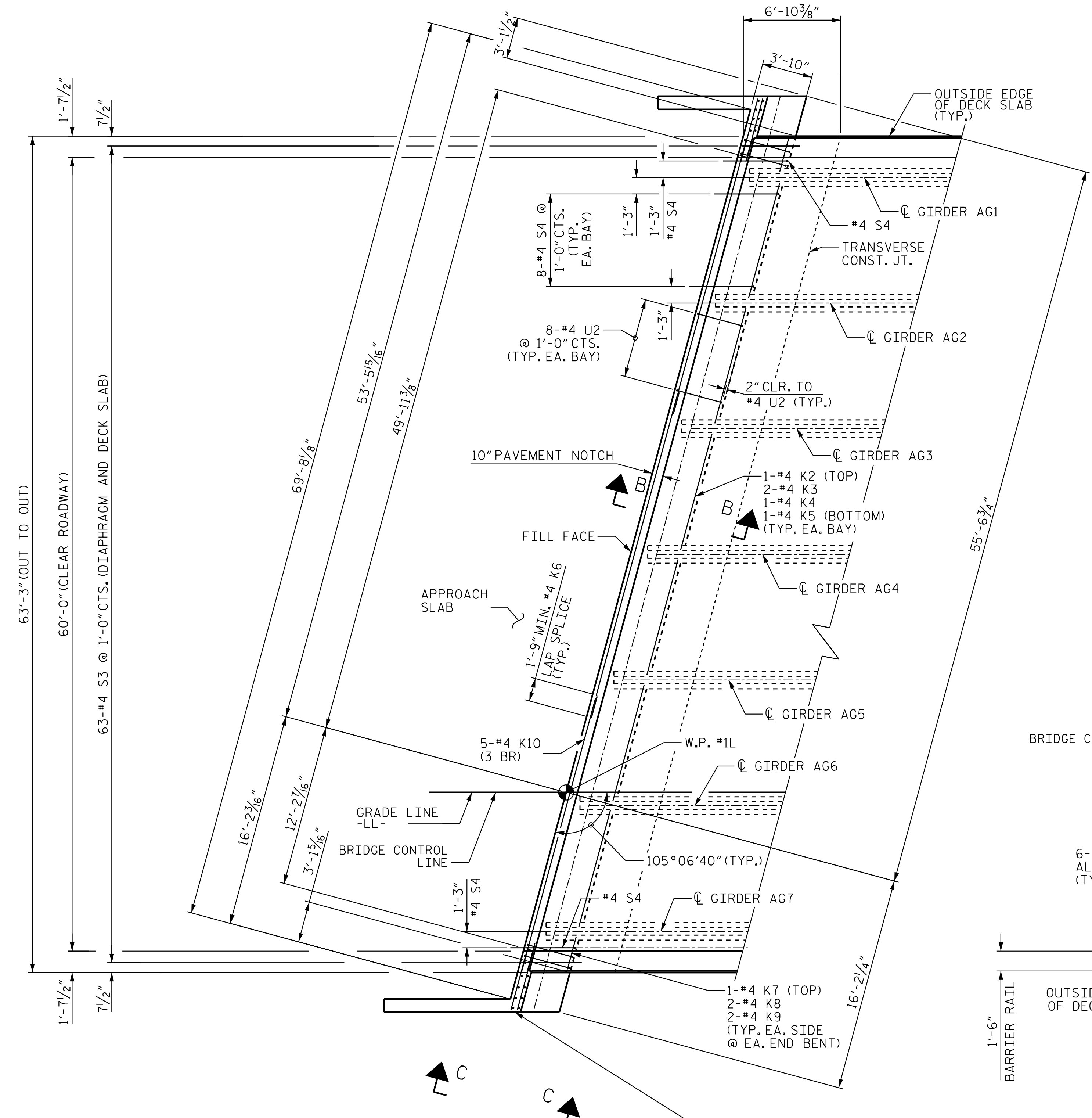


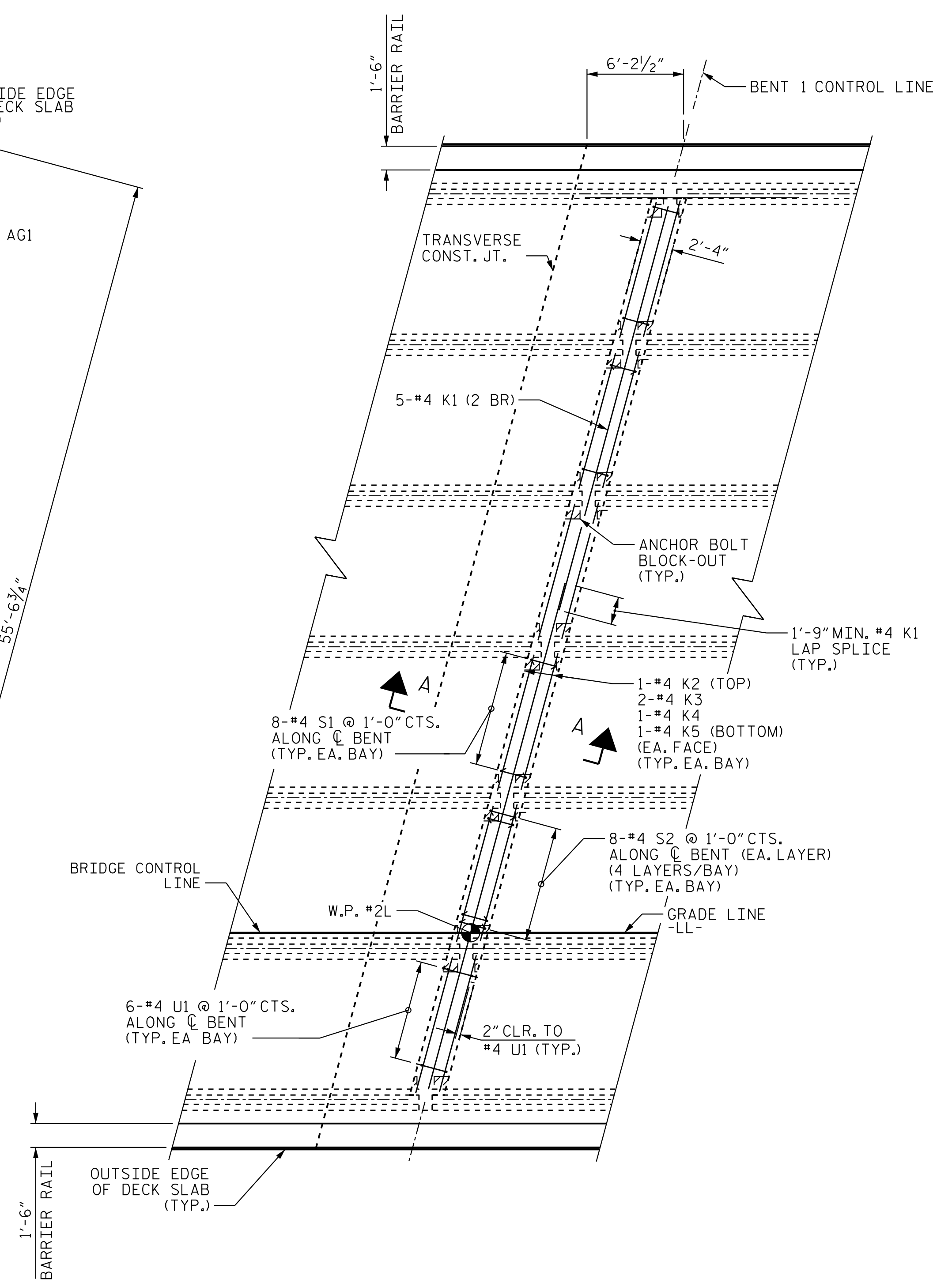
1/12/2018 5:33:38 PM jgeille
U:\Structures\Drawings\Site 5\Final\LU-2525C.SD,S*.3.dgn



**TYPICAL END BENT
DIAPHRAGM REINFORCING
DETAIL**

DETAILS AT END BENT 1 SHOWN.
DETAILS AT END BENT 2 ARE
SIMILAR BY ROTATION.

SEE "END BENT 1 DETAILS - WING WALLS" AND
"END BENT 2 DETAILS - WING WALLS" FOR
REINFORCEMENT IN WINGS



**BENT DIAPHRAGM
REINFORCING DETAIL**

BENT 1 SHOWN, BENT 2 SIMILAR

NOTES:

#4 "S" BARS MAY BE REPOSITIONED AS
FOUND NECESSARY TO CLEAR PRESTRESSED
GIRDERS.

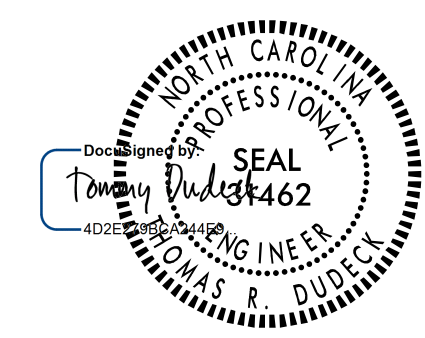
"A" BARS, "B" BARS & BARRIER RAIL
REINFORCEMENT ARE NOT SHOWN IN DECK
SLAB FOR CLARITY.

FOR SECTION A-A, SECTION B-B, & SECTION C-C, SEE
SUPERSTRUCTURE "TYPICAL SECTION (DETAILS)",
SHT. 3 OF 3.

2 BR DENOTES 2 BAR RUN.
3 BR DENOTES 3 BAR RUN.

PROJECT NO. U-2525C
GUILFORD COUNTY
STATION: 337+20.09 -L-

SHEET 3 OF 3



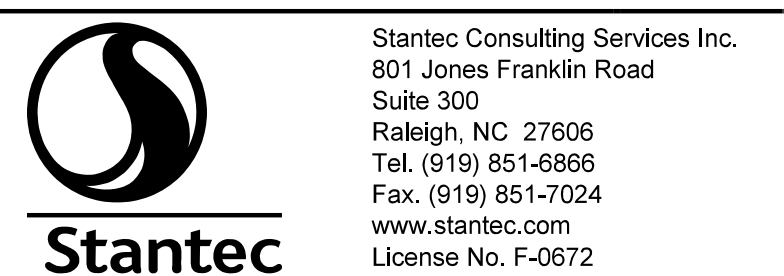
1/16/2018

STATE OF NORTH CAROLINA
DEPARTMENT OF TRANSPORTATION
RALEIGH
**SUPERSTRUCTURE
PLAN OF SPANS
DETAILS -
DIAPHRAGMS**
(LL)

REVISIONS						SHEET NO.
NO.	BY:	DATE:	NO.	BY:	DATE:	S4-10
1			3			TOTAL SHEETS
2			4			39

DOCUMENT NOT CONSIDERED
FINAL UNLESS ALL
SIGNATURES COMPLETED

STR. #4



Stantec Consulting Services Inc.
801 Jones Franklin Road
Suite 300
Raleigh, NC 27606
Tel. (919) 851-6866
Fax. (919) 851-7024
www.stantec.com
License No. F-0672

DRAWN BY: J. B. GEILE DATE: 01-26-17
CHECKED BY: N. D'AIUTO DATE: 02-15-17

DESIGN ENGINEER OF RECORD: T. R. DUDECK DATE: 01/16/18