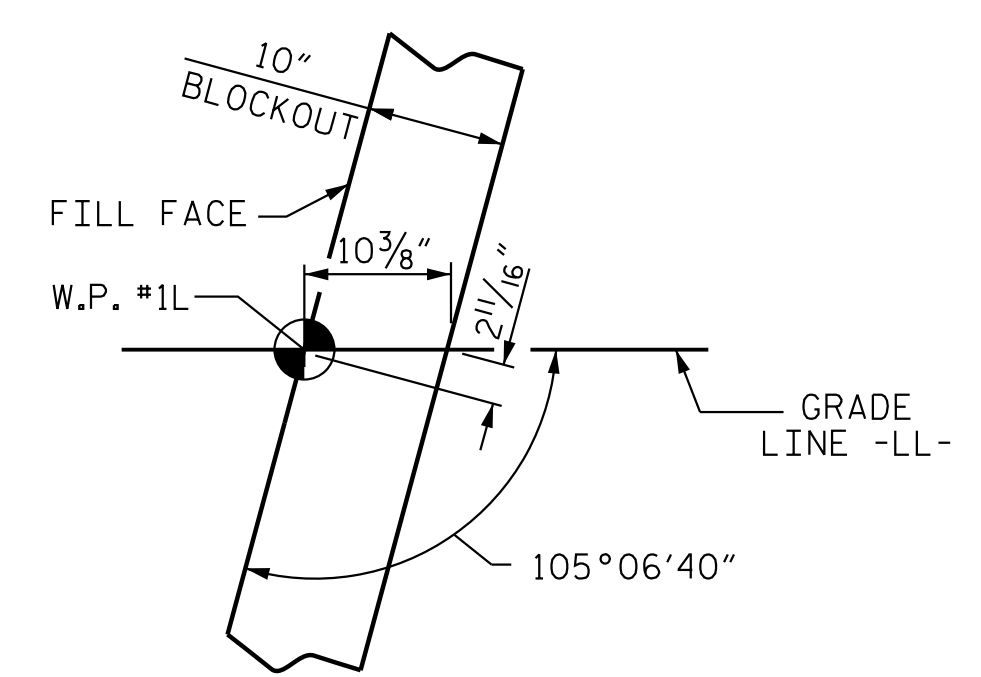
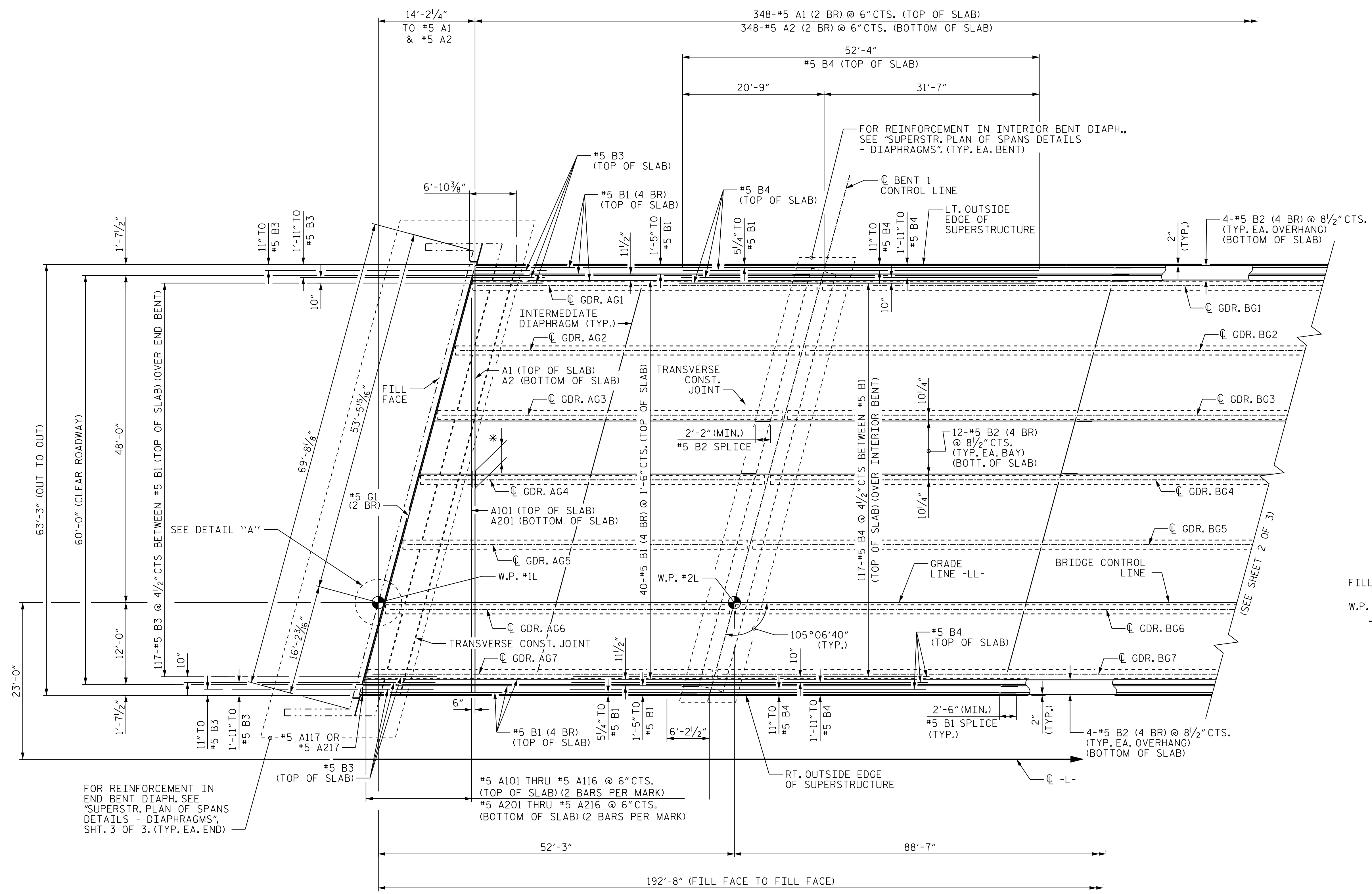
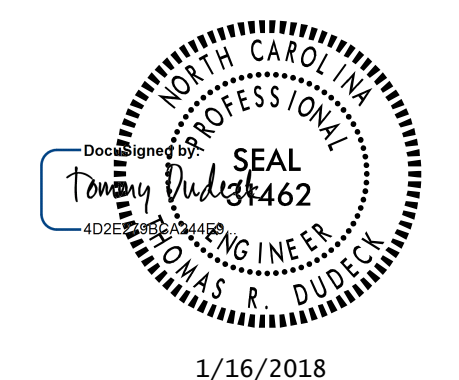


1/12/2018 5:33:53 PM Jgeille
U:\Structures\Drawings\Site 5\Final\U-2525C.SD.S*.ldgn



PLAN OF SPANS (SPAN A AND PART OF SPAN B)

(2 BR) DENOTES 2 BAR RUN. (4 BR) DENOTES 4 BAR RUN.
 FOR BARRIER RAIL DETAILS AND REINFORCING STEEL, SEE "CONCRETE BARRIER RAIL", SHEET S4-21.
 FOR POUR SEQUENCE SEE SHEET "BILL OF MATERIALS" SHEET S4-23.
 FOR TRANSVERSE CONSTRUCTION JOINT DETAIL, SEE "PLAN OF SPANS SHEET 2 OF 3", SHEET S4-9.
 * 2'-6" (MIN.) #5 A1 LAP SPLICE
 * 2'-2" (MIN.) #5 A2 LAP SPLICE



PROJECT NO. U-2525C
GUILFORD COUNTY
 STATION: 337+20.09 -L-

SHEET 1 OF 3

STATE OF NORTH CAROLINA
 DEPARTMENT OF TRANSPORTATION
 RALEIGH
 SUPERSTRUCTURE
 PLAN OF SPANS
 (LL)

REVISIONS						SHEET NO. S4-8
NO.	BY:	DATE:	NO.	BY:	DATE:	
1			3			TOTAL SHEETS 39
2			4			

Stantec Consulting Services Inc.
 801 Jones Franklin Road
 Suite 300
 Raleigh, NC 27606
 Tel. (919) 851-6866
 Fax. (919) 851-7024
 www.stantec.com
 License No. F-0672

DRAWN BY: J. B. GEILE DATE: 01-25-17
 CHECKED BY: N. D'AIUTO DATE: 02-15-17
 DESIGN ENGINEER OF RECORD: T.R. DUDECK DATE: 01/16/18

DOCUMENT NOT CONSIDERED
 FINAL UNLESS ALL
 SIGNATURES COMPLETED