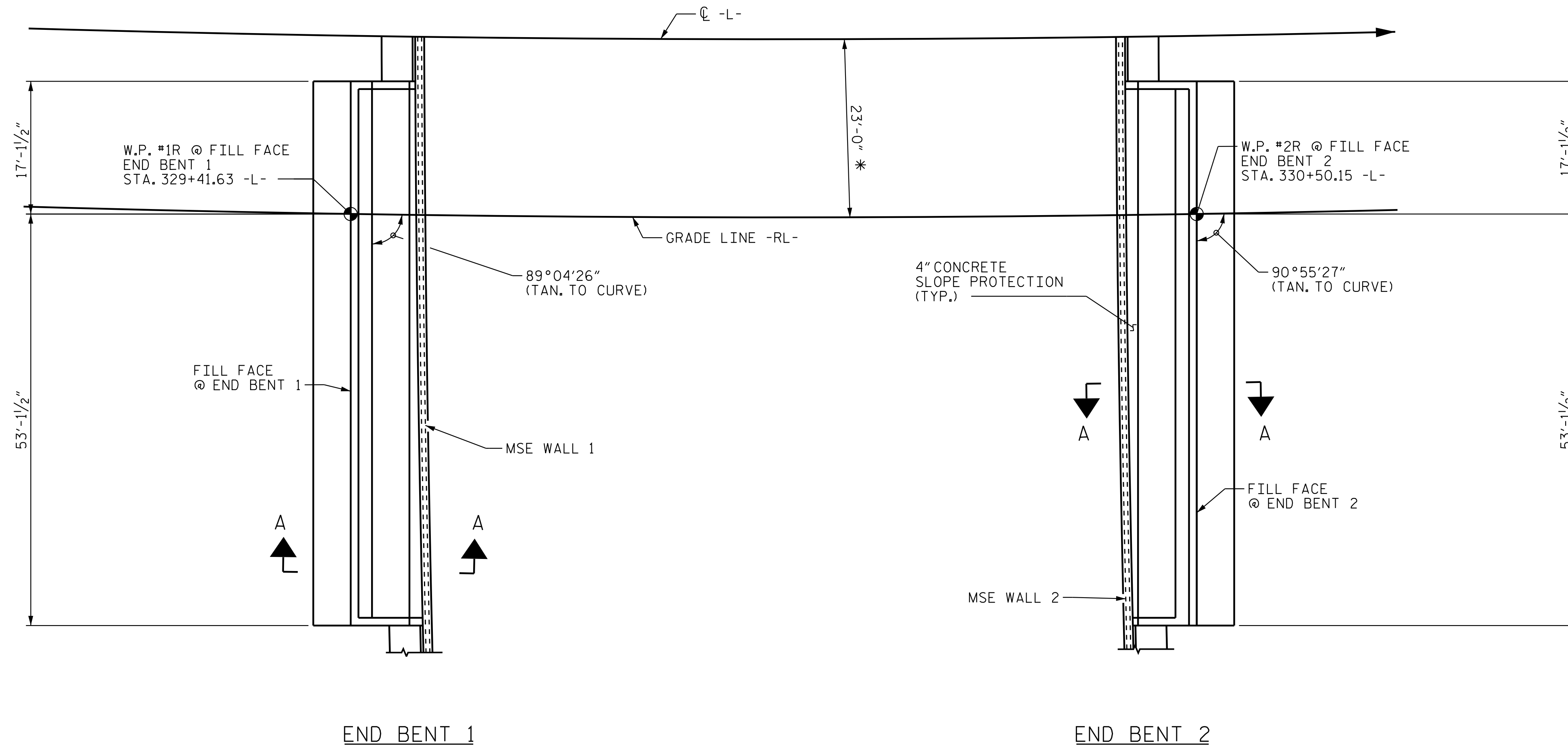


NOTES:

SLOPE PROTECTION SHALL BE PLACED UNDER THE ENDS OF THE BRIDGE AS SHOWN IN THE DETAILS. STRAIGHT EDGING WILL NOT BE REQUIRED UNLESS, IN THE OPINION OF THE ENGINEER, VISUAL INSPECTION INDICATES A NEED FOR IT. MEASUREMENT AND PAYMENT SHALL BE AS PRESCRIBED IN SECTION 462 OF THE STANDARD SPECIFICATIONS.

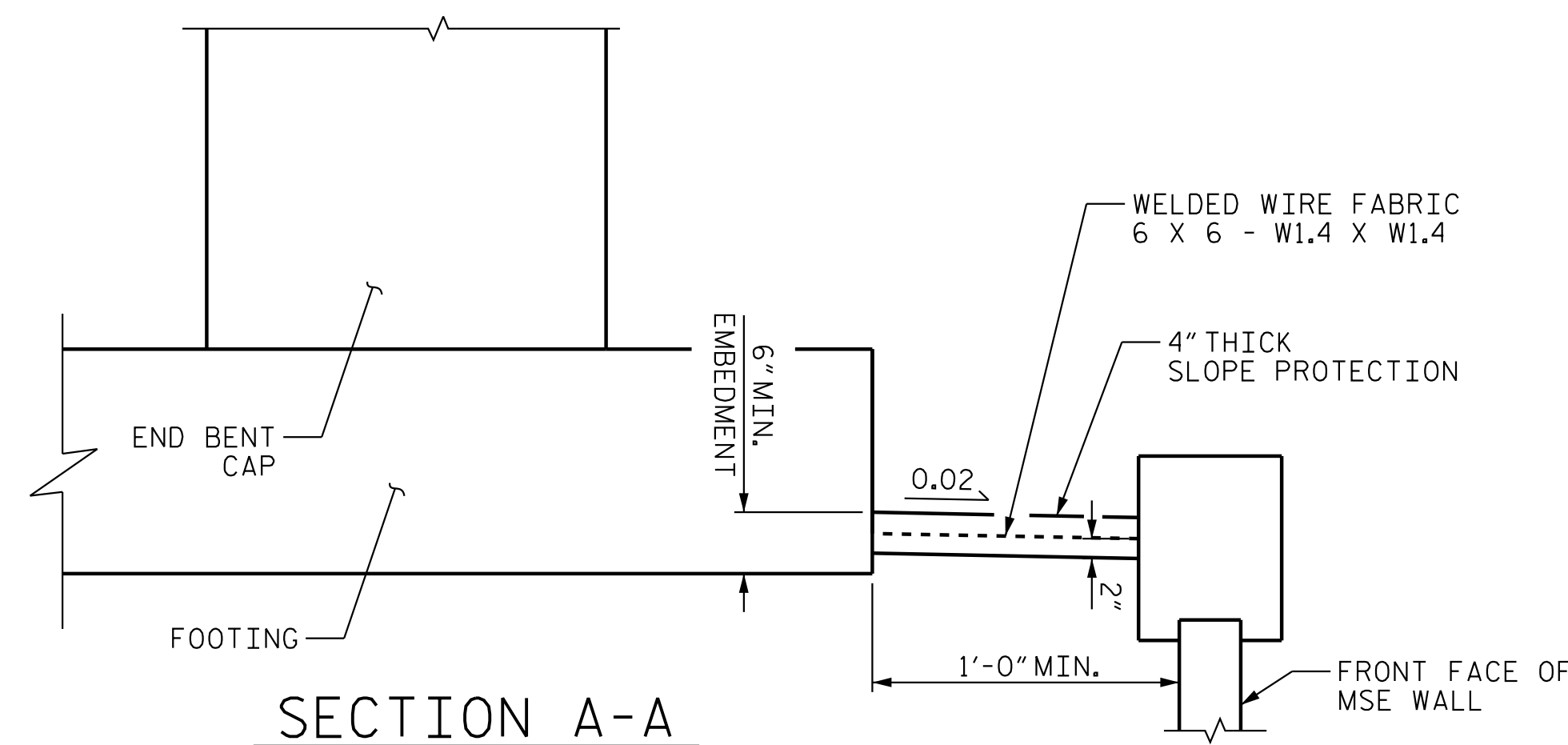
SLOPE PROTECTION SHALL CONSIST OF 4" CAST-IN-PLACE CONCRETE PAVING AS SHOWN IN THE DETAILS ON THIS SHEET. CONCRETE SHALL BE CLASS "B". THE CONCRETE SURFACE SHALL BE FLOATED WITH A WOODEN FLOAT AND FINISHED. WELDED WIRE FABRIC REINFORCING SHALL BE 6 X 6 - W1.4 X W1.4 X 60" WIDE. THE COST OF THE WELDED WIRE FABRIC SHALL BE INCLUDED IN THE CONTRACT UNIT PRICE BID PER SQUARE YARD FOR SLOPE PROTECTION.



BRIDGE @ STA. 329+95.42 -L-	4" SLOPE PROTECTION	WELDED WIRE FABRIC 60 INCHES WIDE
	SQ. YDS.	APPROX. L.F.
END BENT 1	9	71
END BENT 2	10	71
TOTAL	19	142

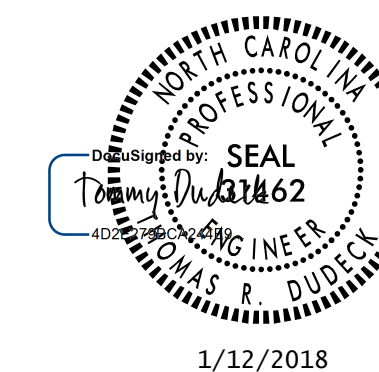
PLAN OF SLOPE PROTECTION

* DENOTES RADIAL DIMENSION



SECTION A-A

PROJECT NO. U-2525C
GUILFORD COUNTY
 STATION: 329+95.42 -L-



STATE OF NORTH CAROLINA
 DEPARTMENT OF TRANSPORTATION
 RALEIGH

**SLOPE PROTECTION
 DETAILS**

(RL)

REVISIONS						SHEET NO.
NO.	BY:	DATE:	NO.	BY:	DATE:	S3-27
1			3			TOTAL SHEETS
2			4			29

DOCUMENT NOT CONSIDERED
 FINAL UNLESS ALL
 SIGNATURES COMPLETED

\$FILES \$ DATES \$ TIMES \$ SUBSERS \$

Stantec Consulting Services Inc.
 801 Jones Franklin Road
 Suite 300
 Raleigh, NC 27606
 Tel. (919) 851-6866
 Fax. (919) 851-7024
 www.stantec.com
 License No. F-0672

DRAWN BY : N. D'AIUTO DATE : 01/08/18 DESIGN ENGINEER OF RECORD : T. R. DUDECK DATE : 01/12/18
 CHECKED BY : R.F.DeCOLA DATE : 01/08/18