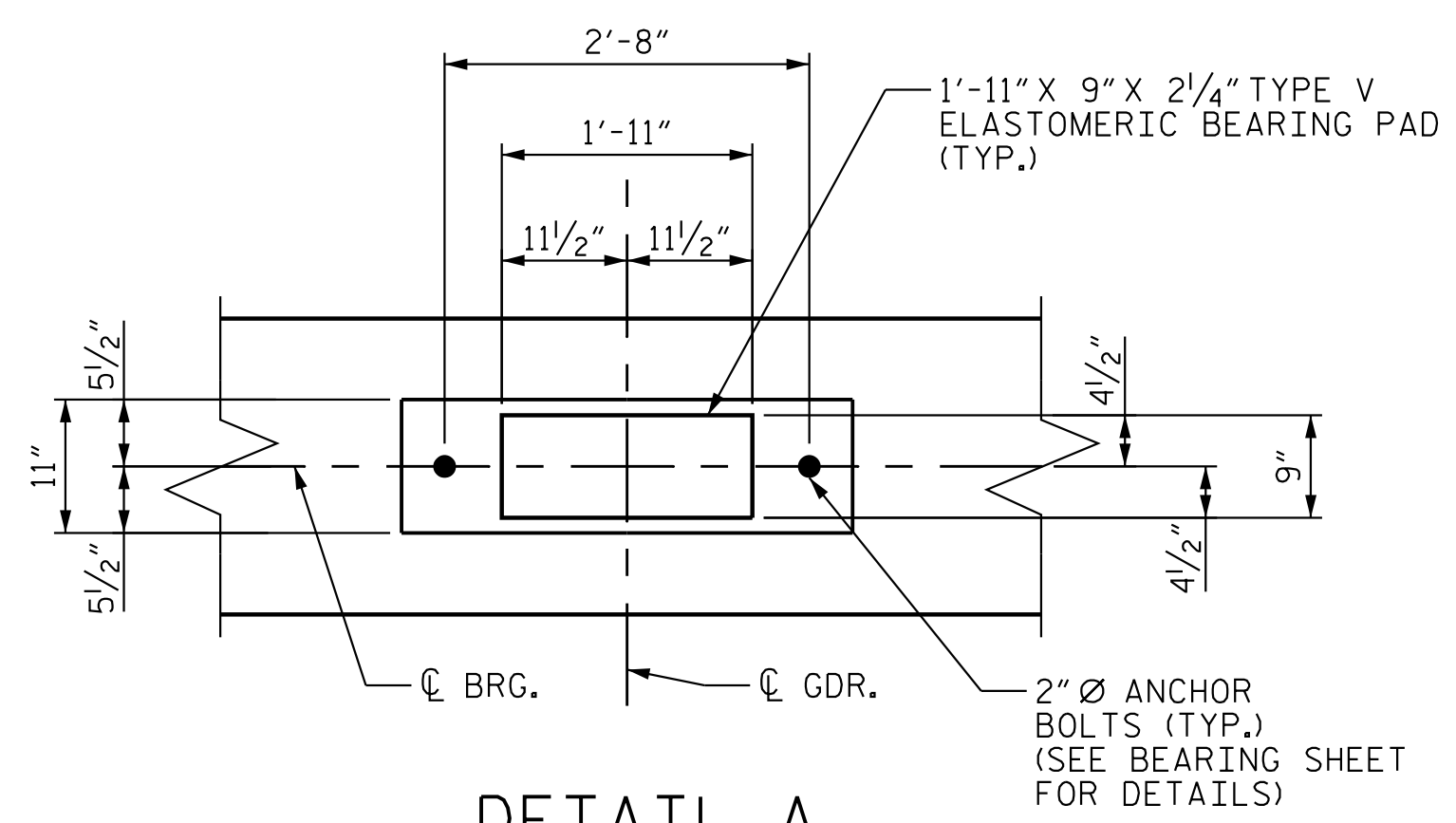


BAGGED STONE AND PIPE SHALL BE PLACED IMMEDIATELY AFTER COMPLETION OF END BENT EXCAVATION. PIPE MAY BE EITHER CONCRETE, CORRUGATED STEEL, CORRUGATED ALUMINUM ALLOY, OR CORRUGATED PLASTIC. PERFORATED PIPE WILL NOT BE ALLOWED.

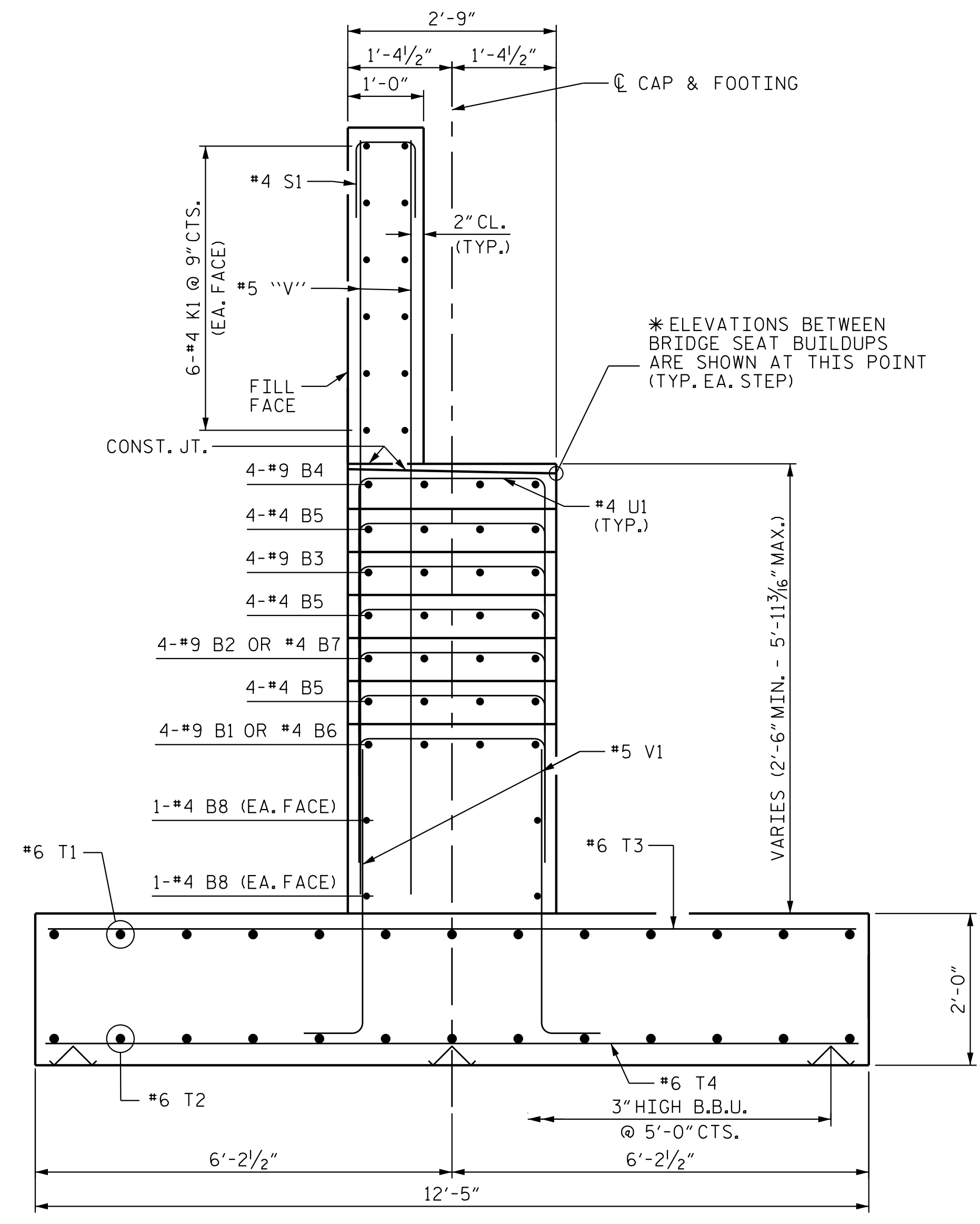
BAGGED STONE SHALL REMAIN IN PLACE UNTIL THE ENGINEER DIRECTS THAT IT BE REMOVED. THE CONTRACTOR SHALL REMOVE AND DISPOSE OF SILT ACCUMULATIONS AT BAGGED STONE WHEN SO DIRECTED BY THE ENGINEER. BAGS SHALL BE REMOVED AND REPLACED WHENEVER THE ENGINEER DETERMINES THAT THEY HAVE DETERIORATED AND LOST THEIR EFFECTIVENESS.

NO SEPARATE PAYMENT WILL BE MADE FOR THIS WORK AND THE ENTIRE COST OF THIS WORK SHALL BE INCLUDED IN THE UNIT CONTRACT PRICE BID FOR THE SEVERAL PAY ITEMS.

TEMPORARY DRAINAGE AT END BENT



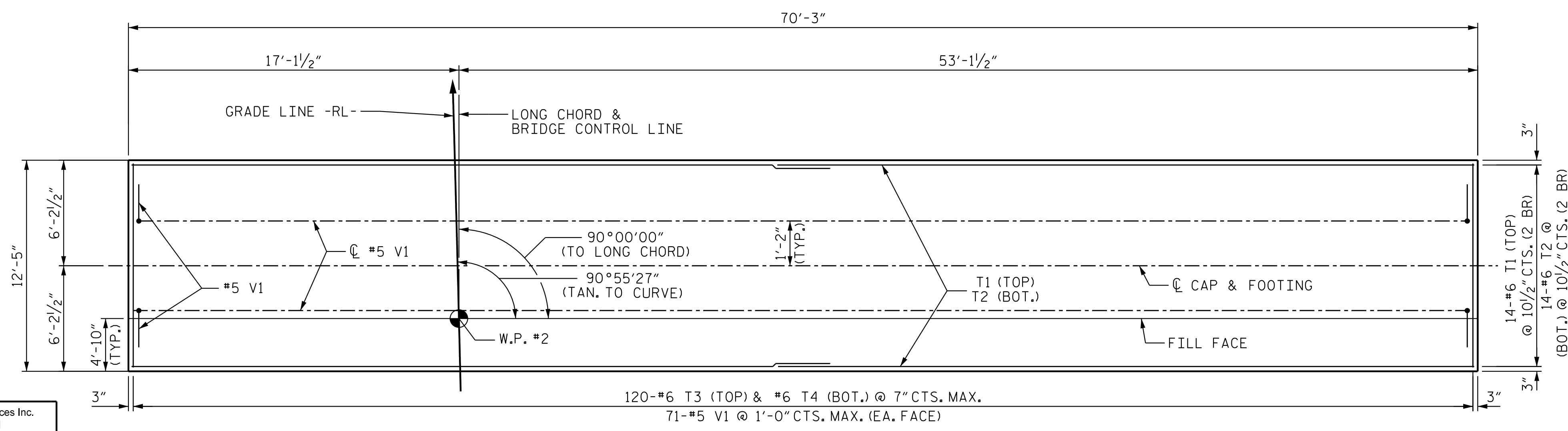
DETAIL A



SECTION A-A

BAR TYPES		BILL OF MATERIAL				
		END BENT 2				
BAR NO.	SIZE	TYPE	LENGTH	WEIGHT		
B1	4 #9	STR.	32'-7"	443		
B2	4 #9	STR.	27'-9"	377		
B3	4 #9	STR.	27'-1"	368		
B4	4 #9	STR.	8'-1"	110		
B5	12 #4	STR.	9'-4"	75		
B6	8 #4	STR.	21'-1"	113		
B7	4 #4	STR.	20'-9"	55		
B8	12 #4	STR.	24'-6"	196		
H1	26 #4	1	8'-10"	153		
H2	30 #5	1	9'-10"	308		
K1	36 #4	STR.	24'-6"	589		
K2	8 #4	STR.	2'-8"	14		
S1	65 #4	2	6'-10"	297		
T1	28 #6	STR.	36'-5"	1532		
T2	28 #6	STR.	36'-5"	1532		
T3	120 #6	STR.	12'-1"	2178		
T4	120 #6	STR.	12'-1"	2178		
U1	112 #4	2	5'-5"	405		
V1	142 #5	1	4'-11"	728		
V2	32 #5	STR.	9'-5"	314		
V3	32 #5	STR.	8'-6"	284		
V4	32 #5	STR.	7'-7"	253		
V5	34 #5	STR.	6'-8"	236		
V6	22 #5	STR.	7'-11"	182		
V7	22 #5	STR.	11'-6"	288		
V8	4 #5	STR.	4'-0"	17		
REINFORCING STEEL				LBS.	13,225	
CLASS A CONCRETE BREAKDOWN						
POUR #1 - FOOTING				C.Y.	64.6	
POUR #2 - (CAP & BOT. WINGS)				C.Y.	31.6	
POUR #3 - (TOP OF WINGS & BACKWALL)				C.Y.	17.1	
CLASS A CONCRETE TOTAL				C.Y.	113.3	

ALL BAR DIMENSIONS ARE OUT TO OUT.



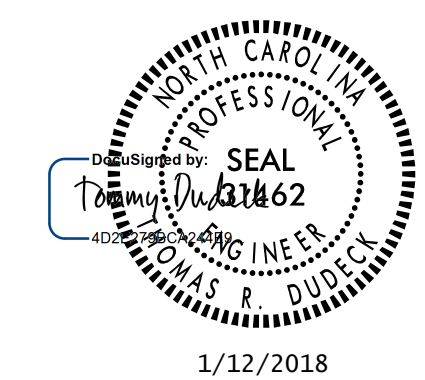
PLAN OF FOOTING

PROJECT NO. U-2525C
 GUILFORD COUNTY
 STATION: 329+95.42 -L-

SHEET 3 OF 3

STATE OF NORTH CAROLINA
 DEPARTMENT OF TRANSPORTATION
 RALEIGH

END BENT 2 DETAILS
 (RL)



1/12/2018

DOCUMENT NOT CONSIDERED FINAL UNLESS ALL SIGNATURES COMPLETED

REVISIONS						SHEET NO.	
NO.	BY:	DATE:	NO.	BY:	DATE:	S3-26	
1			3			TOTAL SHEETS	28
2			4				

STR. #3

1/9/2018 10:48:25 AM jgelle U:\Structures\Drawings\Site\WBL\RL\U-2525C_SD.E*2_3.dgn

Stantec Consulting Services Inc.
 801 Jones Franklin Road
 Suite 300
 Raleigh, NC 27606
 Tel. (919) 851-6866
 Fax. (919) 851-7024
 www.stantec.com
 License No. F-0672

DRAWN BY: N. DAIUTO DATE: 10/14/16
 CHECKED BY: M. B. ISENHOUR DATE: 01/09/17
 DESIGN ENGINEER OF RECORD: T. R. DUDECK DATE: 01/12/18