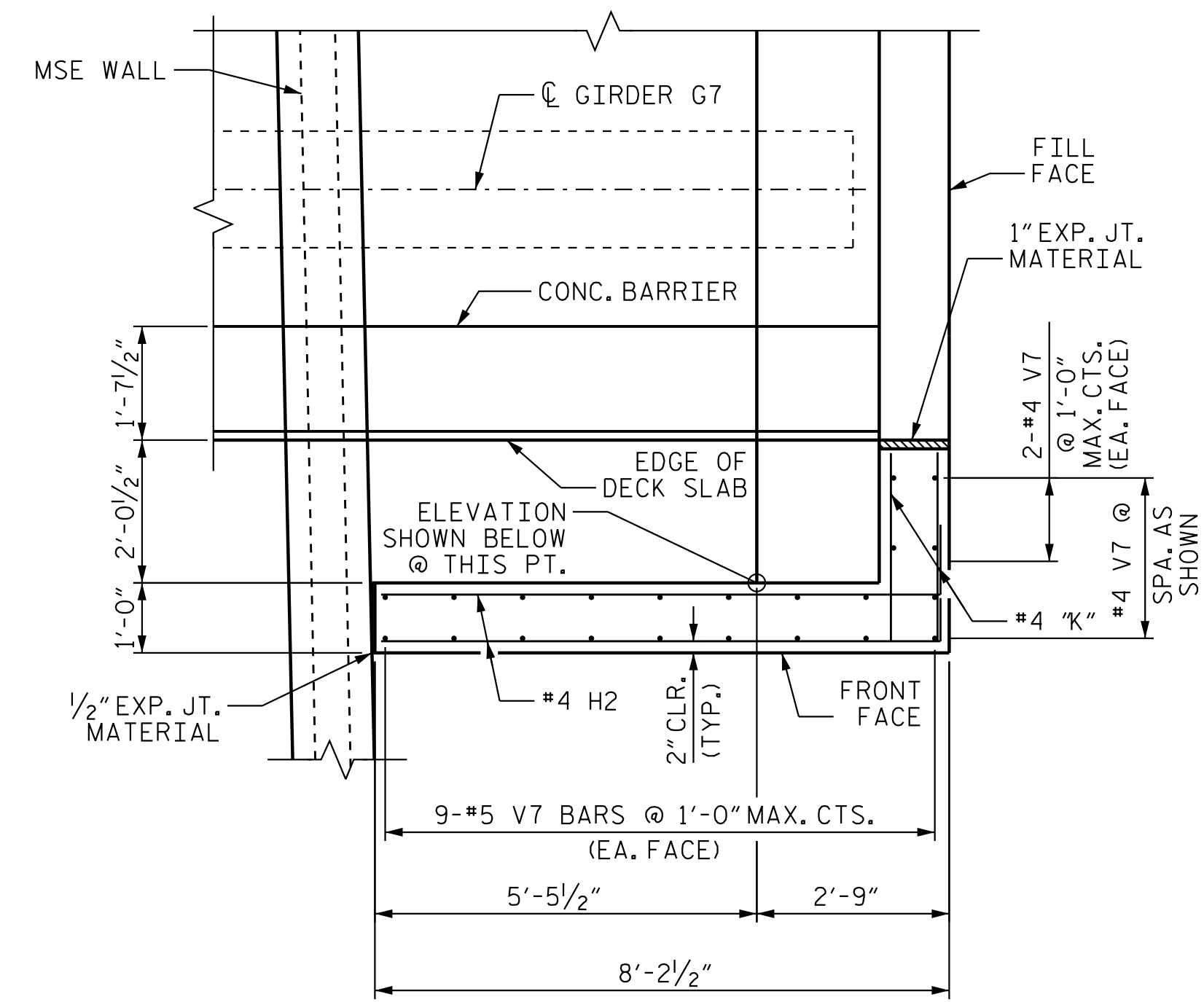
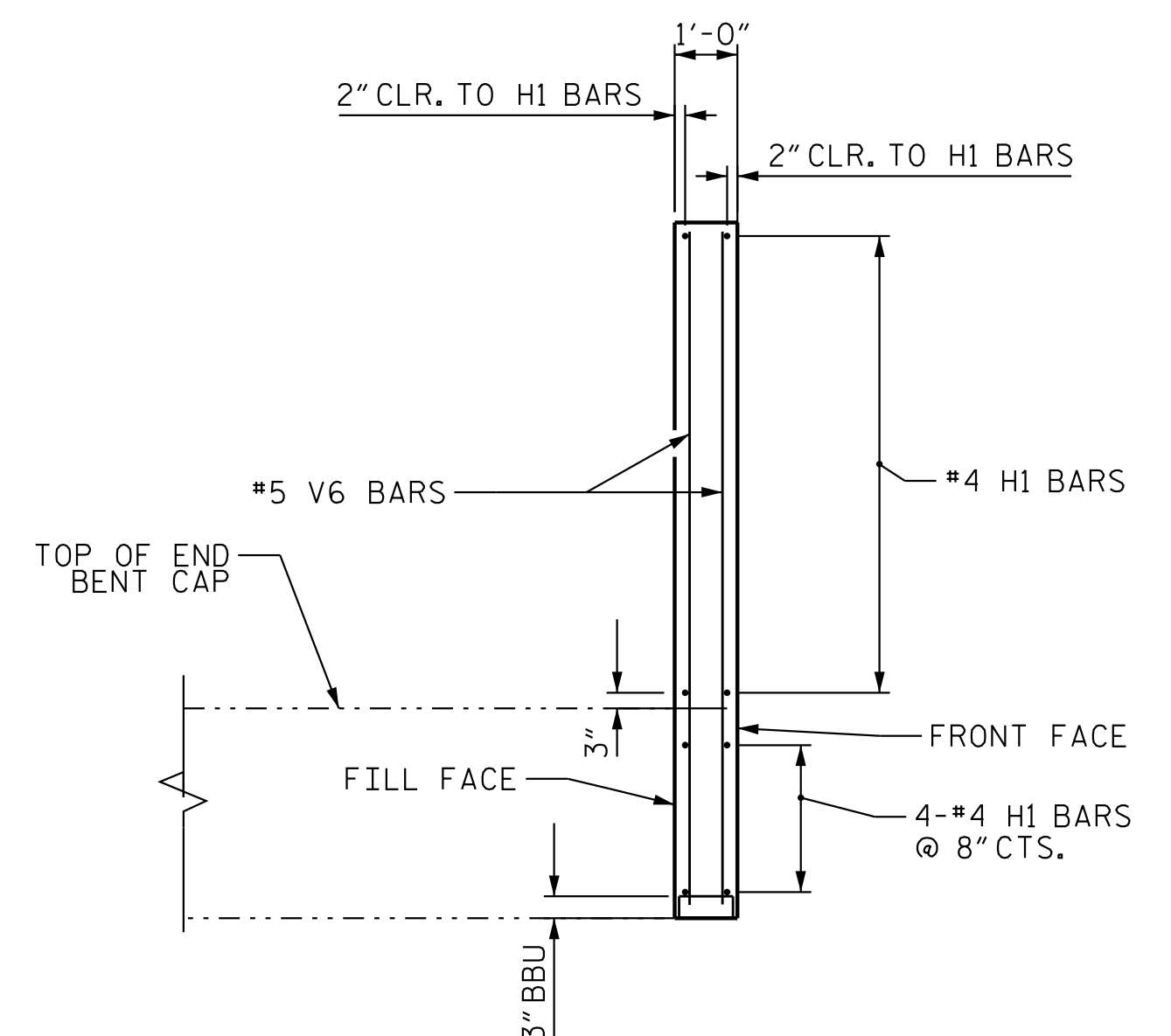


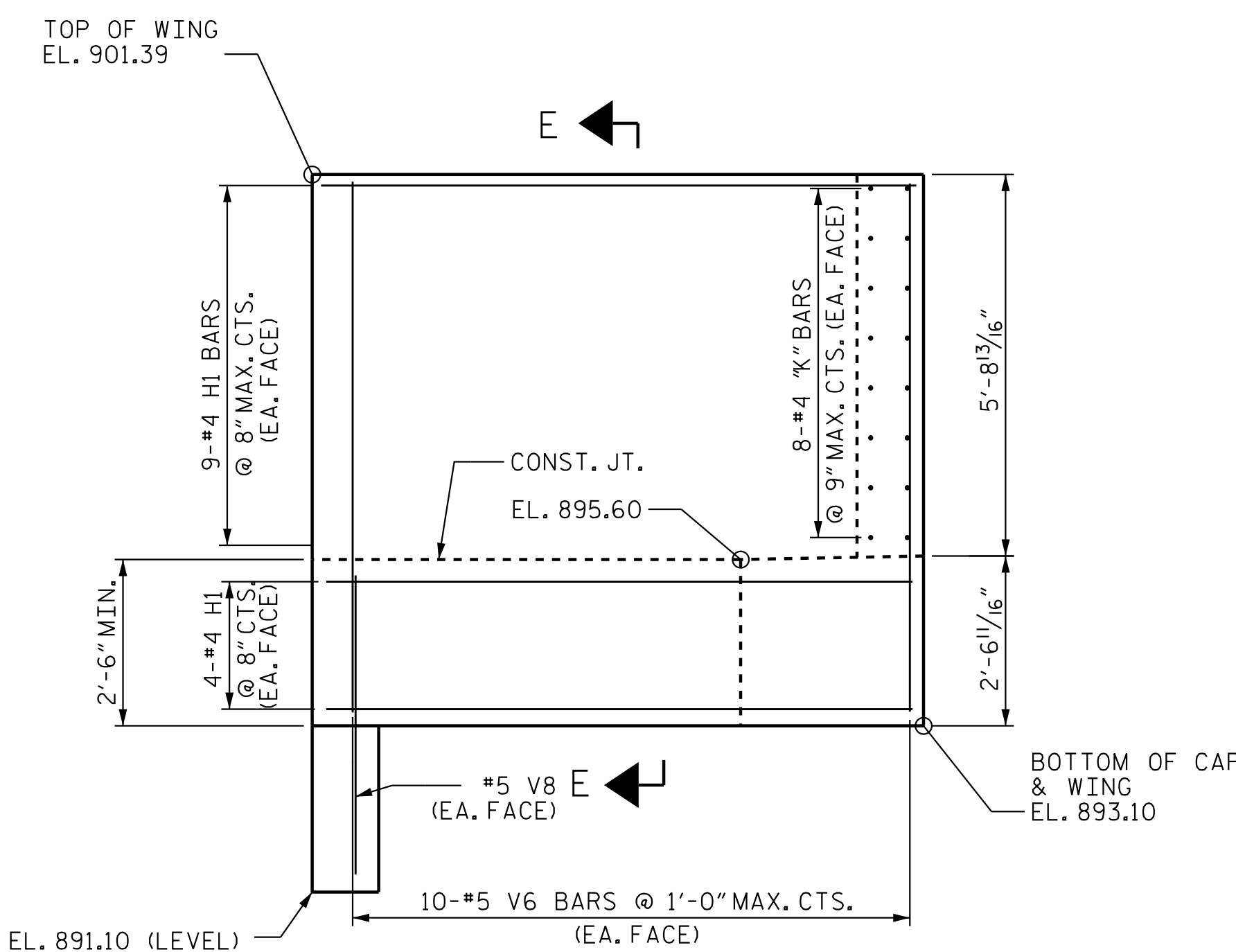
PLAN OF LEFT WING (W1)



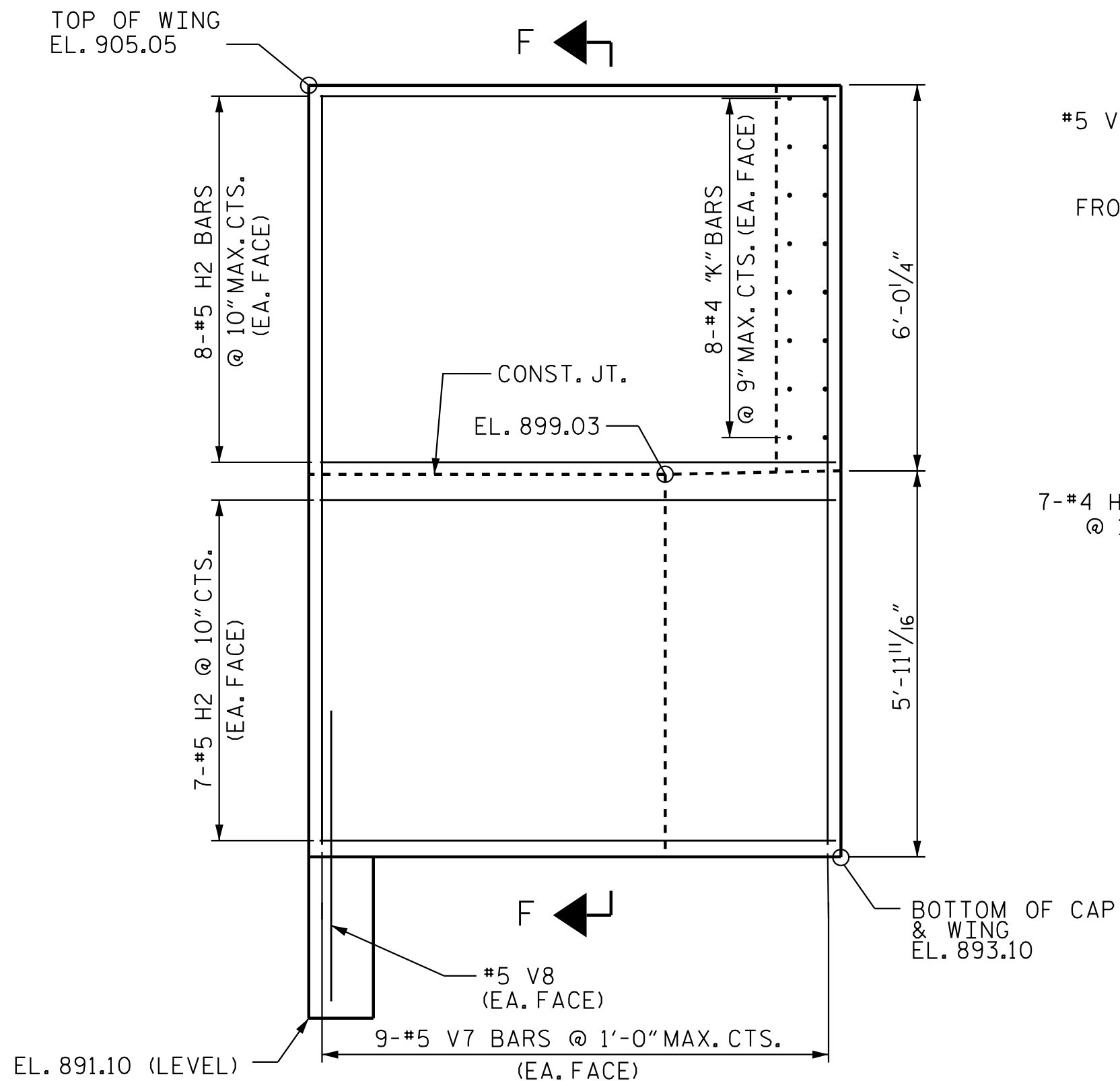
PLAN OF RIGHT WING (W2)



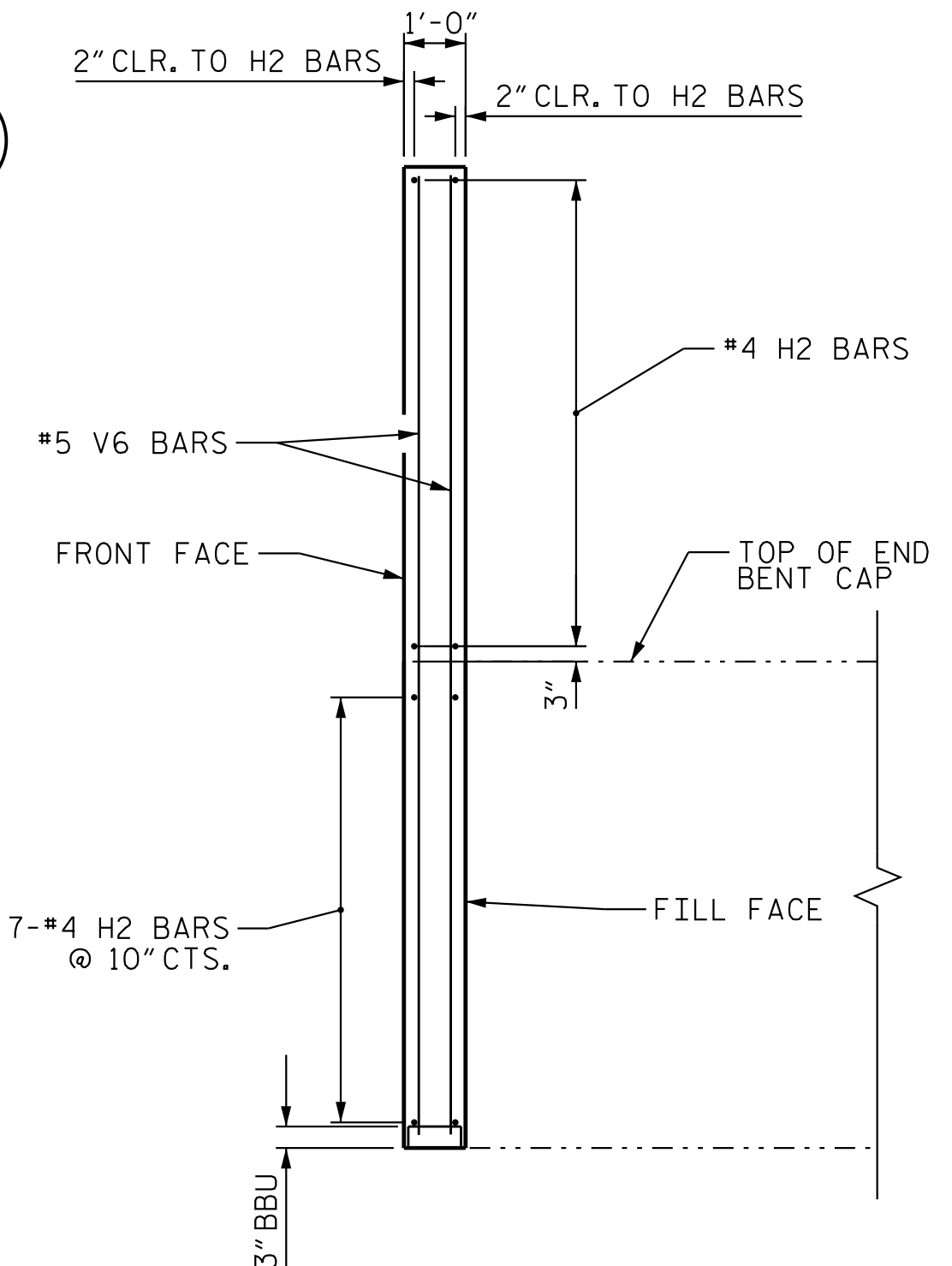
SECTION E-E



ELEVATION OF LEFT WING (W1)



ELEVATION OF RIGHT WING (W2)



SECTION F-F

NOTE: TOP SURFACE OF END BENT CAP BETWEEN EDGE OF DECK SLAB AND END OF CAP SHALL BE SLOPED TRANSVERSELY FROM FRONT FACE TO FILL FACE AT A RATE OF 1/4\"/>

PROJECT NO. U-2525C
 GUILFORD COUNTY
 STATION: 329+95.42 -L-

SHEET 2 OF 3

STATE OF NORTH CAROLINA
 DEPARTMENT OF TRANSPORTATION
 RALEIGH

END BENT 2 WING
 DETAILS
 (RL)



1/12/2018

DOCUMENT NOT CONSIDERED
 FINAL UNLESS ALL
 SIGNATURES COMPLETED

REVISIONS						SHEET NO.
NO.	BY:	DATE:	NO.	BY:	DATE:	S3-25
1			3			TOTAL SHEETS
2			4			29

1/9/2018 10:48:22:4682 AM jgeille
 U:\Structures\Drawings\Site \NWBL\RL\U-2525C_SD.E*2.dgn

Stantec Consulting Services Inc.
 801 Jones Franklin Road
 Suite 300
 Raleigh, NC 27606
 Tel. (919) 851-6866
 Fax. (919) 851-7024
 www.stantec.com
 License No. F-0672

DRAWN BY: J. GEILE DATE: 10/14/16
 CHECKED BY: N. D'AIUTO DATE: 01/04/17
 DESIGN ENGINEER OF RECORD: T. R. DUDECK DATE: 01/12/18