

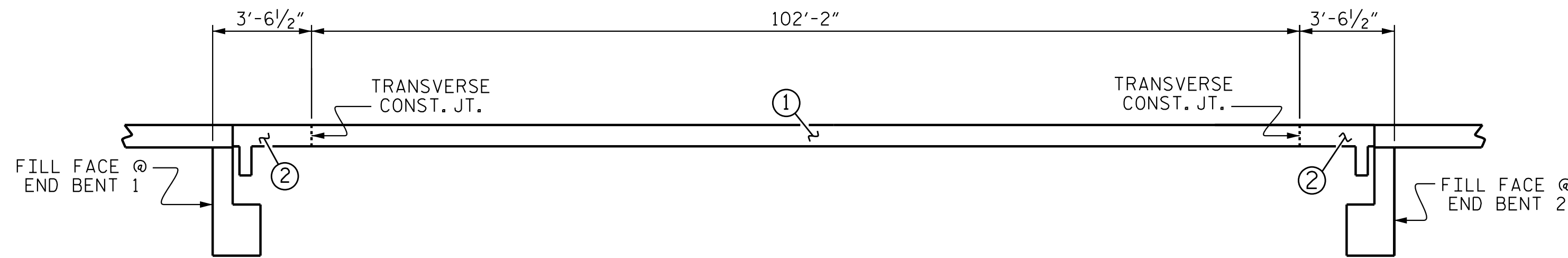
LAYOUT FOR COMPUTING AREA OF REINFORCED CONCRETE DECK SLAB (SQ. FT. 6,865)

BAR TYPE				BILL OF MATERIAL		
BAR	NO.	SIZE	TYPE	LENGTH	WEIGHT	
*A1	428	#5	STR	33'-2"	14806	
A2	428	#5	STR	33'-0"	14731	
*B1	172	#4	STR	28'-2"	3236	
B2	160	#5	STR	54'-6"	9095	
G1	4	#5	STR	33'-0"	137	
*J1	122	#4	4	1'-5"	116	
K1	8	#8	2	14'-1"	301	
K2	20	#8	3	21'-5"	1143	
S1	96	#5	1	6'-2"	618	
REINFORCING STEEL				LBS.	26,025	
* EPOXY COATED REINFORCING STEEL				LBS.	18,158	

GROOVING BRIDGE FLOORS	
APPROACH SLABS	2,758 SQ. FT.
BRIDGE DECK	6,136 SQ. FT.
TOTAL	8,894 SQ. FT.

SUPERSTRUCTURE BILL OF MATERIAL			
	CLASS AA CONCRETE (C.Y.)	REINFORCING STEEL (LBS.)	EPOXY COATED REINFORCING STEEL (LBS.)
POUR #1	210.1	26,025	18,158
POUR #2	20.7		
TOTAL **	230.8	26,025	18,158

\*\* QUANTITIES FOR CONCRETE BARRIER RAIL ARE NOT INCLUDED



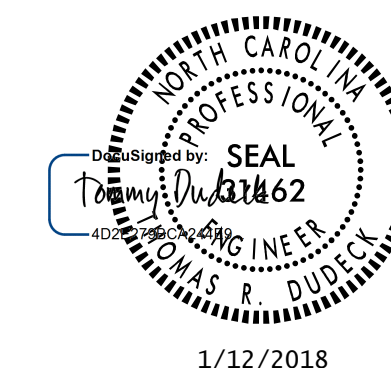
DECK POURING SEQUENCE

⊕ = INDICATES THE NUMBER AND DIRECTION OF POUR.

SUPERSTRUCTURE REINFORCING STEEL LENGTHS ARE BASED ON THE FOLLOWING MINIMUM SPLICE LENGTHS

BAR SIZE	SUPERSTRUCTURE EXCEPT APPROACH SLABS, PARAPET, AND BARRIER RAIL		APPROACH SLABS		PARAPET AND BARRIER RAIL
	EPOXY COATED	UNCOATED	EPOXY COATED	UNCOATED	
#4	2'-0"	1'-9"	2'-0"	1'-9"	2'-9"
#5	2'-6"	2'-2"	2'-6"	2'-2"	3'-5"
#6	3'-0"	2'-7"	3'-10"	2'-7"	4'-4"
#7	5'-3"	3'-6"			
#8	6'-10"	4'-7"			

PROJECT NO. U-2525C  
 GUILFORD COUNTY  
 STATION: 329+95.42 -L-



STATE OF NORTH CAROLINA  
 DEPARTMENT OF TRANSPORTATION  
 RALEIGH  
 SUPERSTRUCTURE  
 BILL OF MATERIAL  
 (RL)

REVISIONS						TOTAL SHEETS
NO.	BY:	DATE:	NO.	BY:	DATE:	29
1			3			29
2			4			

DOCUMENT NOT CONSIDERED FINAL UNLESS ALL SIGNATURES COMPLETED

STR. #3



DRAWN BY: J. HAGENBUSH DATE: 12/09/16  
 CHECKED BY: N. D'AIUTO DATE: 01/03/17  
 DESIGN ENGINEER OF RECORD: T. R. DUDECK DATE: 01/12/18

U:\Structures\Drawings\Site \WBL\RL\U-2525C\_SD.BOM.dgn 1/9/2018 10:44:45 AM jhagenbush