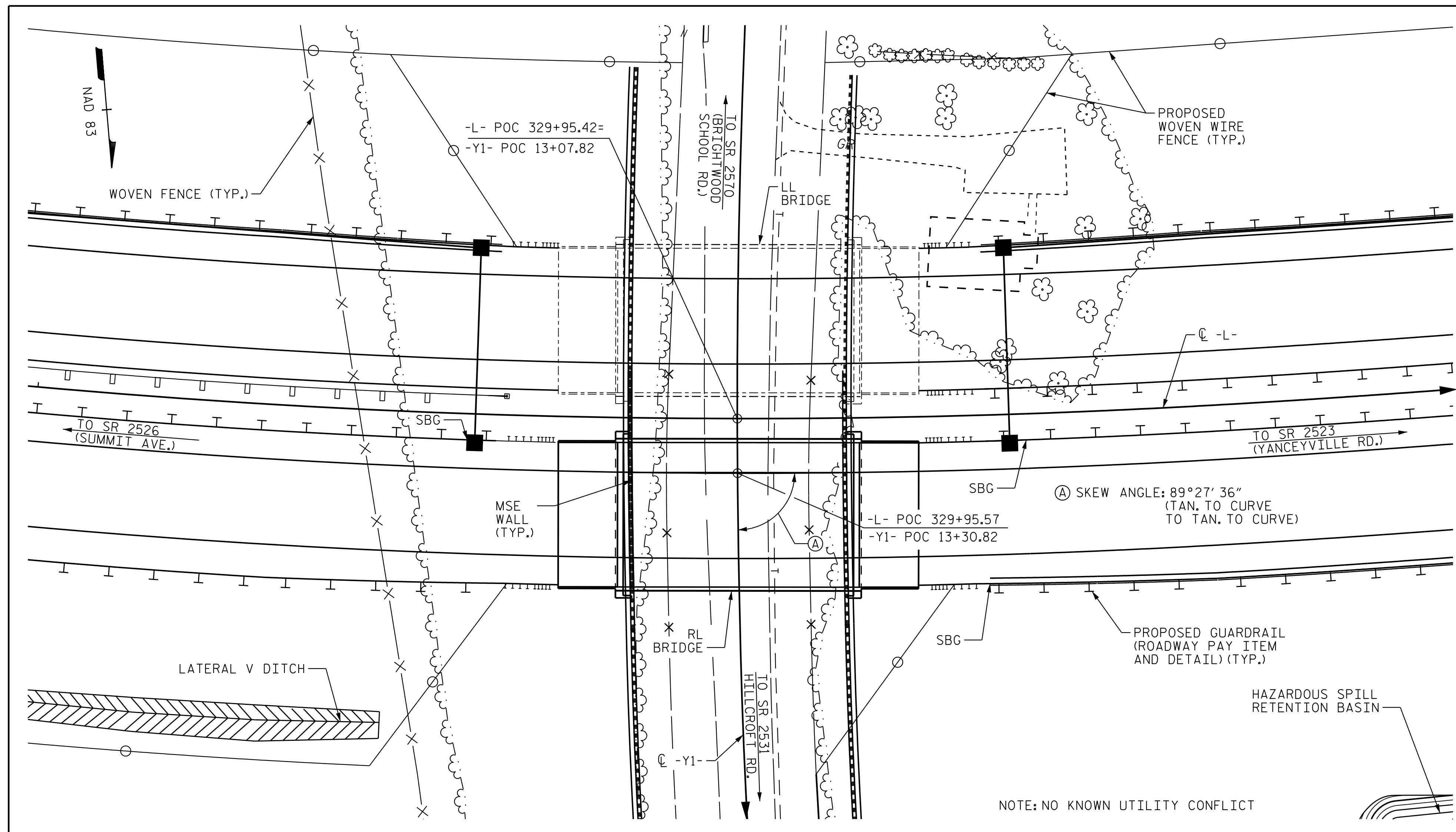


BENCH MARK #3 : N 875011, E 1776909 -BY1A- STA. 11+32.41, 111.18' LEFT, ELEV. 853.86, RR SPIKE SET IN 18" POPLAR



LOCATION SKETCH

NOTES

- ASSUMED LIVE LOAD = HL-93 OR ALTERNATE LOADING.
- THIS BRIDGE HAS BEEN DESIGNED IN ACCORDANCE WITH THE AASHTO LRFD BRIDGE DESIGN SPECIFICATIONS.
- THIS BRIDGE IS LOCATED IN SEISMIC ZONE 1.
- FOR OTHER DESIGN DATA AND GENERAL NOTES, SEE SHEET SN.
- FOR SUBMITTAL OF WORKING DRAWINGS, SEE SPECIAL PROVISIONS.
- FOR FALSEWORK AND FORMWORK, SEE SPECIAL PROVISIONS.
- FOR CRANE SAFETY, SEE SPECIAL PROVISIONS.
- FOR GROUT FOR STRUCTURES, SEE SPECIAL PROVISIONS.
- REMOVABLE FORMS MAY BE USED IN LIEU OF METAL STAY-IN-PLACE FORMS IN ACCORDANCE WITH ARTICLE 420-3 OF THE STANDARD SPECIFICATIONS.
- FOR EROSION CONTROL MEASURES, SEE EROSION CONTROL PLANS.
- THE ELEVATION AND CLEARANCE SHOWN ON THE PLANS AT THE POINT(S) OF MINIMUM VERTICAL CLEARANCE ARE FROM THE BEST INFORMATION AVAILABLE. PRIOR TO BEGINNING BRIDGE CONSTRUCTION, VERIFY THE ELEVATION(S) ON THE EXISTING PAVEMENT AND CHECK THE CLEARANCE. REPORT ANY VARIATIONS TO THE ENGINEER. ANY PLAN REVISIONS NECESSARY TO ACHIEVE THE REQUIRED MINIMUM VERTICAL CLEARANCE WILL BE PROVIDED BY THE DEPARTMENT.
- FOR MAINTENANCE AND PROTECTION OF TRAFFIC BENEATH PROPOSED STRUCTURE, SEE SPECIAL PROVISIONS.
- NEEDLE BEAMS WILL NOT BE ALLOWED UNLESS OTHERWISE CALLED FOR ON THE PLANS OR APPROVED BY THE ENGINEER.
- PRESTRESSED CONCRETE DECK PANELS MAY BE USED IN LIEU OF METAL STAY-IN-PLACE FORMS IN ACCORDANCE WITH ARTICLE 420-3 OF THE STANDARD SPECIFICATIONS.
- THE CLASS AA CONCRETE IN THE BRIDGE DECK SHALL CONTAIN FLY ASH OR GROUND GRANULATED BLAST FURNACE SLAG AT THE SUBSTITUTION RATE SPECIFIED IN ARTICLE 1024-1 AND IN ACCORDANCE WITH ARTICLES 1024-5 AND 1024-6 OF THE STANDARD SPECIFICATIONS. NO PAYMENT WILL BE MADE FOR THIS SUBSTITUTION AS IT IS CONSIDERED INCIDENTAL TO THE COST OF THE REINFORCED CONCRETE DECK SLAB.

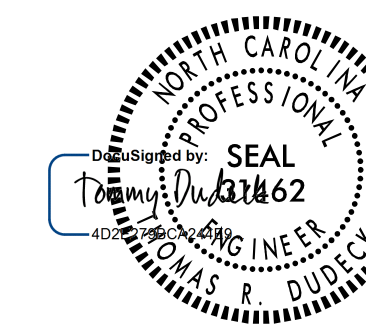
TOTAL BILL OF MATERIAL											
	REINFORCED CONCRETE DECK SLAB	GROOVING BRIDGE FLOORS	CLASS A CONCRETE	BRIDGE APPROACH SLABS	REINFORCING STEEL	54" PRESTRESSED CONCRETE GIRDERS	CONCRETE BARRIER RAIL	4" SLOPE PROTECTION	ELASTOMERIC BEARINGS	EXPANSION JOINT SEALS	
	SQ.FT.	SQ.FT.	CU.YDS.	LUMP SUM	LBS.	NO.	LIN.FT.	LIN.FT.	SO. YDS.	LUMP SUM	LUMP SUM
SUPERSTRUCTURE	6,865	8,894		LUMP SUM		7	745.5	253.71		LUMP SUM	LUMP SUM
END BENT 1			113.3		13,225				9		
END BENT 2			113.3		13,225				10		
TOTAL	6,865	8,894	226.6	LUMP SUM	26,450	7	745.5	253.71	19	LUMP SUM	LUMP SUM

PROJECT NO. U-2525C
 GUILFORD COUNTY
 STATION: 329+95.42 -L-

SHEET 4 OF 4

STATE OF NORTH CAROLINA
 DEPARTMENT OF TRANSPORTATION
 RALEIGH

GENERAL DRAWING
 FOR BRIDGE ON GEL I-85 BYPASS (-L-) OVER LEES CHAPEL ROAD (SR 2359)-Y1- BETWEEN SR 2526 (SUMMIT RD) AND SR 2303 (LAWNDALE DR)
 (RL)



1/12/2018

DOCUMENT NOT CONSIDERED FINAL UNLESS ALL SIGNATURES COMPLETED

REVISIONS						SHEET NO.
NO.	BY:	DATE:	NO.	BY:	DATE:	S3-4
1			3			TOTAL SHEETS
2			4			29

STR. #3



DRAWN BY : J. HAGENBUSH DATE : 12/09/16
 CHECKED BY : M. B. ISENHOUR DATE : 01/06/17
 DESIGN ENGINEER OF RECORD : T. R. DUDECK DATE : 01/12/18

1/9/2018 10:47:58 AM jgelle
 U:\Structures\Drawings\Site \WBL\RL\U-2525C_SD_GD_2.dgn