

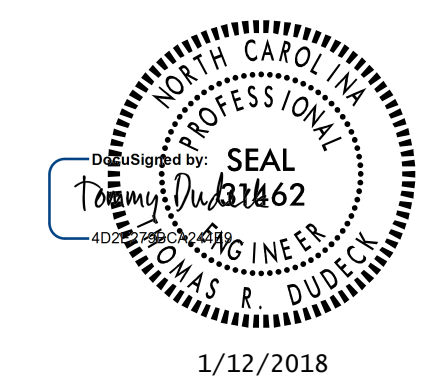
LONG CHORD LAYOUT
NOTE: END BENTS 1 & 2 ARE PARALLEL

□ ARC LENGTH ALONG GRADE LINE -RL-
* RADIAL DIMENSION

PROJECT NO. U-2525C
GUILFORD COUNTY
STATION: 329+95.42 -L-

SHEET 3 OF 4

STATE OF NORTH CAROLINA
DEPARTMENT OF TRANSPORTATION
RALEIGH
GENERAL DRAWING
FOR BRIDGE ON GEL I-85 BYPASS (-L-) OVER LEES CHAPEL ROAD (SR 2359)-Y1- BETWEEN SR 2526 (SUMMIT RD) AND SR 2303 (LAWNDALE DR)
(RL)

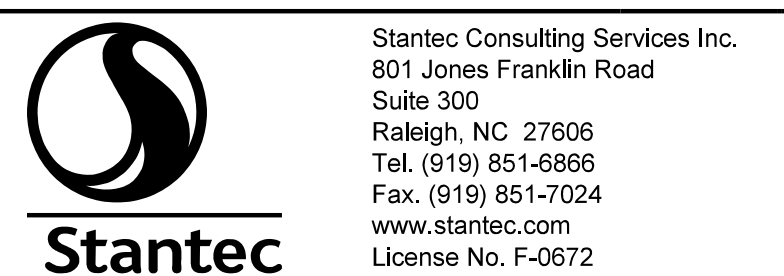


1/12/2018

DOCUMENT NOT CONSIDERED FINAL UNLESS ALL SIGNATURES COMPLETED

REVISIONS						SHEET NO.
NO.	BY:	DATE:	NO.	BY:	DATE:	S3-3
1			3			TOTAL SHEETS
2			4			29

STR. #3



Stantec Consulting Services Inc.
801 Jones Franklin Road
Suite 300
Raleigh, NC 27606
Tel. (919) 851-6866
Fax. (919) 851-7024
www.stantec.com
License No. F-0672

DRAWN BY : J. HAGENBUSH DATE : 12/09/16
CHECKED BY : N. D'AIUTO DATE : 01/03/17
DESIGN ENGINEER OF RECORD : T. R. DUDECK DATE : 01/12/18

U:\Structures\Drawings\Site \WBL\RL\U-2525C-SD.LC.dgn 1/9/2018 10:47:50AM jgelle