

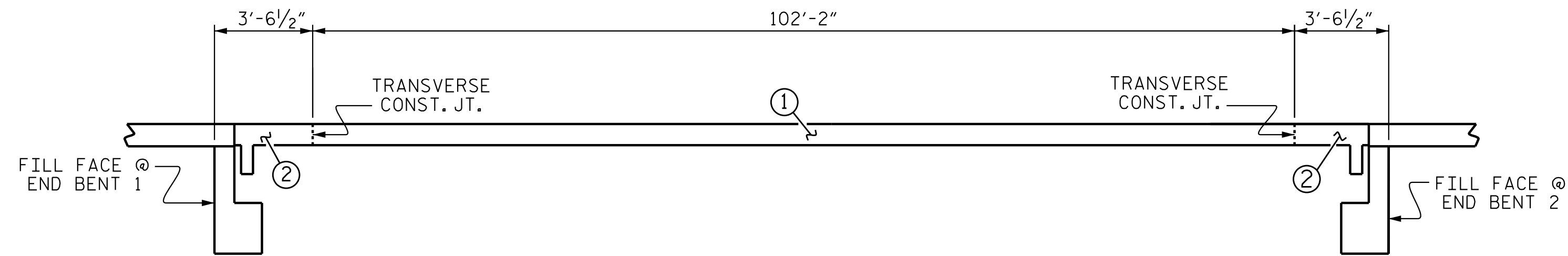
LAYOUT FOR COMPUTING AREA OF REINFORCED CONCRETE DECK SLAB (SQ. FT. 6,865)

BAR TYPE				BILL OF MATERIAL			
BAR	NO.	SIZE	TYPE	LENGTH	WEIGHT		
*A1	428	#5	STR	33'-2"	14806		
A2	428	#5	STR	33'-0"	14731		
*B1	172	#4	STR	28'-2"	3236		
B2	160	#5	STR	54'-6"	9095		
G1	4	#5	STR	33'-0"	137		
*J1	122	#4	4	1'-5"	116		
K1	8	#8	2	14'-1"	301		
K2	20	#8	3	21'-5"	1143		
S1	96	#5	1	6'-2"	618		
REINFORCING STEEL					LBS.	26,025	
* EPOXY COATED REINFORCING STEEL					LBS.	18,158	

GROOVING BRIDGE FLOORS	
APPROACH SLABS	2,762 SQ. FT.
BRIDGE DECK	6,136 SQ. FT.
TOTAL	8,898 SQ. FT.

SUPERSTRUCTURE BILL OF MATERIAL			
	CLASS AA CONCRETE	REINFORCING STEEL	EPOXY COATED REINFORCING STEEL
	(C.Y.)	(LBS.)	(LBS.)
POUR #1	210.1	26,025	18,158
POUR #2	20.7		
TOTAL **	230.8	26,025	18,158

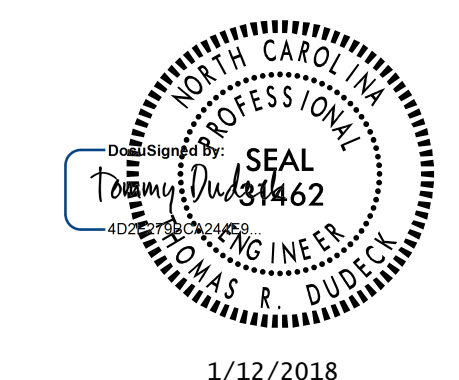
\*\* QUANTITIES FOR CONCRETE BARRIER RAIL ARE NOT INCLUDED



DECK POURING SEQUENCE  
 ← ⊕ = INDICATES THE NUMBER AND DIRECTION OF POUR.

SUPERSTRUCTURE REINFORCING STEEL LENGTHS ARE BASED ON THE FOLLOWING MINIMUM SPLICE LENGTHS					
BAR SIZE	SUPERSTRUCTURE EXCEPT APPROACH SLABS, PARAPET, AND BARRIER RAIL		APPROACH SLABS		PARAPET AND BARRIER RAIL
	EPOXY COATED	UNCOATED	EPOXY COATED	UNCOATED	
#4	2'-0"	1'-9"	2'-0"	1'-9"	2'-9"
#5	2'-6"	2'-2"	2'-6"	2'-2"	3'-5"
#6	3'-0"	2'-7"	3'-10"	2'-7"	4'-4"
#7	5'-3"	3'-6"			
#8	6'-10"	4'-7"			

PROJECT NO. U-2525C  
 GUILFORD COUNTY  
 STATION: 329+95.42 -L-

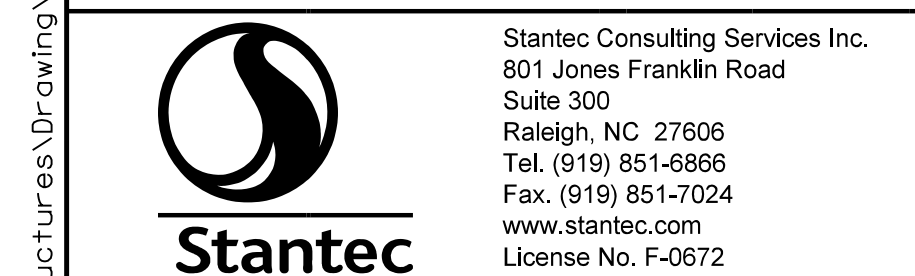


STATE OF NORTH CAROLINA  
 DEPARTMENT OF TRANSPORTATION  
 RALEIGH  
 SUPERSTRUCTURE  
 BILL OF MATERIAL  
 (LL)

REVISIONS						SHEET NO.
NO.	BY:	DATE:	NO.	BY:	DATE:	S2-20
1			3			TOTAL SHEETS 29
2			4			

DOCUMENT NOT CONSIDERED FINAL UNLESS ALL SIGNATURES COMPLETED

STR. #2



DRAWN BY: N.D'AIUTO DATE: 10/07/16  
 CHECKED BY: M. B. ISENHOUR DATE: 01/09/17  
 DESIGN ENGINEER OF RECORD: T. R. DUDECK DATE: 01/12/18

U:\Structures\Drawings\Site 4\EBLL\LU-2525C-SD.BOM.dgn 1/9/2018 10:45:05 AM jasper