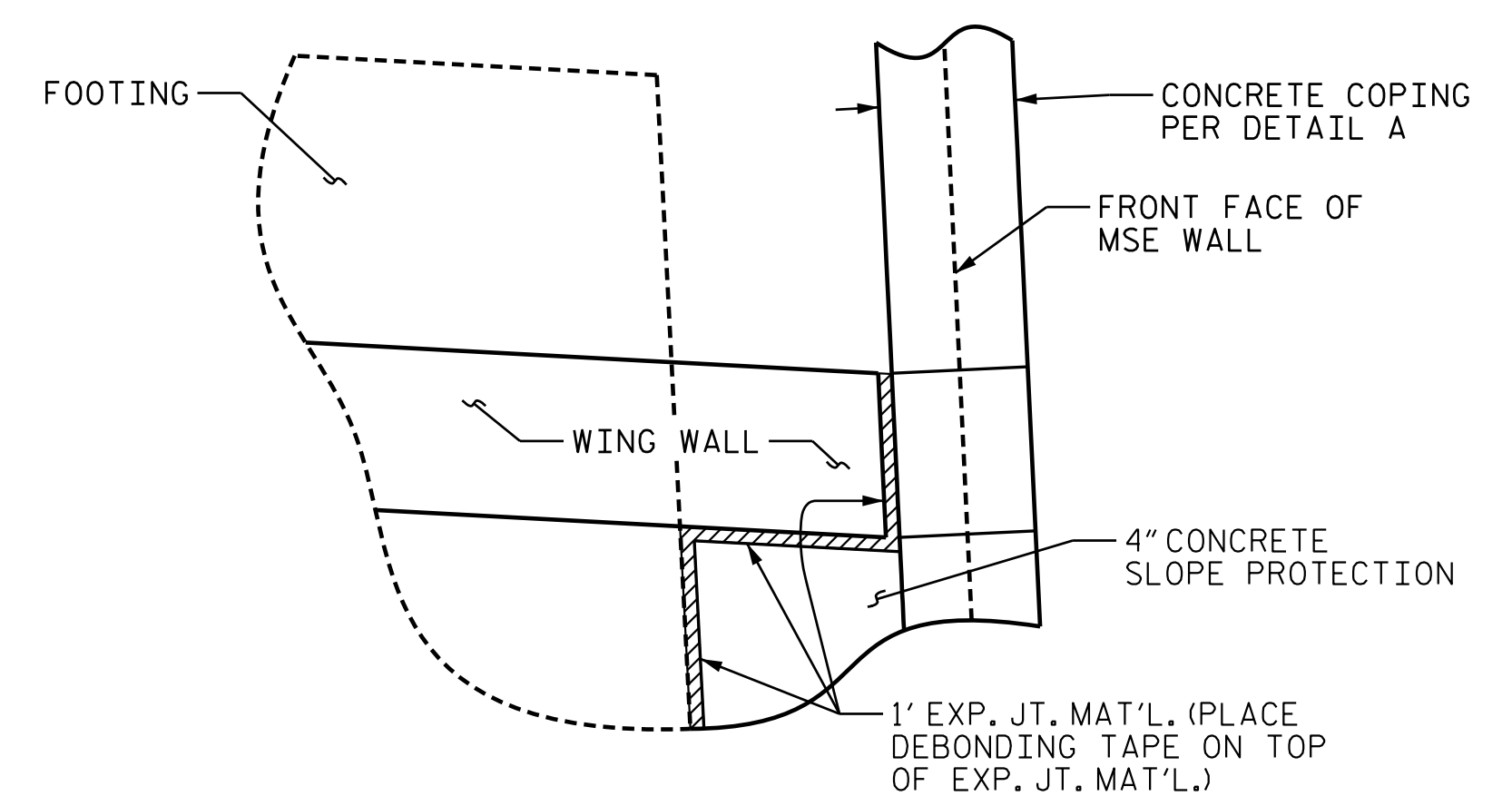
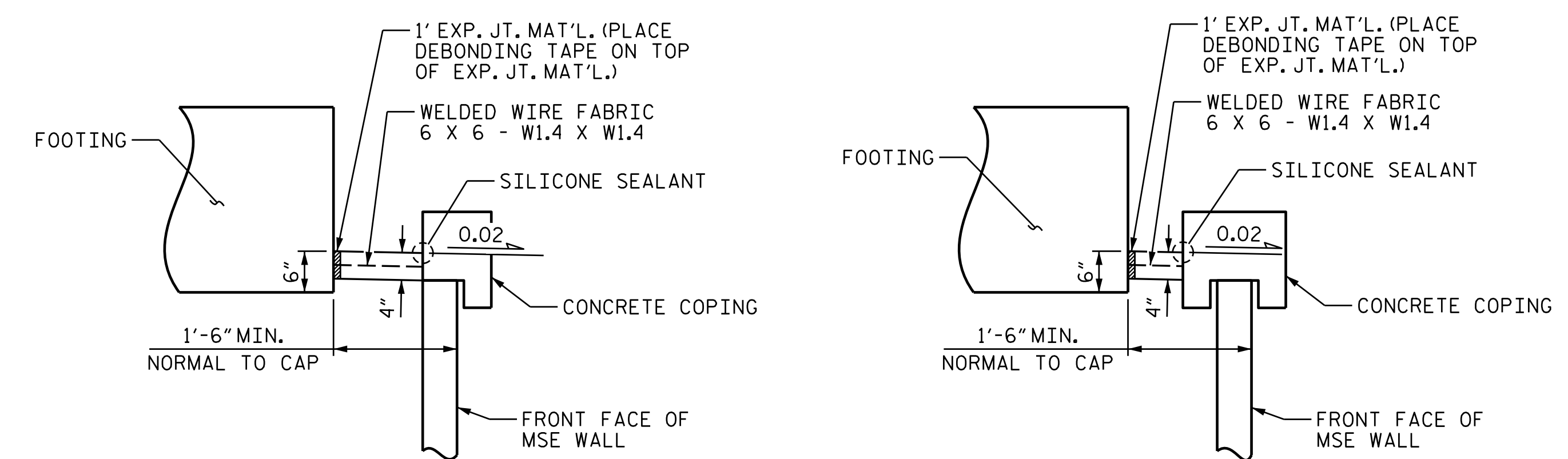


PLAN

ELEVATIONS SHOWN ARE AT TOP OF SLOPE PROTECTION AT FACE OF FOOTING



DETAIL C



DETAIL A

DETAIL B

COPING DETAILS

THE CONTRACTOR HAS THE OPTION OF USING COPING IN DETAILS A OR B. SEE MSE ABUTMENT WALLS TYPICAL SECTION FOR SPREAD FOOTING

NOTES:

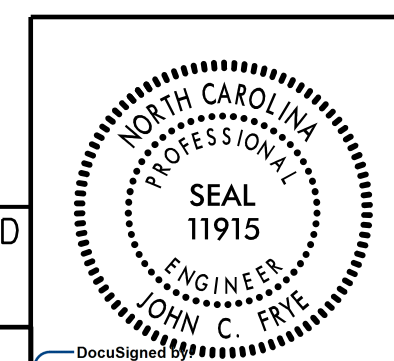
SLOPE PROTECTION SHALL CONSIST OF 4" POURED-IN-PLACE CONCRETE PAVING AS SHOWN IN THE DETAILS ON THIS SHEET. CONCRETE SHALL BE CLASS "B". THE CONCRETE SURFACE SHALL BE FLOATED WITH A WOODEN FLOAT AND FINISHED. WELDED WIRE FABRIC REINFORCING SHALL BE 6 X 6 - W1.4 X W1.4. THE COST OF THE WELDED WIRE FABRIC SHALL BE INCLUDED IN THE CONTRACT UNIT PRICE BID PER SQUARE YARD FOR SLOPE PROTECTION.

THE SLOPE PROTECTION IS DETAILED TO FIT WITH THE MSE WALL COPING DETAIL A. IF MSE WALL COPING DETAIL B IS USED, SLOPE PROTECTION SHALL BE ADJUSTED TO FIT. COORDINATE WITH THE MSE WALL FABRICATOR FOR ACTUAL WALL THICKNESS AND COPING TO BE USED. ADJUST SLOPE PROTECTION QUANTITIES AS NECESSARY TO FIT COPING USED.

BRIDGE @ 17+37.28 -Y16-	4 INCH SLOPE PROTECTION	WELDED WIRE FABRIC
	SQUARE YARDS	APPROX. L.F.
END BENT 1	7	56
END BENT 2	9	56

PROJECT NO. U-2525C
GUILFORD COUNTY
 STATION: 17+37.28 -Y16-

STATE OF NORTH CAROLINA
 DEPARTMENT OF TRANSPORTATION
 RALEIGH
CONCRETE SLOPE PROTECTION



DOCUMENT NOT CONSIDERED FINAL UNLESS ALL SIGNATURES COMPLETED

PLANS PREPARED BY:
M MOTT MACDONALD
 PO Box 700
 Fuquay-Varina, NC 27526
 (919) 552-2253
 www.mottmac.com
 LICENSE NO. F-0669

John C. Frye
 12/22/2017

REVISIONS						SHEET NO. S1-27
NO.	BY:	DATE:	NO.	BY:	DATE:	
1			3			TOTAL SHEETS 29
2			4			

12/21/2017 11:27:07 AM C:\Users\j16_Summit_Ave\Plans\U-2525C-SMU.SP-401240.dgn 333331.PN

DRAWN BY: J. T. WILLIAMS DATE: 10-2017
 CHECKED BY: J. E. MONDOLFI DATE: 10-2017
 DESIGN ENGINEER OF RECORD: J. E. MONDOLFI DATE: 11-2017