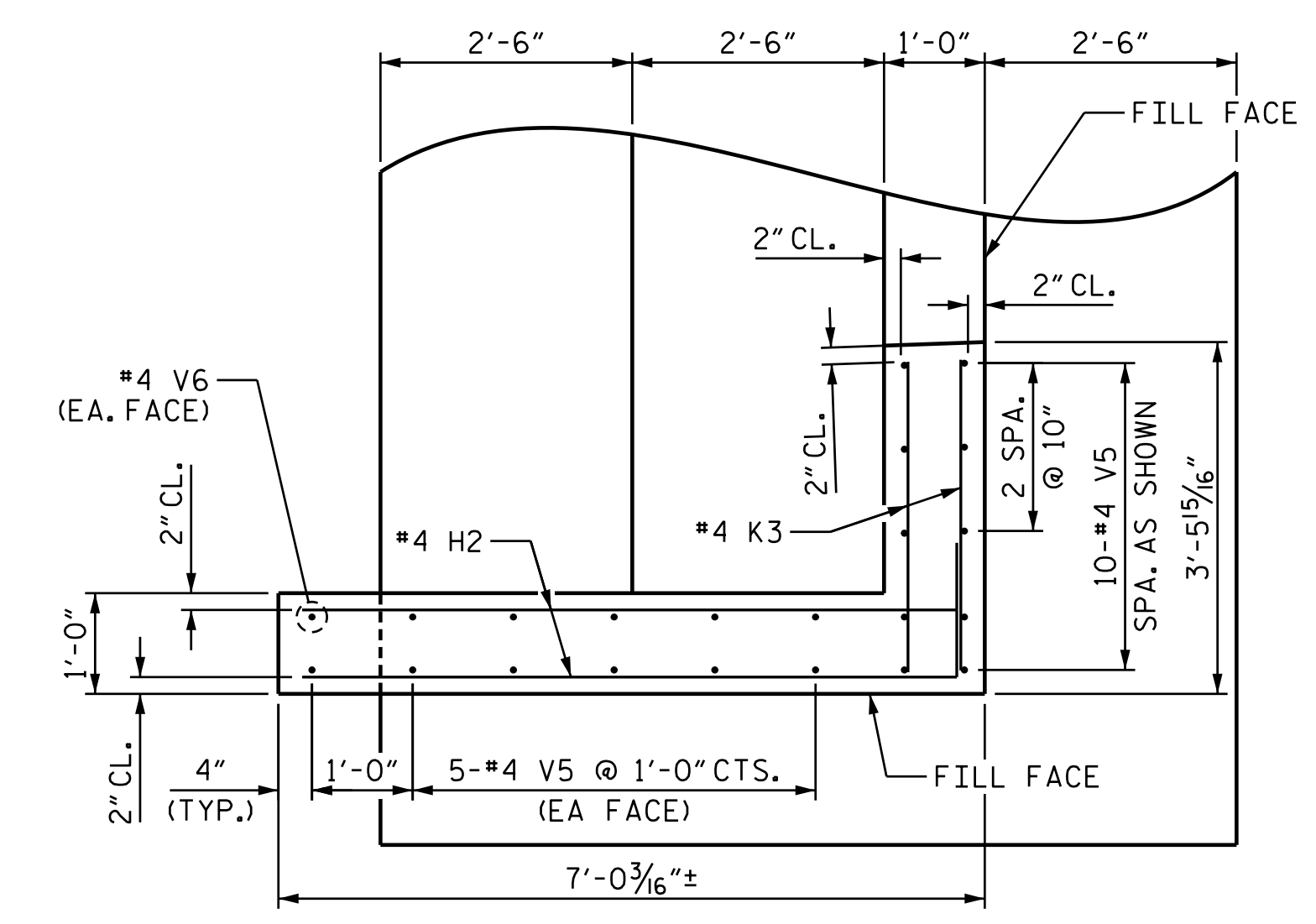
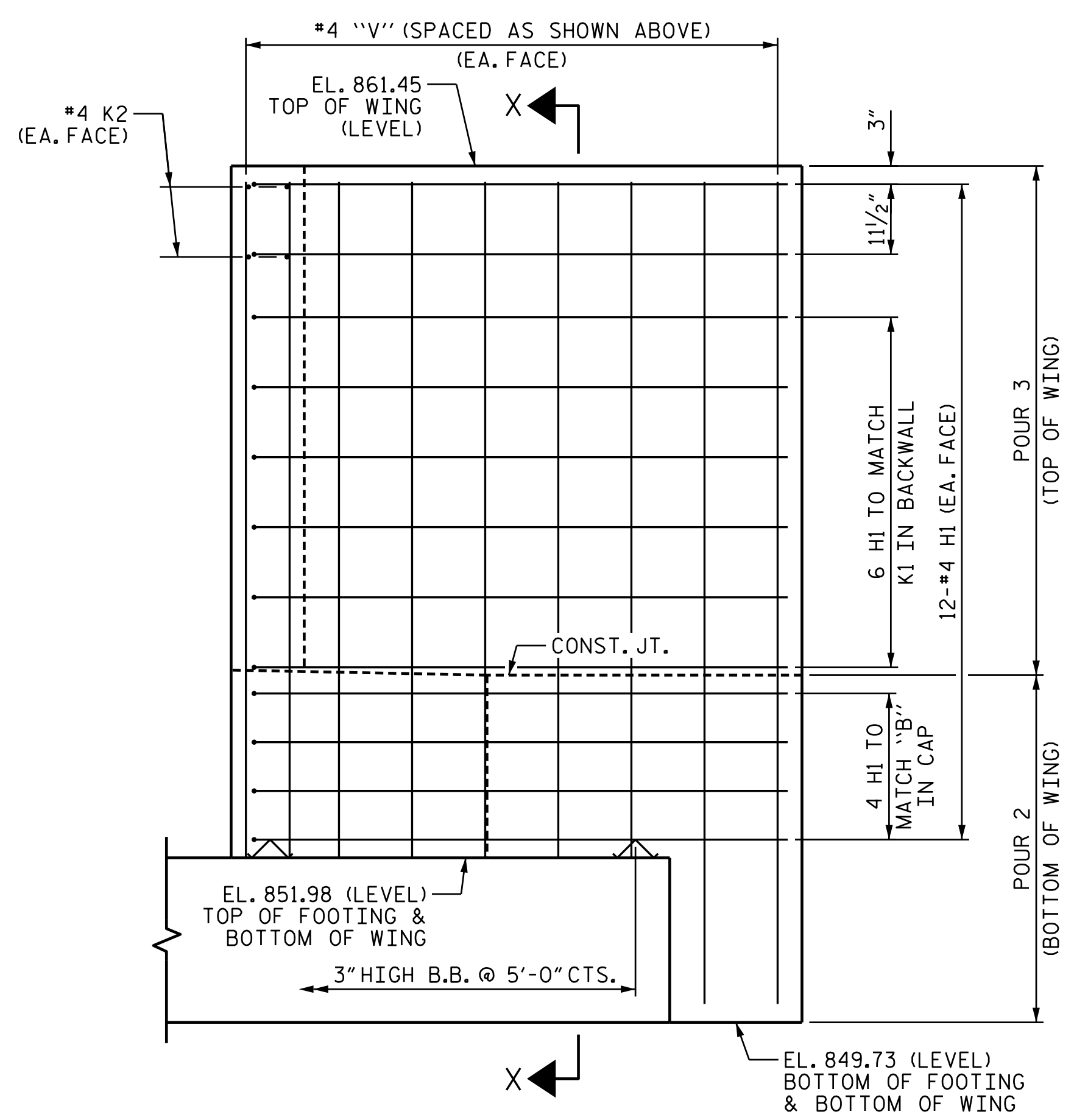


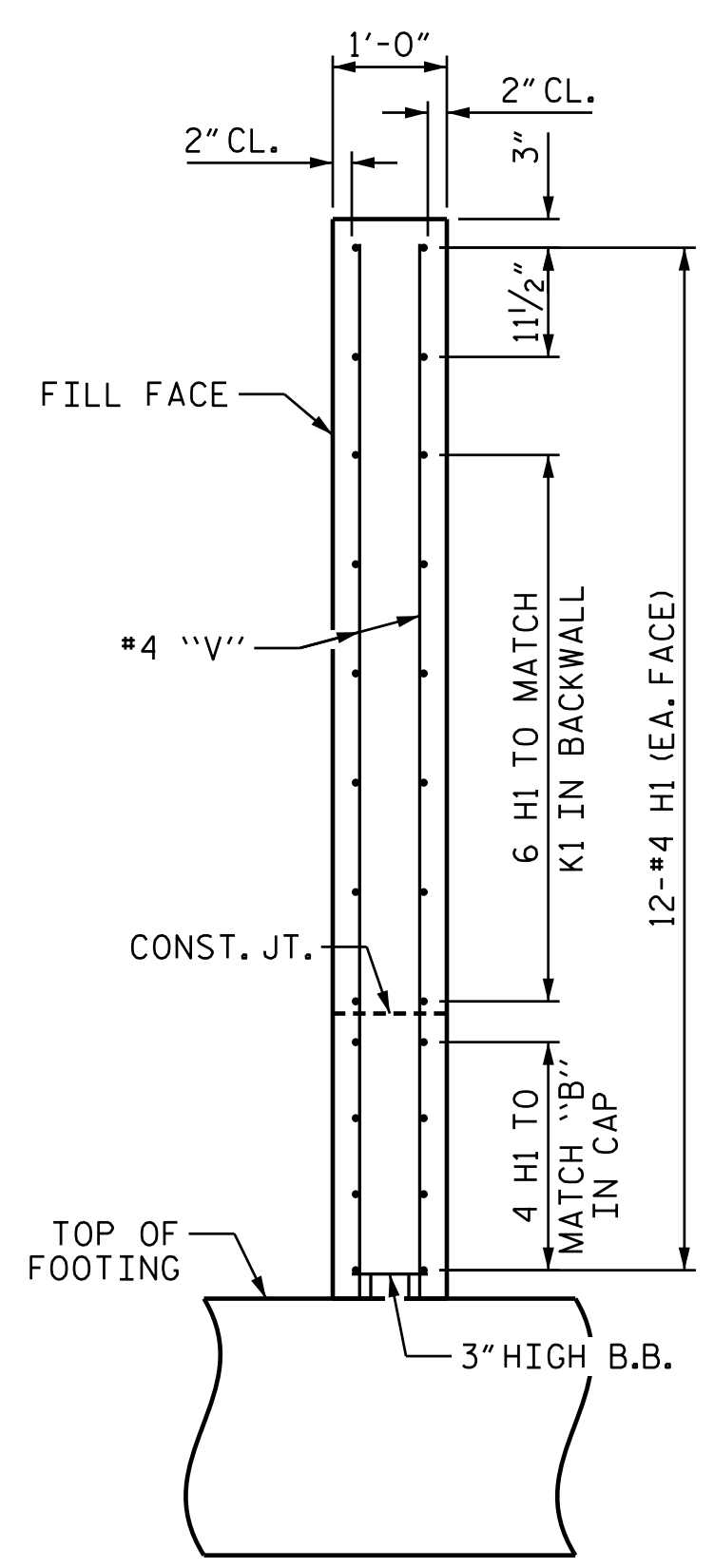
PLAN OF WING 3



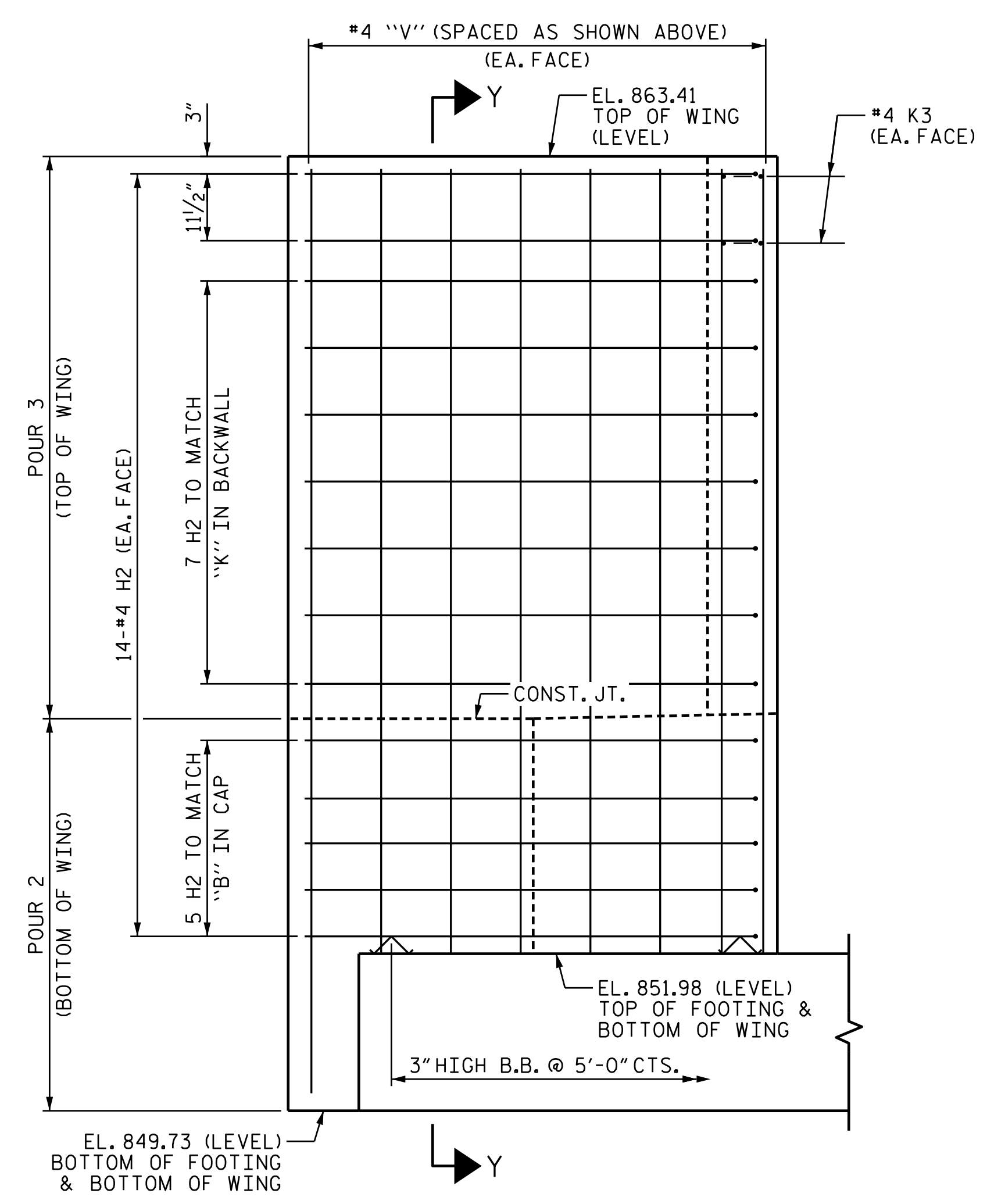
PLAN OF WING 4



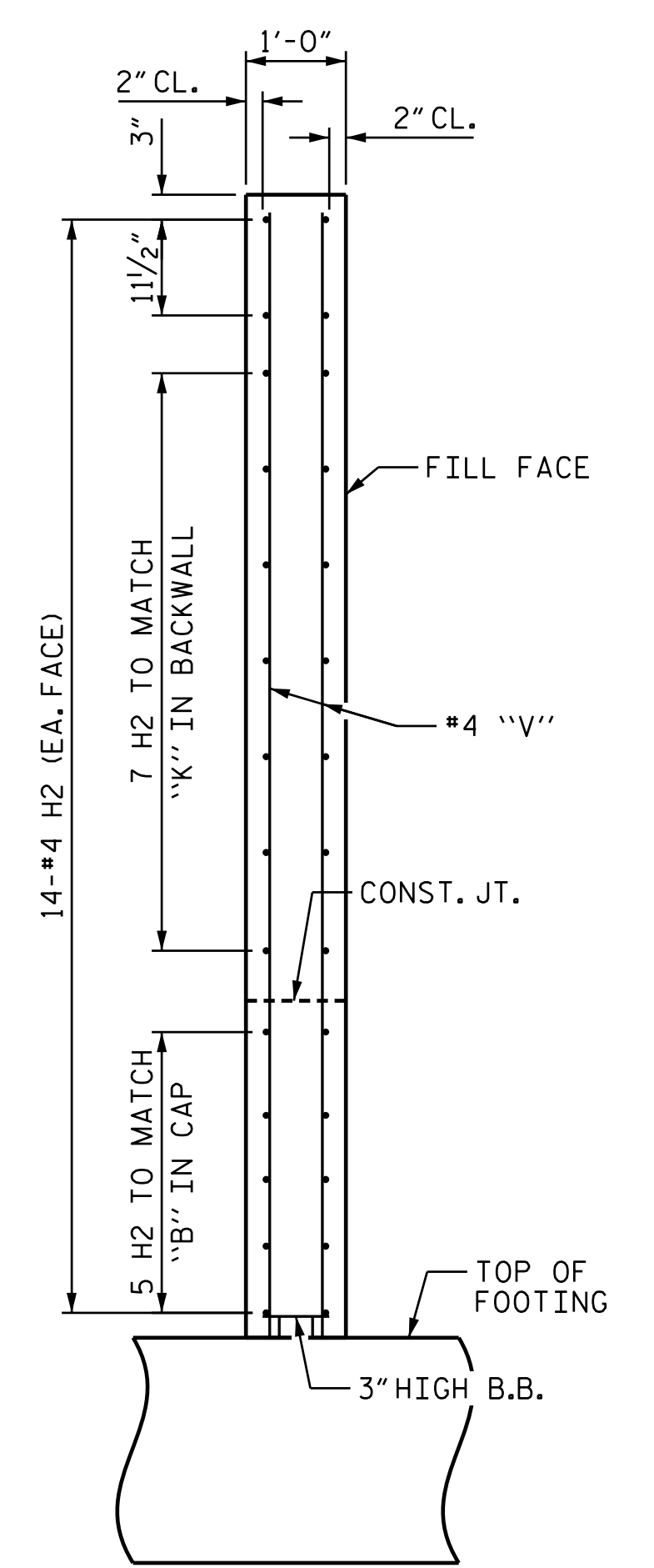
ELEVATION OF WING 3



SECTION X-X



ELEVATION OF WING 4



SECTION Y-Y

PROJECT NO. U-2525C
 GUILFORD COUNTY
 STATION: 17+37.28 -Y16-

SHEET 2 OF 3
 DEPARTMENT OF TRANSPORTATION
 RALEIGH
 SUBSTRUCTURE
 END BENT 2

| REVISIONS | | | | | | SHEET NO. |
|-----------|-----|-------|-----|-----|-------|--------------|
| NO. | BY: | DATE: | NO. | BY: | DATE: | S1-25 |
| 1 | | | 3 | | | TOTAL SHEETS |
| 2 | | | 4 | | | 29 |

11/27/2017 12:21:20 PM
 C:\Users\jwilliams\OneDrive\Projects\U-2525C-SMU.E2-401240.dgn
 333311.PN

DRAWN BY: J. T. WILLIAMS DATE: 9-2017
 CHECKED BY: J. E. MONDOLFI DATE: 10-2017
 DESIGN ENGINEER OF RECORD: J. E. MONDOLFI DATE: 11-2017

DOCUMENT NOT CONSIDERED
 FINAL UNLESS ALL
 SIGNATURES COMPLETED
 PLANS PREPARED BY:
 MOTT MACDONALD
 PO Box 700
 Fuquay-Varina, NC 27526
 (919) 552-2253
 www.mottmac.com
 LICENSE NO. F-0669

