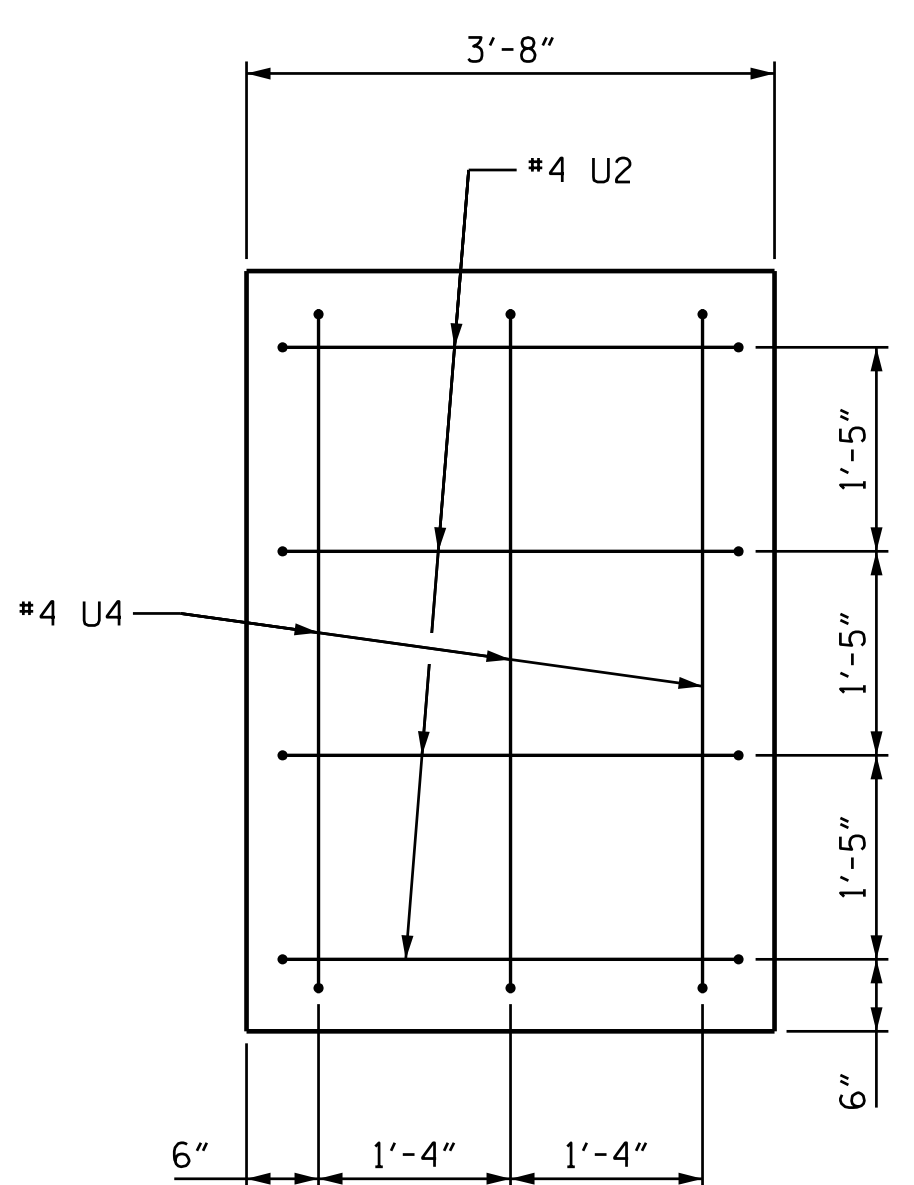
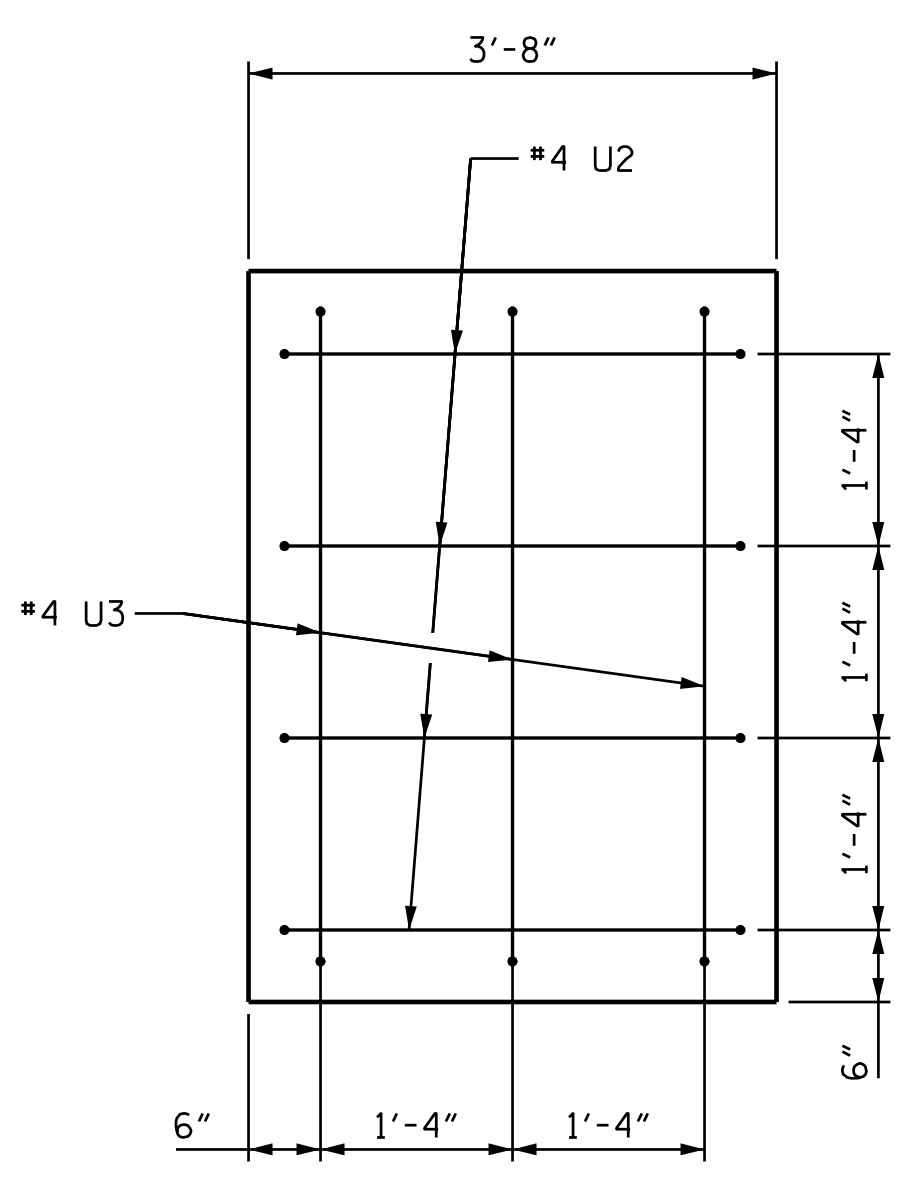


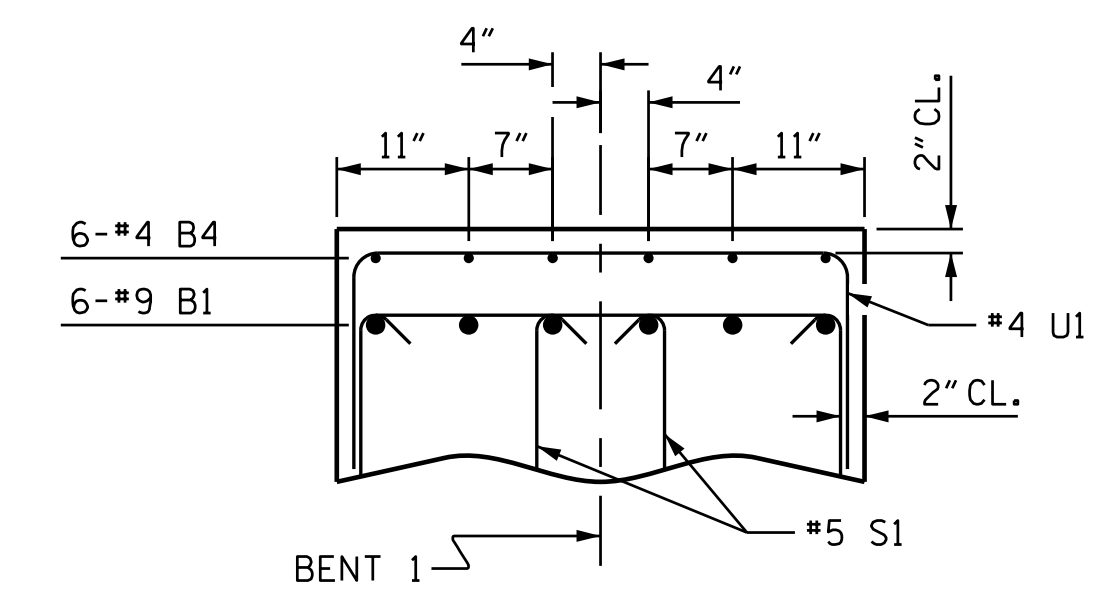
SECTION A-A



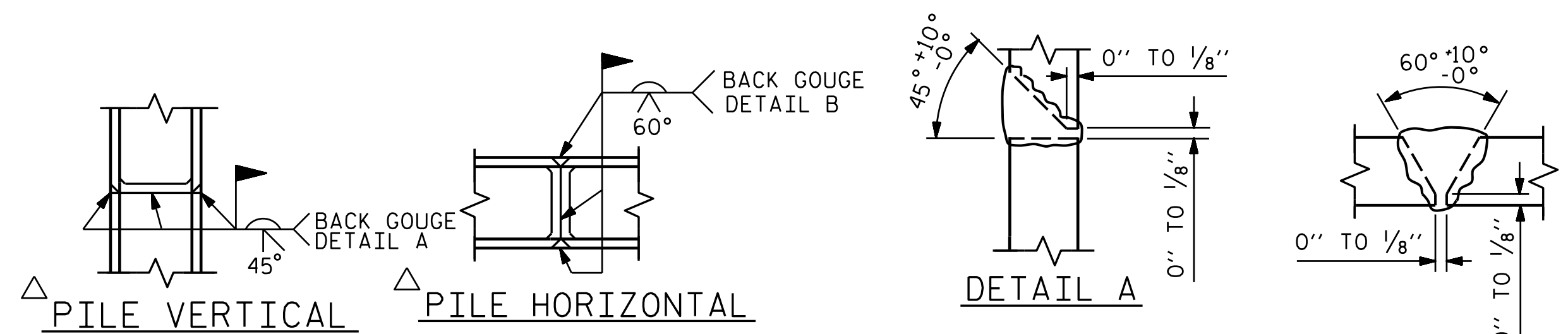
END OF CAP-VIEW X-X



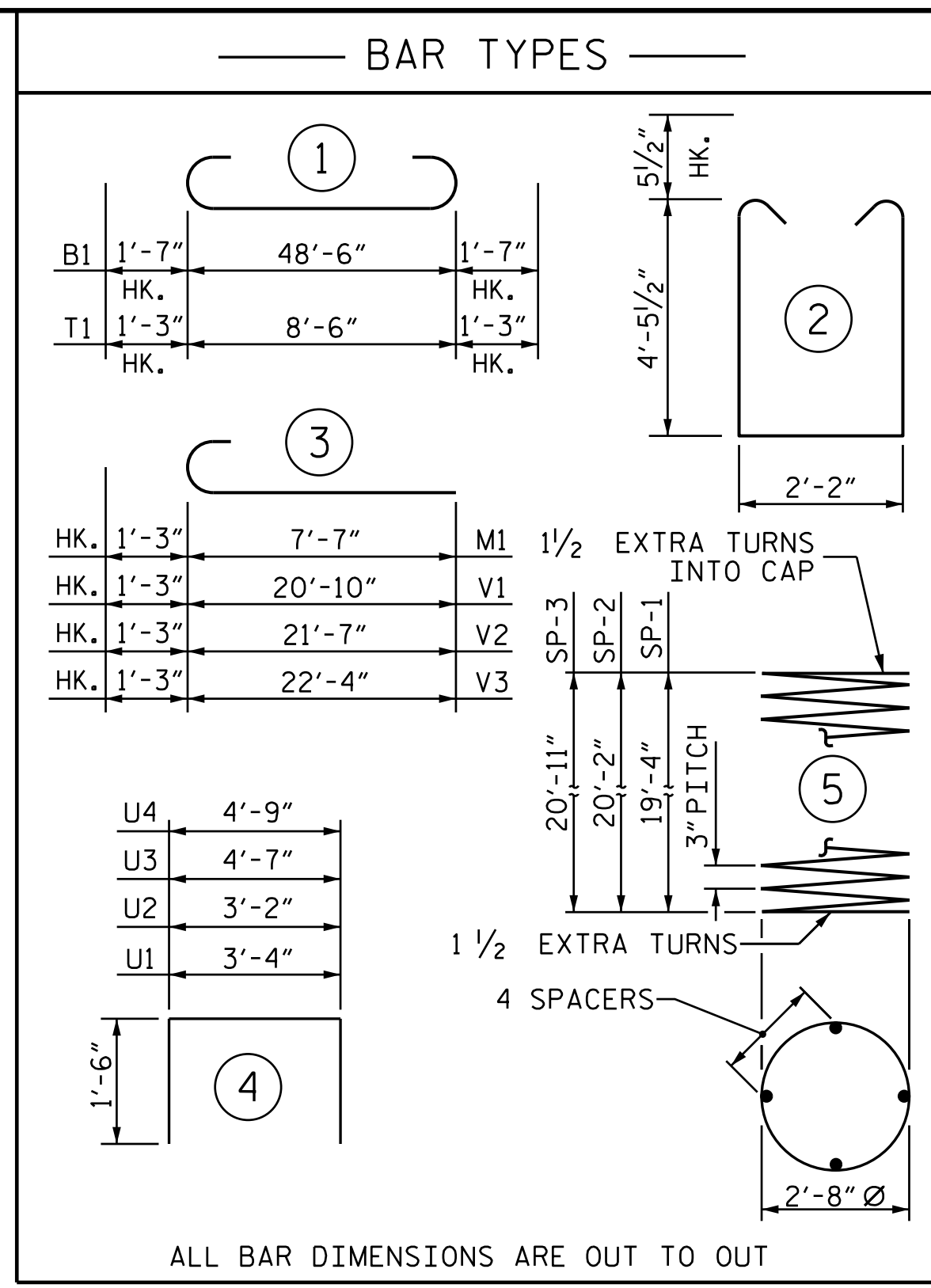
END OF CAP-VIEW Y-Y



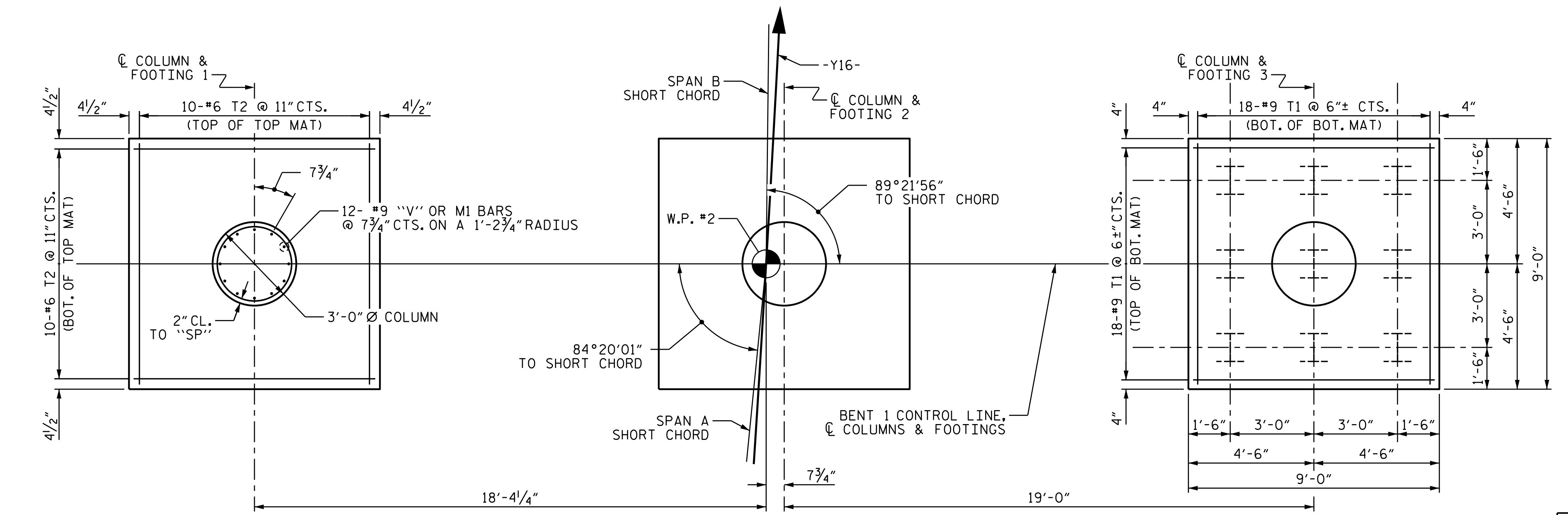
SECTION B-B



PILE SPLICE DETAILS



BILL OF MATERIAL					
BENT 1					
BAR	NO.	SIZE	TYPE	LENGTH	WEIGHT
B1	6	#11	1	51'-8"	1647
B2	6	#11	STR	48'-8"	1551
B3	6	#5	STR	48'-8"	305
B4	30	#4	STR	4'-3"	85
M1	36	#9	3	8'-10"	1081
S1	112	#5	2	12'-0"	1402
T1	108	#9	1	11'-0"	4039
T2	60	#6	STR	8'-6"	766
U1	40	#4	4	6'-4"	169
U2	8	#4	4	6'-2"	33
U3	3	#4	4	7'-7"	15
U4	3	#4	4	7'-9"	16
V1	12	#9	3	22'-1"	901
V2	12	#9	3	22'-10"	932
V3	12	#9	3	23'-7"	962
REINFORCING STEEL					= 13,904 LBS
SP-1	1	*	5	664'-2"	444
SP-2	1	*	5	691'-0"	462
SP-3	1	*	5	715'-9"	478
SPIRAL COLUMN REINFORCING STEEL					= 1,384 LBS
* THE SP-1 SPIRAL REINFORCING STEEL SHALL BE W20 OR D-20 COLD DRAWN WIRE OR #4 PLAIN OR DEFORMED BAR					
CLASS A CONCRETE:					
POUR #1: FOOTINGS					36.0 C.Y.
POUR #2: COLUMNS					15.6 C.Y.
POUR #3: CAP					33.7 C.Y.
TOTAL					85.3 C.Y.
HP 12 X 53 STEEL PILES:					
NO. = 27					LIN. FT. = 630
STEEL PILE POINTS					27 EA.
FOUNDATION EXCAVATION					LUMP SUM



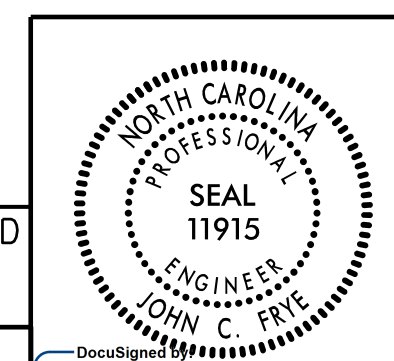
PLAN OF FOOTINGS & COLUMNS

PILES, DIMENSIONS AND REINFORCING STEEL ARE TYPICAL FOR EACH FOOTING

PROJECT NO. U-2525C
 GUILFORD COUNTY
 STATION: 17+37.28 -Y16-

SHEET 2 OF 2

STATE OF NORTH CAROLINA
 DEPARTMENT OF TRANSPORTATION
 RALEIGH
 SUBSTRUCTURE
 BENT 1



DOCUMENT NOT CONSIDERED FINAL UNLESS ALL SIGNATURES COMPLETED

PLANS PREPARED BY:
 MOTT MACDONALD
 PO Box 700
 Fuquay-Varina, NC 27526
 (919) 552-2253
 www.mottmac.com
 LICENSE NO. F-0669

REVISIONS					
NO.	BY:	DATE:	NO.	BY:	DATE:
1			3		
2			4		

SHEET NO. S1-23
 TOTAL SHEETS 29

11/27/2017 11:21:20 AM J:\167077\Drawings\16_Summit_Ave\Plans\U-2525C_SML.B1_401240.dgn
 12/21/2017 3:33:00 PM

DRAWN BY: J. T. WILLIAMS DATE: 6-2017
 CHECKED BY: J. E. MONDOLFI DATE: 9-2017
 DESIGN ENGINEER OF RECORD: J. E. MONDOLFI DATE: 11-2017