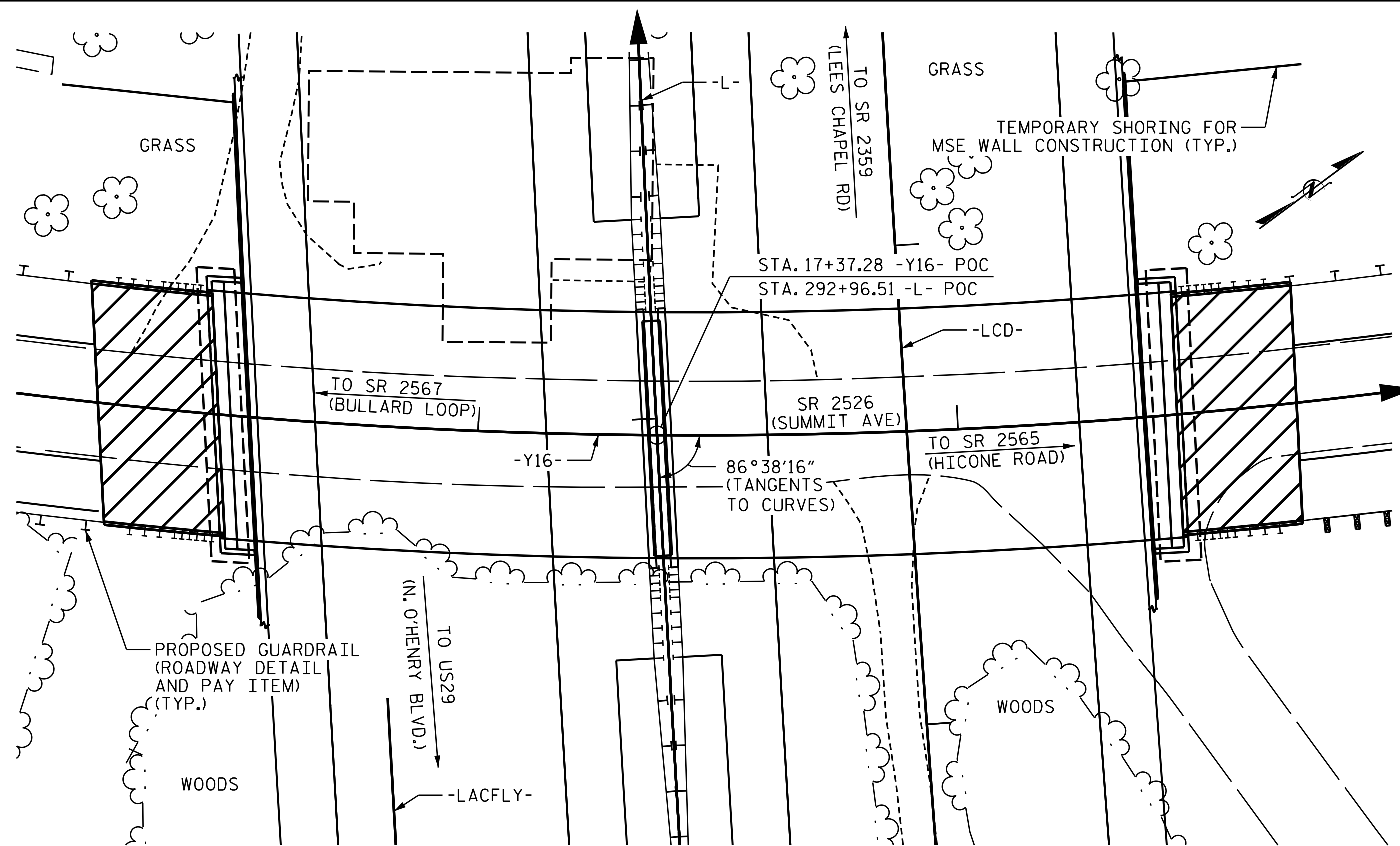


BM #1: RR SPIKE SET IN 14" SWEET GUM, -L- STA 297+96.00, 240' LT., ELEV.= 855.74'



NOTES:

- ASSUMED LIVE LOAD = HL-93 OR ALTERNATE LOADING.
- THIS BRIDGE HAS BEEN DESIGNED IN ACCORDANCE WITH THE AASHTO LRFD BRIDGE DESIGN SPECIFICATIONS.
- THIS BRIDGE IS LOCATED IN SEISMIC ZONE 1.
- FOR OTHER DESIGN DATA AND GENERAL NOTES, SEE SHEET SN.
- FOR SUBMITTAL OF WORKING DRAWINGS, SEE SPECIAL PROVISIONS.
- FOR FALSEWORK AND FORMWORK, SEE SPECIAL PROVISIONS.
- FOR CRANE SAFETY, SEE SPECIAL PROVISIONS.
- FOR GROUT FOR STRUCTURES, SEE SPECIAL PROVISIONS.
- REMOVABLE FORMS MAY BE USED IN LIEU OF METAL STAY-IN-PLACE FORMS IN ACCORDANCE WITH ARTICLE 420-3 OF THE STANDARD SPECIFICATIONS.
- NEEDLE BEAMS WILL NOT BE ALLOWED UNLESS OTHERWISE CALLED FOR ON THE PLANS OR APPROVED BY THE ENGINEER.
- THE CLASS AA CONCRETE IN THE BRIDGE DECK SHALL CONTAIN FLY ASH OR GROUND GRANULATED BLAST FURNACE SLAG AT THE SUBSTITUTION RATE SPECIFIED IN ARTICLE 1024-1 AND IN ACCORDANCE WITH ARTICLES 1024-5 AND 1024-6 OF THE STANDARD SPECIFICATIONS. NO PAYMENT WILL BE MADE FOR THIS SUBSTITUTION AS IT IS CONSIDERED INCIDENTAL TO THE COST OF THE REINFORCED CONCRETE DECK SLAB.
- WORK SHALL NOT BE STARTED ON THIS BRIDGE UNTIL ROADWAY SECTION HAS BEEN EXCAVATED.
- FOR TEMPORARY SHORING FOR MSE WALL CONSTRUCTION, SEE SPECIAL PROVISIONS.
- FOR EROSION CONTROL MEASURES, SEE EROSION CONTROL PLANS.

FOR UTILITY INFORMATION, SEE UTILITY PLANS AND SPECIAL PROVISIONS.

LOCATION SKETCH

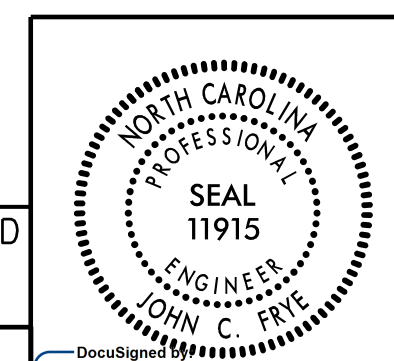
TOTAL BILL OF MATERIAL

	FOUNDATION EXCAVATION FOR BENT 1	REINFORCED CONCRETE DECK SLAB	GROOVING BRIDGE FLOORS	CLASS A CONCRETE	BRIDGE APPROACH SLABS	REINFORCING STEEL	SPIRAL COLUMN REINFORCING STEEL	MODIFIED 63" PRESTRESSED CONCRETE GIRDERS	PILE DRIVING EQUIPMENT SETUP FOR HP 12 X 53 STEEL PILES	HP 12 X 53 STEEL PILES	STEEL PILE POINTS	VERTICAL CONCRETE BARRIER RAIL	4" SLOPE PROTECTION	ELASTOMERIC BEARINGS	FOAM JOINT SEALS	TEMPORARY SHORING FOR MSE WALL CONSTRUCTION	
	LUMP SUM	SO. FT.	SO. FT.	CU. YDS.	LUMP SUM	LBS.	LBS.	NO. LIN. FT.	EA.	NO.	LIN. FT.	NO.	LIN. FT.	SO. YDS.	LUMP SUM	LUMP SUM	SO. FT.
SUPERSTRUCTURE		10,245	11,391					10 991.67				399.8					
END BENT 1				80.2		6,752							7				
BENT 1	LUMP SUM			85.3		13,904	1,384		27	27	630	27					
END BENT 2				82.9		6,977							9				
TOTAL	LUMP SUM	10,245	11,391	248.4	LUMP SUM	27,633	1,384	10 991.67	27	27	630	27	399.8	16	LUMP SUM	LUMP SUM	639

PROJECT NO. U-2525C
GUILFORD COUNTY
 STATION: 17+37.28 -Y16-

SHEET 4 OF 4

STATE OF NORTH CAROLINA
 DEPARTMENT OF TRANSPORTATION
 RALEIGH
GENERAL DRAWING
 BRIDGE ON SR 2526
 (SUMMIT AVE.) OVER
 GEL I-85 BYPASS BETWEEN
 SR 2567 AND SR 2565



DOCUMENT NOT CONSIDERED FINAL UNLESS ALL SIGNATURES COMPLETED

PLANS PREPARED BY:
M MOTT MACDONALD
 PO Box 700
 Fuquay-Varina, NC 27526
 (919) 552-2253
 www.mottmac.com
 LICENSE NO. F-0669

REVISIONS						SHEET NO.
NO.	BY:	DATE:	NO.	BY:	DATE:	S1-4
1			3			TOTAL SHEETS
2			4			29

#157077
 C:\Users\jwilliams\OneDrive\Documents\U-2525C-SML.GD4_401240.dgn
 12/21/2017 3:31:59 PM

DRAWN BY: J. T. WILLIAMS DATE: 4-2017
 CHECKED BY: J. E. MONDOLFI DATE: 8-2017
 DESIGN ENGINEER OF RECORD: J. C. FRYE DATE: 11-2017